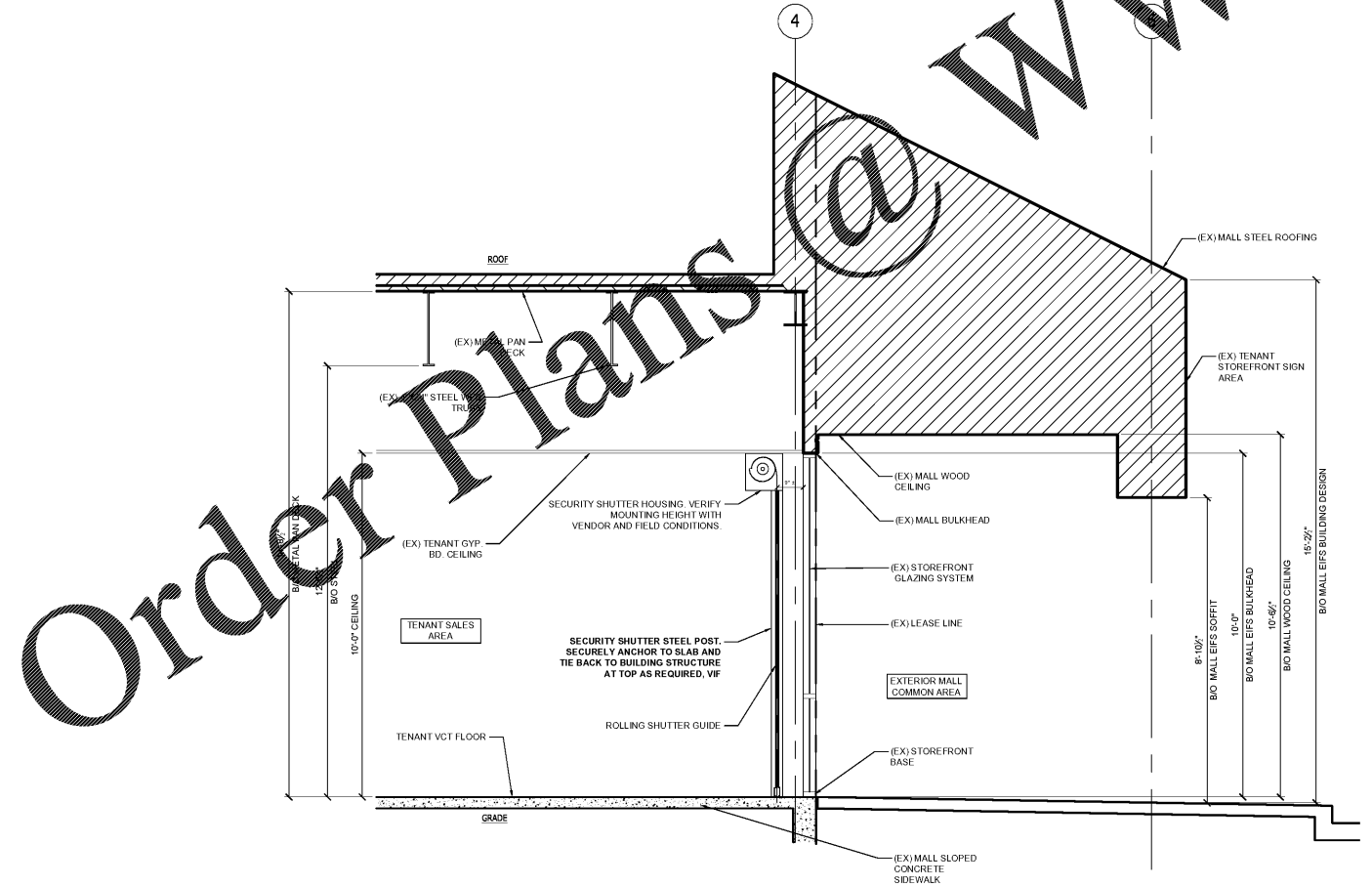


**1 EXTERIOR STOREFRONT ELEVATION**  
 SCALE: 1/4" = 1'-0"

- STOREFRONT GENERAL NOTES:**
- A. EXISTING STOREFRONT TO REMAIN. ENSURE EXISTING SEALS AND/OR CAULKING IS IN LIKE NEW CONDITION. REFURBISH / REPLACE TO LIKE NEW CONDITION.
  - B. WHERE EXISTING GLAZING TO REMAIN, GC TO REMOVE ALL EXISTING GRAPHICS, STICKERS, GLUES, ETC AS REQUIRED FOR LIKE NEW CONDITION.
  - C. NEW STOREFRONT SYSTEM TO MATCH EXISTING. VERIFY GLASS REQUIREMENTS WITH MANUFACTURER AS REQUIRED TO MATCH EXISTING AND MEET ALL APPLICABLE CODES.
  - D. GC TO REPAIR ANY DAMAGES TO THE LANDLORD'S EXISTING FINISHES. DAMAGE CAUSED BY THE GC IS TO BE REPAIRED AT THE GC'S EXPENSE.
  - E. GC TO COORDINATE INSTALLATION OF SECURITY SYSTEM, ROLLING SECURITY SHUTTER AND SIGNAGE WITH VENDOR(S). SEE CONTACTS ON SHEET IS1.
  - F. IMMEDIATELY AFTER DEMOLITION, THE GC MUST COORDINATE WITH THE SIGN VENDOR FOR ANY SIGN INSTALLATION REQUIREMENTS BUT NOT LIMITED TO: PRE-WIRING AND ELECTRICAL REQUIREMENTS, ACCESS PANELS, SIGN SUPPORT AND/OR BLOCKING REQUIREMENTS, CAT-WALKS, ETC.
  - G. REFER TO SIGN SHOP DRAWINGS FOR SIGN DETAILS. PRE-FABRICATED SIGN ASSEMBLY FURNISHED & INSTALLED BY SIGN CONTRACTOR UNDER A SEPARATE PERMIT.
  - H. SIGN VENDOR SHALL OBTAIN LANDLORD APPROVAL AND AGENCY / PERMIT APPROVALS VIA SEPARATE SUBMITTAL.
  - I. GC TO REPAIR OR REPLACE ANY BROKEN GLAZING TO MATCH EXISTING.
  - J. SUPPORT NEW COILING SHUTTER SEPARATELY FROM BUILDING STRUCTURE.
  - K. ALL NEW ENVELOPE STOREFRONT GLAZING IS TO ADHERE TO THE FOLLOWING MAXIMUM REQUIREMENTS:
 

U-FACTOR (FIXED FENESTRATION):	0.70
U-FACTOR (ENTRY DOORS):	1.10
U-FACTOR (ALL OTHERS):	0.75
SHGC:	0.40



**2 STOREFRONT SECTION**  
 SCALE: 1/2" = 1'-0"

These drawings are instruments of the Architect's service and are the property of LGA Partners, LP. They shall not be reproduced or used in any way, whatsoever, without the written permission of LGA Partners, LP. © 2019



NO.	DATE	DESCRIPTION

DATE: 12/20/19  
 DRAWN BY: DAH  
 PROJECT NO: 19046