

GENERAL NOTES:

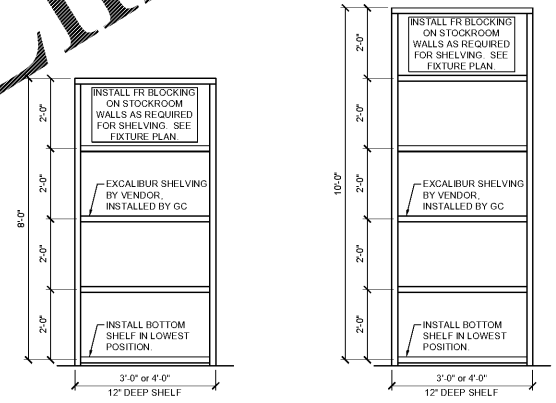
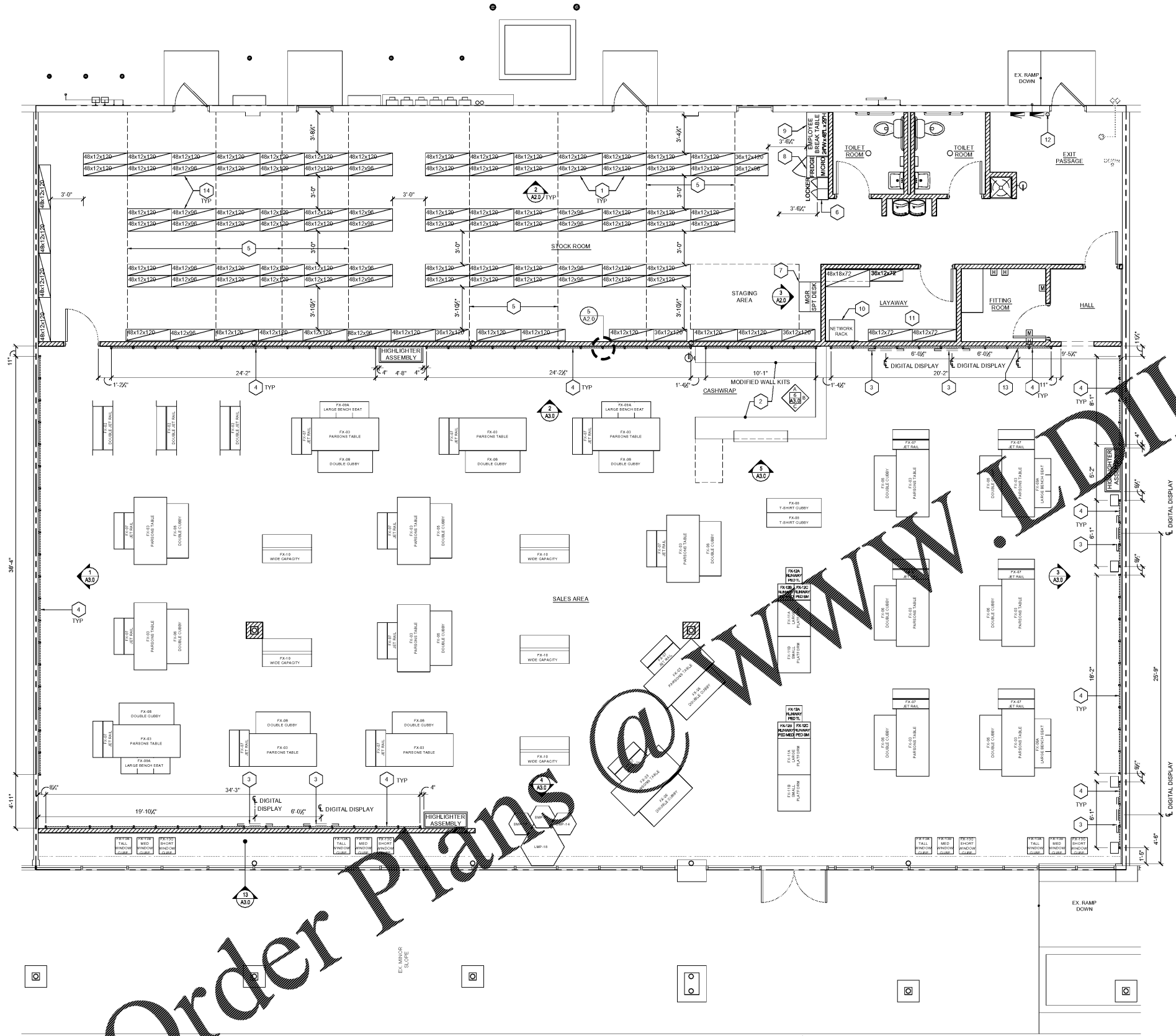
- A. PRIOR TO FIXTURE INSTALLATION, REFER TO THE FIXTURE HANDBOOK FOR INFORMATION ON ASSEMBLY OF THE FIXTURES. IF THE HANDBOOK IS NOT AVAILABLE, CALL THE TENANT'S CONSTRUCTION PROJECT MANAGER (SEE COVER SHEET) FOR A REFERENCE.
- B. INSTALL THE PERIMETER WALL UNITS BY FIRST TAKING THE HIGH POINT OF THE FLOOR AND SETTING THE CONTROL LINE.
- C. GC SHALL PLACE ALL FLOOR FIXTURES IN ACCORDANCE WITH PLAN TO ENSURE ACCESSIBILITY AND CLEAR EGRESS ROUTES. LEVEL IN PLACE, AND ALL DAMAGED / MISSING LEVELERS TO BE REPLACED.
- D. FREE STANDING FLOOR FIXTURES SHALL BE PLACED TO ALLOW A 4" SPACING (3" MIN).
- E. FIXTURE PLAN IS PRELIMINARY. CONTACT OWNER FOR FINAL FIXTURE COUNTS AND LOCATIONS. FINAL FIXTURE PLAN SHALL CONFORM TO REQUIREMENTS LISTED ABOVE.

KEY NOTES:

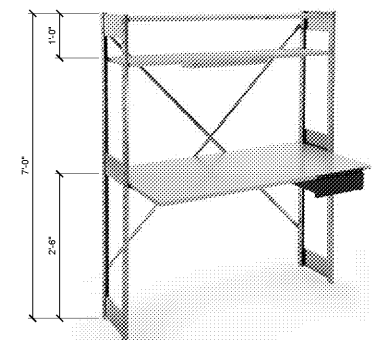
1. EXCALIBUR SHELVING SYSTEM - GC SHALL SECURE TO ADJACENT WALL AND / OR PROVIDE BRACING AS REQ'D. SEE 2A2.0.
2. CASHWRAP & BACKWRAP - SEE INTERIOR ELEVATIONS.
3. DIGITAL DISPLAY SCREEN.
4. PERIMETER WALL UNITS - SEE 7/A3.0 FOR WALL STRAPPING DETAIL.
5. 2X WOOD BRACING CONTINUOUS ALONG TOP OF SHELVING.
6. EMPLOYEE LOCKERS.
7. MANAGER SUPPORT DESK (EXCALIBUR); DRYWALL EXPANSION ATTACH TO WALL, SAME AS WALL STANDARDS. SEE 3A2.0.
8. EMPLOYEE REFRIGERATOR AND MICROWAVE.
9. EMPLOYEE BREAK TABLE.
10. NETWORK EQUIPMENT RACK - SEE A7.0.
11. SEE LAYAWAY SHELVING DETAILS FOR LIGHT FORMATION.
12. GC TO PROVIDE AND INSTALL A FIXTURE BY ELECTRICAL PANEL FOR A CLEAN SET OF CITY APPROVED ELECTRICAL PANELS. SEE DETAIL 4A2.0.
13. POWER & DATA FOR FUTURE USE.
14. EXCALIBUR SHELVING SYSTEM SHORTER UNITS UNDER AHJ'S. GC SHALL SECURE TO WALL AND PROVIDE BRACING AS REQ'D. SEE 2A2.0. COORDINATE WITH MECHANICAL PLANS.

MBOL LEGEND:
 SEE FITTING ROOM DETAILS FOR SPECIFICS

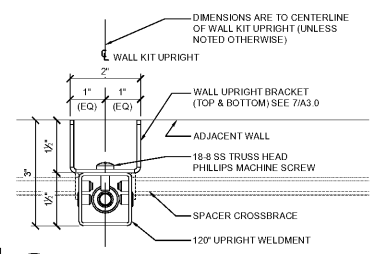
- (M) MIRROR



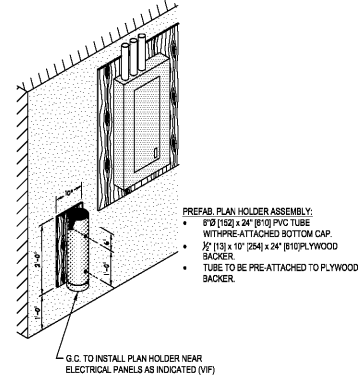
2 TYP SHELVING ELEVATION
 SCALE: 1/2" = 1'-0"



3 MANAGERS SUPPORT DESK
 SCALE: N.T.S.



5 STANDARD INSTALL
 SCALE: 6" = 1'-0"



4 PLAN HOLDER
 SCALE: N.T.S.

1 FIXTURE PLAN
 SCALE: 1/4" = 1'-0"

NOTE: FIXTURE PLAN IS FOR REFERENCE ONLY. COORDINATE FINAL QUANTITIES AND FIXTURE PLACEMENT WITH OWNER.
 NOTE: DIMENSIONS ARE TO CENTERLINE OF FIXTURES, UNLESS NOTED OTHERWISE.

SQUARE FOOTAGES:

SALES	4,918 SQ FT	70%
BACK OF HOUSE	2,072 SQ FT	30%
TOTAL	6,990 SQ FT	100%

STOCK SHELVING:

(106) 48"x12" STOCK SHELVES	
(65) 36"x12" STOCK SHELVES	
TOTAL - 69 LINEAR FOOT	
TOTAL - 4,256 CUBIC CAPACITY	

NO.	DATE	DESCRIPTION

Order Plans @ WWW.IDDLine.com