

NOTE: GC TO FIELD VERIFY LEASE LINE DIMENSIONS AFTER DEMOLITION & PRIOR TO FRAMING. IF ANY DISCREPANCIES, GC TO NOTIFY PROJECT MANAGER IMMEDIATELY.

SALES AREA SQUARE FOOTAGE 4,918 SF  
 NON SALES AREA SQUARE FOOTAGE 2,072 SF  
 TOTAL SQUARE FOOTAGE 6,990 SF

**GENERAL NOTES:**

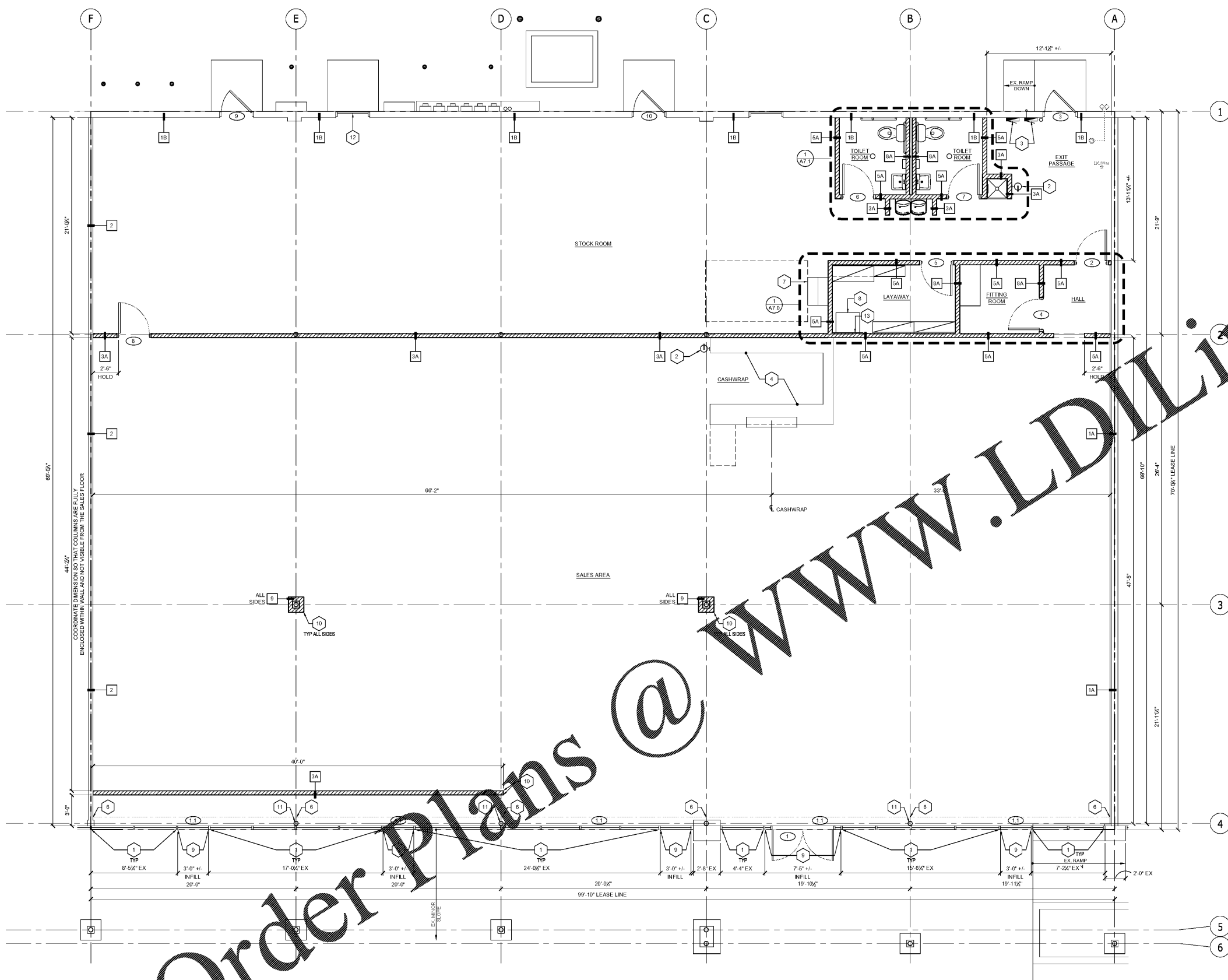
- A. THE GC SHALL FIELD VERIFY ALL DIMENSIONS AND CONDITIONS AND SHALL REPORT TO THE OWNER ANY DISCREPANCIES AND/OR OMISSIONS WHICH SHOULD BE RECORDED IN THE SATISFACTORY COMPLETION REPORT.
- B. ALL WOOD FLOOR BLOCKING, OTHER THAN FINISHED WOOD TRIM SHALL BE FIRE TREATED.
- C. ALL METAL PARTITIONS SHALL BE INSTALLED IN ACCORDANCE WITH THE MANUFACTURER'S RECOMMENDATIONS. REFER TO FINISH SCHEDULE AND COLOR LEGEND ON IS1 FOR FINISH TYPES AND ADDITIONAL REQUIREMENTS. REFER TO ENLARGED PLANS AND ELEVATIONS FOR ADDITIONAL REQUIREMENTS.
- F. ROLL DOWN SECURITY SHUTTERS SHALL REMAIN IN OPEN POSITION DURING HOURS OF OPERATION.
- G. SEE SHEET A1.1 FOR WALL TYPES.
- H. GC SHALL ENSURE AN EMERGENCY RELEASE LATCH IS FURNISHED WITH ROLL-DOWN SECURITY SHUTTER AT ENTRY DOOR. THE RELEASE SHALL CONFIRM TO ALL APPLICABLE CODES AND GENERAL HARDWARE NOTES.
- I. GC TO VIF EXISTING WALLS ARE STRAIGHT /LEVEL & PLUMB. REPORT ISSUES TO CONSTRUCTION PROJECT MANAGER.

**KEY NOTES:**

1. EXISTING STOREFRONT SYSTEM - SEE STOREFRONT ELEVATIONS
2. FIRE EXTINGUISHER - FIRE EXTINGUISHERS MOUNTED WITH BOTTOM OF EXTINGUISHER AT 2" AFF MAX. PRIOR TO INSTALLATION, COORDINATE EXACT LOCATION & QUANTITY WITH FIRE MARSHAL/INSPECTOR. SEE NOTES ON CS, COSMIC 10E, 10LB DRY CHEMICAL ABC PER LANDLORD REQUIREMENTS
3. ELECTRICAL EQUIPMENT LOCATION - SEE ELECTRICAL DRAWINGS
4. OUTLINE OF CASHWRAP & BACKWRAP - SEE FIXTURE PLAN
5. NOT USED
6. ROLL-DOWN SECURITY SHUTTER AND POSTS - GC TO COORDINATE INSTALL WITH VENDOR
7. MANAGER SUPPORT DESK (EXCALBUR) - SEE FIXTURE PLAN
8. NETWORK RACK - SEE DATA PLAN
9. NEW STOREFRONT SYSTEM - INFILL TO MATCH EXISTING. ALL NEW ENVELOPE STOREFRONT GLAZING IS TO ADHERE TO THE FOLLOWING MAXIMUM REQUIREMENTS:  
 U-FACTOR (FIXED FENESTRATION): 0.70  
 U-FACTOR (ENTRY DOORS): 1.10  
 U-FACTOR (ALL OTHERS): 0.75  
 SHGC: 0.40
10. PROVIDE 18 GA 2" X 2" STEEL CORNER GUARD (BLACK) FROM FLOOR TO CEILING AT ALL OUTSIDE CORNERS IN PUBLIC AREAS, TYP.
11. EX COLUMN, PAINT (P-2)
12. EX DOOR IS TO BE WELDED SHUT. REMOVE ALL HARDWARE AND PROVIDE COVER PLATES ON REMAINING HOLES
13. (1) 3' X 3/4" X 3/4" FR PLYWOOD PANEL FROM TOP OF NETWORK RACK TO US CLG FOR VENDOR USE.

**SYMBOL LEGEND:**

- (X) DOORS - SEE DOOR & HARDWARE SCHEDULE  
 (K) WALL TYPE - SEE WALL TYPE SCHEDULE



1 CONSTRUCTION PLAN  
 SCALE: 1/4" = 1'-0"

Order Plans @



NO.	DATE	DESCRIPTION