

HVAC POWER RENOVATION PLAN NOTES:

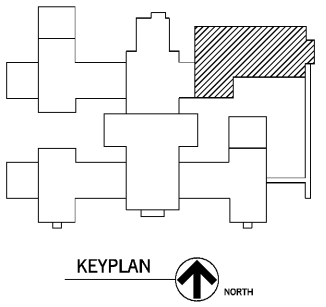
- 1. EXISTING OVERHEAD FANS TO REMAIN IN PLACE. DO NOT DEMOLISH POWER TO THESE UNITS.
- 2. RECONNECT NEW MECHANICAL EQUIPMENT TO EXISTING CIRCUIT MAINTAINED FROM DEMOLITION. PROVIDE NEW DISCONNECT AND CONNECTION TO THIS LOCATION. PROVIDE NEW SECONDARY SIDE GRS CONDUIT AND LIQUID TIGHT METAL FLEX AS REQUIRED FOR CONNECTION TO NEW HVAC EQUIPMENT. CONDUCTORS SHALL MATCH EXISTING BRANCH CIRCUIT SIZE.
- 3. PROVIDE POWER AND COMM. CABLING AND CONDUIT BETWEEN INDOOR UNIT AND OUTDOOR UNIT. REFER TO MECHANICAL EQUIPMENT SHOP DRAWINGS.
- 4. CONNECT TO CLOSEST EXISTING RECEPTACLE CIRCUIT. CIRCUIT SIZE IS 3#12 AWG CU THWN IN (11)1/2".
- 5. MARK ANY UNUSED CIRCUIT BREAKERS FROM THE REMOVAL OF OLD MECHANICAL EQUIPMENT AS SPARE.
- 6. PROVIDE SINGLE GANG OUTLET BOX FLUSH MOUNTED IN WALL AT 80" AFF (WHERE INSTALLED IN SUSPENDED CEILING, PROVIDED T-GRID BOX HANGER W/ FLUSH MOUNT OUTLET BOX). PROVIDE 3/4" CONDUIT TO PAD MOUNTED HVAC UNIT FOR INTERCONNECTION OF DUCT DETECTOR PROVIDED AND INSTALLED IN HVAC UNIT WITH MONITOR MODULE PROVIDED AND INSTALLED BY DIV. 26. PROVIDE ALL NECESSARY WIRING AND COMPONENTS TO INTERFACE WITH DUCT DETECTOR. DUCT DETECTOR SHALL BE FULLY COMPATIBLE WITH EXISTING FIRE ALARM SYSTEM. COORDINATE EXACT REQUIREMENTS WITH DIV. 23 CONTRACTOR PRIOR TO ROUGH-IN.
- 7. PROVIDE FLUSH MOUNT OUTLET BOX AT 46" AFF FOR HVAC CONTROLS. PROVIDE A MINIMUM OF 3/4" FROM OUTLET BOX TO OUTSIDE UNIT OR MAIN CONTROL PANEL. COORDINATE BOX SIZE, ORIENTATION AND CONDUIT ROUTING REQUIREMENTS WITH HVAC CONTRACTOR PRIOR TO ROUGH-IN. LEAVE CONDUIT WITH BUSHED OPENING AND PULL STRING INSTALLED. (TYP)

- 8. DUCT DETECTOR FURNISHED AND INSTALLED IN HVAC UNIT BY MANUFACTURER. PROVIDE FIRE ALARM MONITOR MODULE INSTALLED INSIDE BUILDING. FIRE ALARM CONTRACTOR SHALL COORDINATE INSTALLATION REQUIREMENTS W/ MECH CONTRACTOR.
- 9. PROVIDE A MINIMUM 3/4" CONDUIT FOR HVAC CONTROLS CABLING BACK TO NEAREST CONTROL PANEL. COORDINATE CONDUIT REQUIREMENTS AND CONTROL PANEL LOCATION W/ VENDOR SHOP DRAWINGS PRIOR TO ROUGH-IN.
- 10. NEW BRANCH CIRCUIT, REFER TO PANELBOARD SCHEDULE FOR SIZE/COUNT OF CONDUIT AND CONDUCTORS.
- 11. REPLACE RECEPTACLE AT THIS LOCATION WITH NEW 20A GFCI/WR DUPLEX RECEPTACLE AND NEW CAST METAL WHILE-IN-USE COVER.
- 12. 8"x8"x4" NEMA 4 JUNCTION BOX MOUNTED ON EXTERIOR OF BUILDING 24" AFF FOR TERMINATION OF LOW VOLTAGE CONDUITS ROUTED BELOW GRADE FROM HVAC EQUIPMENT. PROVIDE (2) 1" C ROUTED UP WALL FROM THIS BOX AND PENETRATE EXTERIOR WALL ABOVE SUSPENDED CEILING. PROVIDE LBS AT WALL PENETRATION AND TERMINATE ALL CONDUITS WITH BUSHED OPENINGS AND LEAVE WITH PULL STRINGS. LABEL EACH CONDUIT DESTINATION INSIDE JUNCTION BOX.
- 13. PROVIDE POWER AND DATA NETWORK CONNECTIONS TO HVAC CONTROL PANEL IN THIS SPACE. COORDINATE ROUGH-IN REQUIREMENTS WITH HVAC CONTRACTOR PRIOR TO INSTALLATION.
- 14. EXISTING FIRE ALARM DUCT DETECTOR TO REMAIN, PROTECT FROM DAMAGE.
- 15. ALL LOW VOLTAGE CABLING ROUTED THROUGH THIS SPACE SHALL BE INSTALLED IN CONDUIT.

HVAC RENOVATION PLAN - GENERAL NOTES:

- A. RACEWAY INSTALLED ON EXTERIOR OF BUILDING SHALL BE GALVANIZED RIGID STEEL (GRS) AND PENETRATIONS TO LIQUID TIGHT FLEXIBLE METAL CONDUIT (LFMC) FOR CONNECTION TO MECHANICAL EQUIPMENT. COORDINATE CONNECTION POINT(S) WITH VENDOR SHOP DRAWINGS PRIOR TO ROUGH-IN.
- B. CONTRACTOR SHALL INCLUDE A PRIVATE UTILITY LOCATE IN THE AREAS WHERE NEW UNDERGROUND RACEWAY WILL BE ADDED.
- C. EXPOSED RACEWAY ON INTERIOR AND EXTERIOR OF BUILDING SHALL BE PAINTED TO MATCH WALL AND STRUCTURE/CEILING.
- D. ALL WALL PENETRATIONS SHALL BE CORE DRILLED. ALL WALL PENETRATIONS SHALL BE SEALED ABOUT CONDUIT TO RESTORE WALL RATING.

GYMNASIUM - ELECTRICAL RENOVATION PLAN L12 E102
1/8" = 1'-0"



Southern A&E ARCHITECTS & ENGINEERS
 7951 Iron Circle
 Austell, Ga. 30168
 (770) 819-7777
 DATE: December 10 2019
 JOB NUMBER: 01 610 292

HVAC RENOVATIONS FOR:
LEE MIDDLE SCHOOL GYMNASIUM
 COWETA COUNTY SCHOOL SYSTEM
 NEWNAN, GEORGIA

STATE OF GEORGIA REGISTERED ARCHITECT
 GREGOR SCHULING
 No. 8787
 PROFESSIONAL ARCHITECT
 W. K. E. CAMPO, JR.
 REGISTERED ARCHITECT

DRAWING NUMBER: **E102**