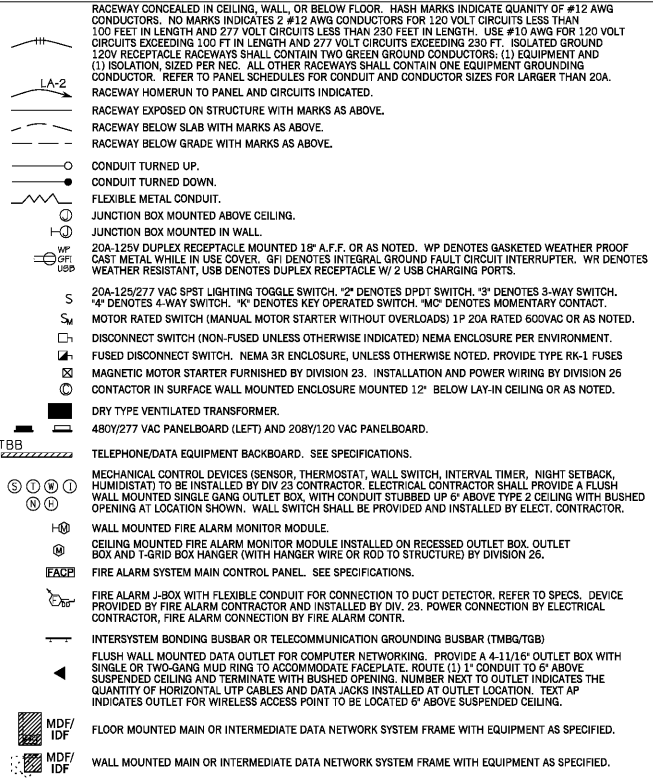


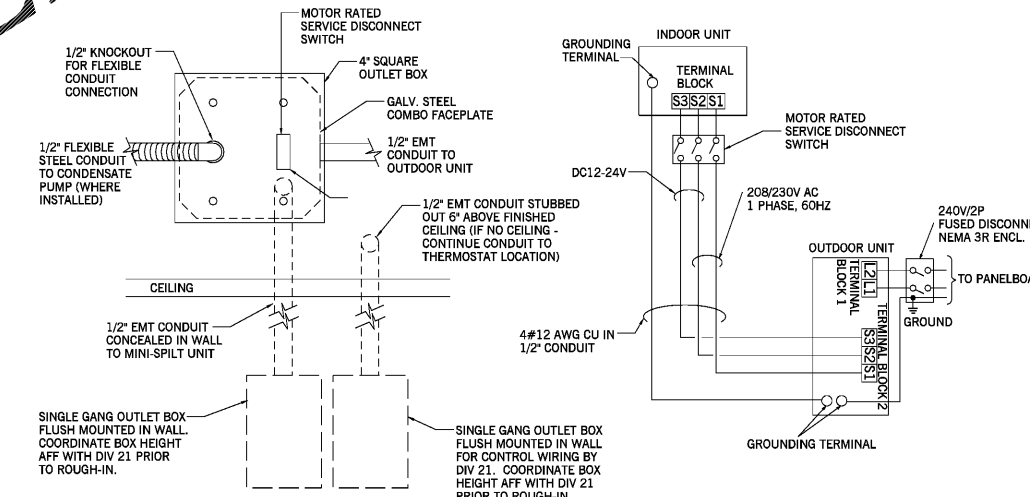
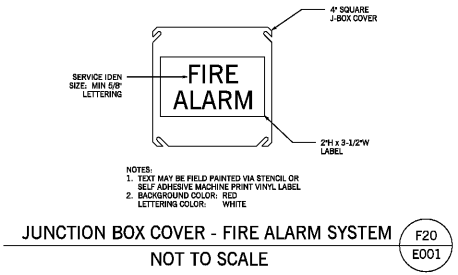
ELECTRICAL SYMBOLS LEGEND

note: all symbols do not necessarily appear on drawings.



- MECHANICAL EQ. CONN. SCHED NOTES:
1. PROVIDE CONDUIT FOR CONTROL WIRING AS SHOWN ON DETAIL SHEET.
2. COORDINATE HEIGHT OF JUNCTION BOX WITH MECHANICAL CONTRACTOR. PROVIDE POWER CONNECTION TO CONDENSATE PUMP (WHERE INSTALLED). REFER TO DETAIL SHEET.
3. FOR ALL HVAC EQUIPMENT, PROVIDE MINIMUM OF 1/2" FROM ACCESSIBLE CEILING AND/OR CONTROL PANEL TO UNIT CONNECTION POINT FOR CONTROL WIRING BY OTHERS.
4. REFER TO MECHANICAL DRAWINGS FOR EXHAUST FAN INTERLOCK WITH LIGHTS. PROVIDE RELAY AS REQUIRED. COORDINATE WITH MECHANICAL CONTRACTOR.

UNIT	DESCRIPTION	VOLTAGE	TYPE DISCONNECT	COMMENTS
AHU-F01-F02	AIR HANDLING UNIT	480/3	30/3 FUSED DISCONNECT IN NEMA 1	FUSE PER NAMEPLATE DATA
CU-F01A-F01B,F02A-F02B	REMOTE CONDENSER UNIT	208/1	60/2 FUSED DISCONNECT IN NEMA 3R	FUSE PER NAMEPLATE DATA
EF-F03-F08	EXHAUST FAN	120/1	MOTOR RATED SWITCH	NOTE 4
EH-F01-F04	ELECTRIC HEATER	277/1	PROVIDED WITH UNIT	
ERU-F01-F02	ENERGY RECOVERY UNIT	480/3	60/3 FUSED DISCONNECT IN NEMA 3R	FUSE PER NAMEPLATE DATA
DF-F01-F02	GAS FIRED FURNACE	120/1	MOTOR RATED SWITCH	
MAHU-F01-F04	MINI-SPLIT AIR-HANDLER (INDOOR)	208/1	3 POLE MOTOR RATED SWITCH LOCATED ABOVE CEILING	CONTROL CONDUIT BY DIV 26 CONTRACTOR NOTE 2
MHP-F01-F04	MINI-SPLIT HEAT PUMP (OUTDOOR)	208/1	30/2 FUSED DISCONNECT IN NEMA 3R	CONTROL CONDUIT BY DIV 26 CONTRACTOR REFER TO DETAIL
PMU-F01-F02	PAD MOUNT UNIT	480/3	100/3 FUSED DISCONNECT IN NEMA 3R	FUSE PER NAMEPLATE DATA
TWHP-F01	THRU WALL HEAT PUMP	208/1	RECEPTACLE PER MANUFACT. INFO	PROVIDE CONDUIT FOR REMOTE THERMOSTAT WIRING



480Y/277V 3-Phase 4-Wire LIGHTING PANEL Name: HF Section 1
Main: 600A MLO Door: Yes Min Size I.C.: 25000 Fed From: NSC Feeder: Note 2
Neutral: S/N Ground bar: Yes Provide 600A feed-thru lugs

CIR DESCRIPTION	CONDUIT	PHASE	NEUT	GND	TRIP	POLES			TRIP	CONDUIT	PHASE	NEUT	GND	DESCRIPTION	CIR	
						A	B	C								
1 EXISTING CIRCUIT	Note 3	#12	#12	#12	20	1	---	---	---	1	20	Note 3	#12	#12	EXISTING CIRCUIT 2	43
3 EXISTING CIRCUIT	Note 3	#12	#12	#12	20	1	---	---	---	1	20	Note 3	#12	#12	EXISTING CIRCUIT 4	45
5 EXISTING CIRCUIT	Note 3	#12	#12	#12	20	1	---	---	---	1	20	Note 3	#12	#12	EXISTING CIRCUIT 6	47
7 EXISTING CIRCUIT	Note 3	#12	#12	#12	20	1	4000	---	---	1	20	Note 3	#12	#12	EXISTING CIRCUIT 8	49
9 EXISTING CIRCUIT	Note 3	#12	#12	#12	20	1	4000	---	---	1	20	Note 3	#12	#12	EXISTING CIRCUIT 10	51
11 EXISTING CIRCUIT	Note 3	#12	#12	#12	20	1	4000	---	---	1	20	Note 3	#12	#12	EXISTING CIRCUIT 12	53
13 EXISTING CIRCUIT	Note 3	#12	#12	#12	20	1	---	---	---	1	20	Note 3	#12	#12	EXISTING CIRCUIT 14	55
15 EXISTING SPARE	---	---	---	---	---	---	---	---	---	---	---	---	---	---	EXISTING CIRCUIT 16	57
17 EXISTING SPARE	---	---	---	---	---	---	---	---	---	---	---	---	---	---	EXISTING CIRCUIT 18	59
19 EXISTING SPARE	---	---	---	---	---	---	---	---	---	---	---	---	---	---	EXISTING CIRCUIT 20	61
21 Space only	---	---	---	---	---	---	---	---	---	---	---	---	---	---	EXISTING CIRCUIT 22	63
23 Space only	---	---	---	---	---	---	---	---	---	---	---	---	---	---	EXISTING CIRCUIT 24	65
25 Space only	---	---	---	---	---	---	---	---	---	---	---	---	---	---	EXISTING CIRCUIT 26	67
27 Space only	---	---	---	---	---	---	---	---	---	---	---	---	---	---	EXISTING CIRCUIT 28	69
29 Space only	---	---	---	---	---	---	---	---	---	---	---	---	---	---	EXISTING CIRCUIT 30	71
31 Space only	---	---	---	---	---	---	---	---	---	---	---	---	---	---	EXISTING CIRCUIT 32	73
33 Space only	---	---	---	---	---	---	---	---	---	---	---	---	---	---	EXISTING CIRCUIT 34	75
35 Space only	---	---	---	---	---	---	---	---	---	---	---	---	---	---	EXISTING CIRCUIT 36	77
37 Space only	---	---	---	---	---	---	---	---	---	---	---	---	---	---	EXISTING CIRCUIT 38	79
39 Space only	---	---	---	---	---	---	---	---	---	---	---	---	---	---	EXISTING CIRCUIT 40	81
41 Space only	---	---	---	---	---	---	---	---	---	---	---	---	---	---	EXISTING CIRCUIT 42	83

Phase load totals: A 7592, B 7290, C 7163

208Y/120V 3-Phase 4-Wire LIGHTING PANEL Name: HF Section 2
Main: 100A MLO Door: Yes Min Size I.C.: 25000 Fed From: LF Feeder: Note 1

CIR DESCRIPTION	CONDUIT	PHASE	NEUT	GND	TRIP	POLES			TRIP	CONDUIT	PHASE	NEUT	GND	DESCRIPTION	CIR
						A	B	C							
43 EXISTING SPARE	3/4"	#8	---	#10	35	3	7039	---	---	---	---	---	---	Space only	44
45 EXISTING SPARE	---	---	---	---	---	---	---	---	---	---	---	---	---	Space only	46
47 EXISTING SPARE	---	---	---	---	---	---	---	---	---	---	---	---	---	Space only	48
49 ERU-F02	3/4"	#8	---	#10	35	3	7039	---	---	---	---	---	---	Space only	50
51 EXISTING SPARE	---	---	---	---	---	---	---	---	---	---	---	---	---	Space only	52
53 EXISTING SPARE	---	---	---	---	---	---	---	---	---	---	---	---	---	Space only	54
55 MHP/MAHU-F02	1"	#3	---	#8	100	3	21727	---	---	---	#12	---	#12	AHU-F01 MECH 617	56
57 EXISTING SPARE	---	---	---	---	---	---	---	---	---	---	---	---	---	Space only	58
59 EXISTING SPARE	---	---	---	---	---	---	---	---	---	---	---	---	---	Space only	60
61 MHP-F02	1"	#3	---	#8	100	3	21727	---	---	---	#12	---	#12	Space only	62
63 EXISTING SPARE	---	---	---	---	---	---	---	---	---	---	---	---	---	Space only	64
65 EXISTING SPARE	---	---	---	---	---	---	---	---	---	---	---	---	---	Space only	66
67 EXISTING SPARE	---	---	---	---	---	---	---	---	---	---	---	---	---	Space only	68
69 EXISTING SPARE	---	---	---	---	---	---	---	---	---	---	---	---	---	Space only	70
71 EXISTING SPARE	---	---	---	---	---	---	---	---	---	---	---	---	---	Space only	72
73 XTP	(1)1 1/2" 2/0	---	#6	175	3	8947	721	---	---	---	#12	---	#12	AHU-F02 MECH 629	74
75 EXISTING SPARE	---	---	---	---	---	---	---	---	---	---	---	---	---	Space only	76
77 EXISTING SPARE	---	---	---	---	---	---	---	---	---	---	---	---	---	Space only	78
79 EXH-S	1/2"	#12	---	#12	15	3	---	---	---	---	#12	---	#12	EXISTING SPARE	80
81 EXISTING SPARE	---	---	---	---	---	---	---	---	---	---	---	---	---	Space only	82
83 EXISTING SPARE	---	---	---	---	---	---	---	---	---	---	---	---	---	Space only	84

Phase load totals: A 7592, B 7290, C 7163

208Y/120V 3-Phase 4-Wire LIGHTING PANEL Name: LFB Section 2
Main: 100A MLO Door: Yes Min Size I.C.: 22000 Fed From: LF Feeder: Note 2

CIR DESCRIPTION	CONDUIT	PHASE	NEUT	GND	TRIP	POLES			TRIP	CONDUIT	PHASE	NEUT	GND	DESCRIPTION	CIR
						A	B	C							
1 EXISTING SPARE	---	---	---	---	---	---	---	---	---	---	---	---	---	STOVE RM 631	2
3 EXISTING SPARE	---	---	---	---	---	---	---	---	---	---	---	---	---	---	4
5 EXISTING SPARE	---	---	---	---	---	---	---	---	---	---	---	---	---	CU-F01A	6
7 EXISTING SPARE	---	---	---	---	---	---	---	---	---	---	---	---	---	---	8
9 EXISTING SPARE	---	---	---	---	---	---	---	---	---	---	---	---	---	CU-F01B	10
11 EXISTING SPARE	---	---	---	---	---	---	---	---	---	---	---	---	---	---	12
13 MHP/MAHU-F02	1/2"	#12	---	#12	15	2	595	1882	---	---	#5	---	#8	CU-F02A	14
15 EXISTING SPARE	---	---	---	---	---	---	---	---	---	---	---	---	---	---	16
17 MHP/MAHU-F03	1/2"	#12	---	#12	20	2	858	1757	---	---	#5	---	#8	CU-F02B	18
19 EXISTING SPARE	---	---	---	---	---	---	---	---	---	---	---	---	---	---	20
21 MHP/MAHU-F04	1/2"	#12	---	#12	15	2	595	1757	---	---	#5	---	#8	---	22
23 EXISTING SPARE	---	---	---	---	---	---	---	---	---	---	---	---	---	---	24
25 Space only	---	---	---	---	---	---	---	---	---	---	---	---	---	---	26
27 Space only	---	---	---	---	---	---	---	---	---	---	---	---	---	---	28
29 Space only	---	---	---	---	---	---	---	---	---	---	---	---	---	---	30

Phase load totals: A 10850, B 9129, C 6995

PANEL SCHEDULES THIS SHEET:
HF(1) HF(2) LFB

NOTE:
ON PANELBOARD DIRECTORIES, CONTRACTOR SHALL ADD SUFFICIENT TEXT TO EACH CIRCUIT DESCRIPTION SO AS TO DIFFERENTIATE EACH CIRCUIT FROM ALL OTHERS, IN COMPLIANCE WITH 2014 NEC ARTICLE 408

Southern A/E REGISTERED ARCHITECTS & ENGINEERS
7951 Iron Circle, Austell, Ga. 30168 (770) 819-7777
DATE: December 10 2019
JOB NUMBER: 01 610 292

HVAC RENOVATIONS FOR:
LEE MIDDLE SCHOOL GYMNASIUM
COWETA COUNTY SCHOOL SYSTEM
NEWNAN, GEORGIA

DRAWING NUMBER: **E001**