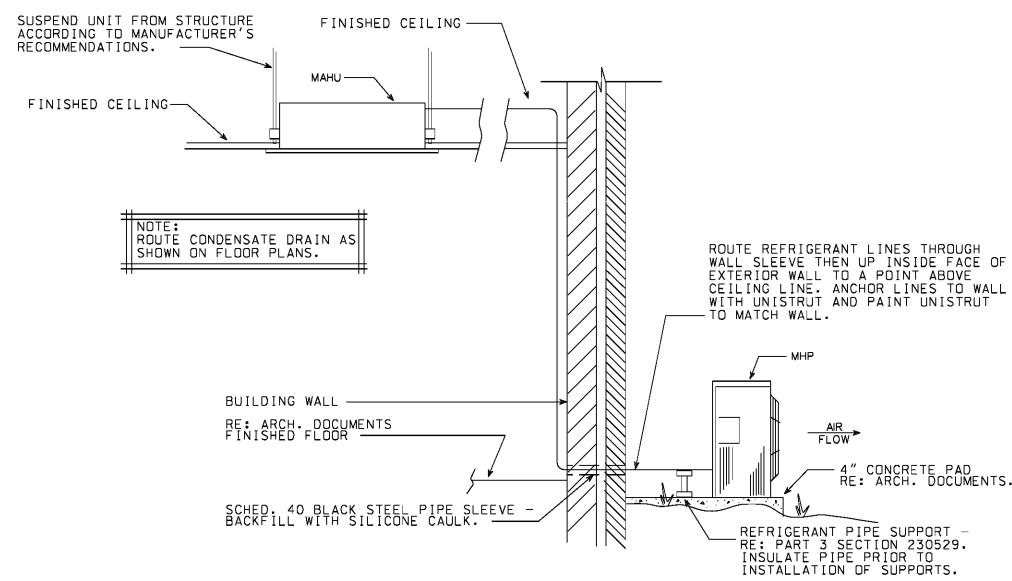
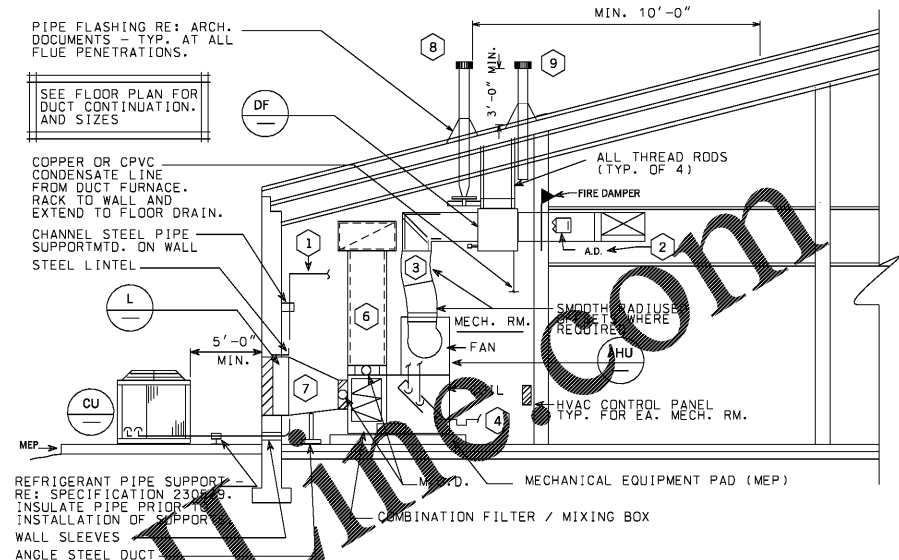


A
B
C
D
E
F
G
H
I
J
K
L
M
N

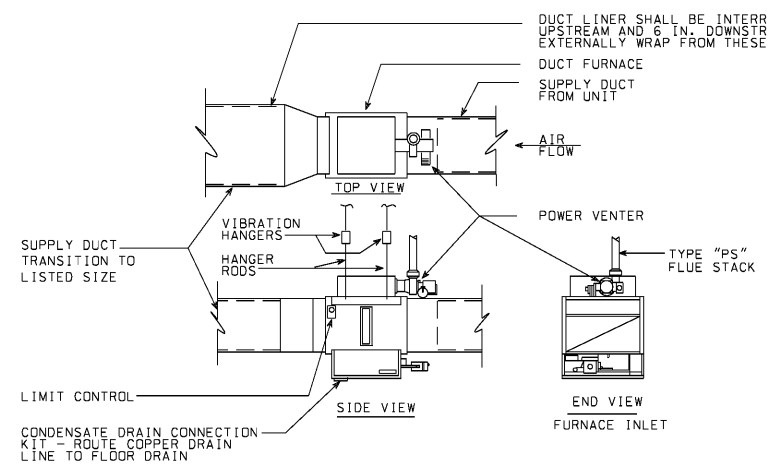


DETAIL- MINI SPLIT CEILING INSTALLATION E6
No Scale M503

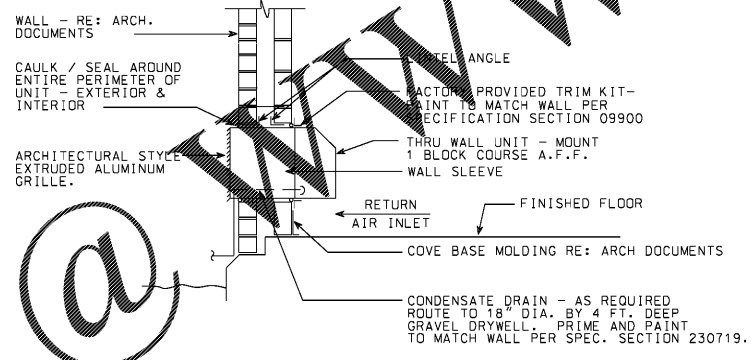
- KEYED MECHANICAL ROOM NOTES:**
- 1 NEATLY RACK AND SECURE REFRIGERANT PIPING TO MEP IN COMPLIANCE WITH PART 3 OF SPEC. SECTION 230529. ROUTE THROUGH WALL SLEEVE AND RISE UP INTERIOR FACE OF WALL. RUN OVERHEAD AND DROP TO COIL CONNECTION ON UNIT. PROVIDE RODS, HANGERS AND SADDLES AS REQUIRED. BACKFILL WALL SLEEVE WITH SILICONE CAULK. CONDENSING UNITS LOCATED IN FRONT OF OUTSIDE AIR LOUVERS SHALL BE LOCATED A MINIMUM OF 5'-0" AWAY FROM FACE OF LOUVER. PROVIDE ALL REFRIGERANT SPECIALTIES AS RECOMMENDED BY MANUFACTURER.
 - 2 HINGED DUCT ACCESS DOOR - MINIMUM 12" X 12" - RUSKIN ADH-1 OR EQUIVALENT.
 - 3 TRANSITION DUCT IN THE VERTICAL FROM FULL SIZE OF UNIT DISCHARGE TO CONNECTION ON DUCT FURNACE
 - 4 FULL SIZE TRAPPED CONDENSATE DRAIN LINE - FROM UNIT DRAIN CONNECTION TO FLOOR DRAIN - RE: PLBG. DOCUMENTS FOR FLOOR DRAINS.
 - 5 ACCESS / CLEARANCE AREA FOR COIL PULL.
 - 6 EXTEND LINED RETURN DUCT UP FROM FILTER / MIXING BOX, SAME SIZE AS COLLAR, AND TAP INTO BOTTOM OF LINED RETURN DUCT.
 - 7 CONNECT DUCT FROM FULL SIZE OF FILTER / MIXING BOX OPENING TO PLENUM BEHIND LOUVER. PLENUM FULL SIZE OF LOUVER FACE BY 12" DEEP - MOUNT LOUVER ONE BLOCK COURSE A.F.F.
 - 8 TYPE "PS" GAS VENT FROM DUCT FURNACE. TERMINATE WITH RAIN CAP. OFF-SET TO MISS STRUCTURE AS REQUIRED. SEE EQUIPMENT SCHEDULE FOR SIZE.
 - 9 12" DIA. COMBUSTION AIR OPENING. SEE DETAIL JXMX



DETAIL- SECTION THROUGH TYPICAL MECH. RM W/ DUCT FURNACE E18
No Scale M503

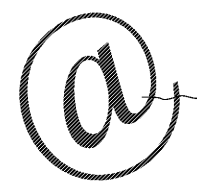


DETAIL - DUCT FURNACE J8
No Scale M503



DETAIL- THRU WALL HEAT PUMP J12
No Scale M503

Order Plans



<p>Southern A&E 7951 Troon Circle Austell, Ga. 30168 (770) 819-7777 architects & engineers</p>	<p>REVISED December 20 2019</p>
	<p>DATE December 10 2019</p>
<p>© COPYRIGHT 2019 BY SOUTHERN A&E, LLC. ALL RIGHTS RESERVED. THIS DOCUMENT IS THE PROPERTY OF SOUTHERN A&E, LLC AND SHALL NOT BE COPIED OR REPRODUCED IN WHOLE OR IN PART WITHOUT EXPRESSED WRITTEN CONSENT FROM SOUTHERN A&E, LLC.</p>	<p>JOB NUMBER 01 610 292</p>
<p>HVAC RENOVATIONS FOR: LEE MIDDLE SCHOOL GYMNASIUM COWETA COUNTY SCHOOL SYSTEM NEWNAN, GEORGIA</p>	
<p>STATE OF GEORGIA REGISTERED ARCHITECT GREGORY SCHILLING</p>	<p>STATE OF GEORGIA REGISTERED ENGINEER MICHAEL C. WALDRON</p>
<p>DRAWING NUMBER M503</p>	