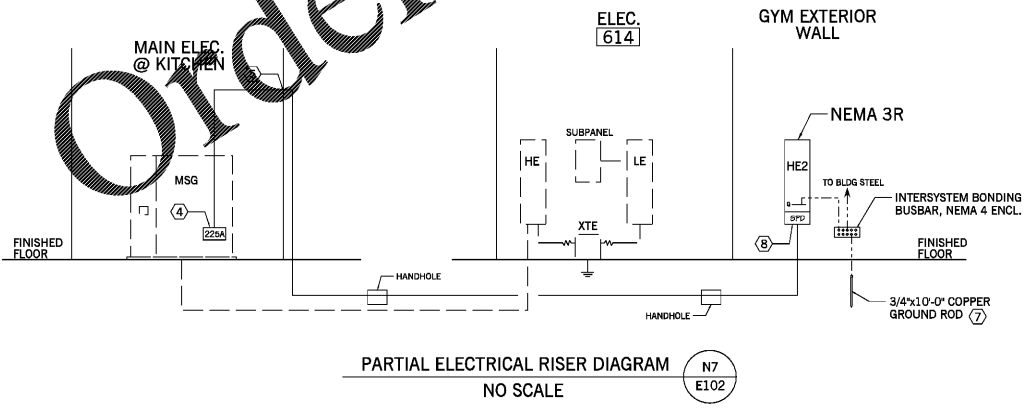


- HVAC POWER RENOVATION PLAN NOTES:
- EXISTING OVERHEAD FANS TO REMAIN IN PLACE. DO NOT DEMOLISH POWER TO THESE UNITS.
 - RECONNECT NEW MECHANICAL EQUIPMENT TO EXISTING CIRCUIT MAINTAINED FROM DEMOLITION.
 - PROVIDE POWER AND COMM. CABLING AND CONDUIT BETWEEN INDOOR UNIT AND OUTDOOR UNIT. REFER TO MECHANICAL EQUIPMENT SHOP DRAWINGS.
 - NEW DUPLEX RECEPTACLE INSTALLED INSIDE EXISTING DATA RACK. CIRCUIT SIZE IS 3#12 AWG CU THWN IN (1)1/2" CONDUIT FED FROM AN EXISTING 20A/1P/120V CIRCUIT BREAKER.
 - PROVIDE NEW 20A/1P/120V CIRCUIT TO PANEL AND POSITION INDICATED. CIRCUIT SIZE IS 3#12 AWG CU THWN IN (1)1/2" CONDUIT FED FROM A NEW 20A/1P/120V CIRCUIT BREAKER.
 - PROVIDE NEW 15A/2P/208V CIRCUIT TO PANEL AND POSITION INDICATED. CIRCUIT SIZE IS 3#12 AWG CU THWN IN (1)1/2" CONDUIT FED FROM A NEW 15A/2P/208V CIRCUIT BREAKER.
 - PROVIDE NEW 35A/3P/480V CIRCUIT TO PANEL AND POSITION INDICATED. CIRCUIT SIZE IS 3#8 AWG CU THWN AND 1#10 AWG CU THWN GRD IN (1)3/4" CONDUIT FED FROM A NEW 35A/3P/480V CIRCUIT BREAKER.
 - NEW PANEL HEZ, REFER TO PANELBOARD SCHEDULE AND RISE DIAGRAM FOR ADDITIONAL REQUIREMENTS.
 - CONNECT TO CLOSEST EXISTING RECEPTACLE CIRCUIT. PROVIDE 3#12 AWG CU THWN IN (1)1/2".
 - PROVIDE SINGLE GANG OUTLET BOX FLUSH MOUNTED TO WALL 1" AFF (WHERE INSTALLED IN SUSPENDED CEILING, PROVIDE T-GRID BOX HANGER W/ FLUSH MOUNT OUTLET BOX). PROVIDE 3/4" CONDUIT TO PAD MOUNTED HVAC UNIT FOR INTERCONNECTION OF DUCT DETECTOR PROVIDED AND INSTALLED IN HVAC UNIT WITH MONITOR MODULE PROVIDED AND INSTALLED BY DIV. 26. PROVIDE ALL NECESSARY MATERIALS AND COMPONENTS TO INTERFACE WITH DUCT DETECTOR. DUCT DETECTOR SHALL BE FULLY COMPATIBLE WITH EXISTING FIRE ALARM SYSTEM. COORDINATE EXACT REQUIREMENTS WITH DIV. 23 CONTRACTOR PRIOR TO ROUGH-IN.
 - EXISTING DATA NETWORK SYSTEM W/DF WALL CABINET TO REMAIN, PROTECT FROM DAMAGE.
 - PROVIDE FLUSH MOUNT OUTLET BOX AT 46" AFF FOR HVAC CONTROLS. PROVIDE A MINIMUM OF 1/2" FROM OUTLET BOX TO OUTSIDE UNIT OR MAIN CONTROL PANEL. COORDINATE BOX SIZE, ORIENTATION AND CONDUIT ROUTING REQUIREMENTS WITH HVAC CONTRACTOR PRIOR TO ROUGH-IN. LEAVE CONDUIT WITH BUSHED OPENING AND PULL STRING INSTALLED. (TYP)
 - PROVIDE POWER AND DATA NETWORK CONNECTIONS TO HVAC CONTROL PANEL IN THIS SPACE. COORDINATE ROUGH-IN REQUIREMENTS WITH HVAC CONTRACTOR PRIOR TO INSTALLATION.
 - DUCT DETECTOR FURNISHED AND INSTALLED IN HVAC UNIT BY MANUFACTURER. PROVIDE FIRE ALARM MONITOR MODULE INSTALLED INSIDE BUILDING. FIRE ALARM CONTRACTOR SHALL COORDINATE INSTALLATION REQ. W/ MECH CONTRACTOR.
 - 8"x8"x4" NEMA 4 JUNCTION BOX MOUNTED ON EXTERIOR OF BUILDING 24" AFF FOR TERMINATION OF LOW VOLTAGE CONDUITS ROUTED BELOW GRADE FROM HVAC EQUIPMENT. PROVIDE (2) 1" C ROUTED UP WALL FROM THIS BOX AND PENETRATE EXTERIOR WALL ABOVE SUSPENDED CEILING. PROVIDE LBS AT WALL PENETRATION AND TERMINATE ALL CONDUITS WITH BUSHED OPENINGS AND LEAVE WITH PULL STRINGS. LABEL EACH CONDUIT DESTINATION INSIDE JUNCTION BOX.
 - NEW BRANCH CIRCUIT, REFER TO PANELBOARD SCHEDULE FOR SIZE/COUNT OF CONDUIT AND CONDUCTORS.
 - ALL LOW VOLTAGE CABLING IN THIS SPACE SHALL BE INSTALLED IN CONDUIT.

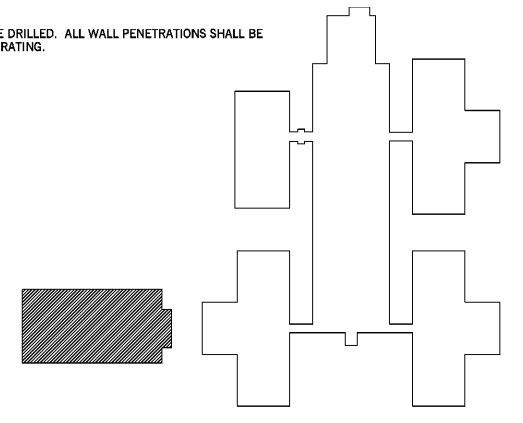
- HVAC RENOVATION PLAN - GENERAL NOTES:
- RACEWAY INSTALLED ON EXTERIOR OF BUILDING SHALL BE GALVANIZED RIGID STEEL (GRS) AND TRANSITION TO LIQUID TIGHT FLEXIBLE METAL CONDUIT (LFMC) FOR CONNECTION TO MECHANICAL EQUIPMENT. COORDINATE CONNECTION POINT(S) WITH VENDOR SHOP DRAWINGS PRIOR TO ROUGH-IN.
 - CONTRACTOR SHALL INCLUDE A PRIVATE UTILITY LOCATE IN THE AREAS WHERE NEW UNDERGROUND RACEWAY WILL BE ADDED.
 - EXPOSED RACEWAY ON INTERIOR AND EXTERIOR OF BUILDING SHALL BE PAINTED TO MATCH WALL AND STRUCTURE/CEILING.
 - ALL WALL PENETRATIONS SHALL BE CORE DRILLED. ALL WALL PENETRATIONS SHALL BE SEALED ABOUT CONDUIT TO RESTORE WALL RATING.

GYMNASIUM - ELECTRICAL RENOVATION PLAN J9
1" = 1'-0" E102



- ELECTRICAL RISER DIAGRAM NOTES:
- REFER TO PANELBOARD SCHEDULES FOR CONDUIT AND CONDUCTOR SIZES.
 - REFER TO SITE PLAN AND 1/8" SCALE DRAWINGS FOR LOCATIONS OF PANELS.
 - ELECTRICAL EQUIPMENT AND FEEDERS SHOWN IN SOLID LINES ARE NEW. ELECTRICAL EQUIPMENT AND FEEDERS SHOWN IN DASHED LINES ARE EXISTING TO REMAIN.
 - PROVIDE NEW 225A/3P/480V CIRCUIT BREAKER IN EXISTING EMPTY SPACE IN MSG. PROVIDE ALL NECESSARY PARTS AND PIECES REQUIRED TO MOUNT NEW CIRCUIT BREAKER IN THE OPEN SPACE.
 - CORE DRILL EXTERIOR WALL FOR CONDUIT PENETRATIONS. PROVIDE LB CONDULETS AS REQUIRED TO TURN DOWN WALL AND ROUTE CONDUIT UNDERGROUND TO PANEL HF. PAINT ALL EXPOSED CONDUIT TO MATCH STRUCTURE.
 - MARK ANY UNUSED CIRCUIT BREAKERS FROM THE REMOVAL OF OLD MECHANICAL EQUIPMENT AS SPARE.
 - PROVIDE A DRIVEN GROUND ROD FIVE FEET BEYOND THE BUILDING EXTERIOR WALL. PROVIDE GROUNDING CONDUCTOR SIZED PER SECTION 25 05 26 FROM PANEL GROUND BUS TO GROUND ROD. REFER TO GROUNDING SCHEMATIC.
 - SURGE PROTECTIVE DEVICE (SPD) PER SECTION 25 24 16. SPD SHALL BE INSTALLED BY AND SHIPPED FROM THE PANELBOARD MANUFACTURER'S FACTORY.

PARTIAL ELECTRICAL RISER DIAGRAM N7
NO SCALE E102



KEY PLAN

Southern A&E ARCHITECTS & ENGINEERS
7951 Iron Circle, Austell, Ga. 30168
(770) 819-7777
DATE: December 10 2019
JOB NUMBER: 01 610 296

HVAC RENOVATIONS FOR:
ARNALL MIDDLE SCHOOL GYMNASIUM
COWETA COUNTY SCHOOL SYSTEM
NEWNAN, GEORGIA

STATE OF GEORGIA REGISTERED ARCHITECT
GREGORY SCHULTE
No. 8787
PROFESSIONAL ARCHITECT
W. K. E. CAMPO, JR.
REGISTERED ARCHITECT

DRAWING NUMBER: **E102**