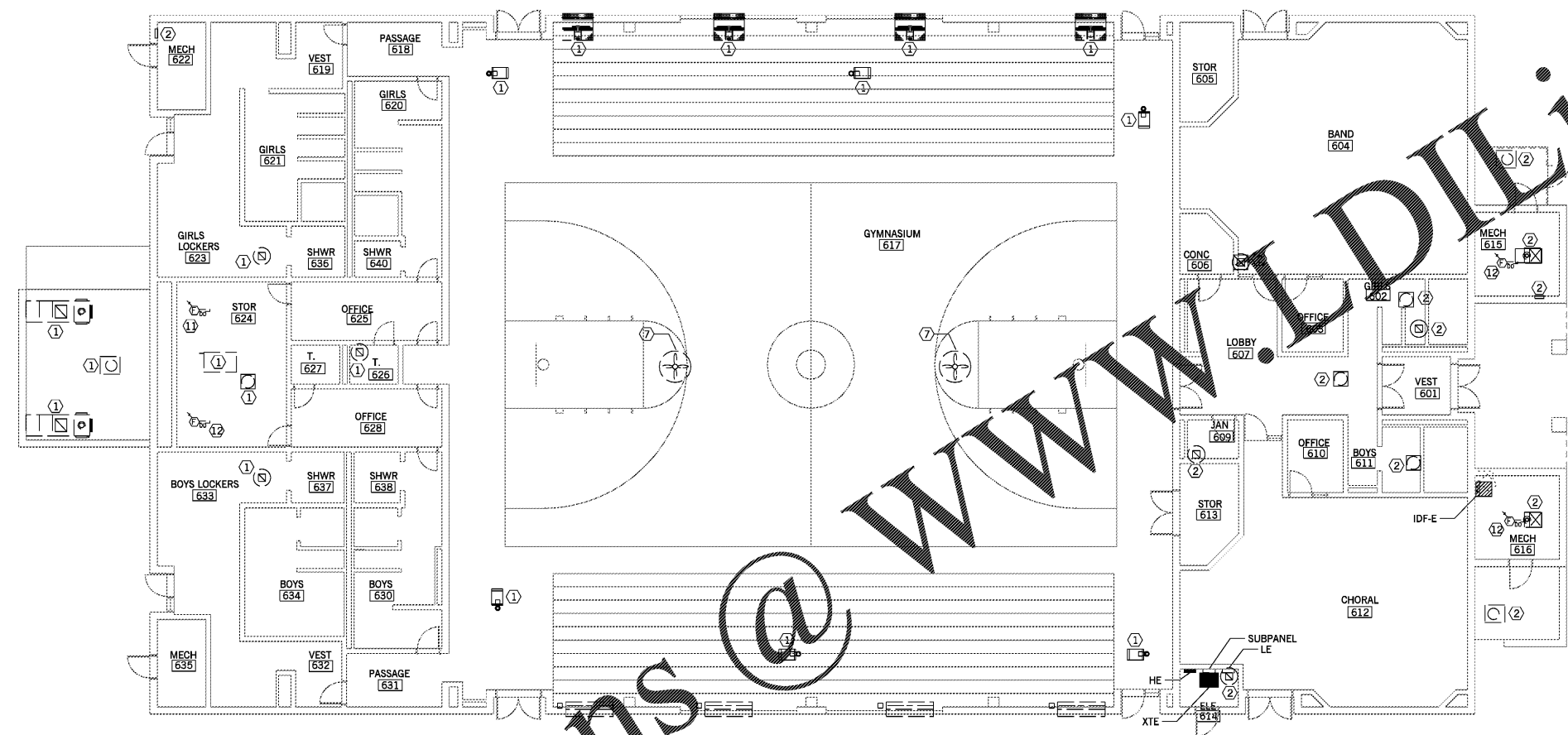
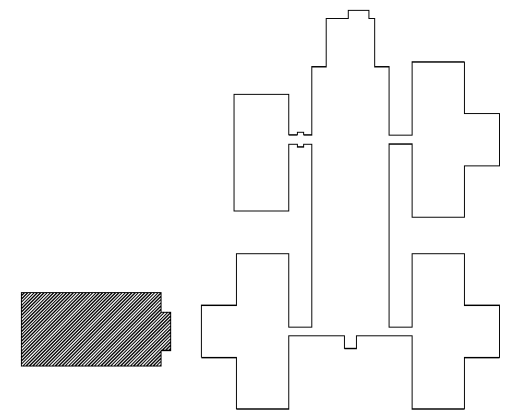


DEMOLITION PLAN NOTES

- EXISTING MECHANICAL EQUIPMENT TO BE REMOVED. DISCONNECT AND REMOVE CIRCUIT CONDUCTORS, EXPOSED RACEWAY AND DISCONNECT SWITCHES ASSOCIATED WITH MECHANICAL EQUIPMENT TO BE REMOVED.
- EXISTING MECHANICAL EQUIPMENT TO BE REPLACED. DEMOLISH EXISTING DISCONNECT BUT LEAVE CONDUIT AND CIRCUIT CONDUCTORS IN PLACE FOR RECONNECTION TO NEW MECHANICAL EQUIPMENT. REFER TO MECHANICAL DEMOLITION PLANS, AND ELECTRICAL POWER RENOVATION PLANS.
- WHERE EXISTING RACEWAY AND BOXES ARE CONCEALED IN WALLS ABOVE CEILINGS AND ARE SUITABLE FOR REUSE, CONTRACTOR MAY UTILIZE THEM FOR NEW WIRING AND/OR DEVICES.
- CONTRACTOR SHALL REMOVE ANY UNUSED RACEWAY WHERE EXPOSED, AND PROVIDE BLANK COVERS FOR ABANDONED RACEWAY BOXES.
- CONTRACTOR SHALL PROVIDE ALL LABOR AND MATERIALS TO MAINTAIN COMMUNICATIONS AND POWER SYSTEMS FUNCTIONS THROUGHOUT THE OCCUPIED PORTION OF THE BUILDING DURING DEMOLITION AND RENOVATION PHASES. ANY NECESSARY SYSTEM OUTAGES SHALL BE KEPT TO A MINIMUM AND COORDINATED WITH THE OWNER IN ADVANCE.
- UNLESS OTHERWISE NOTED, ALL ELECTRICAL PANELS AND GEAR SHALL REMAIN.
- EXISTING MECHANICAL EQUIPMENT TO REMAIN. DO NOT DEMOLISH POWER TO THIS PIECE OF MECHANICAL EQUIPMENT.
- THROUGHOUT RENOVATED AREAS, ABANDONED CABLE (INCLUDING CABLE ON ROOF) SHALL BE REMOVED IN ACCORDANCE WITH NEC ARTICLE 800.25.
- REVIEW ALL EQUIPMENT WITH OWNER TO DETERMINE WHAT EQUIPMENT THE OWNER DESIRES TO KEEP. REMOVE THIS EQUIPMENT WITH CARE AND TURN OVER TO OWNER. ITEMS NOT DESIRED BY THE OWNER SHALL BE DISPOSED IN ACCORDANCE WITH APPLICABLE REGULATIONS.
- CONTRACTOR SHALL RESTORE CONTINUITY TO ANY RECEPTACLE OR POWER CIRCUIT ONLY PARTIALLY REMOVED.
- EXISTING DUCT DETECTOR SHALL BE REMOVED. FIRE ALARM CABLING SHALL BE MAINTAINED AND PROTECTED FROM DAMAGE FOR CONNECTION TO NEW DUCT DETECTOR PER RENOVATION PLAN. COORDINATE WITH MECH CONTRACTOR.
- EXISTING FIRE ALARM DUCT DETECTOR AND ASSOCIATED EQUIPMENT/CABLING SHALL BE REMOVED. ALL REFERENCES AT MAIN FACP SHALL BE REMOVED AS WELL.



GYMNASIUM - ELECTRICAL DEMOLITION PLAN (J10 E101)  
 1/8" = 1'-0"



KEY PLAN

Order Plans @

<b>Southern A&amp;E</b> 7951 Troon Circle Austell, Ga. 30168 (770) 819-7777 architects & engineers		REVISIONS DATE December 10 2019 JOB NUMBER 01 610 296
© COPYRIGHT 2019 BY SOUTHERN A&E, LLC. ALL RIGHTS RESERVED. THIS DOCUMENT IS THE PROPERTY OF SOUTHERN A&E, LLC AND SHALL NOT BE COPIED OR REPRODUCED IN WHOLE OR IN PART WITHOUT EXPRESS WRITTEN CONSENT FROM SOUTHERN A&E, LLC.		
HVAC RENOVATIONS FOR: <b>ARNALL MIDDLE SCHOOL GYMNASIUM</b> COWETA COUNTY SCHOOL SYSTEM NEWNAN, GEORGIA		
STATE OF GEORGIA GREGORY SCHULTE REGISTERED ARCHITECT	STATE OF GEORGIA W. E. CAMPO, JR. REGISTERED PROFESSIONAL ENGINEER	DRAWING NUMBER <b>E101</b>