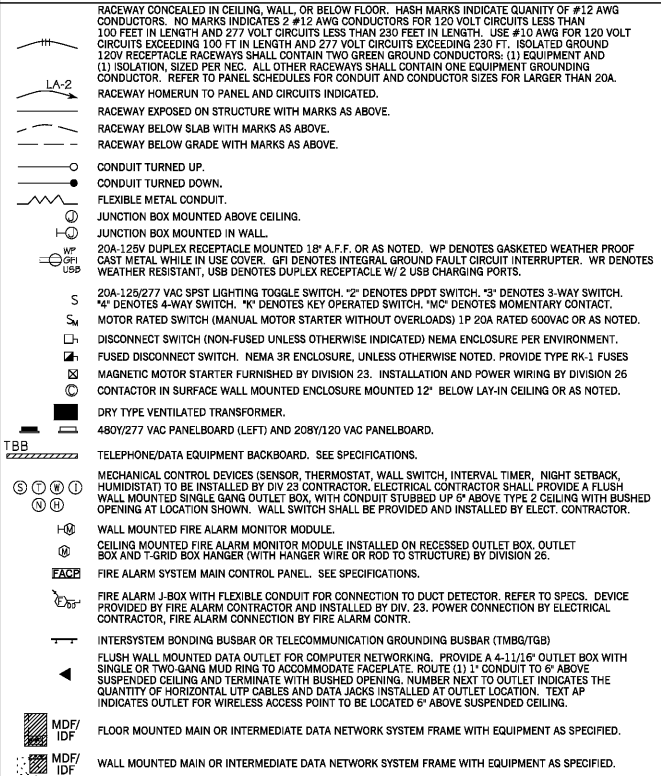


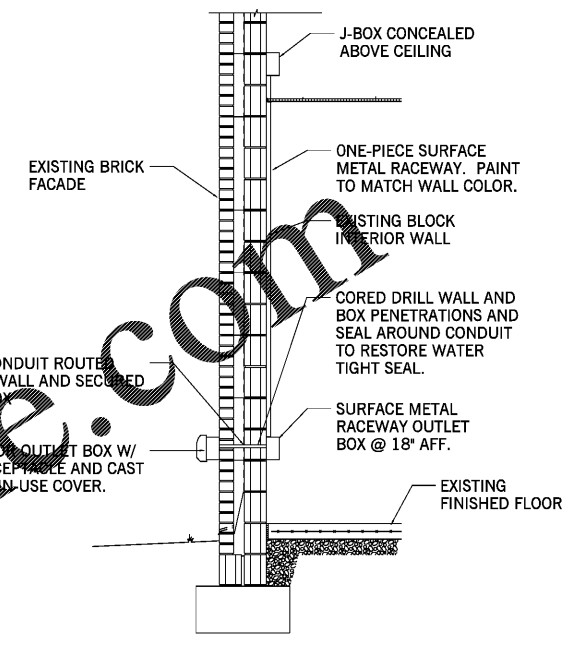
**ELECTRICAL SYMBOLS LEGEND**

note: all symbols do not necessarily appear on drawings.

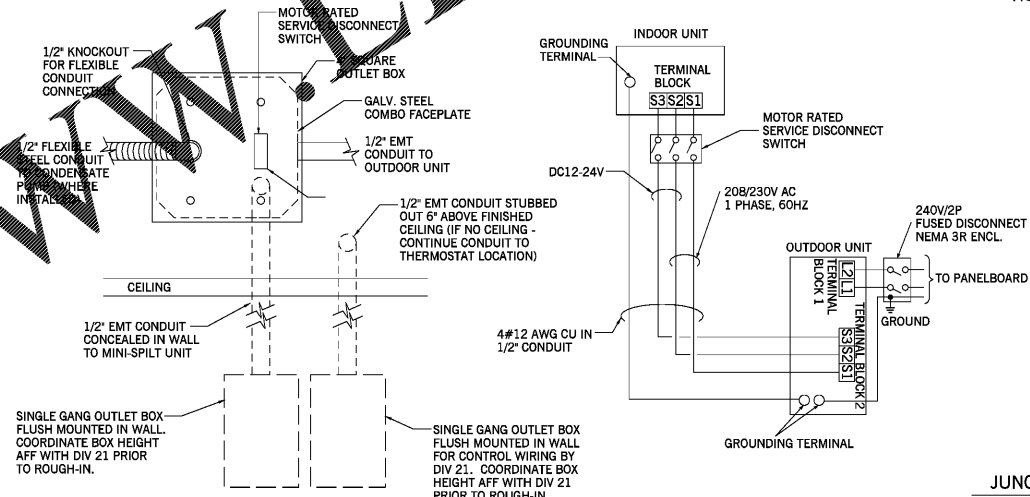


- MECHANICAL EQ. CONN. SCHED NOTES:  
 1. PROVIDE CONDUIT FOR CONTROL WIRING AS SHOWN ON DETAIL SHEET.  
 2. COORDINATE HEIGHT OF JUNCTION BOX WITH MECHANICAL CONTRACTOR. PROVIDE POWER CONNECTION TO CONDENSATE PUMP (WHERE INSTALLED). REFER TO DETAIL SHEET.  
 3. FOR ALL HVAC EQUIPMENT, PROVIDE MINIMUM OF 1/2" FROM ACCESSIBLE CEILING AND/OR CONTROL PANEL TO UNIT CONNECTION POINT FOR CONTROL WIRING BY OTHERS.  
 4. REFER TO MECHANICAL DRAWINGS FOR EXHAUST FAN INTERLOCK WITH LIGHTS. PROVIDE RELAY AS REQUIRED. COORDINATE WITH MECHANICAL CONTRACTOR.

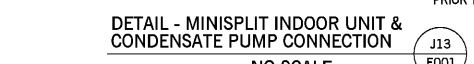
UNIT	DESCRIPTION	VOLTAGE	TYPE DISCONNECT	COMMENTS
CU-E1-E2	REMOTE CONDENSER UNIT	480/3	3Q/3 FUSED DISCONNECT IN NEMA 3R	FUSE PER NAMEPLATE DATA
EF-E1-E4	EXHAUST FAN	120/1	MOTOR RATED SWITCH	NOTE 4
EH-E1-E5	ELECTRIC HEATER	277/1	PROVIDED WITH UNIT	
ERU-E1	ENERGY RECOVERY UNIT	480/3	6Q/3 FUSED DISCONNECT IN NEMA 3R	FUSE PER NAMEPLATE DATA
GF-E1-E2	GAS FIRED FURNACE	120/1	MOTOR RATED SWITCH	
MAHU-E1-E3	MINI-SPLIT AIR-HANDLER (INDOOR)	208/1	3 POLE MOTOR RATED SWITCH LOCATED ABOVE CEILING	CONTROL CONDUIT BY DIV 26 CONTRACTOR NOTE 2
MHP-E1-E3	MINI-SPLIT HEAT PUMP (OUTDOOR)	208/1	3Q/2 FUSED DISCONNECT IN NEMA 3R	CONTROL CONDUIT BY DIV 26 CONTRACTOR REFER TO DETAIL
PMU-E1-E2	PAD MOUNT UNIT	480/3	10Q/3 FUSED DISCONNECT IN NEMA 3R	FUSE PER NAMEPLATE DATA



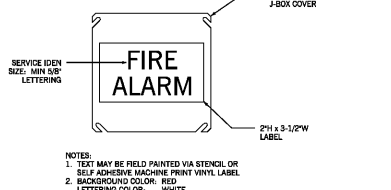
DETAIL - EXTERIOR RECEPTACLE INSTALLATION @ EXISTING WALL CONSTRUCTION (F19 E001) NO SCALE



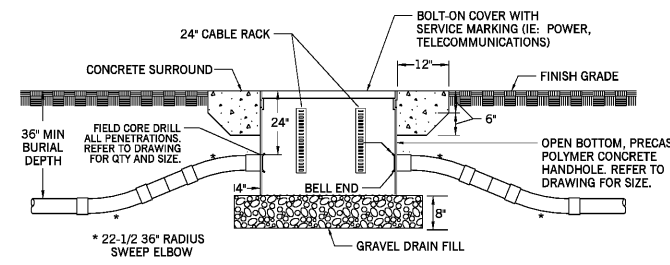
SCHEMATIC - MINISPLIT WIRING (J17 E001) NO SCALE



DETAIL - MINISPLIT INDOOR UNIT & CONDENSATE PUMP CONNECTION (J13 E001) NO SCALE



JUNCTION BOX COVER - FIRE ALARM SYSTEM (J20 E001) NOT TO SCALE



DETAIL - HANDHOLE INSTALLATION (M15 E001) NOT TO SCALE

480Y/277V 3-Phase 4-Wire POWER PANEL Name: HE2

Mains: 225A Main In-cased case breaker  
 Trip: Surface Door: Yes  
 Branch OCP: In-cased case breaker  
 Neutral: S/N  
 Ground bar: Yes

Min Sym IC: 18000  
 Fed from: MSU  
 Feeder: Nema 3

CIR DESCRIPTION	TRIP	POLES	PHASE LOADS			CONDUITS	PHASES	NEUTRAL	GROUND	WIRE TYPE
			A	B	C					
1 PM-E1	100	3	21672	21672	21671	1"	3W3	-	#8	THW Copper
2 PM-E2	100	3	21672	21672	21671	1"	3W3	-	#8	THW Copper
3 Space only	100	3	---	---	---	---	---	---	---	---
4 Space only	100	3	---	---	---	---	---	---	---	---
5 Space only	100	3	---	---	---	---	---	---	---	---
6 Space only	100	3	---	---	---	---	---	---	---	---
Phase Load Totals			43944	43944	43942					

Notes for HE2:  
 1. THIS PANEL AND ALL BREAKERS ARE NEW.  
 2. THIS PANEL SHALL BE NEMA 3R RATED ENCLOSURE.  
 3. Feeder is (1) 3" - 48kV/2 - 4# 3RD XHH Copper  
 4. Terminal Ratings: All 75C

PANEL SCHEDULES THIS SHEET:

HE2

NOTE:  
 ON PANELBOARD DIRECTORIES, CONTRACTOR SHALL ADD SUFFICIENT TEXT TO EACH CIRCUIT DESCRIPTION SO AS TO DIFFERENTIATE EACH CIRCUIT FROM ALL OTHERS, IN COMPLIANCE WITH 2017 NEC ARTICLE 408

**Southern A&E** ARCHITECTS & ENGINEERS  
 7951 Troon Circle  
 Austell, Ga. 30168  
 (770) 819-7777  
 DATE: December 10 2019  
 JOB NUMBER: 01 610 296

HVAC RENOVATIONS FOR:  
**ARNALL MIDDLE SCHOOL GYMNASIUM**  
 COWETA COUNTY SCHOOL SYSTEM  
 NEWNAN, GEORGIA

STATE OF GEORGIA  
 GREGORY SCHULTE  
 REGISTERED ARCHITECT

STATE OF GEORGIA  
 GREGORY SCHULTE  
 REGISTERED PROFESSIONAL ENGINEER  
 No. 47877  
 W. K. E. CAMPO, JR.  
 REGISTERED ARCHITECT

DRAWING NUMBER  
**E001**

Order Plans @