

GENERAL CONSTRUCTION NOTES:

THESE DRAWINGS ARE SCHEMATIC IN NATURE AND NOT INTENDED TO SHOW ALL POSSIBLE CONDITIONS. THE CONTRACTOR SHALL COORDINATE WITH THE RESPECTIVE DISCIPLINES TO VERIFY ALL DIMENSIONS AND METHODS OF CONSTRUCTION.

ALL DUCTWORK SHALL BE FABRICATED AND ERECTED PER SMACNA STANDARDS. SEE SPECIFICATION FOR PRESSURE CLASS.
ALL DUCT SIZES SHOWN ARE NET FREE AREA. WHERE INTERNAL LINER IS INDICATED THE DUCT SIZE SHALL BE INCREASED TO COMPENSATE FOR THE LINER.

ALL SQUARE TO ROUND DUCT TRANSITIONS SHALL BE SMOOTH SQUARE TO ROUND TRANSITIONS.

PORTIONS OF DUCTWORK VISIBLE THROUGH GRILLES AND REGISTERS IN FINISHED AREAS SHALL BE PAINTED FLAT BLACK.

REFER TO ARCHITECTURAL REFLECTED CEILING PLAN FOR EXACT LOCATION OF ALL CEILING MOUNTED AIR DISTRIBUTION DEVICES. IF A DEVICE IS NOT SHOWN ON THE REFLECTED CEILING PLAN, A SHOP DRAWING SHALL BE SUBMITTED FOR ARCHITECTS/ENGINEERS' APPROVAL.

THE CONTRACTOR SHALL COORDINATE ALL FLOOR AND SLAB PENETRATIONS WITH THE ARCHITECT. TRANSITION ALL DUCTWORK ON THE BOTTOM AND SIDES UNLESS OTHERWISE INDICATED. MAINTAIN DUCTWORK HIGH AS POSSIBLE.

COORDINATE VOLTAGE AND PHASE OF EACH PIECE OF MECHANICAL EQUIPMENT WITH DIVISION 26 CONTRACTOR PRIOR TO SUBMITTING AND/OR PURCHASING THE EQUIPMENT. NO ALLOWANCES WILL BE MADE FOR EQUIPMENT DELIVERED TO THE JOB SITE WITH THE WRONG ELECTRICAL CHARACTERISTICS.

ALL REFRIGERANT PIPING SHALL BE SIZED BY THE EQUIPMENT MANUFACTURER BASED ON LENGTH OF RUN AND AMOUNT OF CHARGE REQUIRED TO PROVIDE CAPACITIES SCHEDULED.

AT ALL DUCT MOUNTED ELECTRIC RESISTANCE AND/OR FUEL BURNING HEATERS WHERE INTERNAL DUCT LINER IS SHOWN, THE LINING SHALL BE INTERRUPTED FOR A MINIMUM OF 8 INCHES UPSTREAM AND 6 INCHES DOWNSTREAM OF THESE DEVICES. WHERE DUCT LINER HAS BEEN INTERRUPTED, WRAP WITH BLANKET TYPE DUCT INSULATION AND IN CONFORMANCE WITH SPECIFICATION SECTION 230713.

SEAL ALL DUCT PENETRATIONS OF SMOKE RESISTIVE ASSEMBLIES.

LOCATE ALL THERMOSTATS, INTERVAL TIMERS, NIGHT SETBACKS, WALL SWITCHES, SENSORS, AND ANY OTHER HVAC CONTROL DEVICES SUCH THAT THEY DO NOT INTERFERE WITH CHALKBOARDS, TACKBOARDS, TEACHER'S CABINETS, DOORSWINGS, MILLWORK, ETC.

CONTRACTOR SHALL FIELD VERIFY ALL EXISTING CONDITIONS PRIOR TO BEGINNING WORK. REPORT ANY CONFLICTS OR DISCREPANCIES TO THE ARCHITECT FOR REVIEW. WHERE PIPES, CONTROL DEVICES AND WIRING ARE DISCONNECTED FOR THE REMOVAL OR RELOCATION OF EQUIPMENT, OR BECAUSE OF BUILDING ALTERATIONS, THEY SHALL BE RECONNECTED AND MADE OPERATIONAL.

UNLESS OTHERWISE NOTED, ALL MATERIALS AND EQUIPMENT SHOWN OR SPECIFIED TO BE REMOVED SHALL BE SURVEYED BY THE OWNER, THE OWNER OR OWNER'S REPRESENTATIVE SHALL DETERMINE WHICH EQUIPMENT SHALL REMAIN PROPERTY OF THE OWNER. RETAINED EQUIPMENT SHALL BE STORED BY THE CONTRACTOR AT THE OWNER'S DIRECTIVE. ALL OTHER EQUIPMENT AND MATERIALS DESIGNATED TO BE REMOVED SHALL BE DISPOSED OF BY THE CONTRACTOR.

CONTRACTOR SHALL DO ANY AND ALL CUTTING AND PATCHING REQUIRED FOR THE SCOPE OF THIS WORK, RESTORING ALL SURFACES TO THEIR ORIGINAL, ADJACENT CONDITIONS AND IN COMPLIANCE WITH CUTTING AND PATCHING SPECIFICATIONS. ALTERATIONS TO ANY STRUCTURAL MEMBER, EITHER WOOD, STEEL OR CONCRETE, SHALL REQUIRE THE APPROVAL OF THE ARCHITECT.

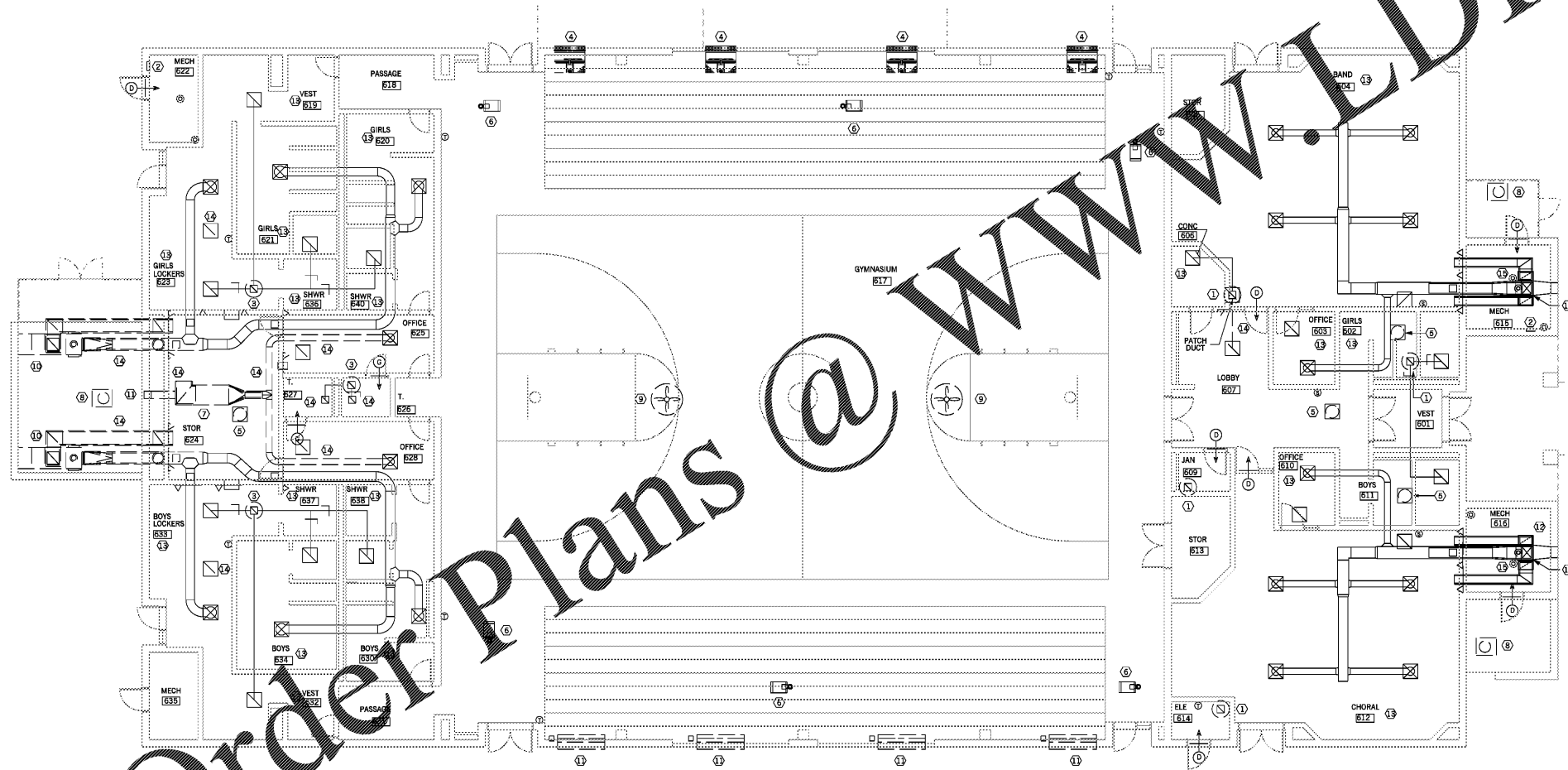
CONTRACTOR SHALL REMOVE ALL SUPPORTING ITEMS NO LONGER NEEDED OR MADE OBSOLETE BY THE NEW EQUIPMENT AND MATERIALS FURNISHED UNDER THIS CONTRACT. SUCH REMOVAL INCLUDES, BUT IS NOT LIMITED TO, EXPOSED CONDUIT RUNS WITH WIRING AND SUPPORT BRACKETS, ABANDONED PIPING, SUPPORT FRAMES OR BASES, SWITCHES AND CONTROLS. COORDINATE WITH ELECTRICAL DEMOLITION DRAWINGS WHERE APPLICABLE.

CLEAN EXISTING DIFFUSERS, REGISTERS AND GRILLES CONNECTED TO AIR SYSTEMS THAT ARE MODIFIED OR REPLACED. ALL DAMPERS OF SUCH SYSTEMS SHALL BE REPAIRED OR REPLACED. ALL EXISTING DUCTWORK IN SUCH SYSTEMS SHALL BE CLEANED AND SHALL BE SEALED AS REQUIRED TO BALANCE THE SYSTEM TO THE AIR QUANTITIES SHOWN ON THE FLOOR PLANS.

INSPECT AND REPLACE DEFECTIVE EXISTING FIRE DAMPER FUSIBLE LINKS.

UNLESS OTHERWISE NOTED, CONTRACTOR SHALL RECOVER REFRIGERANT FROM EXISTING HVAC EQUIPMENT, STORE IN APPROVED REFRIGERANT RECOVERY CYLINDERS, AND TURN OVER TO OWNER.

HVAC LEGEND			
SYM.	DESCRIPTION	SYM.	DESCRIPTION
A/100	AIR DISTRIBUTION MARK / CFM	MAHU	MINI-SPLIT AIR HANDLING UNIT
AC	AIR CONDITIONER	MAU	MAKE-UP AIR UNIT
AD	ACCESS DOOR	MEP	MECHANICAL EQUIP. PAD - RE-ARCH.
AFF	ABOVE FINISHED FLOOR	MHP	MINI-SPLIT HEAT PUMP
AHP	AIR HANDLING HEAT PUMP UNIT	MOP	MOTOR OPERATED DAMPER
AHU	AIR HANDLING UNIT	MVD	MANUAL VOLUME DAMPER
B	BOILER	OA	OUTSIDE AIR
BMC	BUILDING MANAGEMENT CONTROLLER	P	PUMP
BPD	BYPASS DAMPER	PIU	POWERED INDUCTION UNIT
CFM	CUBIC FEET PER MINUTE	PMHP	PAD MOUNTED HEAT PUMP UNIT
CH	CHILLER	PMU	PAD MOUNTED UNIT
CR	CONDENSER WATER RETURN	RA	RETURN AIR
CS	CONDENSER WATER SUPPLY	RTHP	ROOFTOP HEAT PUMP UNIT
CT	COOLING TOWER	RTU	ROOF TOP UNIT
CU	CONDENSING UNIT	SA	SUPPLY AIR
CWR	CHILLED WATER RETURN	SD	SMOKE DAMPER
CWS	CHILLED WATER SUPPLY	SZ/D	COMBO SMOKE / FIRE DAMPER
D	DRAIN	So.o	OUTDOOR AIR SENSOR - ENTHALPY
DCS	DUST COLLECTION SYSTEM	S.P.	STATIC PRESSURE
DF	DUCT FURNACE	TWHP	THROUGH THE WALL HEAT PUMP UNIT
DG	DOOR GRILLE	VAV	VARIABLE AIR VALVE
DN	DOWN	VVJ	VARIABLE VOL. / VARIABLE TEMP. VALVE
EDH	ELECTRIC DUCT HEATER	WHP	WALL HUNG HEAT PUMP UNIT
EF	EXHAUST FAN	CS	CARBON DIOXIDE SENSOR
EH	ELECTRIC HEATER	DM	DUCT MOUNTED SMOKE DETECTOR
ERV	ENERGY RECOVERY VENTILATOR	H	HUMIDISTAT
EUH	ELECTRIC UNIT HEATER	I	INTERVAL TIMER
FD	FIRE DAMPER	N	NIGHT SETBACK
FDDG	FUSIBLE LINK DOOR GRILLE	R	ROOM SENSOR
GF	GAS FURNACE UNIT	W	WALL MOUNTED SWITCH
GH	GRAVITY INTAKE HOOD	W	WALL HUNG HEAT PUMP UNIT
GRH	GRAVITY RELIEF HOOD	W	WALL HUNG HEAT PUMP UNIT
GWL	GAS WALL HUNG UNIT	W	WALL HUNG HEAT PUMP UNIT
GUH	GAS UNIT HEATER	W	WALL HUNG HEAT PUMP UNIT
HP	HEAT PUMP	W	WALL HUNG HEAT PUMP UNIT
HRF	HEAT RECOVERY FAN	W	WALL HUNG HEAT PUMP UNIT
HVS	HOODED VENTILATION SYSTEM	W	WALL HUNG HEAT PUMP UNIT
HWR	HEATING WATER RETURN	W	WALL HUNG HEAT PUMP UNIT
HWS	HEATING WATER SUPPLY	W	WALL HUNG HEAT PUMP UNIT
L/D	COMBO LOUVER / DAMPER	W	WALL HUNG HEAT PUMP UNIT



DEMOLITION NOTES - THIS SHEET ONLY

- REMOVE EXISTING ROOF MOUNTED EXHAUST FAN AND ASSOCIATED CONTROLS AND ACCESSORIES. PREPARE EXISTING ROOF CURB FOR INSTALLATION OF NEW EXHAUST FAN.
- REMOVE EXISTING WALL HEATER AND ACCESSORIES. PREPARE WALL FOR INSTALLATION OF NEW WALL HEATER.
- REMOVE EXISTING ROOF MOUNTED EXHAUST FAN AND ASSOCIATED CONTROLS AND ACCESSORIES. CALL EXISTING ROOF CURB WITH INSULATED CURB CAP AND SEAL WEATHER TIGHT.
- REMOVE EXISTING WALL PROP FAN AND ASSOCIATED CONTROLS. SEE RENO PLAN FOR REUSE OF WALL OPENING FOR DUCT ROUTING. IF WALL OPENING IS NOT SHOWN TO BE REUSED, THEN EXTERIOR WALL SHUTTERS SHALL REMAIN AND SHALL BE SECURED CLOSED AND SEALED WEATHER TIGHT. SEE ARCHITECTURAL DOCUMENTS FOR PATCHING OF WALL ON THE INTERIOR.
- REMOVE EXISTING CEILING HEATER AND ASSOCIATED CONTROLS AND ACCESSORIES.
- REMOVE EXISTING GAS UNIT HEATER AND ASSOCIATED CONTROLS AND ACCESSORIES. EXISTING FLUE TO BE SECURED IN PLACE AND CALK AROUND PERIMETER AT ROOF PENETRATION. CAP FLUE 12" BELOW ROOF DECK AND FILL FLUE WITH SPRAY FOAM INSULATION.
- REMOVE EXISTING ABOVE CEILING SPLIT SYSTEM AIR HANDLER AND ASSOCIATED DUCTWORK, CONTROLS, AND ACCESSORIES.
- REMOVE EXISTING SPLIT SYSTEM OUTDOOR UNIT AND ASSOCIATED CONTROLS AND ACCESSORIES.
- EXISTING HEAT RECOVER FANS TO REMAIN. REMOVE EXISTING CONTROLS. REFER TO SPECIFICATIONS 23 09 93 FOR NEW CONTROLS AND SEQUENCING.
- REMOVE EXISTING GAS FIRED MAKE UP AIR UNIT AND ALL ASSOCIATED CONTROLS AND ACCESSORIES. REMOVE EXISTING EXTERIOR SUPPLY AND RETURN DUCTWORK.
- EXISTING LOUVER TO REMAIN. DISCONNECT EXISTING CONTROLS AND REMOVE DAMPER ACTUATOR. CLOSE AND SECURE LOUVER DAMPER SHUT. SEE ARCHITECTURAL DOCUMENTS FOR ADDITIONAL PATCHING REQUIREMENTS.
- REMOVE EXISTING GAS FURNACE AND ASSOCIATED EVAPORATOR COIL BOX, CONTROLS, AND ACCESSORIES. ASSOCIATED DUCTWORK SHALL REMAIN. CUT AND PATCH EXTERIOR WALL PENETRATIONS PER ARCHITECTURAL DOCUMENTS.
- REMOVE EXISTING SPLIT SYSTEM AIR HANDLER AND ASSOCIATED CONTROLS AND ACCESSORIES. ASSOCIATED DUCTWORK SHALL REMAIN. CUT AND PATCH EXTERIOR WALL PENETRATIONS PER ARCHITECTURAL DOCUMENTS.
- REMOVE DUCTWORK AND AIR DISTRIBUTION DEVICES. ASSOCIATED SUPPORTS AND ACCESSORIES SHOWN USING DASHED LINES. PATCH EXTERIOR WALL PENETRATIONS PER ARCHITECTURAL DOCUMENTS.
- EXISTING TYPE B FLUE VENT TO BE SECURED IN PLACE AND CALK AROUND PERIMETER AT ROOF PENETRATION. CAP FLUE 12" BELOW ROOF DECK AND FILL FLUE WITH SPRAY FOAM INSULATION. EXISTING TYPE B FLUE VENT CANNOT BE USED WITH NEW HIGH EFFICIENCY GAS FURNACE SHOWN ON RENOVATION PLANS. AT CONTRACTORS OPTION, ROOF PENETRATION MAY BE USED FOR ROUTING NEW CONCENTRIC VENTING KIT TO OUTSIDE IN LIEU OF WALL PENETRATION CALLED OUT FOR IN RENOVATION PLANS.

Order Plans @

WWW.DILine.com

HVAC DEMO. PLAN - GYMNASIUM 1 NO SCALE M101

Southern A&E ARCHITECTS & ENGINEERS
 7951 Iron Circle
 Austell, Ga. 30168
 (770) 813-7777
 REVISED December 20 2019
 DATE December 10 2019
 JOB NUMBER 01 610 296

HVAC RENOVATIONS FOR:
ARNALL MIDDLE SCHOOL GYMNASIUM
 COWETA COUNTY SCHOOL SYSTEM
 NEWNAN, GEORGIA

STATE OF GEORGIA REGISTERED ARCHITECT
 GREGORY SCHULTE
 STATE OF GEORGIA REGISTERED ENGINEER
 MICHAEL C. WALDRON

DRAWING NUMBER
M101