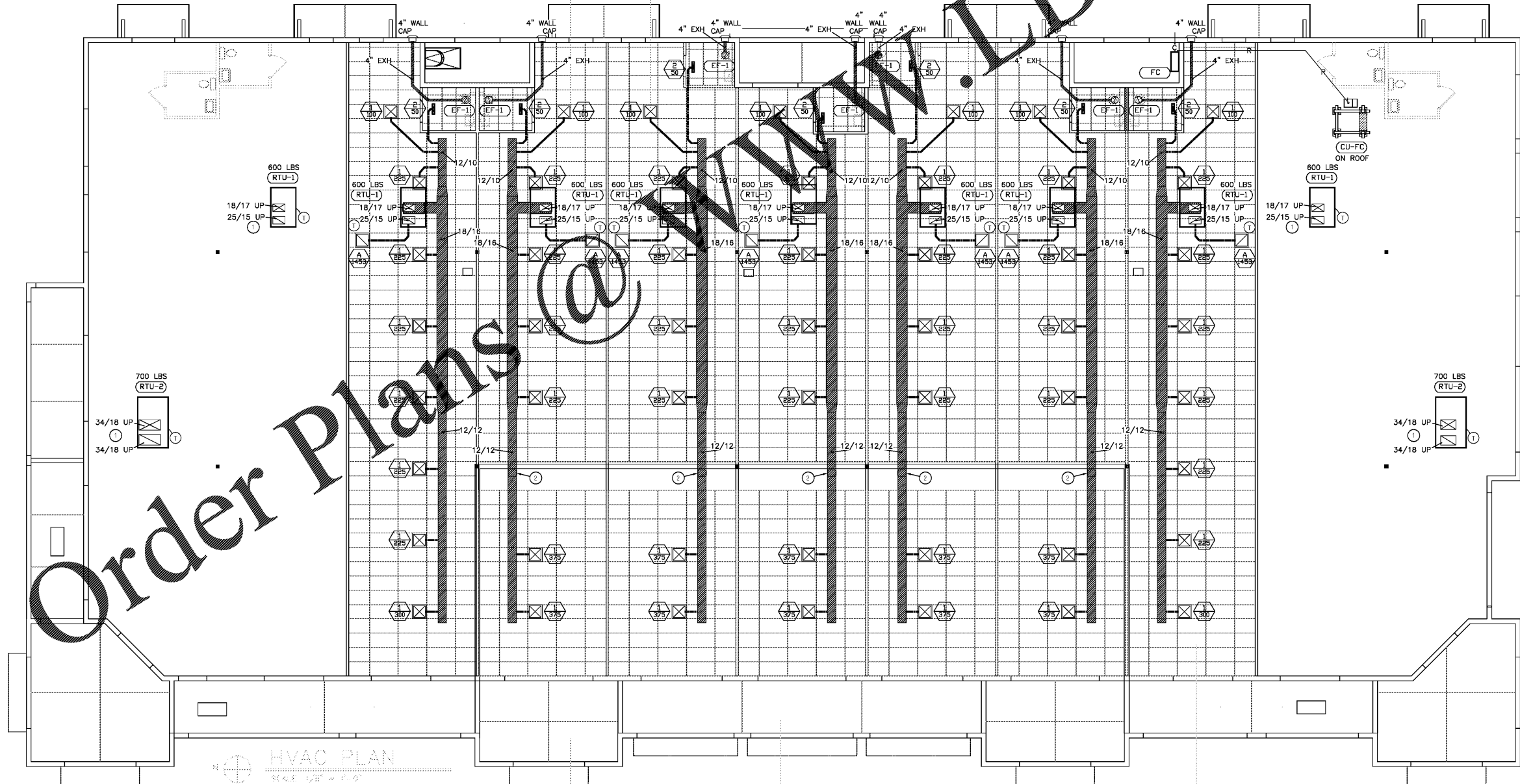


H.V.A.C. SYMBOLS AND LEGEND	
SYMBOL	DESCRIPTION
EF-1	EQUIPMENT DESIGNATION (EF: EXHAUST FAN, AHU: AIR HANDLING UNIT, CU: CONDENSING UNIT)
[Symbol]	LOUVER/SIDEWALL RETURN
[Symbol]	SIDEWALL OUTLET, WALL CAP
[Symbol]	SUPPLY OUTLET
[Symbol]	OUTLET NUMBER AIR QUANTITY (CFM)
[Symbol]	RETURN/EXHAUST INLET
[Symbol]	INLET DESIGNATION AIR QUANTITY (CFM)
[Symbol]	EXHAUST FAN (IN OR ABOVE CEILING)
[Symbol]	SUPPLY DUCTWORK NET INSIDE DIMENSION (WIDTH/DEPTH)
[Symbol]	RETURN DUCTWORK NET INSIDE DIMENSION (WIDTH/DEPTH)
[Symbol]	EXHAUST DUCTWORK NET INSIDE DIMENSION (WIDTH/DEPTH)
[Symbol]	FLEXIBLE DUCTWORK / NET INSIDE DIMENSION (DIAMETER)
[Symbol]	BRANCH TAKE-OFF WITH 45 DEGREE MITER CORNER ON UPSTREAM SIDE. MINIMUM 1/2 BRANCH DUCT WIDTH.
[Symbol]	TAKE-OFF OR TEE FITTING WITH 24 GAUGE GALVANIZED SHEET METAL SPLITTER DAMPER. PROVIDE WITH HINGE AND LOCKING OPERATING ROD.
[Symbol]	TRANSITION IN DUCT. TRANSITION LENGTH (L) TO BE 1 1/2 TIMES THE MAXIMUM UPSTREAM DUCT DIMENSION.
[Symbol]	THREE PIECE ELBOW (90 DEGREE TURN), WITH THROAT DIMENSION MINIMUM 1/2 DUCT WIDTH.
[Symbol]	FIRE DAMPER EQUAL TO GREENHECK MODEL DFD-150, 1-1/2 HR. UL LABELED, TYPE B, WITH 165° FUSIBLE LINK.
⊙	THERMOSTAT-MOUNT AT 48 INCHES A.F.F. UNLESS OTHERWISE STATED
C	CONDENSATE DRAIN PIPING
R	REFRIGERANT LINE PIPING, ABOVE GROUND

FLEX DUCT SIZING SCHEDULE	
000 - 049 CFM - 4"	351 - 600 CFM - 12"
050 - 100 CFM - 6"	601 - 900 CFM - 14"
101 - 200 CFM - 8"	901 - 1299 CFM - 16"
201 - 350 CFM - 10"	1300 - 1800 CFM - 18"

- HVAC PLAN NOTES:
- STUB SUPPLY AND RETURN DUCTS BELOW ROOF FOR FUTURE DUCTING. MOUNT THERMOSTAT ON DUCT WITH 50' OF COILED THERMOSTAT WIRE FOR FUTURE REMOTE MOUNTING.
  - SUPPLY DUCT UP HERE TO ABOVE HIGH CEILING.



HVAC PLAN  
SCALE: 1/8" = 1'-0"

AA 0003662

380 10th St. S., Ste 103  
Naples, Florida 34102

PH: (239) 261-6949  
FAX: (239) 261-6153

Consultant:

KVA TRON ENGINEERING, INC. MECHANICAL DESIGN SERVICES	
2024 DUAL PERM BY: GFCI, FLORIDA, 2006, 1200 340-7847	
DRAWN BY: BSA	APPROVED BY: BSA
SCALE: 1/8" = 1'-0"	DATE: 3/28/19
	JOB NUMBER: 3488
	REFERENCE: M1

Project:

NEW SHOPPING CENTER FOR:  
SANDBANKS LLC  
REDEVELOPMENT  
U.S. 41, NAPLES, FL

SDP SUBMISSION

© 2018  
GESHAY ASSOCIATES, INC. EXPRESSLY RESERVES ITS COPYRIGHT AND OTHER PROPERTY RIGHTS FOR THESE DRAWINGS AND DESIGN(S), INCLUDING THEIR ORIGINAL PURPOSE AND SITE. THESE DRAWINGS MAY NOT BE REPRODUCED, CHANGED, REUSED OR COPIED WITHOUT WRITTEN CONSENT OF GESHAY ASSOCIATES, INC. ANY ASSIGNMENT TO ANOTHER PARTY IS UNINTENDED AND PROHIBITED.

Indicator	Date	Remarks/Revisions

Sign & Seal

Drawn by: MG  
Checked by: JG  
Date: 10/23/18  
Project No: GA1700.15

**M1**

Sheet No.