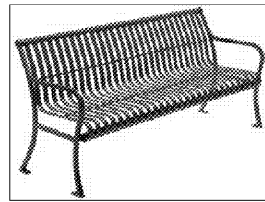




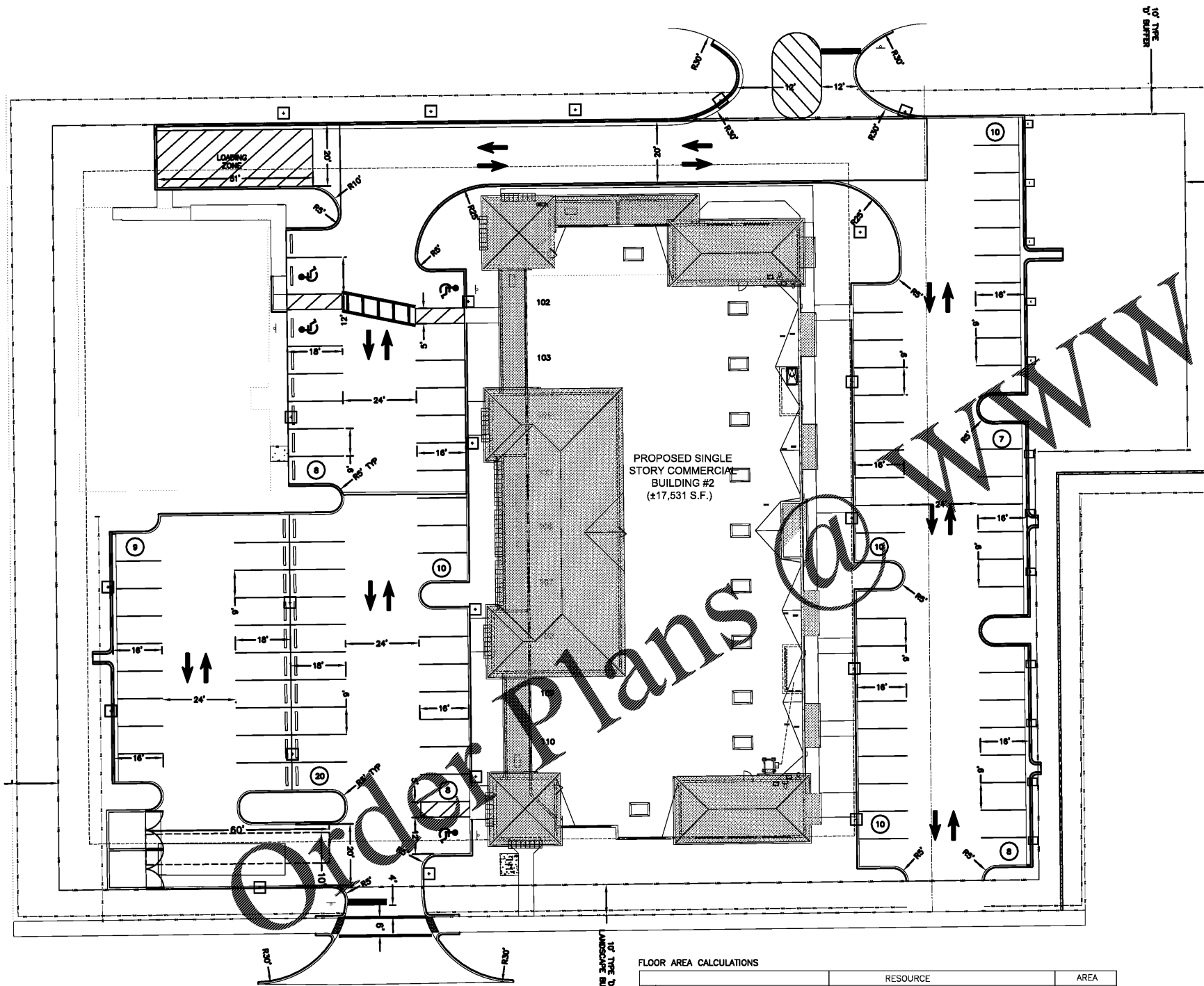
"MIDTOWN" LITTER RECEPTACLE (32 GAL.) AS MANUFACTURED BY KEYSTONE RIDGE DESIGNS. PRODUCT # MT3-32 W/ ELEVATED LID # E AND ADJUSTABLE LEG OPTION; COLOR: BLACK; PROVIDE (4) (SEE ARCHITECTURAL SITE PLAN FOR LOCATIONS)



"PULLMAN" 8' BENCH AS MANUFACTURED BY KEYSTONE RIDGE DESIGNS. PRODUCT # P28; COLOR: BLACK; PROVIDE (2) (SEE ARCHITECTURAL SITE PLAN FOR LOCATIONS)

1 EXTERIOR FURNISHINGS

NOT TO SCALE



PROPOSED SINGLE STORY COMMERCIAL BUILDING #2 (±17,531 S.F.)

ARCHITECTURAL SITE PLAN

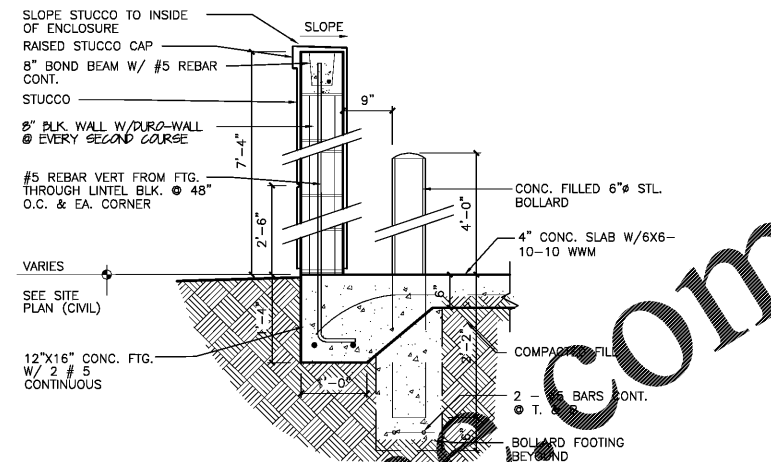
SCALE: 1" = 20'

NOTE: SEE CIVIL DRAWINGS FOR ALL SITE UTILITIES

FLOOR AREA CALCULATIONS

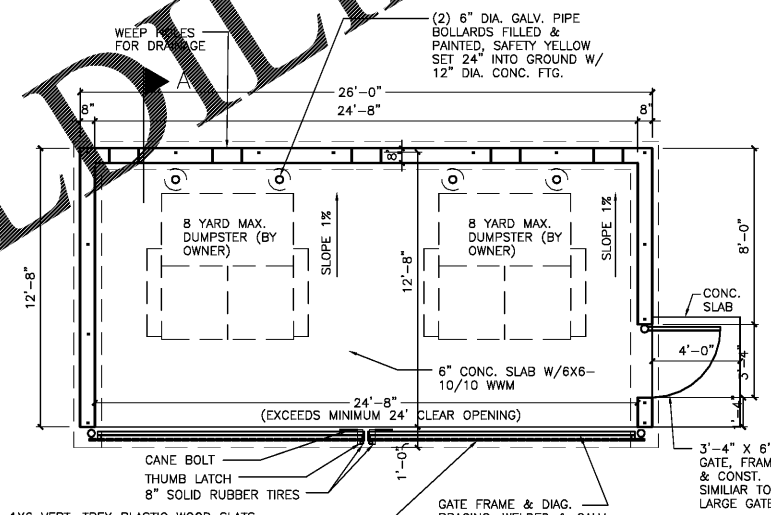
	RESOURCE	AREA
a FLOOR AREA, LDC	SEC 1.08.02 DEFINITIONS	17,531. SF.
b FLOOR AREA, LDC, PARKING ONLY	SEC 4.05.04B.1, PARKING SPACE REQUIREMENTS	17,366. SF
c FLOOR AREA, BUILDING, FBC	DEFINITIONS, SEC. 502	20,072. SF
d FLOOR AREA SQUARE FOOTAGE	IMPACT FEES, CODE OF LAWS, SEC. 74-108	17,755. SF

NOTE: "USE" IS RETAIL/ OR SHOPPING CENTER. OCCUPANCY CLASSIFICATION IS MERCANTILE (RETAIL/ OFFICES).



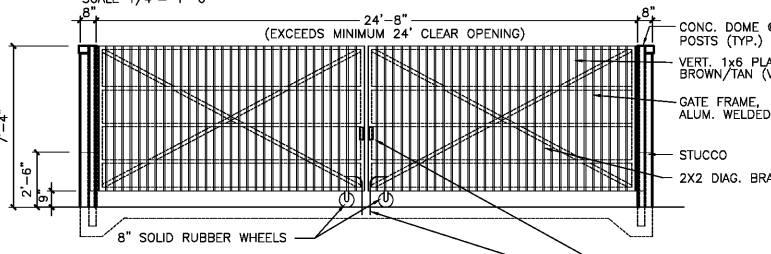
SECTION A

SCALE 3/4" = 1'-0"



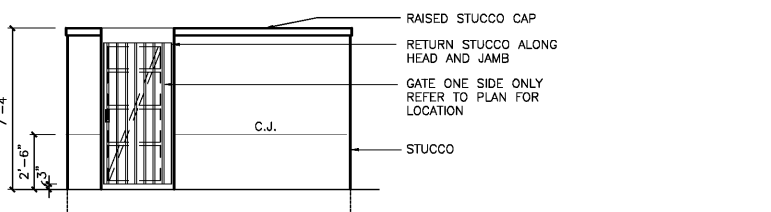
PLAN

SCALE 1/4" = 1'-0"



FRONT ELEVATION

SCALE 1/4" = 1'-0"



SIDE ELEVATION (AT GATE)

SCALE 1/4" = 1'-0"

2 DUMPSTER ENCLOSURE DETAIL

SCALE: 1/4" = 1'-0"

AA 0003662

380 10th St. S., Ste 103
Naples, Florida 34102

PH: (239) 261-6949
FAX: (239) 261-6153

Consultant:

Project:

NEW SHOPPING CENTER FOR:
SANDBANKS LLC
REDEVELOPMENT
U.S. 41, NAPLES, FL

© 2019 GESHAY ASSOCIATES, INC. EXPRESSLY RESERVES ITS COPYRIGHT AND OTHER PROPERTY RIGHTS FOR THESE DRAWINGS AND DESIGN(S). INCLUDING THEIR ORIGINAL PURPOSE AND SITE. THESE DRAWINGS MAY NOT BE REPRODUCED, CHANGED, REUSED OR COPIED WITHOUT WRITTEN CONSENT OF GESHAY ASSOCIATES, INC. ANY ASSIGNMENT TO ANOTHER PARTY IS UNLIMITED AND PROHIBITED.

Indicator	Date	Remarks/Revisions

Sign & Seal

Drawn by: MG
Checked by: JG
Date: 04/04/19
Project No. GA1700.15

A0.1