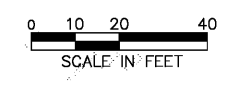
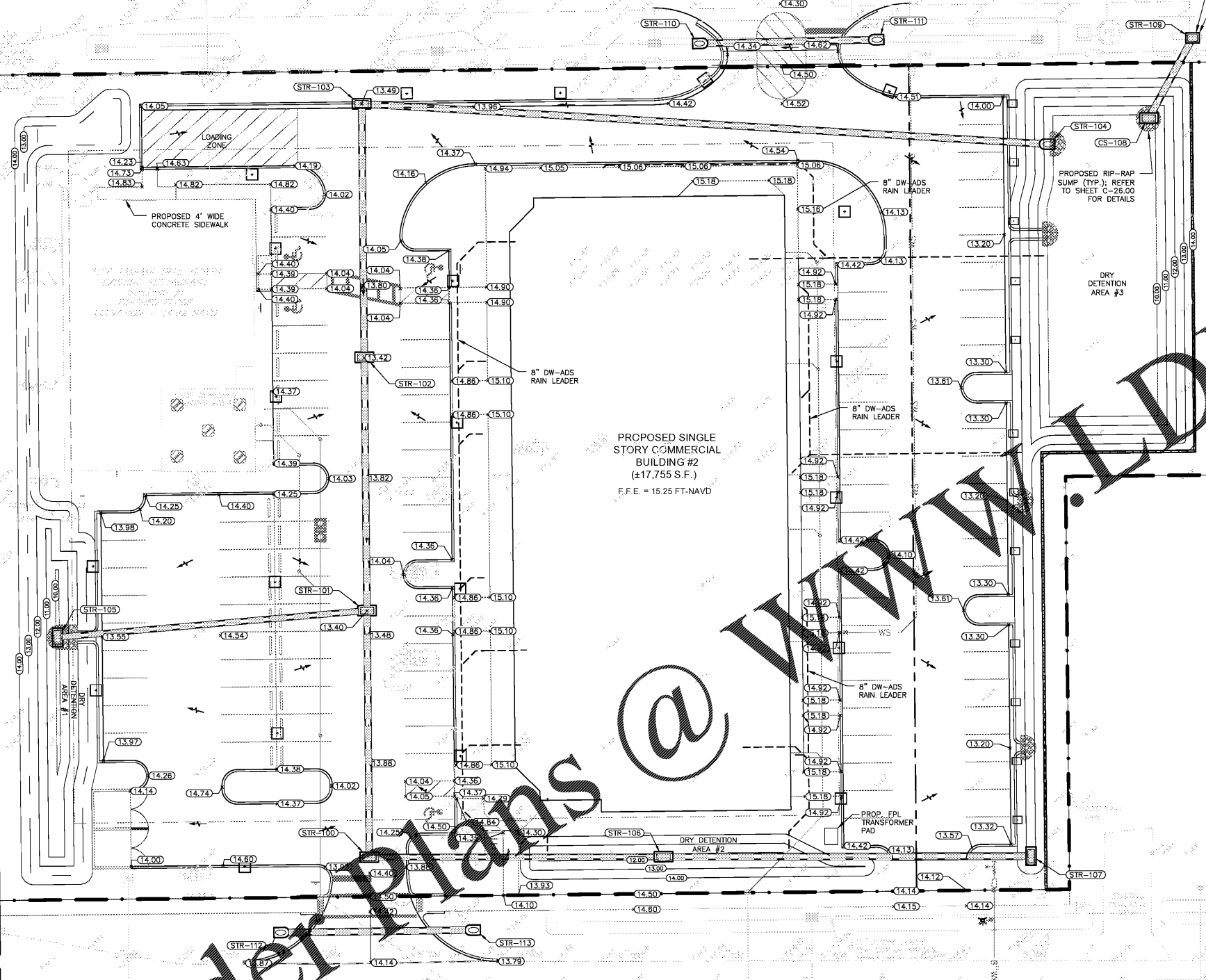


TAMIAMI TRAIL NORTH (US 41/SR 45)
(PUBLIC, 150' ROW)

RIDGE STREET
(PUBLIC, 60' ROW)

ROSEMARY LANE
(PUBLIC, 60' ROW)



WATER QUALITY CALCULATIONS

WATER QUALITY VOL. REQ'D	0.29 AC-FT
WATER QUALITY VOL. PROVIDED	1.86 AC-FT

PEAK DISCHARGE RATE

ALLOWABLE PEAK DISCHARGE	0.21 CFS *
MODELED PEAK DISCHARGE	0.42 CFS **

* ALLOWABLE PEAK DISCHARGE WAS CALCULATED AS (0.09 CFS/ACRE) X (2.32 ACRES).
** MODELED PEAK DISCHARGE REPRESENTS THE DISCHARGE RATE ACHIEVED BY USING A MINIMUM 3" # ORIFICE.

LEGEND

- PROPOSED CONTOURS
- EXISTING ELEVATION
- PROPOSED ELEVATION
- DIRECTION OF DRAINAGE FLOW
- PROPOSED RIP-RAP
- RCP DRAINAGE PIPE
- DRAINAGE INLET
- MITERED END SECTION
- PROPOSED RAIN LEADER

WATER MANAGEMENT SUMMARY

CONTROL ELEVATION	5.23 FT.-NAVD
10 YEAR 1 DAY RAINFALL	6.8 INCHES
25 YEAR 3 DAY RAINFALL	11.4 INCHES
100 YEAR 3 DAY RAINFALL	14.3 INCHES
10 YEAR 1 DAY STORM STAGE	13.15 FT.-NAVD
25 YEAR 3 DAY STORM STAGE	13.88 FT.-NAVD
100 YEAR 3 DAY STORM STAGE	14.91 FT.-NAVD
MINIMUM PARKING LOT ELEVATION	13.15 FT.-NAVD
MINIMUM ROAD CROWN ELEVATION	13.88 FT.-NAVD
MINIMUM FINISH FLOOR ELEVATION	14.92 FT.-NAVD

FLOOD ZONE INFO.

FLOOD ZONE: X
BASE FLOOD ELEVATION = N/A

GENERAL NOTES

- RETENTION/DETENTION AREAS MUST BE STABILIZED WITH SOD UNLESS AN ALTERNATIVE METHOD IS SPECIFICALLY PERMITTED PRIOR TO PLAN APPROVAL. NO ORGANIC MULCH WILL BE PERMITTED IN OR ADJOINING RETENTION/DETENTION AREA. THE PROJECT OWNER IS RESPONSIBLE FOR THE PERPETUAL MAINTENANCE OF ALL FEATURES OF THE SURFACE WATER MANAGEMENT SYSTEM AS OUTLINED ON THE DRAINAGE PLAN.

Structure Name	Structure Details	Pipe Details	To Structure
STR - 100	FDOT TYPE "C" RIM = 14.31	PIPE - (87) 18" RCP (N) 81 FT. LENGTH 0.00%	STR - 101
STR - 101	FDOT TYPE "C" RIM = 13.40	PIPE - (85) 18" RCP (N) 85 FT. LENGTH 0.00%	STR - 102
STR - 102	FDOT TYPE "C" RIM = 13.42	PIPE - (85) 18" RCP (S) 85 FT. LENGTH 0.00%	STR - 101
STR - 103	FDOT F CURB INLET RIM = 13.49	PIPE - (71) 18" RCP (S) 81 FT. LENGTH 0.00%	STR - 102
STR - 104	CONCRETE MES RIM = 12.21	PIPE - (81) 18" RCP (W) 225 FT. LENGTH 0.07%	STR - 103
STR - 105	FDOT TYPE "C" BUBBLE UP RIM = 10.00	PIPE - (74) 15" RCP (E) 102 FT. LENGTH 1.62%	STR - 101
STR - 106	FDOT TYPE "C" RIM = 12.00	PIPE - (76) 18" RCP (E) 119 FT. LENGTH 0.00%	STR - 107
STR - 107	FDOT TYPE "C" RIM = 13.00	PIPE - (76) 18" RCP (W) 119 FT. LENGTH 0.00%	STR - 106
CONTROL STR - 108	FDOT TYPE "C" RIM = 13.88	PIPE - (79) 18" RCP (NE) 30 FT. LENGTH 0.00%	STR - 109
STR - 109	"X" BOX RIM = 12.25	PIPE - (79) 18" RCP (SW) 30 FT. LENGTH 0.00%	STR - 108
STR - 110	CONCRETE MES RIM = 12.21	PIPE - (82) 18" RCP (E) 58 FT. LENGTH 0.00%	STR - 111
STR - 111	CONCRETE MES RIM = 12.21	PIPE - (82) 18" RCP (W) 58 FT. LENGTH 0.00%	STR - 110
STR - 112	CONCRETE MES RIM = 12.21	PIPE - (83) 18" RCP (E) 63 FT. LENGTH 0.00%	STR - 113
STR - 113	CONCRETE MES RIM = 12.21	PIPE - (83) 18" RCP (W) 63 FT. LENGTH 0.00%	STR - 112

REVISIONS

REV.	DATE	DESCRIPTION
1	11/15/2018	FIRST SUBMITTAL TO COLLIER COUNTY

DESIGNED BY: JAW
DRAWN BY: JAW
CHECKED BY: JAW
PROJECT NO.: 17-0086

CLIENT: **SANDBANKS, LLC**
700 OLD TRAIL DRIVE
NAPLES, FL 34103

PROJECT: **SANDBANKS REDEVELOPMENT**
SHEET TITLE: **MASTER DRAINAGE PLAN**

DAVIDSON ENGINEERING
4365 Radio Road, Suite 201
Naples, Florida 34104
P. 239.434.0090 F. 239.434.0094
Company Cert. of Authorization No. 000869

JEFF L. DAVIDSON, P.E. NO. 47161
ANDREW E. RATH, P.E. NO. 73996
RYAN A. WHITE, P.E. NO. 67490
JENNA A. WOODWARD, P.E. NO. 84212

SHEET NO.: **C-21.00**