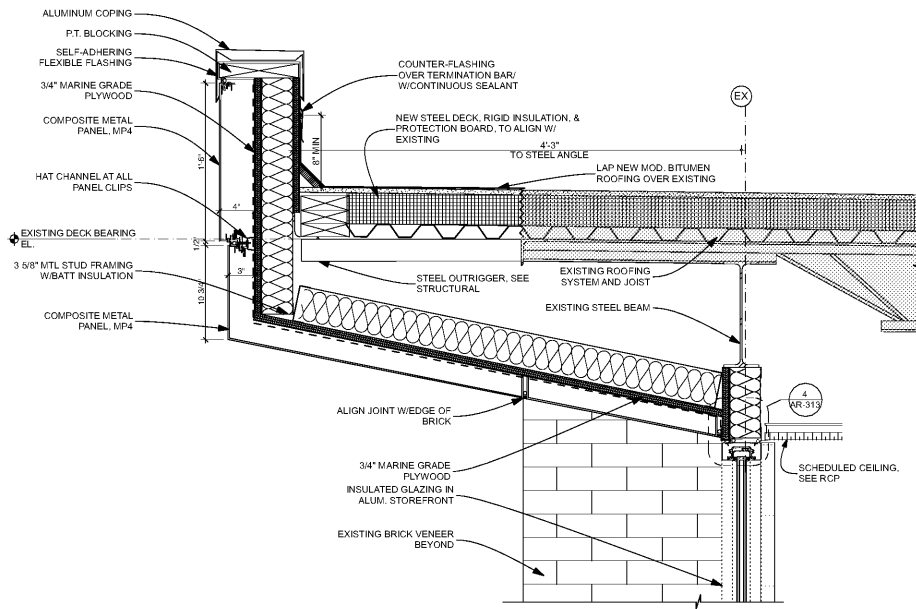
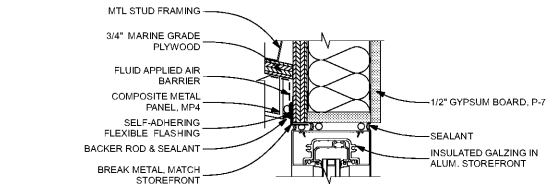


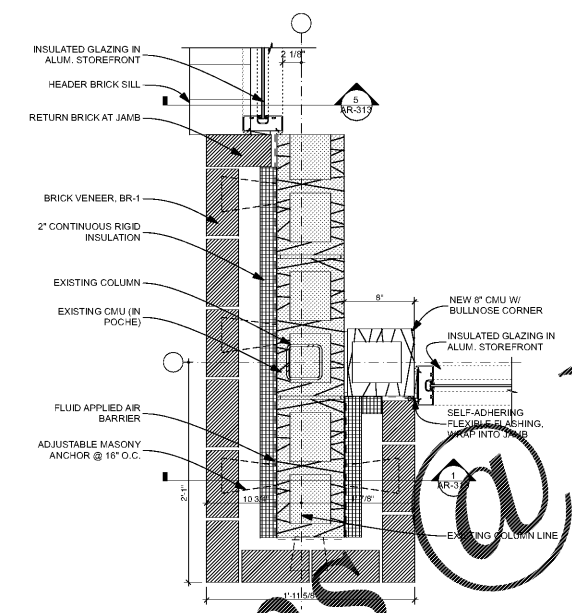
15 SECTION - SEAT WALL
SCALE: 1 1/2" = 1'-0"



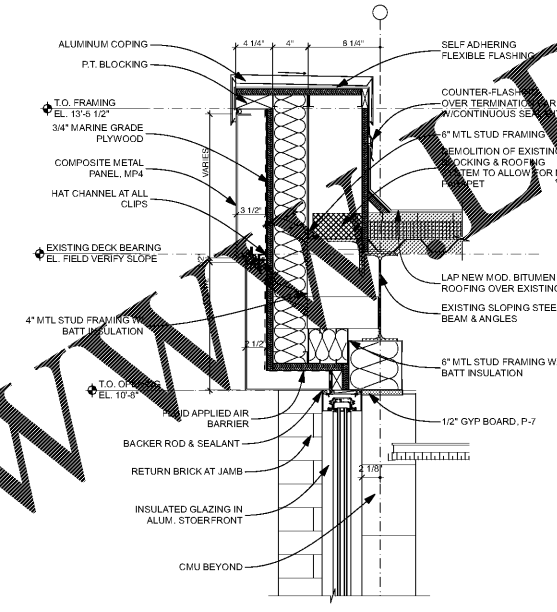
7 SECTION DETAIL - ENTRANCE OVERHANG
SCALE: 1 1/2" = 1'-0"



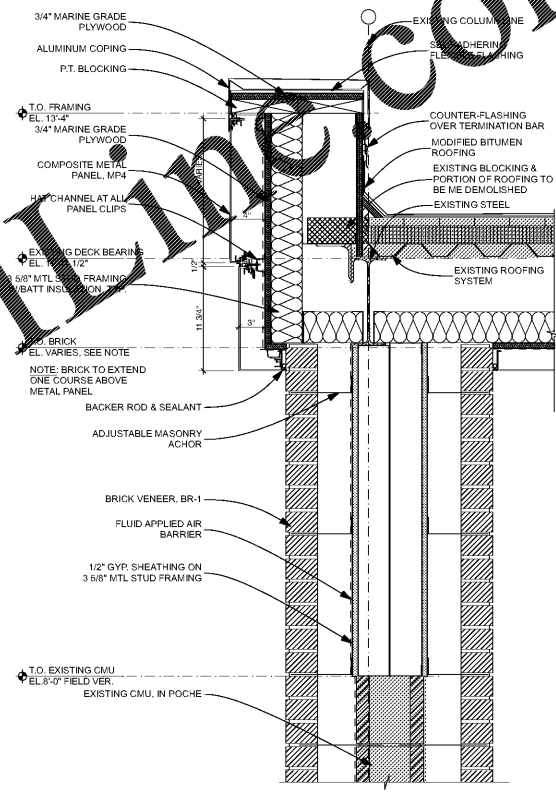
4 DETAIL - WINDOW HEAD
SCALE: 3" = 1'-0"



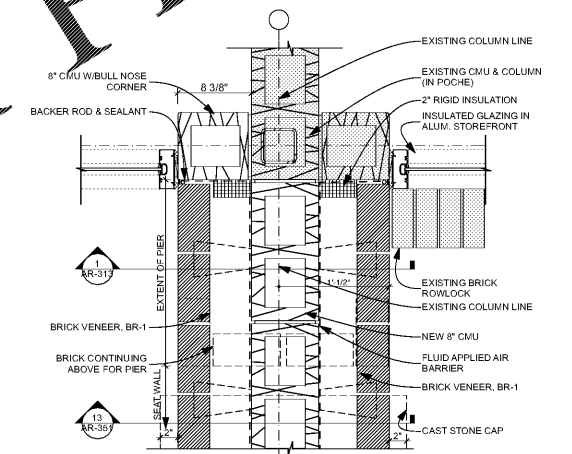
10 PLAN DETAIL - NEW PIER
SCALE: 1/2" = 1'-0"



5 ENLARGED SECTION - SIDE WINDOW
SCALE: 1 1/2" = 1'-0"



1 ENLARGED SECTION - NEW PIER
SCALE: 1 1/2" = 1'-0"



9 PLAN DETAIL - PIER/SEAT WALL
SCALE: 1 1/2" = 1'-0"

Order Plans @ WWW.ArchPlans.com

WWW.ArchPlans.com

COOPER CARUSI COLLINS
ARCHITECTS

3391 Peachtree Rd NE, Suite 400
Atlanta, Georgia 30326
404-873-0001

COBB COUNTY
SCHOOL DISTRICT

CAMPBELL HIGH SCHOOL
PROJECT #B001
ADDITION/
MODIFICATIONS
5265 WARD STREET NE
SMYRNA, GEORGIA 30080
GADOE FACILITY NUMBER: #633-1054
CCCA #19002



THIS DRAWING IS THE EXCLUSIVE PROPERTY OF THE ARCHITECTS AND MAY NOT BE REPRODUCED OR USED WITHOUT THEIR WRITTEN AUTHORIZATION AND PERMISSION.

COPYRIGHT © 2020 COOPER CARUSI COLLINS ARCHITECTS, INC.

RELEASED FOR CONSTRUCTION

| | |
|------------|--|
| 23.10.2019 | GADOE PRELIMINARY |
| 25.09.2019 | PRELIMINARY GADOE SCOPE CHANGE RESUBMITTAL |
| 29.04.2019 | GADOE CHECK SET |
| 10.28.2019 | FINAL PRICING SET |
| 11.04.2019 | RENOVATIONS PERMIT |
| 11.04.2019 | GADOE FINAL SUBMITTAL |
| 12.19.2019 | PERMIT SET |
| 21.06.2020 | BID SET |

NOTE: READ THE SPECIFICATIONS
THIS SET OF DRAWINGS AND SPECIFICATIONS DEFINE PROJECT SCOPE AND CONTRACT REQUIREMENTS. INDIVIDUAL SHEETS SEPARATED FROM THE SET MAY NOT ACCURATELY REFLECT ALL INFORMATION NEEDED TO SUITABLY COVER CERTAIN ITEMS. DO NOT SEPARATE THIS SET OF DRAWINGS INTO INDIVIDUAL SHEETS.

SHEET TITLE
TEACHER WORK
COMPONENT

AR-313