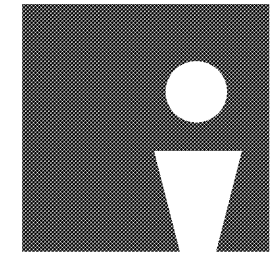




GEORGE W. AUSTIN JR., PE
 212 N. McDowell St., Suite 204
 Charlotte, NC 28204
 (704) 347-7363 / (704) 347-3093
 www.shaltag.com
 SEG-18-181

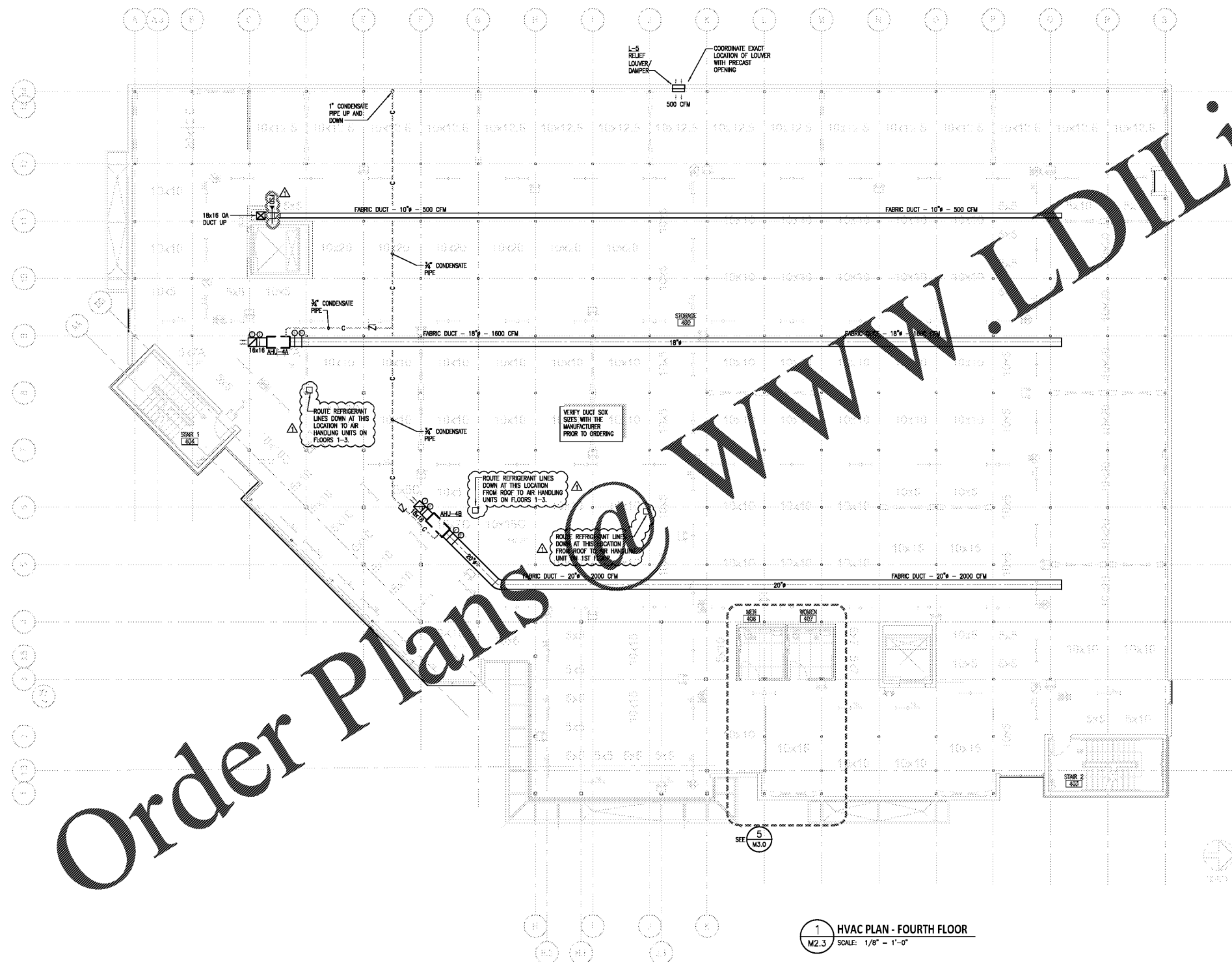


ODA
 overcash demmitt

2010 south tryon st. suite 1a
 charlotte north carolina 28203
 office .704.332.1618
 web.www.odaarch.com



This firm has been electronically signed and sealed by (George W. Austin, Jr., PE) on the date and/or time stamp shown using a digital signature.
 Printed copies of this document are not considered signed and sealed and the signature must be verified on any electronic copy.



www.LDILine.com

Order Plans

- SEE LOCATIONS FOR REFRIGERANT CHASES ON THE PLANS. DO NOT INSTALL REFRIGERANT PIPING IN AN ENCLOSED PUBLIC STAIRWAY, STAIR LANDING, OR MEANS OF EGRESS.
- PROVIDE THERMOSTATIC CONTROLS SETUP PER MORNINGSTAR STANDARDIZED INSTRUCTIONS, PROVIDED BY MORNINGSTAR.
- FABRIC DUCT AS SPECIFIED BY DUCTOXX ENGINEERING SERVICES.
- COORDINATE EXACT LOCATION OF AIR HANDLING UNITS AND ASSOCIATED DUCTWORK WITH STRUCTURAL TO AVOID CONFLICTS.
- ORIENT CABINET AND AIR FLOW OF AIR HANDLING UNITS SO THAT THEY MAY BE SERVICED FROM FROM THE CORRIDOR SIDE OF THE UNIT.
- FOR RETURN AIR DUCTS IN STORAGE AREAS, INSTALL AN ELBOW AT THE INTAKE AND COVER THE OPENING WITH 1/4" HARDWARE CLOTH.
- PROTECT ALL HVAC COMPONENTS THAT RUN IN STORAGE UNITS. COORDINATE TYPE/METHOD OF PROTECTION WITH MORNINGSTAR STORAGE.
- PROVIDE CONDENSATE PUMPS WHERE GRAVITY DRAINAGE IS NOT POSSIBLE.
- CONDENSATE DRAIN CONNECTION AT EACH AIR HANDLER IS 3/4".
- MAINTAIN 1% SLOPE ON ALL SEGMENTS OF CONDENSATE LINES THAT DRAIN BY GRAVITY.
- FABRIC DUCT MANUFACTURER TO PROVIDE A DESIGN AND PERFORMANCE GUARANTEE ALONG WITH THE PRODUCT WARRANTY. SEE WRITTEN SPECIFICATIONS FOR SIZES, MATERIAL AND METHOD OF HANGING AND FOR ADDITIONAL PRODUCT CRITERIA. METHOD OF AIR DISTRIBUTION FROM THE FABRIC DUCT, SUCH AS: LINEAR VENTS, ORIFICES, OR NOZZLES, AND THE ORIENTATION OF THESE DEVICES, MUST BE SUBMITTED THROUGH DETAILED SHOP DRAWINGS. SHOP DRAWINGS MUST SHOW AIR VOLUME, THROW DISTANCE AND ORIENTATION OF VENTING (OWNER PREFERS THE VENTS TO BLOW IN THE HORIZONTAL DIRECTION, WITH THE VENTS AT THE 3 O'CLOCK AND 9 O'CLOCK POSITIONS AS VIEWED FROM THE END OF THE DUCT LOOKING INTO THE AIRSTREAM). PRIOR TO FABRICATION OF FABRIC DUCT, THE MECHANICAL ENGINEER OF RECORD MUST APPROVE THE FABRIC DUCT SHOP DRAWINGS. FABRIC DUCT MANUFACTURER FAILING TO PROVIDE THE STATED INFORMATION WILL NOT BE APPROVED. FABRIC DUCT SYSTEM SHALL COMPLY WITH NFPA-95A, ICC-A-187 AND UL 2518 AND SHALL PROVIDE ALL REQUIRED SUPPORTING DOCUMENTATION FOR APPROVAL.



MORNINGSTAR STORAGE

MORNINGSTAR STORAGE
 9700 SOUTH U.S. HWY 17-92
 MAITLAND, FL 32751

ODA Project No. 183348
FOR CONSTRUCTION

08.19.2019

REVISIONS		
No.	Description	Date
1	PLAN REVIEW COMMENTS	12.13.19

MECHANICAL
 HVAC PLAN -
 FOURTH FLOOR

M2.3
 Copyright 2017 Overcash Demmitt Architects
 18-18M.DWG

1 HVAC PLAN - FOURTH FLOOR
 M2.3 SCALE: 1/8" = 1'-0"