



STENGENL-HILL
ARCHITECTURE

413 WEST MAIN STREET
LOUISVILLE, KENTUCKY 40202
502.893.1875
502.893.1876 fax

Civil Engineering



Structural Engineering



STRUCTURAL ENGINEERING, P. E.

Mechanical/Electrical Engineering



Interior Design



INTERIOR DESIGN STUDIO

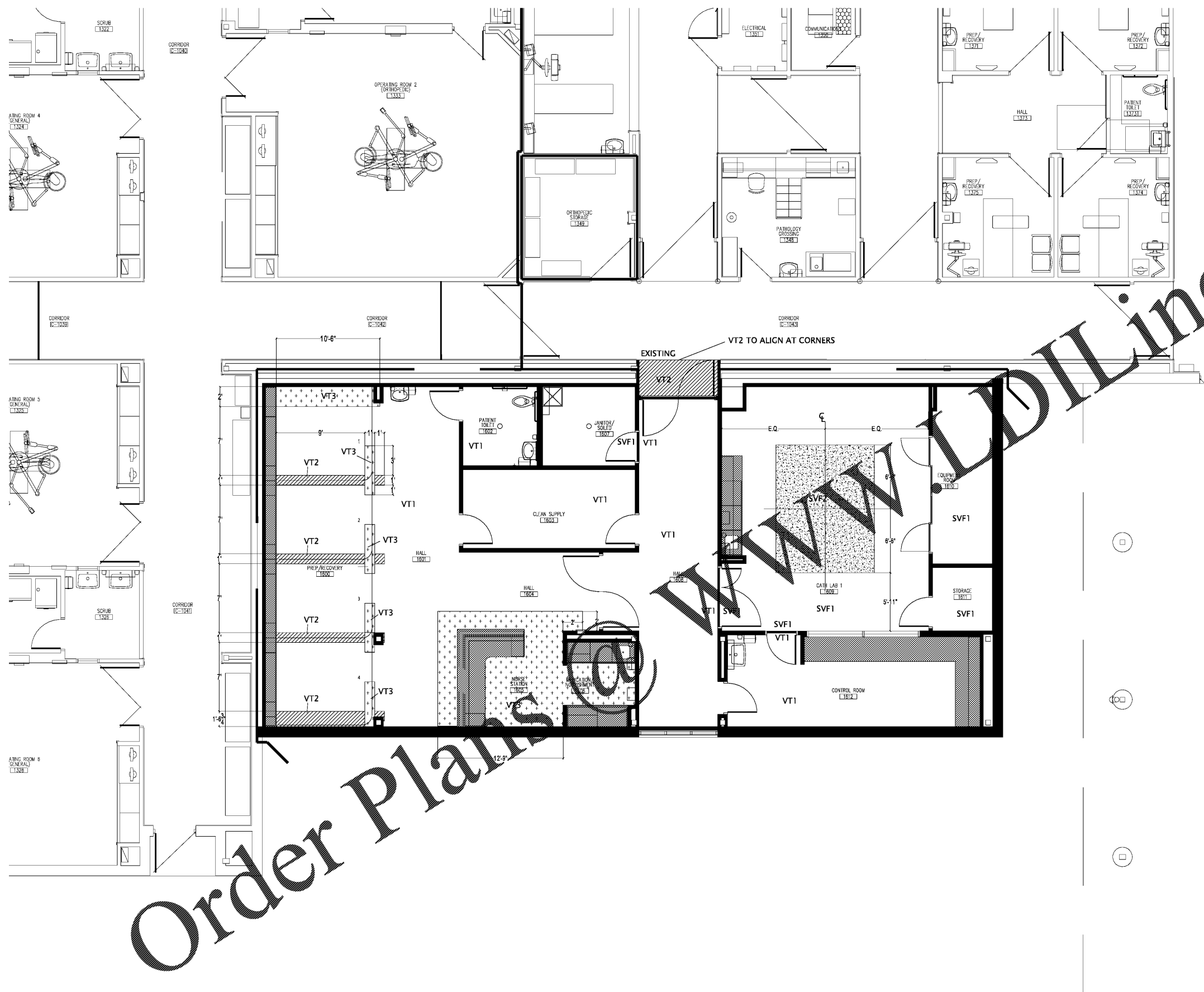


CATH LAB SUITE ADDITION
CLARK REGIONAL MEDICAL CENTER
WINCHESTER, KENTUCKY

30 DECEMBER 2019
CRM1807

F1.3
FLOOR
PATTERN
PLAN

FINAL CONSTRUCTION DOCUMENTS



Order Plans @

WWW.DILine.com

