



CORPORATE OFFICE: LITTLE & SON, INC.  
1000 PUBLIX CENTER DRIVE, RALEIGH, NC 27604  
800.368.1247



10/08/19



ARCHITECT OF RECORD:  
BRIAN T. MORRISON  
NORTH CAROLINA REGISTRATION # 5197  
STRUCTURAL ENGINEER OF RECORD:  
BRIAN T. MORRISON  
NORTH CAROLINA REGISTRATION # 5197  
PLUMBING ENGINEER OF RECORD:  
MIGUEL VAZQUEZ  
NORTH CAROLINA REGISTRATION # 50083  
ELECTRICAL ENGINEER OF RECORD:  
MIGUEL VAZQUEZ  
NORTH CAROLINA REGISTRATION # 50083  
MECHANICAL ENGINEER OF RECORD:  
MIGUEL VAZQUEZ  
NORTH CAROLINA REGISTRATION # 50083  
ELECTRICAL ENGINEER OF RECORD:  
BRIAN T. MORRISON  
NORTH CAROLINA REGISTRATION # 5197  
MECHANICAL ENGINEER OF RECORD:  
BRIAN T. MORRISON  
NORTH CAROLINA REGISTRATION # 5197

100% FOR CONSTRUCTION

DATE: 10/08/2019

PROJECT NAME:

CONTRACT NO.:

PROJECT LOCATION:

CLIENT:

DATE:

SCALE:

BY:

CHECKED BY:

DATE:

SCALE:

BY:

CHECKED BY:

DATE:

SCALE:

BY:

CHECKED BY:

DATE:

SCALE:

BY:

CHECKED BY:

DATE:

SCALE:

BY:

CHECKED BY:

DATE:

SCALE:

BY:

CHECKED BY:

DATE:

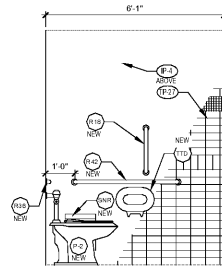
SCALE:

TOILET ACCESSORY LEGEND:

- \* (BCS) BABY CHANGING STATION - SSC INC. DIAPER DEPOT MODEL #4301 (POWDER GRAY)
- (CH) COAT HOOK - B-233 CLOTHES HOOK AND BUMPER (BOBRICK) MOUNT AT 48" AFF TO TOP OF HOOK
- (FVA) FLUSH VALVE ASSEMBLY - SEE PLUMBING SPECIFICATIONS
- (MR1) MIRROR - 18" x 36" w/ S.S. FRAME - SEE ARCHITECTURAL SPECIFICATIONS
- (MR2) MIRROR - 18" x 42" MOUNT ON INSIDE OF RESTROOM DOOR OR WHERE INDICATED ON THE PLAN. SEE ARCHITECTURAL SPECIFICATIONS
- (MR3) MIRROR - 36" HIGH. SEE INTERIOR ELEVATIONS FOR WIDTH. SEE ARCH SPECIFICATIONS
- (P-1) WATER CLOSET - SEE PLUMBING SCHEDULE
- (P-2) WATER CLOSET - ADA COMPLIANT. SEE PLUMBING SCHEDULE
- (P-3) URINAL - ADA COMPLIANT. SEE PLUMBING SCHEDULE
- (P-4) WALL HANG LAVATORY - ADA COMPLIANT. SEE PLUMBING SCHEDULE
- (P-4A) WALL HANG LAVATORY - ADA COMPLIANT. SEE PLUMBING SCHEDULE
- (P-5) LAVATORY - IN ADA COMPLIANT VANITY, FINISH: MATTERHORN. SEE PLUMBING SCHEDULE
- (P-6) LAVATORY - ADA COMPLIANT, FINISH: WHITE. SEE PLUMBING SCHEDULE
- (P-18) WATER HILO COOLER - ADA COMPLIANT. SEE PLUMBING SCHEDULE
- (P-19) WATER SINGLE COOLER - ADA COMPLIANT. SEE PLUMBING SCHEDULE
- \* (PTD) PAPER TOWEL DISPENSER - KIMBERLY CLARK MODEL 06302
- (R18) VERTICAL GRAB BAR - 18" S.S., SEE ARCHITECTURAL SPECIFICATIONS
- (R24) GRAB BAR - 24" S.S., SEE ARCHITECTURAL SPECIFICATIONS
- (R36) GRAB BAR - 36" S.S., SEE ARCHITECTURAL SPECIFICATIONS
- (R42) GRAB BAR - 42" S.S., SEE ARCHITECTURAL SPECIFICATIONS
- \* (SCD) SEAT COVER DISPENSER - KIMBERLY CLARK MODEL 06526
- \* (SD) SOAP DISPENSER - KIMBERLY CLARK MODEL 91011
- \* (SNR) SANITARY NAPKIN RECEPTACLE - RUBBERMAID MODEL 6140-00; IN WOMEN'S OR UNISEX RESTROOMS ONLY.
- \* (TTD) TOILET TISSUE DISPENSER - KIMBERLY CLARK MODEL 06566
- \* (TR1) TRASH RECEPTACLE - (CONTINENTAL MODEL NO. 2819; IN W.C. WASTEBASKET)
- (TR2) NOT USED
- \* (TR3) TRASH RECEPTACLE - (CONTINENTAL MODEL NO. 2819; IN W.C. WASTEBASKET) WITH DROP FRONT LID WHEN OPEN. CABINET HUNG TRASH RECEPTACLE
- (EHD) ELECTRIC HAND DRYER - AS MANUFACTURED MODEL 1180 - WHITE (ALTERNATE FOR REMODELS ONLY)
- \* DENOTES ITEMS THAT SHALL BE FURNISHED AND INSTALLED BY PUBLIX

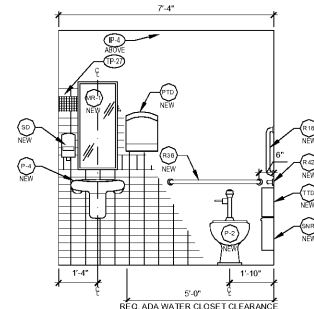
ENLARGED PLAN/ELEVATION GENERAL NOTES:  
1. NEW CUSTOMER RESTROOM TOILET PARTITIONS TO BE SCRANTON "PARCHEMENT"  
2. NEW ASSOCIATE RESTROOM TOILET PARTITIONS TO BE COMTECS CL-00 "GREY"  
OR EQUAL, IF APPLICABLE  
3. DIMENSIONS ARE TO FINISH FACE UNO.

ENLARGED DEMOLITION PLAN LEGEND/KEY NOTES:  
--- (ITEMS) TO BE REMOVED  
(D) (ITEMS) TO BE RELOCATED/REMOVED



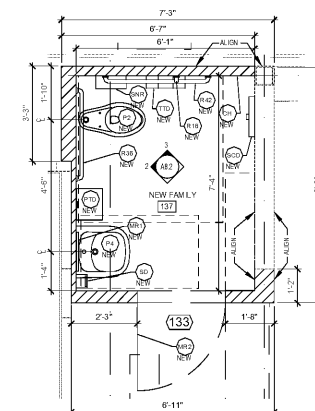
NEW FAMILY RESTROOM INTERIOR ELEVATIONS:  
SCALE: 1/2" = 1'-0"

NOTE: FOR DIMENSIONS, DETAILS AND SIGNAGE SEE ADA STANDARD DETAILS SHEET ADA1 AND ADA2



NEW FAMILY RESTROOM INTERIOR ELEVATIONS:  
SCALE: 1/2" = 1'-0"

NOTE: FOR DIMENSIONS, DETAILS AND SIGNAGE SEE ADA STANDARD DETAILS SHEET ADA1 AND ADA2



ENLARGED NEW FAMILY RESTROOM PLAN ROOM: 137  
SCALE: 1/2" = 1'-0"

NOTE: FOR DIMENSIONS, DETAILS AND SIGNAGE SEE ADA STANDARD DETAILS SHEET ADA1 AND ADA2

Order Plans @ www.LDILine.com