

CONFIDENTIAL COPYRIGHT 2016 SCHENKEL & SHULTZ INC.
 SEE WWW.SCHENKELSHULTZ.COM/COPYRIGHT FOR POLICY AND INFORMATION
 PURSUANT TO SECTION 17(2)(b) OF THE COPYRIGHT ACT, 17 U.S.C. ALL CONCEPTS, IDEAS, DESIGN, ARRANGEMENTS, DRAWINGS AND PLANS INDICATED OR REPRESENTED BY THIS DOCUMENT ARE COPYRIGHTED BY SCHENKEL & SHULTZ INC. AS SUCH ALL CONCEPTS, IDEAS, DESIGN, ARRANGEMENTS, DRAWINGS AND PLANS INDICATED OR REPRESENTED BY THIS DOCUMENT ARE DERIVED BY AND THE PROPERTY OF SCHENKEL & SHULTZ AND WERE CREATED, DEVELOPED AND DEVELOPED FOR ITS OWN USE. NONE OF THE IDEAS, DESIGN, ARRANGEMENTS OR PLANS SHALL BE USED BY OR DISCLOSED TO ANY PERSON ARCHITECTURAL OR ENGINEERING FIRM, CONTRACTOR, SUBCONTRACTOR, SUPPLIER OR CORPORATION FOR ANY PURPOSE WHATSOEVER WITHOUT THE WRITTEN PERMISSION OF SCHENKEL & SHULTZ INC. PURSUANT TO SECTION 17(2)(b) OF THE COPYRIGHT ACT, 17 U.S.C. 107 AND 108. PERMISSION FOR AN ARCHITECTURAL WORK CREATED AS A WORK MADE FOR HIRE ON OR AFTER DECEMBER 31, 1991, LASTS FOR 95 YEARS FROM THE DATE OF PUBLICATION OF THE WORK OR FOR 120 YEARS FROM THE DATE OF CREATION OF THE UNPUBLISHED PLANS WHICHEVER TERM IS LESS.
 WARNING: REPRODUCTION HEREOF IS A CRIMINAL OFFENSE UNDER SECTION 107 OF THE COPYRIGHT ACT, 17 U.S.C. 107 AND 108. UNAUTHORIZED REPRODUCTION OR TRANSMISSION OF THESE SECRETS OR INFORMATION IN VIOLATION OF 17 U.S.C. 107 AND 108 AND OTHER LAWS, THE CONCEPTS, IDEAS, DESIGN, ARRANGEMENTS, DRAWINGS AND PLANS INDICATED OR REPRESENTED BY THIS DOCUMENT ARE THE PROPERTY OF SCHENKEL & SHULTZ INC. ANY REPRODUCTION OR TRANSMISSION OF THESE SECRETS OR INFORMATION IN VIOLATION OF THE FEDERAL STATUTES AND LOCAL LAWS.
 WRITTEN DIMENSIONS ON THESE DOCUMENTS SHALL HAVE PRECEDENCE OVER SCALE DIMENSIONS. CONTRACTORS SHALL VERIFY AND BE RESPONSIBLE FOR ALL DIMENSIONS AND CONDITIONS OF THE JOB AND THE FIELD. ANY VARIATION FROM THE DIMENSIONS AND CONDITIONS SHOWN IN THESE DRAWINGS, SHOP DRAWINGS AND OR DETAILS MUST BE SUBMITTED TO THIS OFFICE FOR REVIEW AND APPROVAL PRIOR TO CONSTRUCTION.

SCHENKELSHULTZ
 ARCHITECTURE
 300 East Robinson Street
 Suite 300
 Orlando, FL 32801
 voice 407-872-3322
 fax 407-872-3303
 schenkelsultz.com
 SS Lic. No. -
MATERN
 130 Candace Drive
 Maitland, FL 32751
 ENG. BUS. No. ES-005058 PHONE (407) 745-0223
 CERT. OF ALTH. No. 5096 FAX (407) 745-0355
 MPE JOB #: 2019-114

comm no1920132
 drawn RS
 checked: DAM

Revision Schedule		
No.	Description	Date



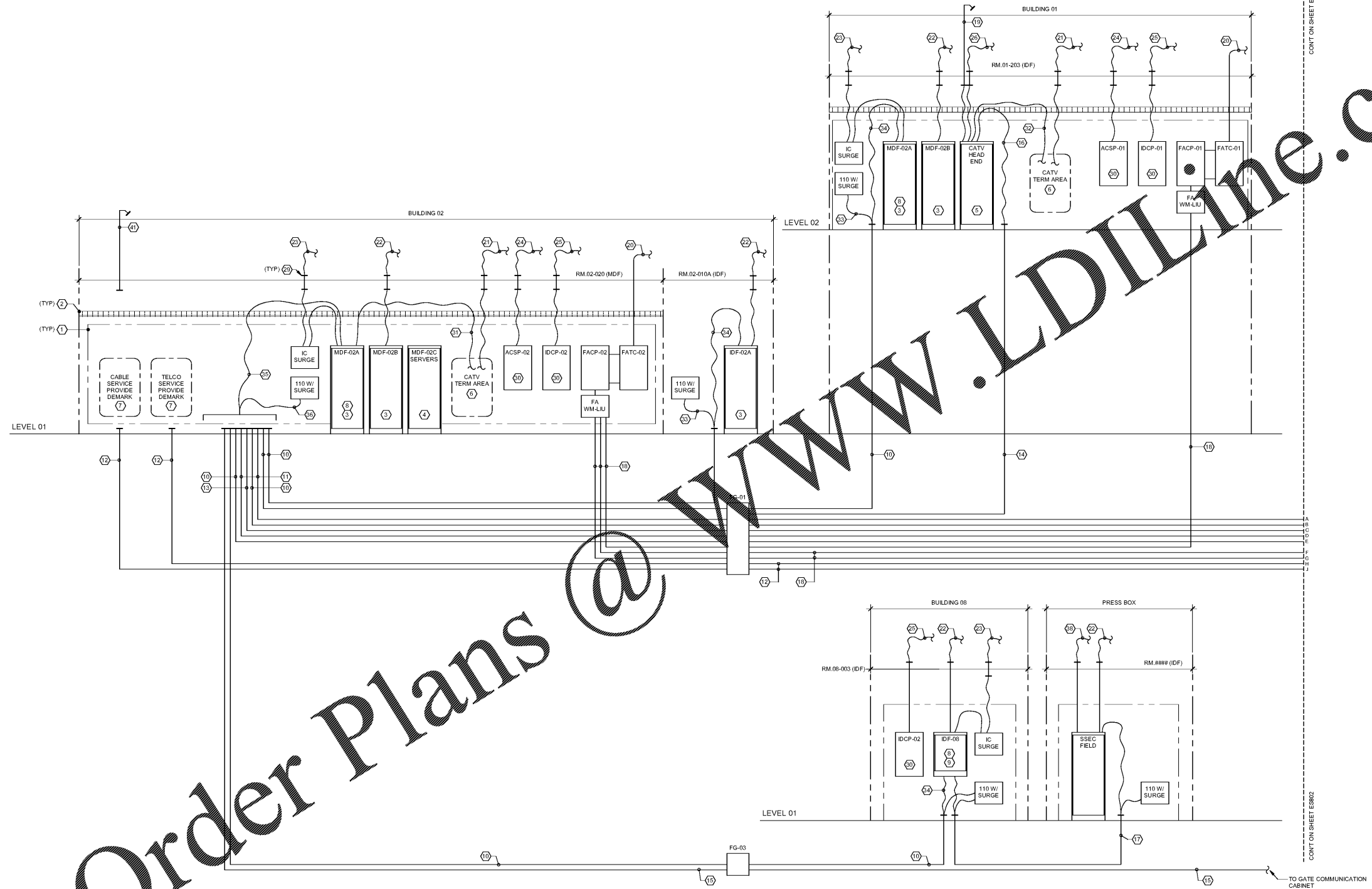
ST. JOHNS COUNTY SCHOOL DISTRICT
HIGH SCHOOL 'HHH'
 BID #2019-33

3750 International Golf Pkwy
 St. Augustine, FL 32092

RISER DIAGRAM - SYSTEMS

ES801

SUBMITTAL: 100% Construction Documents
 ISSUE DATE: 12/13/2019



- SHEET NOTES:**
- ALL PDS AND PABS RACEWAYS TO CONFORM TO ALL REQUIREMENTS OF EIA/ITA, NEC, AND SPECIFICATIONS INCLUDING BUT NOT LIMITED TO: BEND RADII'S, FILL NUMBER OF BENDS BETWEEN PULL BOXES, ETC.
 - SEE SPECIFICATIONS FOR APPLICABLE SYSTEM(S) FOR ADDITIONAL REQUIREMENTS. SEE APPLICABLE DETAILS, ELEVATIONS, ETC. FOR ADDITIONAL/FURTHER REQMTS.
 - KEEP PABS CABLES A MINIMUM OF 12" FROM PDS CABLES.
 - ROUTE PDS CABLES IN CABLE TRAY WHERE AVAILABLE. SEE COMMUNICATION ROOM ENLARGED PLANS AND TYPICAL MDF FOR ELEVATIONS.
 - NOT ALL HEX NOTES USED ON EACH SHEET.

- TEXT NOTES:**
- TTB: REFER TO SPECIFICATIONS FOR ADDITIONAL REQUIREMENTS.
 - OVERHEAD CABLE TRAY FOR COMMUNICATIONS CABLEING.
 - 2-POST RACK FOR TERMINATION OF LOCAL COPPER AND FIBER DATA CABLEING. TERMINATE ALL CABLE ON PATCH PANELS.
 - COMMUNICATION CABINET FOR INSTALLATION OF ALL SERVER EQUIPMENT (ACS/CCTV/DATA/INTERCOM/ETC). PROVIDE UPS AND PDU'S AS REQUIRED PER LOAD TO SUPPORT ALL EQUIPMENT.
 - CATV HEAD END CABINET. INSTALL ALL CATV EQUIPMENT AND OWNER PROVIDED SOURCES IN THIS CABINET. CONNECT ALL REMOTE F.O. CATV RECEIVERS TO THIS EQUIPMENT.
 - TERMINATION AREA FOR LOCAL COAX TV OUTLETS AND DISTRIBUTION EQUIPMENT.
 - SERVICE PROVIDER DEMARK AREA FOR TERMINATION OF INCOMING PROVIDER CABLE AND EQUIPMENT. PROVIDE ALL REQUIRED CROSS CONNECTS TO INTERFACE WITH OWNER EQUIPMENT. COORDINATE ALL REQUIREMENTS WITH OWNER AND SERVICE PROVIDER.
 - IP INTERCOM GATEWAY TO BE LOCATING IN THIS RACK TO SUPPORT ALL LOCAL ANALOG INTERCOM DEVICES.
 - WALL MOUNTED CABINET FOR TERMINATION OF LOCAL COPPER AND FIBER DATA CABLEING. TERMINATE ALL CABLE ON PATCH PANELS.
 - (2) 3" CONDUITS ONE SHALL BE POPULATED WITH (2) MAXCELL 3" 3-CELL INNERDUCTS AND THE OTHER SHALL BE SPARE WITH PULL STRING. POPULATE INNER DUCTS WITH (3) 12SM24MM HYBRID F.O. CABLE AND (3) 25P COPPER BACKBONE CABLE TO MDF, AND A 6SM F.O. CABLE TO THE CATV HEAD END.
 - (2) 3" CONDUITS ONE SHALL BE POPULATED WITH (2) MAXCELL 3" 3-CELL INNERDUCTS AND THE OTHER SHALL BE SPARE WITH PULL STRING. POPULATE INNER DUCTS WITH A 12SM24MM HYBRID F.O. CABLE AND 25P COPPER BACKBONE CABLE TO MDF.
 - (2) 3" CONDUITS ONE SHALL BE POPULATED WITH (2) MAXCELL 3" 3-CELL INNERDUCTS AND THE OTHER SHALL BE SPARE WITH PULL STRING. POPULATE INNER DUCTS WITH A 12SM24MM HYBRID F.O. CABLE AND 25P COPPER BACKBONE CABLE TO MDF, AND A 6SM F.O. CABLE TO THE CATV HEAD END.
 - 4" CONDUIT WITH PULL STRING TO SERVICE PROVIDER INTERFACE POINT AT PROPERTY LINE. COORDINATE EXACT LOCATION PRIOR TO INSTALLATION WITH SERVICE PROVIDERS.
 - (2) 3" CONDUITS ONE SHALL BE POPULATED WITH (2) MAXCELL 3" 3-CELL INNERDUCTS AND THE OTHER SHALL BE SPARE WITH PULL STRING. POPULATE INNER DUCTS WITH (3) 12SM24MM HYBRID F.O. CABLE AND (3) 25P COPPER BACKBONE CABLE TO MDF, AND A 6SM F.O. CABLE TO THE CATV HEAD END.
 - (1) 3" CONDUIT WITH (2) MAXCELL 3" 3-CELL INNERDUCTS TO BE POPULATED WITH CATV F.O. CABLE FOR CAMPUS WIRE DISTRIBUTION.
 - 2" CONDUIT WITH MAXCELL 2" 3-CELL INNERDUCT. POPULATE ONE CELL WITH F.O. CABLE. THE OTHERS SHALL BE SPARE WITH PULL STRINGS.
 - SM F.O. CABLES FROM EACH REMOTE BUILDING TO SUPPORT CATV SYSTEM TO BE TERMINATED AT EACH END IN LIU.
 - (2) 2" CONDUITS TO PRESS BOX / ANNOUNCER BOOTH. ONE SHALL BE POPULATED WITH MAXCELL 2" 3-CELL INNERDUCT AND THE OTHER TO BE SPARE WITH PULL STRING. POPULATE THE INNERDUCT WITH A 12SM24MM F.O. CABLE AND A (4) PAIR C.U. BACKBONE CABLE.
 - (2) 2" CONDUITS, ONE WITH MAXCELL 2" 3-CELL INNERDUCT POPULATED WITH MM F.O. CABLE FOR FIRE ALARM SYSTEM NETWORK. THE OTHER SHALL BE SPARE WITH PULL STRINGS.
 - (2) 2" CONDUITS ROUTED FROM IDF TO HIGHEST PART OF ROOF STRUCTURE FOR OWNERS VENDOR PROVIDED SATELLITE / ANTENNAS. CONDUIT SHALL BE RIGID PIPE THRU ROOF TO 3" ABOVE ROOF DECK WITH WEATHER HEADS, AND BE SUPPORTED IN (2) LOCATION TO ROOF STRUCTURE. COORDINATE FINAL LOCATION WITH OWNER.
 - CONDUIT AND CABLE TO LOCAL FIRE ALARM DEVICES
 - COAX CABLE TO LOCAL CATV OUTLETS
 - CATV CABLE TO LOCAL DATA OUTLETS
 - SPEAKER CABLE TO LOCAL ANALOG INTERCOM SPEAKERS. TERMINATE ON DIN RAIL TERMINAL BLOCKS ON TTB. PROVIDE SURGE ON ALL EXTERIOR SPEAKERS CIRCUITS. CONNECT TO IC GATEWAY AMP IN IDF/MDF RACK AS NOTED.
 - CABLE TO LOCAL ACS DEVICES
 - CABLE TO LOCAL INTRUSION DETECTION SYSTEM DEVICES
 - COAX TO LOCAL TV STUDIO BROADCAST OUTLETS. COORDINATE EXACT LOCATION AND COUNT WITH OWNER.
 - 2" SLEEVE BETWEEN FLOORS WITH 1/2" COAX RISER CABLE TO CATV DISTRIBUTION BETWEEN FLOORS. PROVIDE ADDITIONAL DISTRIBUTION AMP ON EACH UPPER FLOOR TO FEED LOCAL OUTLETS.
 - PROVIDE (4) 4" CONDUIT SLEEVES BETWEEN IDF ROOMS ON SEPARATE FLOORS.
 - 3" CONDUIT SLEEVES WITH BUSHING ON EACH END FROM IDF ROOM TO ADJACENT ABOVE CEILING SPACE. PROVIDE COUNT AS REQUIRED FOR ALL CABLEING.
 - PROVIDE CATV DATA CABLE TO PATCH PANEL IN LOCAL IDF RACK AND LABEL WITH PANEL NAME. CONNECT TO LOCAL VLAN VIA OWNER LAN SWITCH.
 - F.O. PATCH CABLE FOR CATV FROM LIU IN RACK TO F.O. RECEIVER / DISTRIBUTION AMP.
 - COAX CABLE FOR CATV FROM HEAD END IN RACK TO LOCAL DISTRIBUTION AMP.
 - 25P C.U. BACKBONE CABLE TO MDF. TERMINATE EACH END ON 110 BLOCK WITH SURGE, AND PROVIDE ALL REQUIRED CROSS CONNECT TO LOCAL DATA PATCH PANELS TO SUPPORT LOCAL POTS PHONES.
 - HYBRID 12SM24MM F.O. CABLE TO MDF. TERMINATE EACH END IN LIU IN EQUIPMENT RACK.
 - F.O. CABLE FROM ALL REMOTE IDF'S AND EQUIPMENT AND 6SM F.O. CABLE TO CATV HEAD END. TERMINATE ON LIU IN EQUIPMENT RACK.
 - 25P C.U. BACKBONE CABLES FROM EACH BUILDING. TERMINATE EACH END ON 110 BLOCK WITH SURGE, AND PROVIDE ALL REQUIRED CROSS CONNECT TO LOCAL DATA PATCH PANELS TO SUPPORT LOCAL POTS PHONES.
 - HYBRID 12SM24MM F.O. CABLE TO MDF AND 6SM F.O. CABLE TO CATV HEAD END. TERMINATE EACH END ON LIU IN EQUIPMENT RACK.
 - AUDIO CABLE TO LOCAL SOUND SYSTEM DEVICES
 - PROVIDE TERMINAL CABINET ON TTB FOR TERMINATION OF ALL LOCAL FIRE ALARM CONDUIT / CABLE.
 - (2) 2" CONDUIT WITH FIRE ALARM CABLES BETWEEN FLOORS.
 - (2) 2" CONDUITS ROUTED FROM IDF TO HIGHEST PART OF ROOF STRUCTURE FOR OWNERS RADIO VENDOR PROVIDED ANTENNAS. CONDUIT SHALL BE RIGID PIPE THRU ROOF TO 3" ABOVE ROOF DECK WITH WEATHER HEADS, AND BE SUPPORTED IN (2) LOCATION TO ROOF STRUCTURE. COORDINATE EXACT ROOF PENETRATION LOCATION WITH OWNER / ENGINEER
 - FG PULL BOX FOR INTERFACE WITH INCOMING SERVICE PROVIDER CONDUIT AND CABLE. COORDINATE EXACT LOCATION PRIOR TO INSTALLATION AND INSTALL PER PROVIDERS REQUIREMENTS.

Order Plans @

WWW.LDILINE.COM

CONT. ON SHEET ES802