

GENERAL NOTES

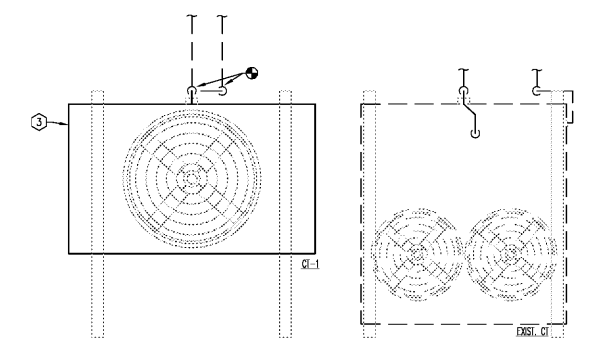
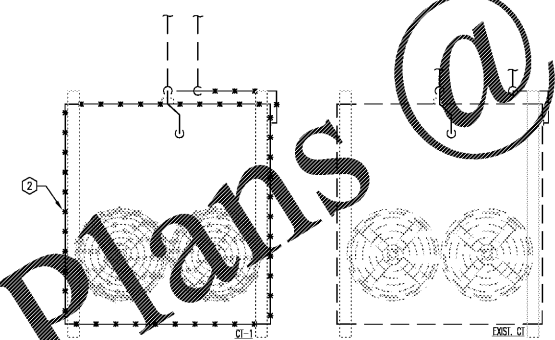
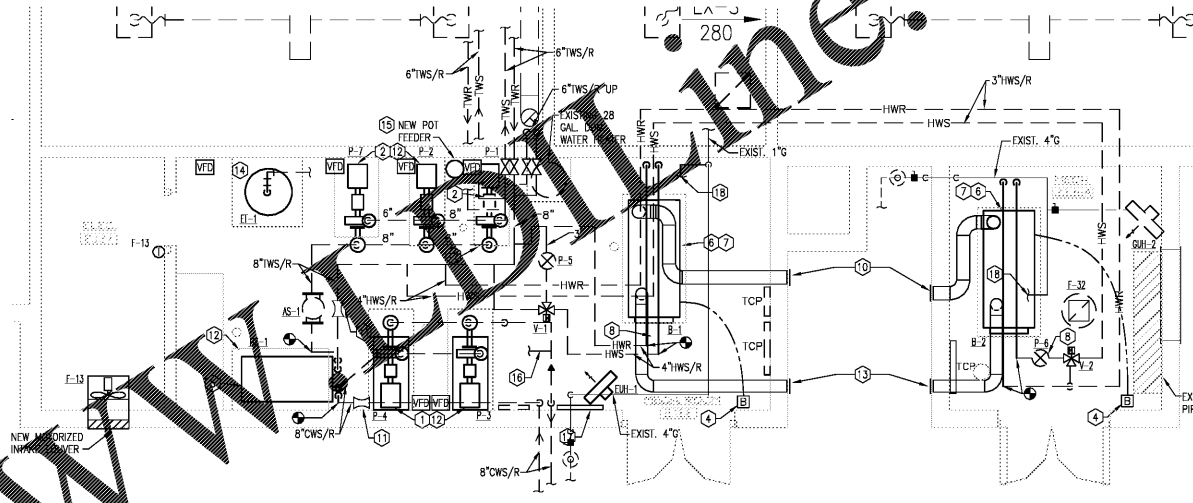
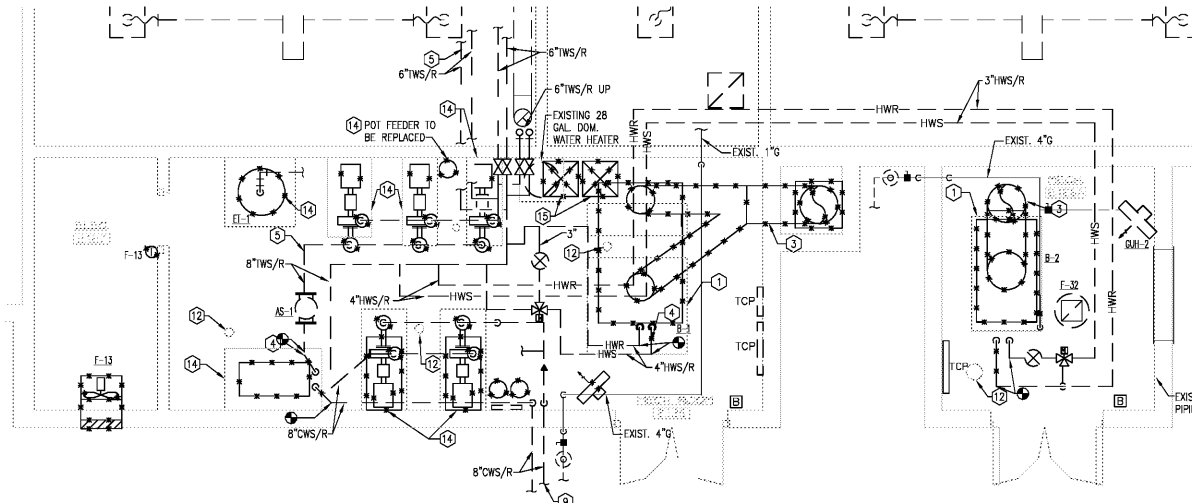
1. SEE SHEET M0.1 FOR HVAC NOTES.

KEY NOTES - DEMOLITION

- 1 REMOVE EXISTING MECHANICAL EQUIPMENT AND ASSOCIATED CONCRETE HOUSEKEEP PAD.
- 2 REMOVE EXISTING COOLING TOWER AND ASSOCIATED WIRING AND APPARATUSSES. EXISTING EQUIPMENT SUPPORTS TO REMAIN FOR FUTURE USE.
- 3 REMOVE EXISTING 26" WELDED BOILER FLUE FROM CONNECTION TO THE BOILER TO THE STACK INSIDE THE CHIMNEY. CAP AND SEAL REMAINING OPENING WALL PER ARCHITECTURAL DETAILS.
- 4 EXISTING PIPING TO BE REMOVED AS REQUIRED, TYPICAL.
- 5 EXISTING BUILDING LOOP WATER PIPING TO REMAIN.
- 6 EXISTING EMERGENCY BOILER SHUTDOWN SWITCH TO BE REPLACED WITH NEW SWITCH.
- 7 EXISTING UNIT HEATER TO BE REMOVED.
- 8 EXISTING GAS UNIT HEATER TO REMAIN.
- 9 EXISTING UNDERGROUND COOLING TOWER WATER PIPING TO BE RE-USED.
- 10 EXISTING VARIABLE FREQUENCY DRIVE FOR PUMP.
- 11 EXISTING VARIABLE FREQUENCY DRIVE FOR COOLING TOWER FAN.
- 12 EXISTING FLOOR DRAIN.
- 13 EXISTING CHEMICAL FEED STATION TO REMAIN.
- 14 REMOVE EXISTING MECHANICAL EQUIPMENT. EXISTING CONCRETE HOUSEKEEPING PAD TO BE MODIFIED AS REQUIRED TO FIT NEW EQUIPMENT.
- 15 CAP ENDS OF THE TWO 24x24 COMBUSTION AIR INTAKE.
- 16 REMOVE EXISTING 26" BOILER FLUE VENT FROM BOILER CONNECTION TO TOP OF STACK AT ROOF LEVEL. CAP AND SEAL REMAINING ROOF OPENING PER ARCHITECTURAL DETAILS.

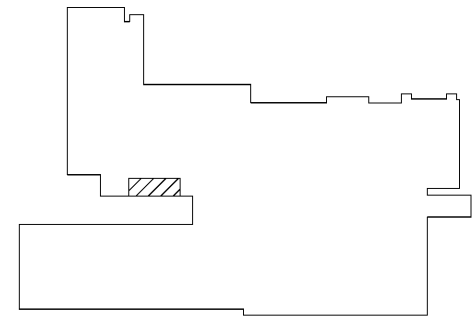
KEY NOTES - NEW WORK

- 1 NEW COOLING TOWER LOOP PUMP. EXISTING VARIABLE FREQUENCY DRIVE TO BE RE-USED. SEE SCHEDULE ON M5.01.
- 2 NEW BUILDING WATER LOOP PUMP. EXISTING VARIABLE FREQUENCY DRIVE TO BE RE-USED. SEE SCHEDULE ON M5.01.
- 3 NEW COOLING TOWER. COORDINATE PLACEMENT WITH EXISTING STRUCTURAL SUPPORT COLUMNS. EXISTING VARIABLE FREQUENCY DRIVE FOR COOLING TOWER FAN TO BE RE-USED.
- 4 NEW EMERGENCY BOILER SHUTDOWN SWITCH.
- 5 NEW PLATE AND FRAME HEAT EXCHANGER. SEE SCHEDULE ON M5.01.
- 6 NEW GAS-FIRED CONDENSING BOILER. PROVIDE 24" MINIMUM CLEARANCE AROUND BOILER ALL SIDES. SEE SCHEDULE ON M5.01.
- 7 NEW 4" THICK CONCRETE EQUIPMENT PAD. SEE DETAIL 16/M4.01.
- 8 NEW HEATING HOT WATER RECIRCULATION PUMP. SEE DETAIL 12/M4.01.
- 9 NEW COMBUSTION AIR INTAKE DUCT. ROUTE AS HIGH AS POSSIBLE AND COORDINATE ROUTING WITH EXISTING & NEW PIPING AND EXISTING DUCTWORK.
- 10 TERMINATE NEW 9" BOILER FLUE VENT THROUGH EXTERIOR WALL WITH BIRD SCREEN. EXHAUST VENT SHALL TERMINATE AS HIGH AS POSSIBLE.
- 11 NEW WATER FLOW TRANSMITTER.
- 12 REPLACE ALL CONCRETE PADS AS NECESSARY TO ACCOMMODATE FOOTPRINT OF NEW EQUIPMENT. EDGE OF PAD SHOULD BE NO CLOSER THAN 4" TO EDGE OF SUPPORT FRAME/MOUNTING FEET.
- 13 TERMINATE NEW 8" BOILER INTAKE THROUGH EXTERIOR WALL WITH DRYER INLET. OPENING SHALL BE 24" ABOVE GRADE AND PROTECTED WITH A BIRD SCREEN.
- 14 NEW EXPANSION TANK.
- 15 NEW 5 GALLON POT FEEDER. SEE DETAIL 1/M4.1.
- 16 CONDENSER WATER MAKE-UP. SEE DETAIL 2/M4.1.
- 17 THE COOLING TOWER LOOP CHEMICAL FEED STATION SHALL BE UPGRADED TO THE "SMART RELEASE" SYSTEM FROM AQUARIOL. SYSTEM SHALL BE FURNISHED BY THE OWNER AND INSTALLED BY AQUARIOL.
- 18 GAS PIPING: CONTRACTOR SHALL MODIFY NATURAL GAS PIPING FOR CONNECTION OF REPLACEMENT BOILERS. SCOPE INCLUDES REMOVING PIPING FROM DROP/RISERS TO NEW LOCATION OF GAS INLET. REPLACING ISOLATION VALVE IF NECESSARY, PROVIDING A DETAIL AND COMPLYING WITH INSTALLATION REQUIREMENTS OF BOILER MANUFACTURER.



MECHANICAL ROOM DEMOLITION PART PLAN
M3.01 SCALE: 1/4" = 1'-0"

MECHANICAL ROOM NEW WORK PART PLAN
M3.01 SCALE: 1/4" = 1'-0"



KEY PLAN

RELEASED FOR BID



COPYRIGHT OWNERSHIP:
This drawing is the property of Foreman Seeley Fountain Architecture and may not be used, copied or re-used without expressed written permission.
© 2019

Revisions:

**MEADOWCREEK HIGH SCHOOL
HVAC and Roofing Renovations**
4455 Steve Reynolds Blvd.
Norcross, GA 30093

**FOREMAN | SEELEY | FOUNTAIN
architecture**
3901 Governors Lake Drive, Suite 150, Peachtree Corners, Georgia 30071
(770) 725-8433 www.fsfa.com | (770) 725-8466

Sheet Title:
BUILDING 5011 - FIRST
FLOOR HVAC NEW WORK
PLAN
Drawn By: GBP
Scale: AS NOTED
Date: 12/20/19
Job No.: 1911
Sheet No.:

M3.01

Order Plans @ www.wpdline.com