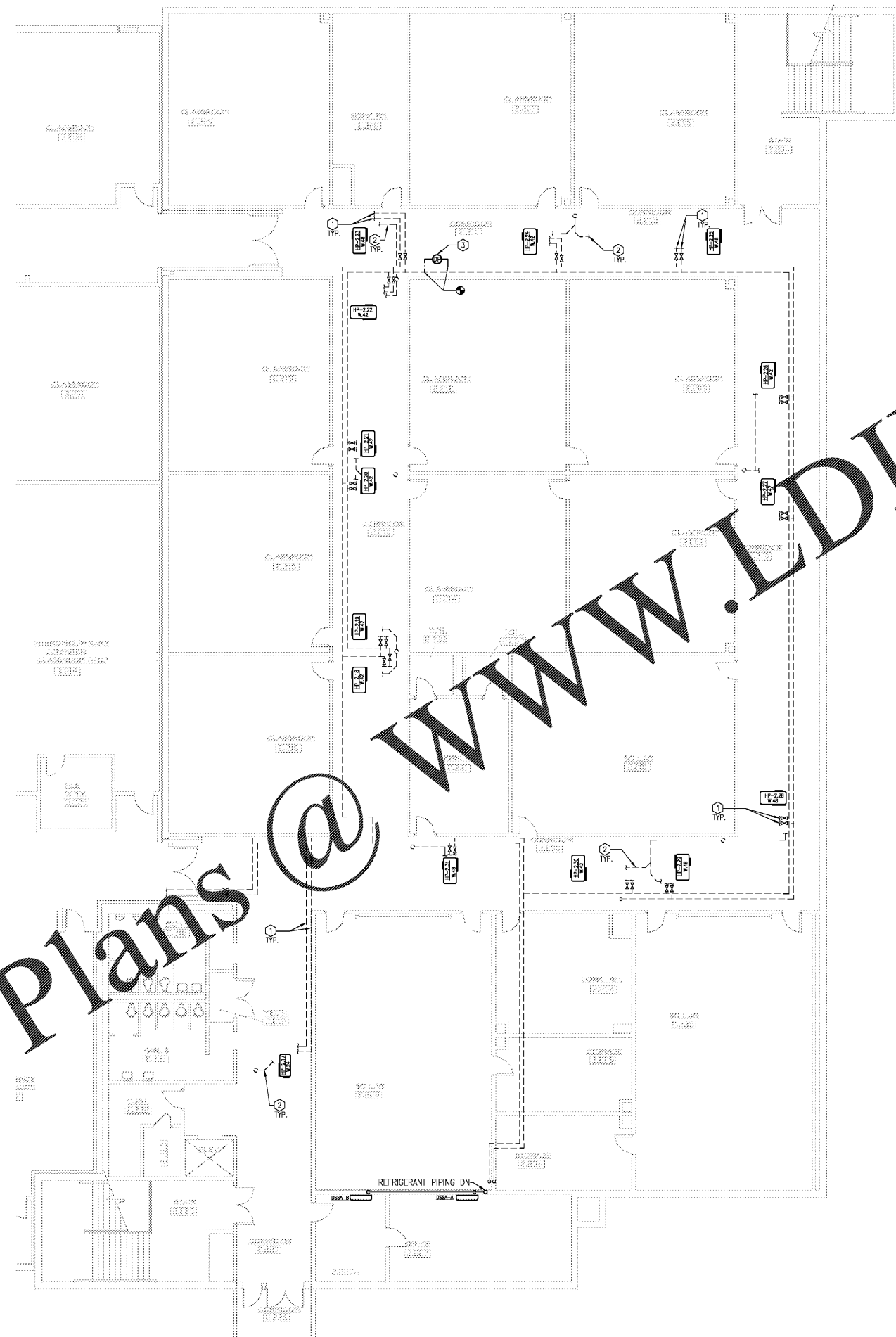


Order Plans @

WWW.LDILine.com

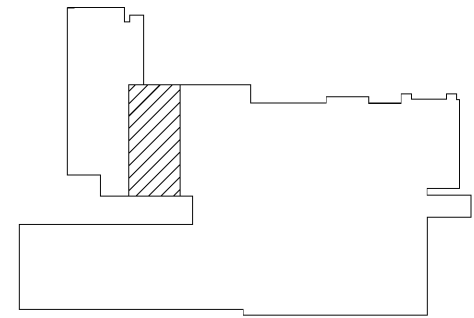


**GENERAL NOTES**

1. SEE SHEET M0.1 FOR HVAC NOTES.

**KEY NOTES**

- ① CONNECT EXISTING PIPING RUNOUTS TO NEW WATER SOURCE HEAT PUMP. PROVIDE NEW HOSE KIT FOR SUPPLY AND RETURN LINES TO CONNECT NEW UNIT TO EXISTING PIPING. FIELD VERIFY ACTUAL LOCATION OF PIPING, DRAINS, AND UNIT POSITION/MOUNTING. SHIFT UNIT AS NECESSARY TO PROVIDE MANUFACTURER RECOMMENDED SERVICE CLEARANCE.
- ② ADJUST EXISTING CONDENSATE LINE AS NECESSARY IN ORDER TO MAINTAIN A 1/8" PER 1' SLOPE AND ALL UNIT CLEARANCES. REPAIR ANY SECTIONS OF DAMAGED CONDENSATE PIPING INSULATION WITH CLOSED-CELL ELASTOMERIC TYPE INSULATION.
- ③ NEW TEMPERED WATER PUMP DIFFERENTIAL PRESSURE SENSOR LOCATION. PROVIDE 3/4" PIPING WITH ISOLATION VALVES AND UNIONS FOR CONNECTION TO DIFFERENTIAL SENSOR TUBING. COORDINATE WITH GAS VENDOR.



KEY PLAN

1 SECOND FLOOR HVAC PIPING NEW WORK PLAN  
M2.22 SCALE: 1/8" = 1'-0"



COPYRIGHT OWNERSHIP: This drawing is the property of Fountain Seeley Foreman Architecture and may not be used, copied or revised without expressed written permission. © 2019

Revisions:

No.	Description

**MEADOWCREEK HIGH SCHOOL  
HVAC and Roofing Renovations**  
4455 Steve Reynolds Blvd.  
Norcross, GA 30093

**FOREMAN | SEELEY | FOUNTAIN  
architecture**  
3091 Governors Lane Dr., Suite 150, Peachtree Corners, Georgia, 30071  
(770) 729-8433 fax (770) 729-8468  
www.FSArchitecture.com

Sheet Title:  
BUILDING 5011 - SECOND FLOOR HVAC PIPING NEW WORK PLAN  
Drawn By: GBP  
Scale: AS NOTED  
Date: 12/20/19  
Job No.: 1911  
Sheet No.:

**M2.22**