

Order Plans @

WWW.LDILine.com



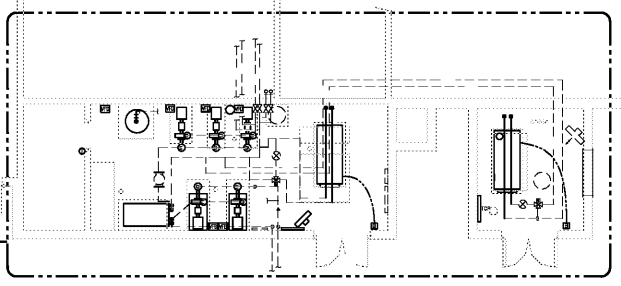
**GENERAL NOTES**

1. SEE SHEET M0.1 FOR HVAC NOTES.

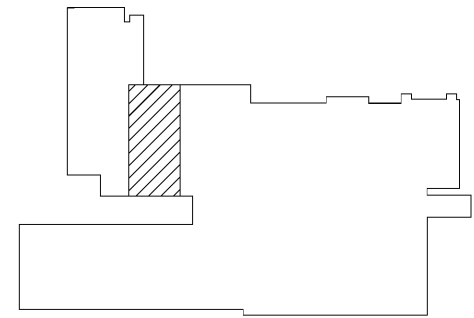
**KEY NOTES**

① CONNECT EXISTING PIPING RUNOUTS TO NEW WATER SOURCE HEAT PUMP UNIT TO EXISTING PIPING. FIELD VERIFY ACTUAL LOCATION OF PIPING, DRAINS, AND UNIT POSITION/MOUNTING. SHIFT UNIT AS NECESSARY TO PROVIDE MANUFACTURER RECOMMENDED SERVICE CLEARANCE.

② ADJUST EXISTING CONDENSATE LINE AS NECESSARY IN ORDER TO MAINTAIN A 1/8" PER 1' SLOPE AND ALL UNIT CLEARANCES. REPAIR ANY SECTIONS OF DAMAGED CONDENSATE PIPING INSULATION WITH CLOSED-CELL ELASTOMERIC TYPE INSULATION.



1 FIRST FLOOR HVAC PIPING NEW WORK PLAN  
M2.21 SCALE: 1/8" = 1'-0"



KEY PLAN



**COPYRIGHT OWNERSHIP:**  
The drawings are the property of Fountain Seeley Foreman Architecture and may not be used, copied or revised without expressed written permission.  
© 2019

Revisions:

No.	Description

**MEADOWCREEK HIGH SCHOOL  
HVAC and Roofing Renovations**  
4455 Steve Reynolds Blvd.  
Norcross, GA 30093

**FOREMAN | SEELEY | FOUNTAIN  
architecture**  
3091 Governors Lane Dr., Suite 150, Peachtree Corners, Georgia, 30071  
(770) 729-8433 Fax: (770) 729-8468  
www.FSArchitecture.com

Sheet Title:  
BUILDING 5011 - FIRST  
FLOOR HVAC PIPING NEW  
WORK PLAN  
Drawn By: GBP  
Scale: AS NOTED  
Date: 12/20/19  
Job No.: 1911  
Sheet No.:

**M2.21**