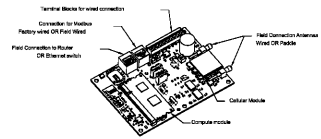


HOOD-2A,2B
HOOD-1A,1B,1C

ELECTRICAL PACKAGE - Job#4051809

NO.	TAG	PACKAGE #	LOCATION	SWITCHES		OPTION	FANS CONTROLLED					
				LOCATION	QUANTITY		FAN TAG	TYPE	H.P.	VOLT	FLA	
1	PREF-EXH	DCV-1111	Utility Cabinet Right	04 - Utility Cabinet Right Hood #4	1 Light	Smart Controls DCV	HEF-3-NEW	Exhaust	3	1,000	208	6.6
2	MAIN-NEW	DCV-2111	Utility Cabinet Right	04 - Utility Cabinet Right Hood #4	1 Light	Smart Controls DCV	HEF-2-NEW	Supply	3	2,000	208	5.9
				04 - Utility Cabinet Right Hood #3	1 Fan		HEF-1-EXIST	Exhaust	3	3,000	208	8.7
							HEF-2-NEW	Exhaust	3	5,000	208	15.0
							MUF-1-EXIST	Supply	3	2,000	208	5.9



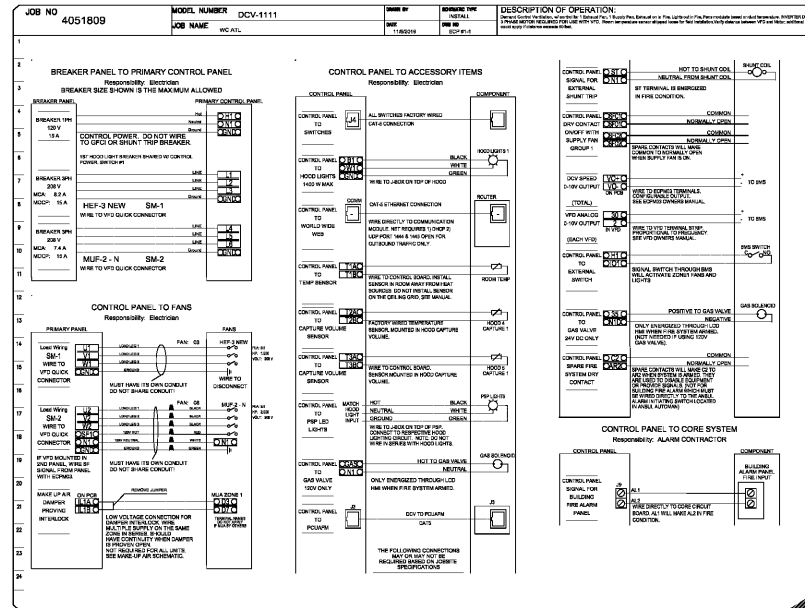
GASink Monitor and Control

— Used control panel to support communications in cloud-based Building Management System.
— Used Control Panel to allow cloud-based Building Management System to monitor real time parameters outlined as MONITOR in the points list.
— Used Control Panel to allow cloud-based Building Management System to control parameters outlined as CONTROL in the points list.
— Used Control Panel to allow cloud-based Building Management System to implement SYSTEM ECONOMIZER control strategy for fully integrated Building Management.

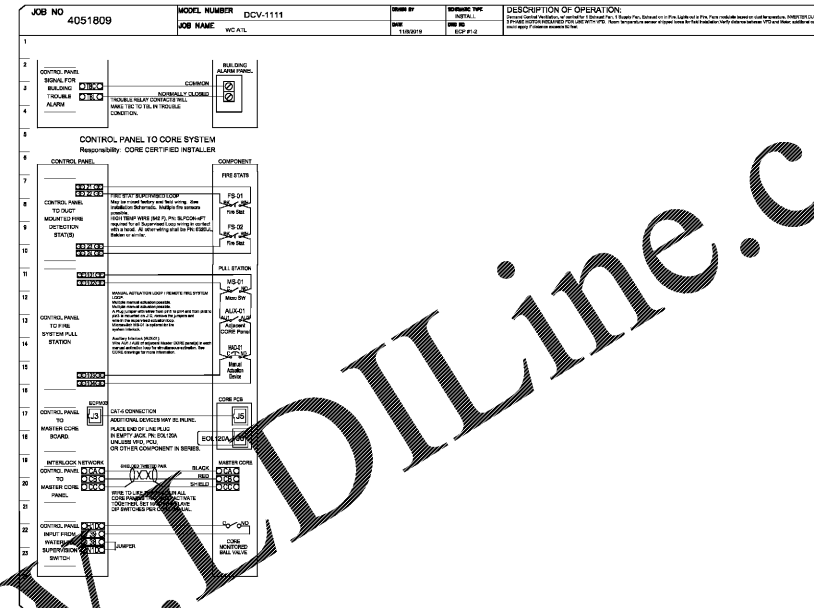
MONITORING AND CONTROL POINTS LIST

RT Package	Function	RT Package	Function
Room Temperature	MONITOR	Room Temperature	MONITOR
Diff. Temperature	MONITOR	Diff. Temperature	MONITOR
Room Air Change Temperature	MONITOR	Room Air Change Temperature	MONITOR
Return Air Change Temperature	MONITOR	Return Air Change Temperature	MONITOR
Fan Speed	MONITOR	Fan Speed	MONITOR
Fan Amperage	MONITOR	Fan Amperage	MONITOR
Fan Status	MONITOR	Fan Status	MONITOR
FFD Status	MONITOR	FFD Status	MONITOR
FFD Filter Chg Percentage	MONITOR	FFD Filter Chg Percentage	MONITOR
Fan Condition	MONITOR	Light Button	MONITOR & CONTROL
FFD Filter Chg Percentage	MONITOR	Flash Button	MONITOR & CONTROL
FFD Filter Chg Percentage	MONITOR	Flash Button	MONITOR & CONTROL

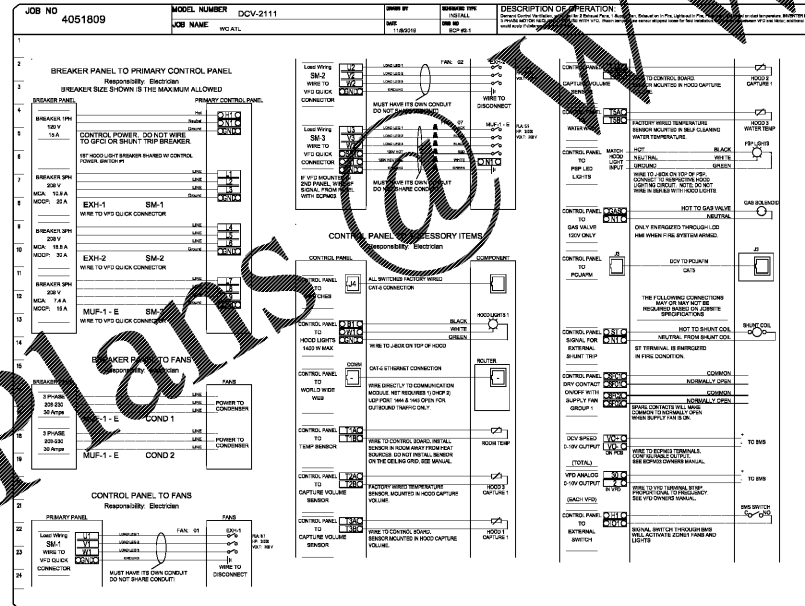
HOOD-2A,2B



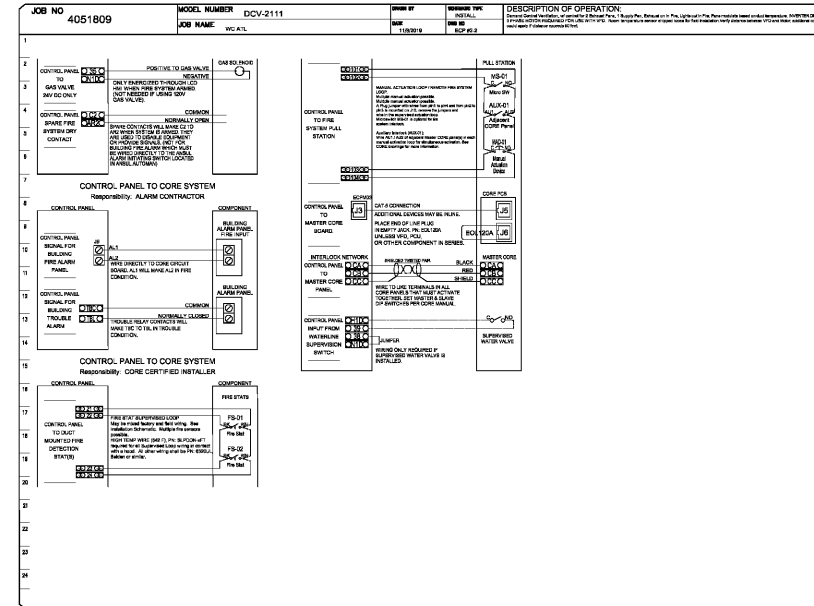
HOOD-2A,2B



HOOD-1A,1B,1C



HOOD-1A,1B,1C



Order Plans

WWW.LDILine.com

PROJECT COORDINATOR
CIVITARESE MORGAN
821 N. RIVERFRONT BLVD, SUITE 700
DALLAS, TEXAS 75207
TEL: 214-613-0680 FAX: 469-730-3341

ARCHITECT
T.M. Morgan Architect
821 N. RIVERFRONT BLVD,
SUITE 700
DALLAS, TEXAS 75207

REG. NO. 10000
PROFESSIONAL
EXPIRES 12/31/2019

ARCHITECTURAL PROJECT NO: 208-19
GREGOR GRAMLICH, PE
GEORGIA LICENSE #3909488
13451 STANLEY ROAD, SUITE 17
LARGO, FLORIDA 33773
(727) 338-9464

WHISKEY
CAKE
KITCHEN

PERIMETER MALL
4400 ASHFORD DUNWOODY RD
ATLANTA, GA 30348

NO.	REVISIONS	DATE

LANDLORD REVIEW ISSUE DATE: 12-05-2019
RD ISSUE DATE: 12-13-2019
PERMIT ISSUE DATE: 12-13-2019
CONSTRUCTION ISSUE DATE: XX-XX-XXXX

DRAWING TITLE
MECHANICAL DETAILS

DRAWING NUMBER
M2.03

ISSUED FOR PERMIT - 12-13-2019