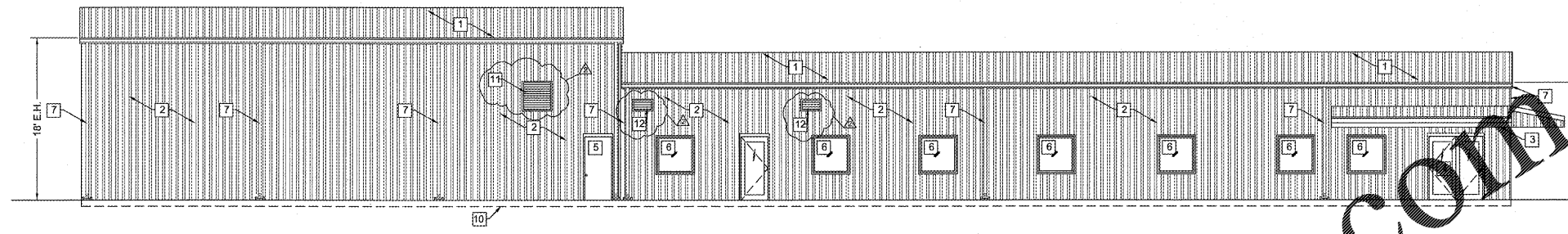
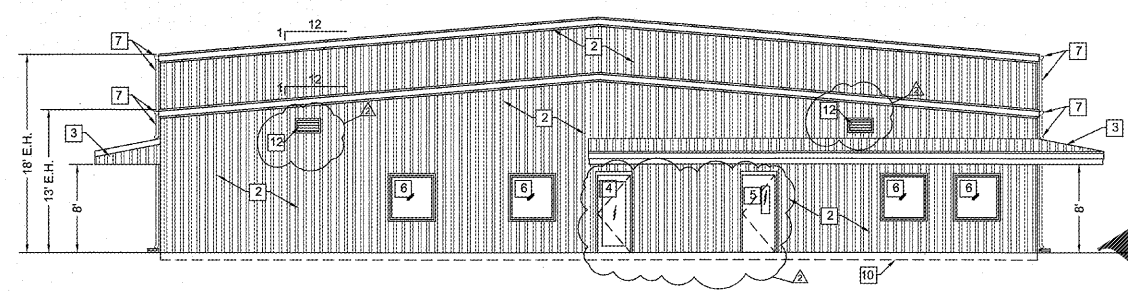


**KEY NOTES (THIS SHEET ONLY):**

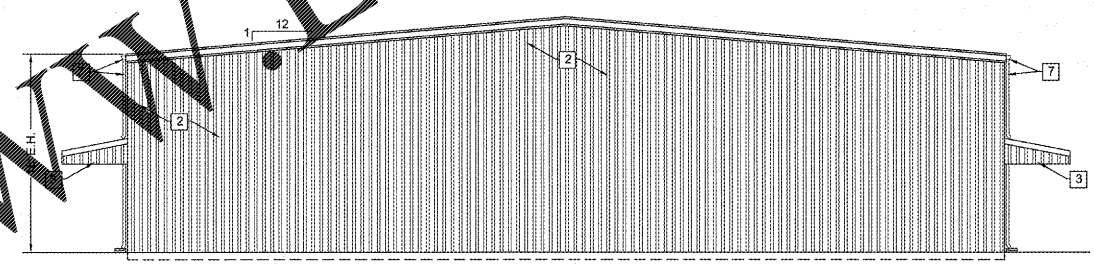
- 1. METAL ROOFING (26 GA. PANEL RIB)
- 2. METAL SIDING (26 GA. PANEL RIB)
- 3. METAL CANOPY (SEE METAL BUILDING MFR. METAL BUILDING PLANS)
- 4. ANOD. ALUMINUM STOREFRONT ENTRY DOOR (SEE DOOR SCHEDULE)
- 5. INSULATED STEEL DOOR (SEE DOOR SCHEDULE)
- 6. ANOD. ALUMINUM STOREFRONT WINDOW (SEE WINDOW SCHEDULE)
- 7. SHEET METL. GUTTERS AND DOWNSPOUTS (SEE METAL BUILDING MFR. METAL BUILDING PLANS)
- 8. 6" BOLLARD FILLED WITH CONCRETE.
- 9. 12' X 14' INSULATED OVERHEAD DOOR WITH OPERATOR
- 10. FOUNDATION (SEE STRUCTURAL DRAWINGS)
- 11. EXHAUST FAN (EF-7) - 36"X36" SEE MECHANICAL DRAWINGS.
- 12. LOUVER (L-1) - 24"X12" - SEE MECHANICAL DRAWINGS.
- 13. LOUVER (L-2) - 72"X36" - SEE MECHANICAL DRAWINGS.



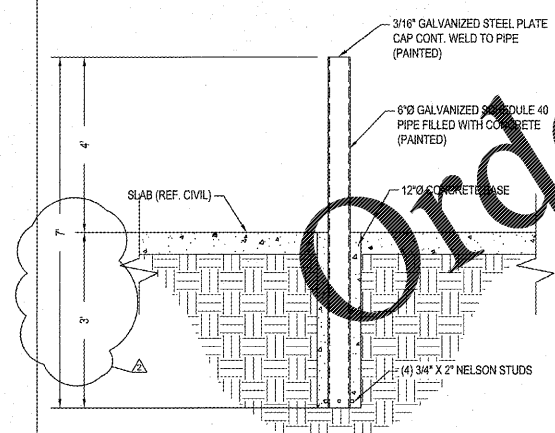
NORTH ELEVATION



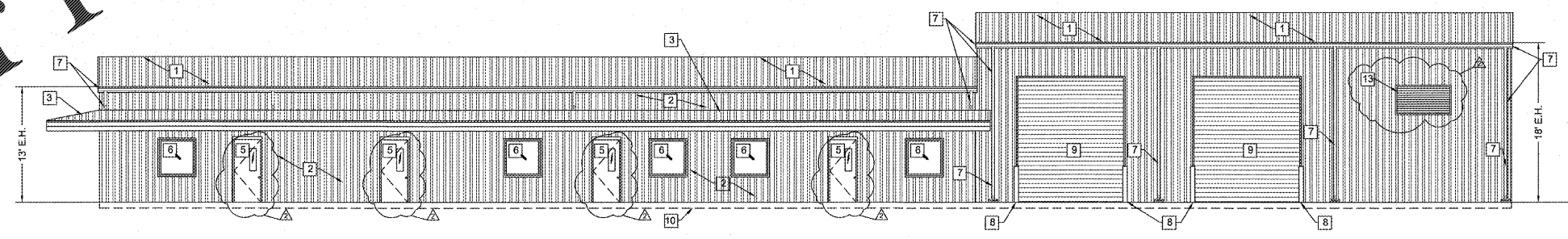
WEST ELEVATION



EAST ELEVATION

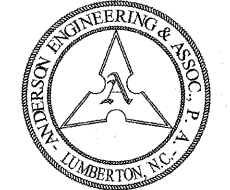


1 BOLLARD DETAIL  
SCALE: 1/2"=1'-0"



SOUTH ELEVATION

WWW.LDILine.com  
 Order Plans @



305 N. Chippewa Street  
Lumberton, NC 28358  
Office: (910) 671-9530  
Fax: (910) 618-0838  
Email:  
andersonengineeringpa@gmail.com  
License #: C-0793

BUILDING PLANS FOR  
**COPART**



The creation of autodesk contained in this drawing including but not limited to all design, text, specifications and images, are owned, except as otherwise expressly stated, by Anderson Engineering & Associates, P.A. and are protected by copyright and other intellectual property laws. This drawing may not be copied, reproduced, transmitted, displayed, distributed, sub-licensed, altered, utilized for other projects or otherwise used in any manner without the prior written consent of Anderson Engineering & Associates, P.A., except to the extent that such use constitutes "fair use" under the Copyright Act of 1976 (17 U.S.C. §107), as amended. Project owner may keep one unaltered permanent copy to be used for intended project use only.

**EXTERIOR ELEVATIONS**

PERMIT SET

ISSUE DATE: 1-18-2019

NO.	DATE	REASON
Δ	2-12-2019	OWNER REVIEW
Δ	4-10-2019	REDUCE BUILDING SIZE SCOPE VERIFICATIONS/CONTRACT DOCS, LOUVERS, DOORS, DETAILS, NOTES

SCALE: 1/8"=1'  
DRAWN BY: DJ  
CHECKED BY: LWA  
PROJECT NO.: 60-1656  
DRAWING FILE: 1656  
FILE NO.: 1656-BLDG-REV1  
SHEET NO.

© 2019 Anderson Engineering & Associates, P.A.

**B103**