

C1 2ND FLOOR LIGHTING RENO PLAN
3/16" = 1'-0"



FLOOR PLAN KEY NOTES:

- 01 PROVIDE NEW LIGHT FIXTURE PER LIGHTING FIXTURE SCHEDULE LOCATED ON SHEET E-5.1. CONNECT TO EXISTING LIGHTING CIRCUIT RETAINED FROM DEMOLITION PHASE. FEED CIRCUIT THRU LIGHTING CONTACTOR "LC1"
- 02 PROVIDE NEW EXIT SIGN ABOVE DOOR. CONNECT SWITCHED TO NORMAL CIRCUIT FEEDING CEILING FIXTURES IN THIS SPACE.
- 03 PROVIDE NEW EXIT SIGN ON CEILING ABOVE. CONNECT SWITCHED TO NORMAL CIRCUIT FEEDING CEILING FIXTURES IN THIS SPACE.
- 04 PROVIDE WALL MOUNTED OCCUPANCY SENSOR AT APPROXIMATELY 10'-0" AFF FOR AUTOMATED CONTROL OF LIGHT FIXTURES WHEN ENTERING FROM SECOND FLOOR CORRIDOR. SENSOR SHALL BE EQUAL TO RUBBER MOUNTED DETECTOR. REFER TO DETAIL ON SHEET E-3.2.
- 05 PROVIDE CEILING MOUNTED JUNCTION BOX WITH BLANK COVERPLATE PROVIDE DEDICATED CIRCUIT FOR FUTURE CONNECTION TO CEILING FAN. PROVIDE SWITCH WIRING IN 3/4" CONDUIT FROM CEILING BOX TO WALL MOUNTED JUNCTION BOX FOR FUTURE SWITCHING.
- 06 PROVIDE CEILING MOUNTED JUNCTION BOX WITH BLANK COVERPLATE FOR FUTURE CEILING FAN SWITCHES.
- 07 PROVIDE NEW FIRE ALARM SNAC PANEL AND NECESSARY TERMINAL CABINET AT APPROXIMATE LOCATION SHOWN. CONNECT TO EMERGENCY CIRCUIT ERL-11.
- 08 EXISTING HORN STROBE SHALL BE REWIRED FROM NEW SNAC PANEL AND CONNECTED TO SAME CIRCUIT FEEDING NEW DEVICES IN WEIGHT ROOM.

FLOOR PLAN GENERAL NOTES:

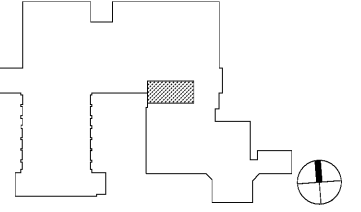
- 1. REFER TO SHEET E-0.1 ELECTRICAL SYMBOLS, ABBREVIATIONS, AND ADDITIONAL PROJECT NOTES.
- 2. ALL DEVICES MOUNTED ON EXISTING WALLS SHALL REMAIN IN PLACE AND CONNECTED TO EXISTING POWER SOURCE. UNLESS NOTED OTHERWISE ON PLANS.

RATED ASSEMBLIES LEGEND:

- NOTES: RATINGS ARE NOT SHOWN THROUGH DOORS FOR CLARITY. SEE A-0.1 FOR PARTITION TYPES. SEE LIFE SAFETY PLANS ON T-2.1 AND T-2.2 FOR FULL EXTENT OF RATINGS. INCLUDING HORIZONTAL RATINGS. RATINGS ARE CONTINUOUS AROUND OPENINGS AND OPENINGS ARE TO BE PROTECTED IN ACCORDANCE WITH THE NC STATE BUILDING CODE. PROTECT ALL PENETRATIONS.
- SEE T-SHEETS FOR UL RATINGS AND ADDITIONAL INFORMATION.
- 1-HR RATED FIRE BARRIER
 - 2-HR RATED FIRE BARRIER
 - SMOKE RESISTANT WALL
 - NEW SMOKE RESISTANT WALL

KEY PLAN

SECOND FLOOR = NTS



Davis Kone
ARCHITECTS, P.A.
ARCHITECTURE · PLANNING · INTERIORS
505 305 BERLIN ROAD, RALEIGH, NC 27605
919.833.3737 · WWW.DAVISKONE.COM

Sigma
Sigma Engineering Solutions, P.C.
2100 Gateway Center Drive
Suite 307
Morrisville, NC 27560
Tel: 919.860.2900
Fax: 919.860.2903
www.sigmaproject.com
North Carolina License # C-24660
Sigma Project # 19027

**UNCG ATHLETICS
COLEMAN BUILDING
WEIGHT ROOM**
SCO ID No. 19 - 20597 - 01A | Code: 41825 | Item: 304
1408 Walker Ave. Greensboro, NC 27402



10-18-19

DKA JOB NUMBER
1915

REVISIONS

These drawings are the property of Davis Kone Architects, P.A. They may not be reused for any purpose without written permission.
Copyright © 2019 by Davis Kone Architects, P.A. All rights reserved.

PE: REGINALD D. ADAMS
PM: PJR
Drawn By: SDR
Plot Date: 10/23/2019 3:37:34 PM

DATE ISSUED

BID DOCUMENTS
10/22/2019

SHEET TITLE
SECOND FLOOR
LIGHTING RENO
PLAN
E-2.3