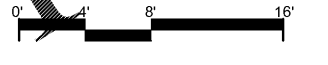


**FLOOR PLAN GENERAL NOTES:**

- REFER TO SHEET E-0.1 ELECTRICAL SYMBOLS, ABBREVIATIONS, AND ADDITIONAL PROJECT NOTES.
- ALL DEVICES MOUNTED ON EXISTING WALLS SHALL REMAIN IN PLACE AND CONNECTED TO EXISTING POWER SOURCE, UNLESS NOTED OTHERWISE ON PLANS.

**1 1ST FLOOR LIGHTING RENO BASE BID PLAN**  
3/16" = 1'-0"



**FLOOR PLAN KEY NOTES:**

- 03 PROVIDE NEW LIGHT FIXTURES PER LIGHTING FIXTURE SCHEDULE. LOCATED ON SHEET E-5.1. CONNECT TO EXISTING LIGHTING CIRCUIT RETAINED FROM DEMOLITION PHASE. FEED CIRCUIT THRU LIGHTING CONTACTOR "LC1" REFER TO SHEET E-2.4 FOR LOCATION OF "LC1".
- 04 PROVIDE NEW EXIT SIGN ABOVE DOOR. CONNECT UNSWITCHED TO NORMAL CIRCUIT FEEDING CEILING FIXTURES IN THIS SPACE.
- 05 PROVIDE SINGLE GANG WALL SWITCH TO OVER-RIDE LIGHTING CONTACTOR FOR MANUAL CONTROL OF OPEN SPACE LIGHT FIXTURES.
- 06 PROVIDE WALL MOUNTED OCCUPANCY SENSOR AT APPROXIMATELY 12'-0" AFF FOR AUTOMATED CONTROL OF LIGHT FIXTURES IN OPEN AREAS. SENSOR SHALL BE EQUAL TO HUBBELL MODEL LODTRPQ1. REFER TO DETAIL ON SHEET E-3.2.
- 07 PROVIDE RECESSED UNDERCOUNTER FIXTURE BELOW UPPER CABINET. PROVIDE SINGLE POLE TOGGLE SWITCH ABOVE COUNTER TO CONTROL FIXTURE.
- 08 PROVIDE NEW RECESSED, SINGLE POLE LIGHT SWITCH. CONNECT TO EXISTING FIXTURES.
- 09 PROVIDE NEW CEILING MOUNTED FIRE ALARM VISUAL DEVICE. CONNECT TO EXISTING FIRST FLOOR FIRE ALARM NOTIFICATION CIRCUIT.

**RATED ASSEMBLIES LEGEND:**

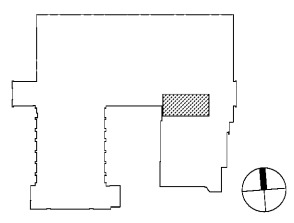
NOTES: RATINGS ARE NOT SHOWN THROUGH DOORS FOR CLARITY. SEE A-0.1 FOR PARTITION TYPES. SEE LIFE SAFETY PLANS ON T-2.1 AND T-2.2 FOR FULL EXTENT OF RATINGS, INCLUDING HORIZONTAL RATINGS. RATINGS ARE CONTINUOUS AROUND OPENINGS AND OPENINGS ARE TO BE PROTECTED IN ACCORDANCE WITH THE NC STATE BUILDING CODE. PROTECT ALL PENETRATIONS.

SEE T-SHEETS FOR UL RATINGS AND ADDITIONAL INFORMATION.

- 1-HR RATED FIRE BARRIER
- 2-HR RATED FIRE BARRIER
- SMOKE RESISTANT WALL
- NEW SMOKE RESISTANT WALL

**KEY PLAN**

FIRST FLOOR = NTS



**Davis Kone**  
ARCHITECTS, P.A.  
ARCHITECTURE · PLANNING · INTERIORS  
505 306 08ERLIN ROAD, RALEIGH, NC 27605  
919 833 3737 · WWW.DAVISKONE.COM

**Sigma**  
Sigma Engineering Solutions, P.C.  
2100 Gateway Center Drive  
Suite 307  
Morrisville, NC 27560  
Tel: 919 660 2900  
Fax: 919 660 2903  
www.sigmaproject.com  
North Carolina License # C-24680  
Sigma Project # 19027

**UNCG ATHLETICS  
COLEMAN BUILDING  
WEIGHT ROOM**  
SCO ID No. 19 - 20597 - 01A | Code: 41825 | Item: 304  
1408 Walker Ave. Greensboro, NC 27402



10-18-19

**DKA JOB NUMBER**  
1915

REVISIONS

These drawings are the property of Davis Kone Architects, P.A. They may not be re-used for any purpose without written permission.  
Copyright © 2019 by Davis Kone Architects, P.A. All rights reserved.  
PE: REGINALD D. ADAMS  
PM: PJR  
Drawn By: SDR  
Plot Date: 10/23/2019 3:37:14 PM

**DATE ISSUED**

BID DOCUMENTS  
10/22/2019

**SHEET TITLE**  
FIRST FLOOR  
LIGHTING RENO  
BASE BID PLAN

**E-2.1**