

**1** 2ND FLOOR ELEC DEMO PLAN  
3/16" = 1'-0"



**FLOOR PLAN KEY NOTES:**

- 01 TEMPORARY WALL WILL BE ERECTED IN CORRIDOR BY GENERAL CONTRACTOR FOR DUST CONTAINMENT DURING CONSTRUCTION. ELECTRICAL CONTRACTOR SHALL RELOCATE, SUPPORT, AND PROTECT LIGHT FIXTURES AND FIRE ALARM DEVICES AS NECESSARY TO ACCOMMODATE THIS WORK. REFER TO SHEET T-4.1 FOR LIMITS OF TEMPORARY WORK. ALL EXISTING SMOKE DETECTORS LOCATED IN HALLWAYS SHALL BE PROTECTED DURING CONSTRUCTION.
- 02 EXISTING FLUORESCENT STROBES LOCATED IN CORRIDOR SHALL REMAIN. DEVICES SHALL BE REWIRED TO BE ON SAME CIRCUIT FEEDING NEW DEVICES INSIDE WEIGHT ROOM.

**FLOOR PLAN GENERAL NOTES:**

1. REFER TO SHEET E-0.1 FOR ELECTRICAL SYMBOLS, ABBREVIATIONS, AND ADDITIONAL PROJECT NOTES.
2. REMOVE DEVICES LOCATED ON DEMOLISHED WALLS. REMOVE WIRING BACK TO NEAREST REMAINING JUNCTION BOX IN EXISTING CIRCUIT.
3. REMOVE EXISTING LIGHT FIXTURES. REMOVE EXISTING FIXTURE WHIPS AND REMOVE CONDUIT AND WIRING BACK TO NEAREST JUNCTION BOX ENTERING SPACE. REMOVE ALL SWITCH WIRING AND SWITCHING DEVICES. KEEP EXISTING CIRCUIT HOMERUN IN PLACE FOR CONNECTION TO NEW FIXTURES.
4. ALL DEVICES MOUNTED ON EXISTING WALLS SHALL REMAIN IN PLACE AND CONNECTED TO EXISTING POWER SOURCE, UNLESS NOTED OTHERWISE ON PLANS.
5. CONTRACTOR SHALL COORDINATE WITH OWNER REGARDING DISPOSAL OF FLUORESCENT LAMPS IN ACCORDANCE WITH OWNER'S FLUORESCENT LAMP RECYCLE PROGRAM OF LAMPS CONTAINING MERCURY. DISPOSAL SHALL BE ONLY TO A LINED LANDFILL IN ACCORDANCE WITH NC GENERAL STATUTE 130A-309.10(m) AND GUIDELINES SET FORTH BY THE DEPT. OF ENVIRONMENTAL QUALITY (DEQ).

Order Plans @ www.LDILine.com

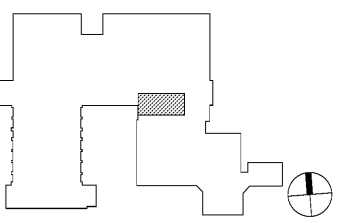
**RATED ASSEMBLIES LEGEND:**

NOTES: RATINGS ARE NOT SHOWN THROUGH DOORS FOR CLARITY. SEE A-0.1 FOR PARTITION TYPES. SEE LIFE SAFETY PLANS ON T-2.1 AND T-2.2 FOR FULL EXTENT OF RATINGS, INCLUDING HORIZONTAL RATINGS. RATINGS ARE CONTINUOUS AROUND OPENINGS AND OPENINGS ARE TO BE PROTECTED IN ACCORDANCE WITH THE NC STATE BUILDING CODE. PROTECT ALL PENETRATIONS.

- SEE T-SHEETS FOR UL RATINGS AND ADDITIONAL INFORMATION.
- 1-HR RATED FIRE BARRIER
- 2-HR RATED FIRE BARRIER
- SMOKE RESISTANT WALL
- NEW SMOKE RESISTANT WALL

**KEY PLAN**

SECOND FLOOR = NTS



**Davis Kone**  
ARCHITECTS, P.A.  
ARCHITECTURE · PLANNING · INTERIORS  
505 300 BERLIN ROAD, RALEIGH, NC 27605  
919.833.3737 · WWW.DAVISKONE.COM

**CONSULTANT**  
**Sigma**  
Sigma Engineering Solutions, P.C.  
2100 Gateway Center Drive  
Suite 307  
Morrisville, NC 27560  
Tel: 919.662.0500  
Fax: 919.542.5503  
www.sigmaproject.com  
North Carolina License # 022460  
Sigma Project # 19227

**UNCG ATHLETICS  
COLEMAN BUILDING  
WEIGHT ROOM**  
SCO ID No. 19 - 20597 - 01A | Code: 41825 | Item: 304  
1408 Walker Ave. Greensboro, NC 27402

SEALS



10-18-19

DKA JOB NUMBER

1915

REVISIONS

NO.	DATE	DESCRIPTION

These drawings are the property of Davis Kone Architects, P.A. They may not be re-used for any purpose without written permission. Copyright © 2019 by Davis Kone Architects, P.A. All rights reserved.

PE: REGINALD D. ADAMS  
PM: PJR  
Drawn By: SDR  
Plot Date: 10/23/2019 3:36:59 PM

DATE ISSUED

BID DOCUMENTS  
10/22/2019

SHEET TITLE  
SECOND FLOOR  
ELECTRICAL DEMO  
PLAN

**E-1.2**