

1 1ST FLOOR ELEC DEMO PLAN
3/16" = 1'-0"

Order Plans @

WWW.LDILine.com

FLOOR PLAN KEY NOTES:

- 01 REMOVE EXISTING DATA OUTLET AND SURFACE MOUNTED RACEWAY. REMOVE EXISTING CABLING AND MOVE TO DATA RACK.
- 02 REMOVE EXISTING RECEPTACLE.
- 03 REMOVE EXISTING WALL MOUNTED SWITCHES.
- 04 REMOVE EXISTING SURFACE MOUNTED JUNCTION BOX. REMOVE WIRING BACK TO NEAREST REMAINING JUNCTION BOX IN CIRCUIT.
- 05 TEMPORARY WALLS WILL BE ERECTED IN CORRIDOR BY GENERAL CONTRACTOR FOR DUST CONTAINMENT DURING CONSTRUCTION. ELECTRICAL CONTRACTOR SHALL RELOCATE, SUPPORT, AND PROTECT LIGHT FIXTURES AND FIRE ALARM DEVICES AS NECESSARY TO ACCOMMODATE THIS WORK. REFER TO SHEET T-4.1 FOR LIMITS OF TEMPORARY WORK. ALL EXISTING SMOKE DETECTORS LOCATED IN HALLWAY SHALL BE PROTECTED DURING CONSTRUCTION.
- 06 REMOVE EXISTING LIGHT SWITCH. REMOVE WIRING BACK TO NEAREST REMAINING FIXTURE INSIDE RESPECTIVE ROOM. PROTECT WIRING AND KEEP IN PLACE FOR RECONNECTION TO NEW SWITCH IN NEW LOCATION.
- 07 EXISTING BATHROOM LIGHT FIXTURES SHALL REMAIN IN PLACE AND PROTECTED DURING DEMOLITION. RECONFIGURE SWITCH WIRING AS NOTED.
- 08 REMOVE EXISTING RECEPTACLE FEEDING DEMOLISHED WATER COOLER. REMOVE WIRING AND CONDUIT BACK TO NEAREST REMAINING JUNCTION BOX IN CIRCUIT AND LABEL FOR RECONNECTION TO NEW WATER COOLER.

FLOOR PLAN GENERAL NOTES:

1. REFER TO SHEET E-0.1 FOR ELECTRICAL SYMBOLS, ABBREVIATIONS, AND ADDITIONAL PROJECT NOTES.
2. REMOVE DEVICES LOCATED ON DEMOLISHED WALLS. REMOVE WIRING BACK TO NEAREST REMAINING JUNCTION BOX IN EXISTING CIRCUIT.
3. REMOVE EXISTING LIGHT FIXTURES. REMOVE EXISTING FIXTURE WHIPS AND REMOVE CONDUIT AND WIRING BACK TO NEAREST JUNCTION BOX ENTERING SPACE. REMOVE ALL SWITCH WIRING AND SWITCHING DEVICES. KEEP EXISTING CIRCUIT HOMERUN IN PLACE FOR CONNECTION TO NEW FIXTURES.
4. ALL DEVICES MOUNTED ON EXISTING WALLS SHALL REMAIN IN PLACE AND CONNECTED TO EXISTING POWER SOURCE, UNLESS NOTED OTHERWISE ON PLANS.
5. CONTRACTOR SHALL COORDINATE WITH OWNER REGARDING DISPOSAL OF FLUORESCENT LAMPS IN ACCORDANCE WITH OWNER'S FLUORESCENT LAMP RECYCLE PROGRAM OF LAMPS CONTAINING MERCURY. DISPOSAL SHALL BE ONLY TO A LINED LANDFILL IN ACCORDANCE WITH NC GENERAL STATUTE 130A-309.10(m) AND GUIDELINES SET FORTH BY THE DEPT. OF ENVIRONMENTAL QUALITY (DEQ).

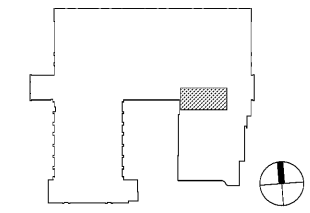
RATED ASSEMBLIES LEGEND:

NOTES: RATINGS ARE NOT SHOWN THROUGH DOORS FOR CLARITY. SEE A-0.1 FOR PARTITION TYPES. SEE LIFE SAFETY PLANS ON T-2.1 AND T-2.2 FOR FULL EXTENT OF RATINGS, INCLUDING HORIZONTAL RATINGS. RATINGS ARE CONTINUOUS AROUND OPENINGS AND OPENINGS ARE TO BE PROTECTED IN ACCORDANCE WITH THE NC STATE BUILDING CODE. PROTECT ALL PENETRATIONS.

- SEE T-SHEETS FOR UL RATINGS AND ADDITIONAL INFORMATION.
- 1-HR RATED FIRE BARRIER
- 2-HR RATED FIRE BARRIER
- SMOKE RESISTANT WALL
- NEW SMOKE RESISTANT WALL

KEY PLAN

FIRST FLOOR = NTS



Davis Kone
ARCHITECTS, P.A.
ARCHITECTURE · PLANNING · INTERIORS
505 300 BERLIN ROAD, RALEIGH, NC 27605
919.833.3737 · WWW.DAVISKONE.COM

Sigma
CONSULTANT
Sigma Engineering Solutions, P.C.
2100 Gateway Center Drive
Suite 307
Morrisville, NC 27560
Tel: 919.660.2500
Fax: 919.542.5503
www.sigmainc.com
North Carolina License # C-24660
Sigma Project # 19227

**UNCG ATHLETICS
COLEMAN BUILDING
WEIGHT ROOM**
SCO ID No. 19 - 20597 - 01A | Code: 41825 | Item: 304
1408 Walker Ave., Greensboro, NC 27402

SEALS



10-18-19

DKA JOB NUMBER
1915

REVISIONS

These drawings are the property of Davis Kone Architects, P.A. They may not be re-used for any purpose without written permission.
Copyright © 2019 by Davis Kone Architects, P.A. All rights reserved.
PE: REGINAL D. ADAMS
PM: PJR
Drawn By: SDR
Plot Date: 10/23/2019 3:36:46 PM

DATE ISSUED

BID DOCUMENTS
10/22/2019

SHEET TITLE
FIRST FLOOR
ELECTRICAL DEMO
PLAN

E-1.1