

**FLOOR PLAN GENERAL NOTES:**  
 1. REFER TO SHEET FP-0.1 FOR GENERAL NOTES.

**1 1ST FLOOR MECH RENO ALTERNATE PLAN**  
 3/16" = 1'-0"

**FLOOR PLAN KEY NOTES:**

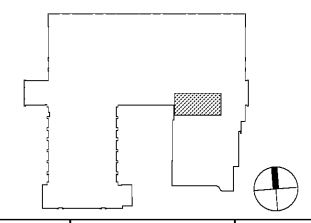
- NOTE: NOT ALL KEY NOTES BELOW ARE APPLICABLE TO THIS SHEET. KEY NOTES SUPPLEMENT INFORMATION FOUND ELSEWHERE IN THE DRAWINGS. SEE SHEET M-0.1 FOR MECHANICAL NOTES, LEGENDS, AND ADDITIONAL REQUIREMENTS.
- 01 DO NOT OBSTRUCT EXISTING OR NEW VAV, TERMINAL CONTROLS, DRIFTCOIL CONTROLS. OFFSET DUCT AS NECESSARY LEAVING A MINIMUM OF 12" CLEAR.
  - 05 ROUTE CONDENSATE DOWN WITHIN MECHANICAL ROOM TO EXISTING FLOOR DRAIN WITH AIR GAP.
  - 06 CONNECT NEW AIR PIPING TO EXISTING OA SERVING AHU-8 IN THIS APPROXIMATE LOCATION. PROVIDE BACKDRIFT DAMPER AND BALANCE DAMPER. BALANCE CFM TO SETPOINT SCHEDULED.

**RATED ASSEMBLIES LEGEND:**

- NOTES: RATINGS ARE NOT SHOWN THROUGH DOORS FOR CLARITY. SEE A-0.1 FOR PARTITION TYPES. SEE LIFE SAFETY PLANS ON T-2.1 AND T-2.2 FOR FULL EXTENT OF RATINGS, INCLUDING HORIZONTAL RATINGS. RATINGS ARE CONTINUOUS AROUND OPENINGS AND OPENINGS ARE TO BE PROTECTED IN ACCORDANCE WITH THE NC STATE BUILDING CODE. PROTECT ALL PENETRATIONS.
- SEE T-SHEETS FOR UL RATINGS AND ADDITIONAL INFORMATION.
- 1-HR RATED FIRE BARRIER
  - 2-HR RATED FIRE BARRIER
  - SMOKE RESISTANT WALL
  - NEW SMOKE RESISTANT WALL

**KEY PLAN**

FIRST FLOOR = NTS



**Davis Kone**  
 ARCHITECTS, P.A.  
 ARCHITECTURE · PLANNING · INTERIORS  
 503 300 0800 / 503 300 0801  
 919 333 3737 · WWW.DAVISKONE.COM

**Sigma**  
 Sigma Engineering Solutions, P.C.  
 2100 Gateway Center Drive  
 Suite 307  
 Morrisville, NC 27560  
 Tel: 919.660.0500  
 Fax: 919.540.6900  
 www.sigmaeng.com  
 North Carolina License # C-24660  
 Sigma Project # 19027

**UNCG ATHLETICS  
 COLEMAN BUILDING  
 WEIGHT ROOM**  
 SCO ID No. 19 - 20597 - 01A | Code: 41825 Item: 304  
 1408 Walker Ave. Greensboro, NC 27402

**SEALS**

**DKA JOB NUMBER**  
 1915

| REVISIONS |
|-----------|
|           |
|           |
|           |
|           |
|           |

These drawings are the property of Davis Kone Architects, P.A. They may not be re-used for any purpose without written permission.  
 Copyright © 2019 by Davis Kone Architects, P.A. All rights reserved.

PE: PAUL J. ROMITI  
 PM: PJR  
 Drawn By: JRE  
 Plot Date: 10/23/2019 3:32:22 PM

**DATE ISSUED**

BID DOCUMENTS  
 10/22/2019

**SHEET TITLE**  
 FIRST FLOOR  
 MECHANICAL RENO  
 ALTERNATE PLAN

**M-8.1**