

FLOOR PLAN GENERAL NOTES:

- REFER TO SHEET M-0.1 FOR GENERAL NOTES.
- DRAIN ALL CHW/HW BACK TO VALVES IN MECHANICAL ROOM 105A. COORDINATE EXISTING VALVE LOCATIONS AND SHUTDOWN WITH OWNER ON FACILITY OFF HOURS.

1 2ND FLOOR MECH RENO PLAN
3/16" = 1'-0"



FLOOR PLAN KEY NOTES:

NOTE: NOT ALL KEY NOTES BELOW ARE APPLICABLE TO THIS SHEET. KEY NOTES SUPPLEMENT INFORMATION FOUND ELSEWHERE IN THE DRAWINGS. SEE SHEET M-0.1 MECHANICAL NOTES, LEGENDS, AND ADDITIONAL REQUIREMENTS.

- 01 DO NOT OBSTRUCT EXISTING OR NEW VAV TERMINAL CONTROLS OR COIL CONTROLS. OFFSET DUCT AS NECESSARY LEAVING A MINIMUM OF 12" CLEAR.
- 02 INSTALL DUCTWORK AS HIGH AS POSSIBLE OVER AND TO THE NEW 2ND FLOOR. ELEVATION SHALL BE A MINIMUM OF 6" ABOVE 2ND FLOOR FINISHED FLOOR.
- 03 INSTALL SUPPLY DUCTWORK TO THE BOTTOM OF EXISTING PIPE CROSSING. OFFSET MAY BE REQUIRED FROM SECOND FLOOR CEILING. DUCTWORK EDGE SHALL BE FLUSH WITH FACE OF NEW SECOND FLOOR. APPROXIMATE ELEVATION OF 10' ABOVE FINISH WEIGHT ROOM FLOOR.
- 04 NEW DUCTWORK CROSSES BETWEEN TWO SETS OF HYDRONIC HW/CHW PIPES.
- 07 OFFSET NEW DUCTWORK TO MEET EXISTING DUCT ELEVATION.

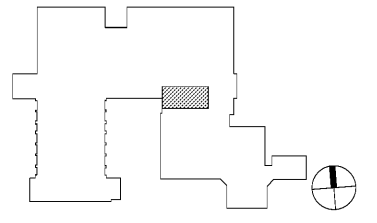
RATED ASSEMBLIES LEGEND:

NOTES: RATINGS ARE NOT SHOWN THROUGH DOORS FOR CLARITY. SEE A-0.1 FOR PARTITION TYPES. SEE LIFE SAFETY PLANS ON T-2.1 AND T-2.2 FOR FULL EXTENT OF RATINGS, INCLUDING HORIZONTAL RATINGS. RATINGS ARE CONTINUOUS AROUND OPENINGS AND OPENINGS ARE TO BE PROTECTED IN ACCORDANCE WITH THE NC STATE BUILDING CODE. PROTECT ALL PENETRATIONS.

- SEE T-SHEETS FOR UL RATINGS AND ADDITIONAL INFORMATION.
- 1-HR RATED FIRE BARRIER
- 2-HR RATED FIRE BARRIER
- SMOKE RESISTANT WALL
- NEW SMOKE RESISTANT WALL

KEY PLAN

SECOND FLOOR = NTS



REVISIONS