

FLOOR PLAN GENERAL NOTES:

- REFER TO SHEET M-0.1 FOR GENERAL NOTES.
- DRAIN ALL CHW/HW BACK TO VALVES IN MECHANICAL ROOM 105A. COORDINATE EXISTING VALVE LOCATIONS AND SHUTDOWN WITH OWNER ON FACILITY OFF HOURS.

1 1ST FLOOR MECH RENO BASE BID PLAN
3/16" = 1'-0"

FLOOR PLAN KEY NOTES:

NOTE: NOT ALL KEY NOTES BELOW ARE APPLICABLE TO THIS SHEET. KEY NOTES SUPPLEMENT INFORMATION FOUND ELSEWHERE IN THE DRAWINGS. SEE SHEET M-0.1 FOR MECHANICAL NOTES, LEGENDS, AND ADDITIONAL REQUIREMENTS.

- 01 DO NOT OBSTRUCT EXISTING OR NEW VAV TERMINAL CONNECTIONS OR FAN COIL CONTROLS. OFFSET DUCT AS NECESSARY LEAVING A MINIMUM OF 12" CLEAR.
- 05 ROUTE CONDENSATE DOWN WITHIN MECHANICAL ROOM AND SPILL TO EXISTING FLOOR DRAIN WITH AIR GAP.
- 06 CONNECT NEW 4" OA DUCT TO EXISTING OA SERVING AREA IN THIS APPROXIMATE LOCATION. PROVIDE BACKDRIFT DAMPER AND BALANCE DAMPER. BALANCE CFM TO MEET O&M SCHEDULE.

RATED ASSEMBLIES LEGEND:

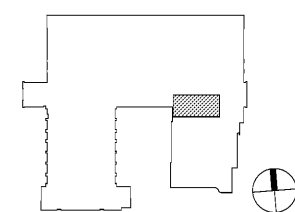
NOTES: RATINGS ARE NOT SHOWN THROUGH DOORS FOR CLARITY. SEE A-0.1 FOR PARTITION TYPES. SEE LIFE SAFETY PLANS ON T-2.1 AND T-2.2 FOR FULL EXTENT OF RATINGS. INCLUDING HORIZONTAL RATINGS. RATINGS ARE CONTINUOUS AROUND OPENINGS AND OPENINGS ARE TO BE PROTECTED IN ACCORDANCE WITH THE NC STATE BUILDING CODE. PROTECT ALL PENETRATIONS.

SEE T-SHEETS FOR UL RATINGS AND ADDITIONAL INFORMATION.

- 1-HR RATED FIRE BARRIER
- 2-HR RATED FIRE BARRIER
- SMOKE RESISTANT WALL
- NEW SMOKE RESISTANT WALL

KEY PLAN

FIRST FLOOR = NTS

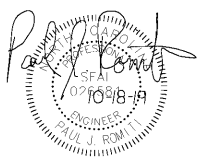


Davis Kone
ARCHITECTS, P.A.
ARCHITECTURE · PLANNING · INTERIORS
505 300 BERLIN ROAD, RALEIGH, NC 27605
919.833.3737 · WWW.DAVISKONE.COM

Sigma
Sigma Engineering Solutions, P.C.
2100 Gateway Center Drive
Suite 307
Morrisville, NC 27559
Tel: 919.660.0900
Fax: 919.542.6933
www.sigmaeng.com
North Carolina License # C-2460
Sigma Project # 19227

**UNCG ATHLETICS
COLEMAN BUILDING
WEIGHT ROOM**
SCO ID No. 19 - 20597 - 01A | Code: 41825 | Item: 304
1408 Walker Ave. Greensboro, NC 27402

SEALS



DKA JOB NUMBER
1915

REVISIONS

These drawings are the property of Davis Kone Architects, P.A. They may not be re-used for any purpose without written permission.
Copyright © 2019 by Davis Kone Architects, P.A. All rights reserved.
PE: PAUL J. ROMITI
PM: PJR
Drawn By: JRE
Plot Date: 10/23/2019 3:31:56 PM

DATE ISSUED

BID DOCUMENTS
10/22/2019

SHEET TITLE
FIRST FLOOR
MECHANICAL RENO
BASE BID PLAN
M-2.1