

C1 2ND FLOOR MECH DEMO PLAN
3/16" = 1'-0"

FLOOR PLAN KEY NOTES:

- NOTE: NOT ALL KEY NOTES BELOW ARE APPLICABLE TO THIS SHEET. KEY NOTES SUPPLEMENT INFORMATION FOUND ELSEWHERE IN THE DRAWINGS. SEE SHEET M-0.0 FOR MECHANICAL GENERAL NOTES, LEGENDS, AND ADDITIONAL REQUIREMENTS.
- 01 UNUSED
 - 02 EXISTING AHU-8 IS TO REMAIN. UPON PROJECT COMPLETION, ALL DUCTS SERVING AREAS OUTSIDE SCOPE OF PROJECT SHALL BE RECONNECTED AND RE-BALANCED TO MEET SPECIFIC AIRFLOW REQUIREMENTS.
 - 03 EXISTING DUCT SERVING SPACE OUTSIDE ROOMS TO REMAIN.
 - 04 DEMOLISH DUCTWORK BASED ON AND INCLUDING ELBOW. REFERENCE NEW WORK PLAN FOR FURTHER DETAILS.
 - 05 DEMOLISH DUCTWORK THROUGH WALL PENETRATION. REFERENCE NEW WORK PLAN FOR FURTHER DETAILS.
 - 06 DEMOLISH ABANDONED AIR DISTRIBUTION APPROXIMATELY 21' AFF. ON COLUMN WALL.
 - 07 DEMOLISH AIR DISTRIBUTION AND DUCTWORK APPROXIMATELY 21'6" AFF.

FLOOR PLAN GENERAL NOTES:

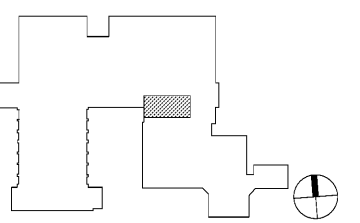
1. REFER TO SHEET M-0.1 FOR GENERAL NOTES.
2. DRAIN ALL CHW/HW BACK TO VALVES IN MECHANICAL ROOM 105A. COORDINATE EXISTING VALVE LOCATIONS AND SHUTDOWN WITH OWNER ON FACILITY OFF HOURS.

RATED ASSEMBLIES LEGEND:

- NOTES: RATINGS ARE NOT SHOWN THROUGH DOORS FOR CLARITY. SEE A-0.1 FOR PARTITION TYPES. SEE LIFE SAFETY PLANS ON T-2.1 AND T-2.2 FOR FULL EXTENT OF RATINGS, INCLUDING HORIZONTAL RATINGS. RATINGS ARE CONTINUOUS AROUND OPENINGS AND OPENINGS ARE TO BE PROTECTED IN ACCORDANCE WITH THE NC STATE BUILDING CODE. PROTECT ALL PENETRATIONS.
- SEE T-SHEETS FOR UL RATINGS AND ADDITIONAL INFORMATION.
- [Symbol] 1-HR RATED FIRE BARRIER
 - [Symbol] 2-HR RATED FIRE BARRIER
 - [Symbol] SMOKE RESISTANT WALL
 - [Symbol] NEW SMOKE RESISTANT WALL

KEY PLAN

SECOND FLOOR = NTS

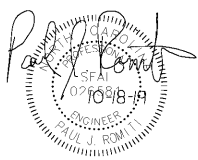


Davis Kone
ARCHITECTS, P.A.
ARCHITECTURE · PLANNING · INTERIORS
503 300 0800 / 503 300 0801
919 333 3737 · WWW.DAVISKONE.COM

Sigma
Sigma Engineering Solutions, P.C.
2100 Gateway Center Drive
Suite 307
Morrisville, NC 27560
Tel: 919.660.2900
Fax: 919.660.2903
www.sigmainc.com
North Carolina License # C-23680
Sigma Project # 19227

**UNCG ATHLETICS
COLEMAN BUILDING
WEIGHT ROOM**
SCO ID No. 19 - 20597 - 01A | Code: 41825 | Item: 304
1408 Walker Ave. Greensboro, NC 27402

SEALS



DKA JOB NUMBER
1915

REVISIONS

These drawings are the property of Davis Kone Architects, P.A. They may not be re-used for any purpose without written permission.
Copyright © 2019 by Davis Kone Architects, P.A. All rights reserved.

PE: PAUL J. ROMITI
PM: PJR
Drawn By: JRE
Plot Date: 10/23/2019 3:31:49 PM

DATE ISSUED

BID DOCUMENTS
10/22/2019

SHEET TITLE
SECOND FLOOR
MECHANICAL DEMO
PLAN
M-1.2