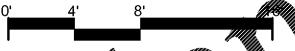


C1 1ST FLOOR MECH DEMO PLAN
3/16" = 1'-0"



FLOOR PLAN KEY NOTES:

NOTE: NOT ALL KEY NOTES BELOW ARE APPLICABLE TO THIS SHEET. KEY NOTES SUPPLEMENT INFORMATION FOUND ELSEWHERE IN THE DRAWINGS. SEE SHEET M-0.1 FOR MECHANICAL GENERAL NOTES, LEGENDS, AND ADDITIONAL REQUIREMENTS.

- 01 UNUSED
- 02 EXISTING AHU-8 IS TO REMAIN. UPON PROJECT COMPLETION, ALL DUCTS SERVING AREAS OUTSIDE SCOPE OF PROJECT SHALL BE RECONNECTED AND RE-BALANCED TO MEET SPECIFIED AIRFLOW.
- 03 EXISTING DUCT SERVING SPACE OUTSIDE AREA OF WORK TO REMAIN.
- 04 DEMOLISH DUCTWORK BACK TO AND INCLUDING ELBOW. REFERENCE NEW WORK PLAN FOR FURTHER DETAILS.
- 05 DEMOLISH DUCTWORK THROUGH WALL PENETRATION. REFERENCE NEW WORK PLAN FOR FURTHER DETAILS.
- 06 DEMOLISH ABANDONED AIR DISTRIBUTION APPROXIMATELY 21' AFF. ON COLUMN OR WALL.
- 07 DEMOLISH AIR DISTRIBUTION AND DUCTWORK APPROXIMATELY 216" AFF.

FLOOR PLAN GENERAL NOTES:

1. REFER TO SHEET M-0.1 FOR GENERAL NOTES.
2. DRAIN ALL CHW/HW BACK TO VALVES IN MECHANICAL ROOM 105A. COORDINATE EXISTING VALVE LOCATIONS AND SHUTDOWN WITH OWNER ON FACILITY OFF HOURS.

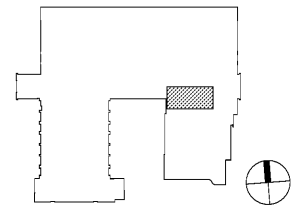
RATED ASSEMBLIES LEGEND:

NOTES: RATINGS ARE NOT SHOWN THROUGH DOORS FOR CLARITY. SEE A-0.1 FOR PARTITION TYPES. SEE LIFE SAFETY PLANS ON T-2.1 AND T-2.2 FOR FULL EXTENT OF RATINGS, INCLUDING HORIZONTAL RATINGS. RATINGS ARE CONTINUOUS AROUND OPENINGS AND OPENINGS ARE TO BE PROTECTED IN ACCORDANCE WITH THE NC STATE BUILDING CODE. PROTECT ALL PENETRATIONS.

- SEE T-SHEETS FOR UL RATINGS AND ADDITIONAL INFORMATION.
- 1-HR RATED FIRE BARRIER
- 2-HR RATED FIRE BARRIER
- SMOKE RESISTANT WALL
- NEW SMOKE RESISTANT WALL

KEY PLAN

FIRST FLOOR = NTS

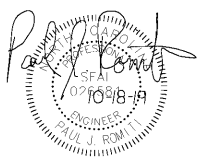


Davis Kone
ARCHITECTS, P.A.
ARCHITECTURE · PLANNING · INTERIORS
503 300 0800 / 503 300 0801
503 300 0802 / 503 300 0803
www.davis-kone.com
North Carolina License # 022460
Sigma Project # 19227

Sigma
Sigma Engineering Solutions, P.C.
2100 Gateway Center Drive
Suite 307
Morrisville, NC 27560
Tel: 919.660.0500
Fax: 919.660.0503
www.sigma-engineering.com
North Carolina License # 022460
Sigma Project # 19227

**UNCG ATHLETICS
COLEMAN BUILDING
WEIGHT ROOM**
SCO ID No. 19 - 20597 - 01A | Code: 41825 | Item: 304
1408 Walker Ave. Greensboro, NC 27402

SEALS



DKA JOB NUMBER
1915

REVISIONS

These drawings are the property of Davis Kone Architects, P.A. They may not be reused for any purpose without written permission.
Copyright © 2019 by Davis Kone Architects, P.A. All rights reserved.

PE: PAUL J. ROMITI
PM: PJR
Drawn By: JRE
Plot Date: 10/23/2019 3:31:42 PM

DATE ISSUED

BID DOCUMENTS
10/22/2019

SHEET TITLE
FIRST FLOOR
MECHANICAL DEMO
PLAN
M-1.1