

1 1ST FLOOR FIRE DEMO ALTERNATE PLAN
3/16" = 1'-0"

FLOOR PLAN GENERAL NOTES:

1. REFER TO SHEET FP-0.1 FOR GENERAL NOTES.

FLOOR PLAN KEY NOTES:

NOTE: NOT ALL KEY NOTES BELOW ARE APPLICABLE TO THIS SHEET. KEY NOTES SUPPLEMENT INFORMATION FOUND ELSEWHERE IN THE DRAWINGS. SEE SHEET FP-0.1 FOR FIRE PROTECTION GENERAL NOTES, LEGENDS, AND ADDITIONAL REQUIREMENTS.

- 01 EXISTING SPRINKLER PIPE BRANCH/MAIN CONTINUES TO EXISTING SPRINKLERS. REFERENCE EXISTING AS-BUILT DOCUMENTS FOR CONTINUATION.
- 02 EXISTING SPRINKLER PIPE MAIN CONTINUES TO EXISTING FLOOR CONTROL ASSEMBLY. REFERENCE FP1.1 FOR CONTINUATION.
- 03 DEMOLISH SPRINKLER HEAD BACK AT POINT OF DISCONNECT SHOWN. REFERENCE NEW WORK PLAN FOR LOCATION OF RE-CONNECTION.
- 04 RESTROOM FOOTPRINT IS CHANGING. SPRINKLER CONTRACTOR SHALL RE-ARRANGE AND REPLACE HEADS TO COMPLY WITH SPRINKLER SPACING REQUIREMENTS FOR LIGHT HAZARD OUTLINED IN NFPA13 AS NECESSARY. TWO SPRINKLERS INDICATED OVER GYMNASIUM BLEACHERS SHALL FIT WITHIN REVISED RESTROOM FOOTPRINT TO COVER NEW RESTROOM FOOTPRINT.

RATED ASSEMBLIES LEGEND:

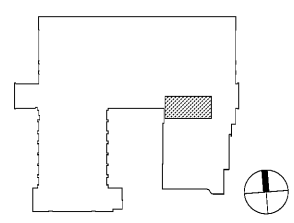
NOTES: RATINGS ARE NOT SHOWN THROUGH DOORS FOR CLARITY. SEE A-0.1 FOR PARTITION TYPES. SEE LIFE SAFETY PLANS ON T-2.1 AND T-2.2 FOR FULL EXTENT OF RATINGS, INCLUDING HORIZONTAL RATINGS. RATINGS ARE CONTINUOUS AROUND OPENINGS AND OPENINGS ARE TO BE PROTECTED IN ACCORDANCE WITH THE NC STATE BUILDING CODE. PROTECT ALL PENETRATIONS.

SEE T-SHEETS FOR UL RATINGS AND ADDITIONAL INFORMATION.

- 1-HR RATED FIRE BARRIER
- 2-HR RATED FIRE BARRIER
- SMOKE RESISTANT WALL
- NEW SMOKE RESISTANT WALL

KEY PLAN

FIRST FLOOR = NTS

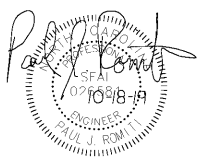


Davis Kone
ARCHITECTS, P.A.
ARCHITECTURE · PLANNING · INTERIORS
505 300 BERLIN ROAD, RALEIGH, NC 27605
919.833.3737 · WWW.DAVISKONE.COM

Sigma
Sigma Engineering Solutions, P.C.
2100 Gateway Center Drive
Suite 307
Morrisville, NC 27560
Tel: 919.662.0500
Fax: 919.662.6500
www.sigmaeng.com
North Carolina License # C-24680
Sigma Project # 19027

**UNCG ATHLETICS
COLEMAN BUILDING
WEIGHT ROOM**
SCO ID No. 19 - 20597 - 01A | Code: 41825 | Item: 304
1408 Walker Ave. Greensboro, NC 27402

SEALS



DKA JOB NUMBER
1915

REVISIONS

These drawings are the property of Davis Kone Architects, P.A. They may not be reused for any purpose without written permission.
Copyright © 2019 by Davis Kone Architects, P.A. All rights reserved.

PE: PAUL J. ROMITI
PM: PJR
Drawn By: JRE
Plot Date: 10/23/2019 3:30:54 PM

DATE ISSUED

BID DOCUMENTS
10/22/2019

SHEET TITLE
FIRST FLOOR FIRE PROTECTION DEMO ALTERNATE PLAN

FP-8.1