

SEALS



DKA JOB NUMBER

1915

REVISIONS

NO.	DATE	DESCRIPTION

These drawings are the property of Davis Kone Architects, P.A. They may not be reused for any purpose without written permission. Copyright © 2019 by Davis Kone Architects, P.A. All rights reserved.

PE:
PM:
Drawn By:
Plot Date: 10/18/2019 4:42:27 PM

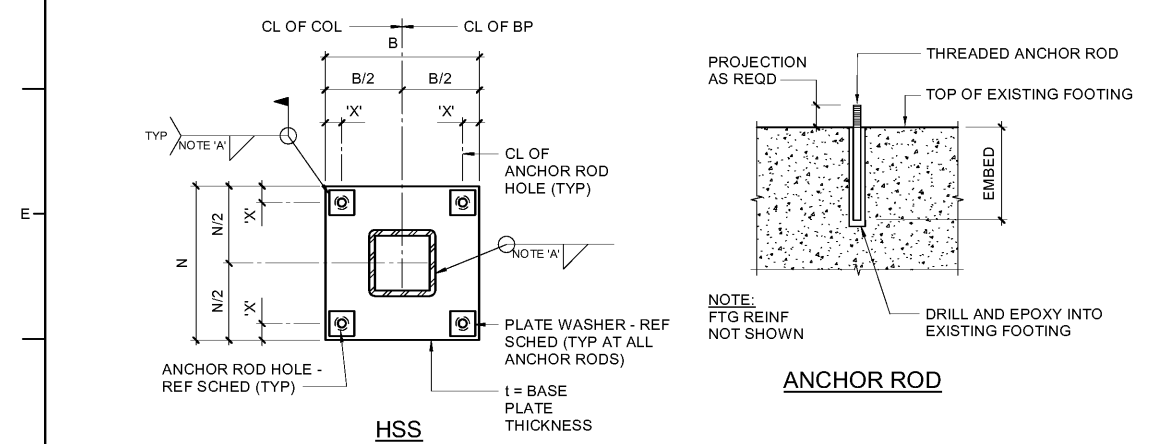
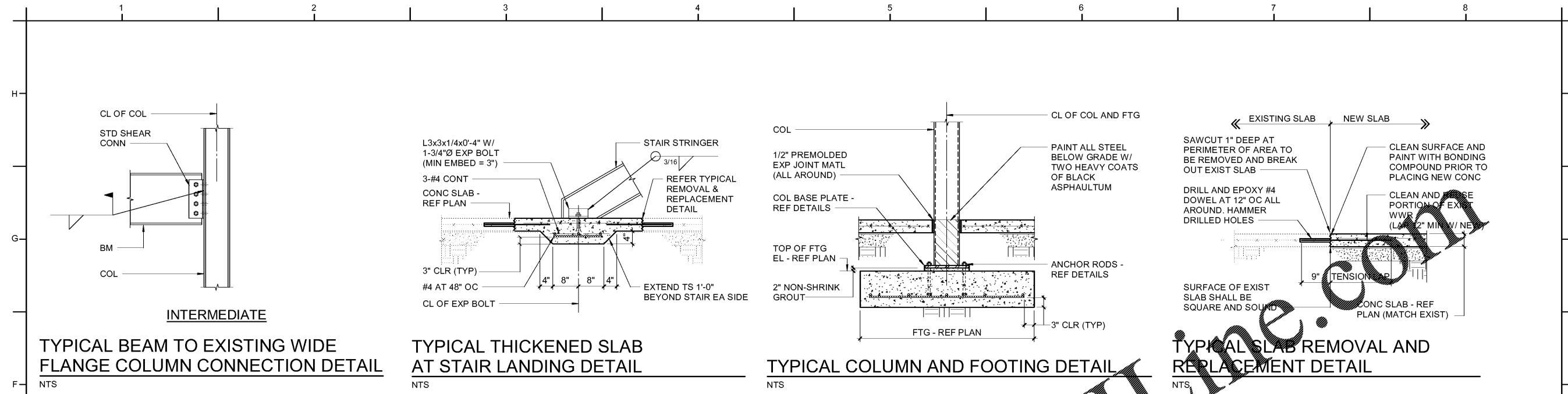
DATE ISSUED

BID DOCUMENTS
10/22/19

SHEET TITLE

TYPICAL DETAILS

S501



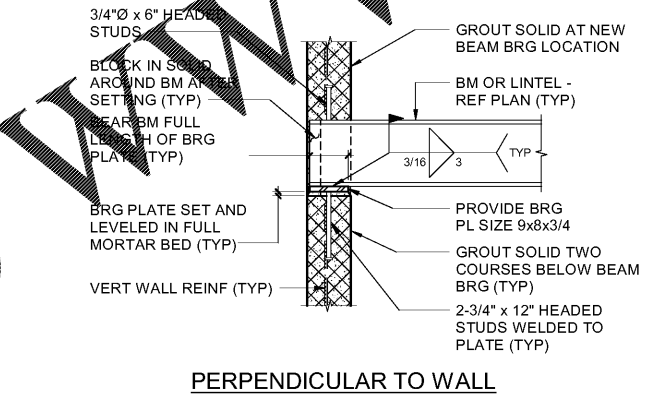
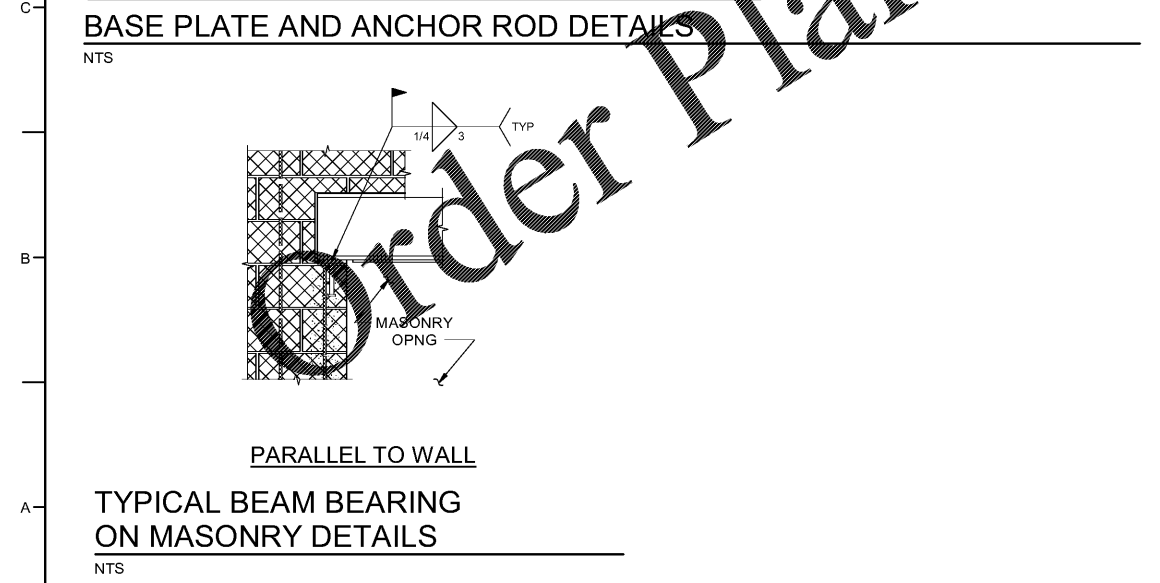
COLUMN BASE PLATE SCHEDULE

MARK	COLUMN BASE PLATE SIZE				ANCHOR RODS			REMARKS	
	B	t	N	HOLE DIAMETER	X' = EDGE DISTANCE	DIAMETER	QUANTITY		
HSS6x6x1/4	11"	1"	11"	1 5/16"	1.5	3/4"	4"	9"	-

NOTE:
A. PROVIDE MINIMUM SIZE WELD PER AISC TABLE J2.4.
B. AT THE GENERAL CONTRACTOR'S OPTION, WHEN BASE PLATES ARE LESS THAN 1 1/4" THICK, USE 1 1/16" PUNCHED HOLES FOR 3/4" RODS WITH STD ASTM F844 WASHERS IN LIEU OF PLATE WASHERS.

PLATE WASHER SCHEDULE

ANCHOR ROD	SIZE	HOLE DIAMETER	THICKNESS
3/4"Ø	2" SQ	1 5/16"	1"



WWW.LDILINE.COM

Order Plans @