

**C1 2ND FLOOR - FINISHES PLAN**  
3/16" = 1'-0"

**FINISHES KEY NOTES:**

NOTE: NOT ALL KEY NOTES BELOW ARE APPLICABLE TO THIS SHEET. KEY NOTES SUPPLEMENT INFORMATION FOUND ELSEWHERE IN THE DRAWINGS. SEE SHEET I-0.0 FOR FINISH LEGEND, DETAILS, AND ADDITIONAL REQUIREMENTS. SEE A-8.1 THROUGH A-8.4 AND I-8.1 THROUGH I-8.2 FOR ALTERNATE PLANS.

- 01 WALL BASE, FOR DETAIL REFER TO C1 / I-1.0
- 02 METAL THRESHOLD AT DOORWAY [RS1]
- 03 RUBBER THRESHOLD [RS2]
- 04 PATCH VCT TO MATCH EXISTING FINISHED BY HATCH
- 05 PAINT ALL EXPOSED STEEL PARTS ON 2ND FLOOR INCLUDING RAILINGS, COLUMNS, BEAMS, BRINGERS, ETC.
- 06 FLOOR HATCH TO CONTINUE UNDER COUNTERTOP. (ALTERNATE ONLY)
- 07 PATCH CERAMIC FLOOR TO MATCH EXISTING INCLUDING 2"x2" MOSAIC COVE BASE.
- 08 CUSTOM LOGO LAZER CUT INTO THE ATHLETIC RUBBER FLOORING ARF. (ALTERNATE ONLY)

**RATED ASSEMBLIES LEGEND:**

NOTES: RATINGS ARE NOT SHOWN THROUGH DOORS FOR CLARITY. SEE A-0.0 FOR PARTITION TYPES. SEE LIFE SAFETY PLANS ON T-2.1 - T-2.3 FOR FULL EXTENT OF RATINGS, INCLUDING HORIZONTAL RATINGS. RATINGS ARE CONTINUOUS AROUND OPENINGS AND OPENINGS ARE TO BE PROTECTED IN ACCORDANCE WITH THE NC STATE BUILDING CODE. PROTECT ALL PENETRATIONS.

- EXISTING 1-HR RATED FIRE BARRIER
- EXISTING 2-HR RATED FIRE BARRIER
- EXISTING SMOKE RESISTANT WALL
- NEW SMOKE RESISTANT WALL

**FINISHES PLAN NOTES:**

1. SEE INTERIOR ELEVATIONS AND DETAILS FOR LOCATION OF CASEWORK AND WALL FINISH SELECTIONS NOT SHOWN ON PLAN.
2. SEE A-0.0 FOR GENERAL PLAN & PARTITION NOTES.
3. REFER TO A-0.0 FOR PARTITION CONSTRUCTION TYPE.
4. SEE I-1.0 FOR INTERIOR FINISHES LEGEND AND ADDITIONAL FINISHES REQUIREMENTS.
5. WHERE PAINT IS INDICATED ON LEGEND, PROVIDE THE FOLLOWING:
  - FINISH LOCATION
  - EGGSHELL GWB WALLS, UON
  - SEMI-GLOSS MASONRY WALLS, UON
  - SEMI-GLOSS INTERIOR FRAMES
  - FLAT GWB CEILINGS
6. PAINT COLORS PROVIDED IN FINISHES LEGEND ARE FOR COLOR MATCH ONLY.
7. ALL METAL COMPONENTS FOR MEZZANINE TO BE PAINTED P.
8. RUBBER ATHLETIC FLOORING TO BE INSTALLED BY OWNER. GC TO COORDINATE INSTALLATION WITH OWNER'S VENDOR. 1" THICK. 1" THICK AND 2ND FLOOR IS TO BE 3/8" THICK.

**FINISHES SYMBOL LEGEND**

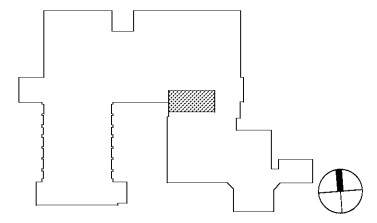
- FINISHES
- DPT FLOORING
  - PT B WALL UON BASEUON
  - PT ACCENT PAINT
  - ST A SIGN TYPE

**FINISHES KEY:**

- CARPET
- LUXURY VINYL TILE
- CONCRETE
- 2"x2" CERAMIC TILE
- ARF 1
- ARF 2
- TURF

**KEY PLAN**

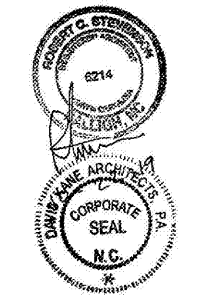
SECOND FLOOR = NTS



**PROJECT INFORMATION**

**UNCG ATHLETICS  
COLEMAN BUILDING  
WEIGHT ROOM**  
SCO ID No. 19-20597-01A | Code: 41825 Item: 304  
1408 Walker Ave., Greensboro, NC 27402

**SEALS**



**DKA JOB NUMBER**

1915

**REVISIONS**

NO.	DATE	DESCRIPTION

These drawings are the property of Davis Kone Architects, P.A. They may not be used for any purpose without written permission. Copyright © 2019 by Davis Kone Architects, P.A. All rights reserved.

PA: RS  
PM: SB  
Drawn By: SB  
Plot Date: 10/23/2019 4:24:42 PM

**DATE ISSUED**

BID DOCUMENTS  
10/22/19

**SHEET TITLE**

INTERIOR FINISHES  
2ND FLOOR PLAN

**I-1.2**