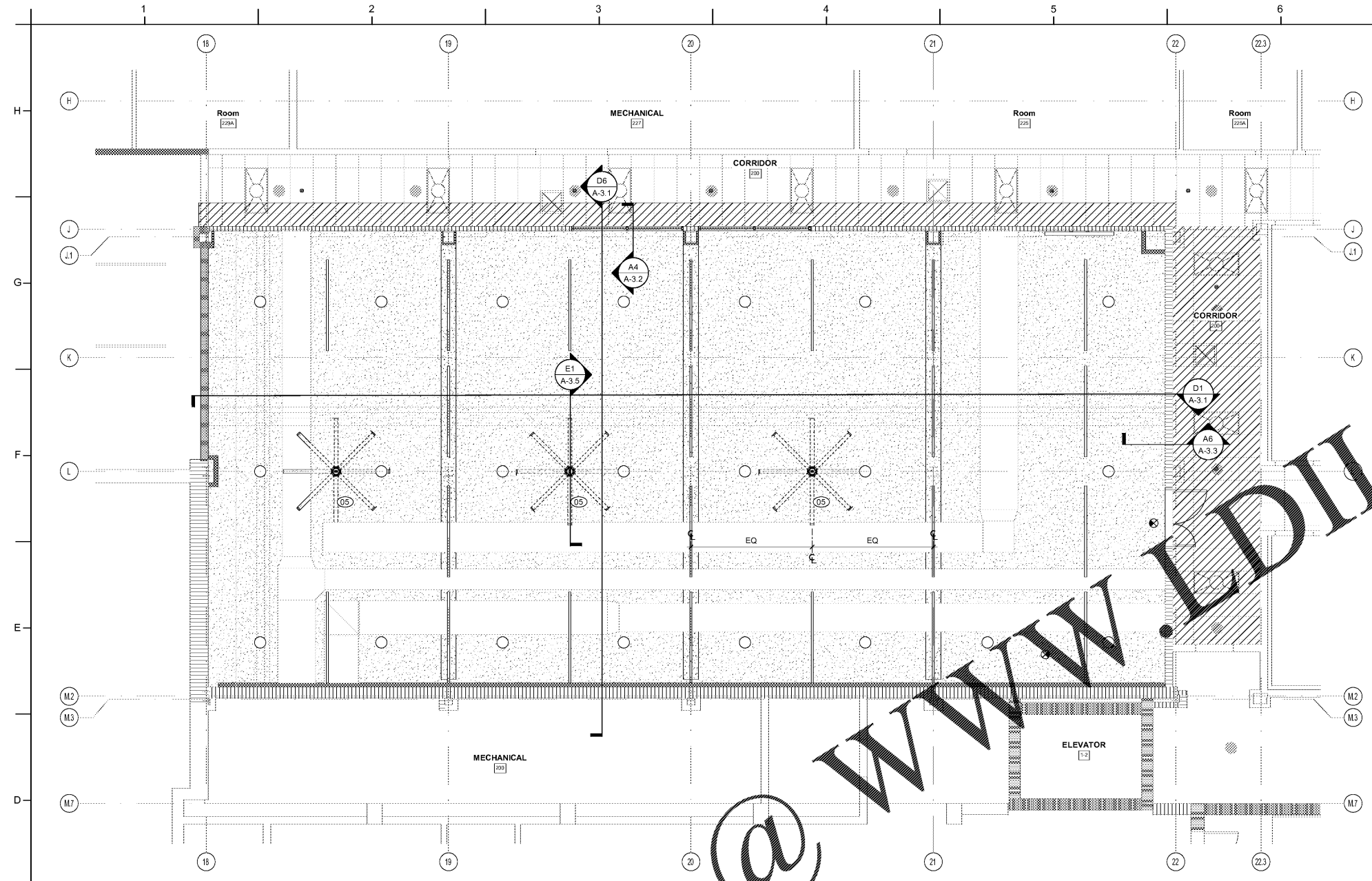


**REFLECTED CEILING PLAN GENERAL NOTES:**

1. CEILING GRIDS TO BE CENTERED IN ROOM AS SHOWN, UNLESS DIMENSIONED OTHERWISE.
2. DOUBLE CEILING TRACK AT THE EDGE OF ANY LAY-IN AREAS IS NOT ACCEPTABLE. PROVIDE A 2x4" TILE CUT TO FIT THE LARGER OPENING WHERE A STRIP OF TILE LESS THAN 2 1/2" IN EITHER DIRECTION WOULD HAVE TO BE USED, TYP.
3. MECHANICAL, ELECTRICAL, FIRE PROTECTION, AND AV COMPONENTS ARE SHOWN FOR COORDINATION PURPOSES ONLY. SEE PLUMBING, ELECTRICAL, MECHANICAL, AND FIRE PROTECTION DRAWINGS FOR ADDITIONAL REQUIREMENTS.
4. CONTRACTOR IS RESPONSIBLE FOR COORDINATING INSTALLATION OF MECHANICAL, FIRE PROTECTION, ELECTRICAL, AND PLUMBING WORK ABOVE CEILING, IN ORDER TO PROVIDE FINISHED CEILINGS AT HEIGHTS REQUIRED ON CEILING PLAN.
5. PRIME AND PAINT ALL NON-GALVANIZED STEEL LINTELS THAT ARE TO REMAIN EXPOSED.
6. SEE INTERIOR FINISHES SCHEDULE AND INTERIOR FINISHES PLANS T-SHEETS FOR ADDITIONAL CEILING INFORMATION AND REQUIREMENTS.
7. PROVIDE CONTROL JOINTS IN GYPSUM BOARD CEILING CONSTRUCTIONS AS INDICATED, WHERE NOT SHOWN, PROVIDE MAXIMUM SPACING BETWEEN JOINTS OF 30'-0". VERIFY FINAL CONTROL JOINT LOCATIONS WITH CONTRACTOR PRIOR TO STARTING WORK, WHETHER OR NOT INDICATED ON THE DRAWING.
8. ALL GWB CONTROL JOINTS ARE TO RUN HORIZONTALLY AS SHOWN ON REFLECTED CEILING PLANS AND VERTICALLY UP THE FACE OF THE BULKHEAD/WALL.
9. CENTER PENETRATIONS IN ACOUSTICAL CEILING SYSTEMS WITHIN INDIVIDUAL CEILING PANELS, SUCH AS SPRINKLER HEADS, DIFFUSERS, LIGHT FIXTURES, ETC. UON.
10. PAINT ALL EXPOSED GWB CEILINGS AND BULKHEADS PT-2.
11. SUBMIT COORDINATION DRAWINGS AND LAYOUT FOR APPROVAL IN ALL AREAS WITH EXPOSED STRUCTURE PRIOR TO INSTALLATION.
12. AUTOMATIC SPRINKLER DESIGN BY PERFORMANCE SPECIFICATION. SPRINKLER HEADS SHOWN IN AREAS WITH AESTHETIC OR ADDITIONAL REQUIREMENTS COORDINATION. CONTRACTOR RESPONSIBLE FOR FULL RCP COORDINATION.



**C1 2ND FLOOR ALTERNATE REFLECTED CEILING PLAN**  
3/16" = 1'-0"

**REFLECTED CEILING PLAN KEY NOTES:**

NOTE: NOT ALL KEY NOTES BELOW ARE APPLICABLE TO THIS SHEET. KEY NOTES SUPPLEMENT INFORMATION FOUND ELSEWHERE IN THE DRAWINGS. SEE SHEET A-0.0 FOR FLOOR PLAN GENERAL NOTES, PARTITION GENERAL NOTES, LEGENDS, AND ADDITIONAL REQUIREMENTS. SEE A-8.1 THROUGH A-8.4 AND I-8.1 THROUGH I-8.2 FOR ALTERNATE PLANS.

- 01 EXISTING ACT CEILING TO REMAIN.
- 02 LINEAR LIGHT FIXTURE. SEE ELECTRICAL DRAWINGS FOR ADDITIONAL REQUIREMENTS.
- 03 MECHANICAL DUCT. SEE MECHANICAL DRAWINGS FOR ADDITIONAL REQUIREMENTS.
- 04 NEW SUSPENDED ACoustIC CEILING WITH METAL TRIM.
- 05 CEILING FAN NOT PROVIDED BY OWNER. SEE DETAIL E1/A-3.5 FOR ADDITIONAL REQUIREMENTS FOR FAN AND CEILING FAN INSTALLATION.
- 06 PATCH CEILING AND REINSTATE ALL SALVAGED ACT. REPLACED DAMAGED TILES WITH PATCHING ACT.
- 07 PROVIDE INTUMESCENT FIREPROOFING PER UL DETAIL N640 AT 2ND LEVEL BEAMS, TYPICAL.
- 08 PATCH CMU WALL PER DETAILS ON A-3.4 AT NEW DUCT PENETRATION LOCATION. SEE MECHANICAL DRAWINGS FOR ADDITIONAL REQUIREMENTS.
- 09 PATCH CMU WALL PER DETAILS ON A-3.4.
- 10 PATCH TOP OF CMU WALL PER DETAIL A7/A-3.2.
- 11 GWB BULKHEAD AROUND EXISTING BEAM PER DETAIL G7/A-3.5.
- 12 UNDER CABINET LIGHTING. SEE XX FOR ADDITIONAL REQUIREMENTS.

**REFLECTED CEILING PLAN SYMBOL LEGEND**

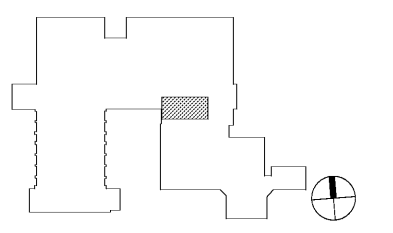
<b>CEILING TAG</b> 28'-10" → CEILING HEIGHT ABOVE FINISH FLOOR	<b>RECESSED / SUSPENDED LIGHT FIXTURE</b> LINEAR PENDANT 2'x2' CAN LIGHT	<b>CEILING MOUNTED SMOKE DETECTOR</b> CEILING MOUNTED HEAT DETECTOR
<b>SPOT ELEVATION</b> 0'-0"	<b>MECHANICAL AIR SUPPLY DIFFUSER</b>	<b>WALL MOUNTED FIRE ALARM AUDIO/VISUAL DEVICE</b>
<b>GYB BOARD CEILING</b> REFER TO PLAN FOR SUSPENSION TYPE	<b>MECHANICAL EXHAUST REGISTER</b>	<b>NEW CONCEALED PENDANT SPRINKLER HEAD</b>
<b>ACOUSTIC CEILING TILE: 2'x2'</b>	<b>MECHANICAL RETURN REGISTER</b>	<b>NEW UPRIGHT SPRINKLER HEAD</b>
<b>UNDER CABINET LIGHTING</b>	<b>EXIT LIGHT FIXTURE</b> EXIT DIRECTIONAL ARROW	<b>EXISTING CONCEALED PENDANT SPRINKLER</b>
	<b>CEILING MOUNTED ELECTRICAL OUTLET</b>	<b>EXISTING UPRIGHT SPRINKLER HEAD</b>
	<b>CONTROL JOINT</b>	<b>WALL MOUNTED FIRE ALARM VISUAL DEVICE</b>

**RATED ASSEMBLIES LEGEND:**

NOTES: RATINGS ARE NOT SHOWN THROUGH DOORS FOR CLARITY. SEE A-0.0 FOR PARTITION TYPES. SEE LIFE SAFETY PLANS ON T-2.1 - T-2.3 FOR FULL EXTENT OF RATINGS, INCLUDING HORIZONTAL RATINGS. RATINGS ARE CONTINUOUS AROUND OPENINGS AND OPENINGS ARE TO BE PROTECTED IN ACCORDANCE WITH THE NC STATE BUILDING CODE. PROTECT ALL PENETRATIONS.

- SEE T-SHEETS FOR UL ASSEMBLIES AND ADDITIONAL INFORMATION.
- EXISTING 1-HR RATED FIRE BARRIER
- EXISTING 2-HR RATED FIRE BARRIER
- EXISTING SMOKE RESISTANT WALL
- NEW SMOKE RESISTANT WALL

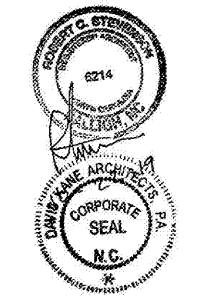
**KEY PLAN**  
SECOND FLOOR = NTS



**PROJECT INFORMATION**

**UNCG ATHLETICS  
COLEMAN BUILDING  
WEIGHT ROOM**  
SCO ID No. 19-20597-01A | Code: 41825 Item: 304  
1408 Walker Ave., Greensboro, NC 27402

**SEALS**



**DKA JOB NUMBER**

1915

**REVISIONS**

NO.	DESCRIPTION

These drawings are the property of Davis Kone Architects, P.A. They may not be re-used for any purpose without written permission. Copyright © 2019 by Davis Kone Architects, P.A. All rights reserved.

PA: RS  
PM: SB  
Drawn By: JW  
Plot Date: 10/23/2019 4:12:15 PM

**DATE ISSUED**

BID DOCUMENTS  
10/22/19

**SHEET TITLE**

SECOND FLOOR  
ALTERNATE RCP

**A-8.4**