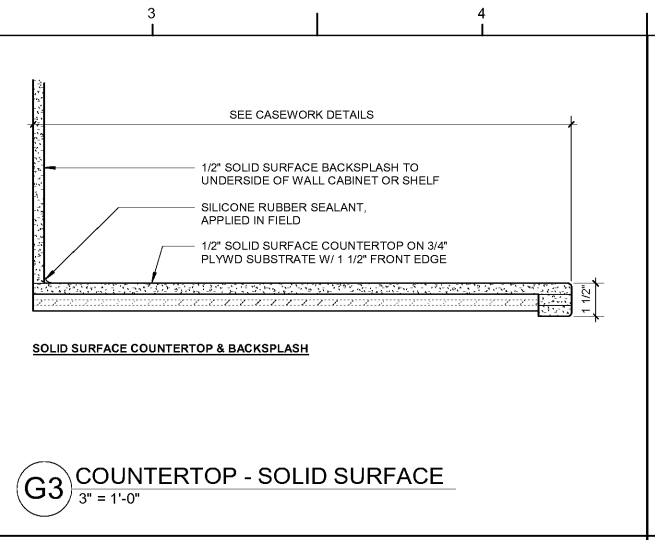
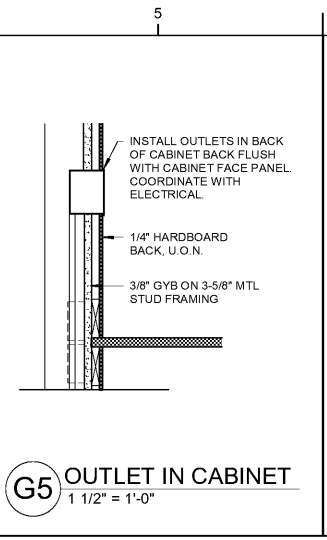


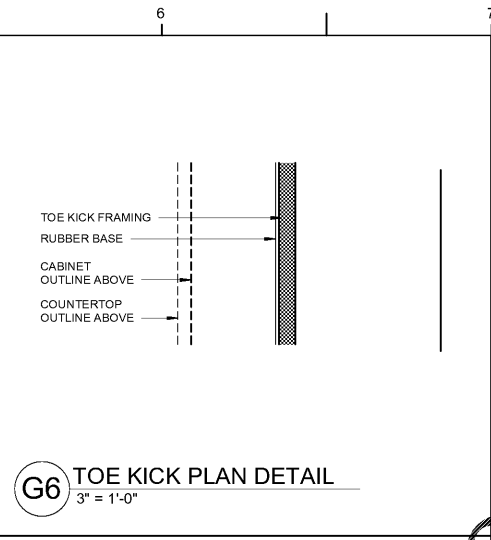
D1 FULL HEIGHT WALL CABINET
1 1/2" = 1'-0"



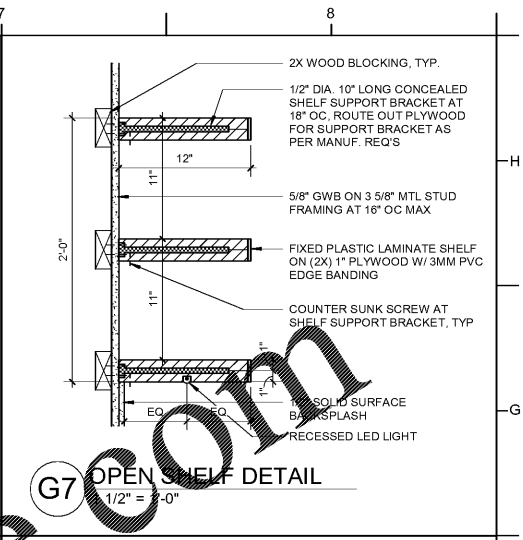
G3 COUNTERTOP - SOLID SURFACE
3" = 1'-0"



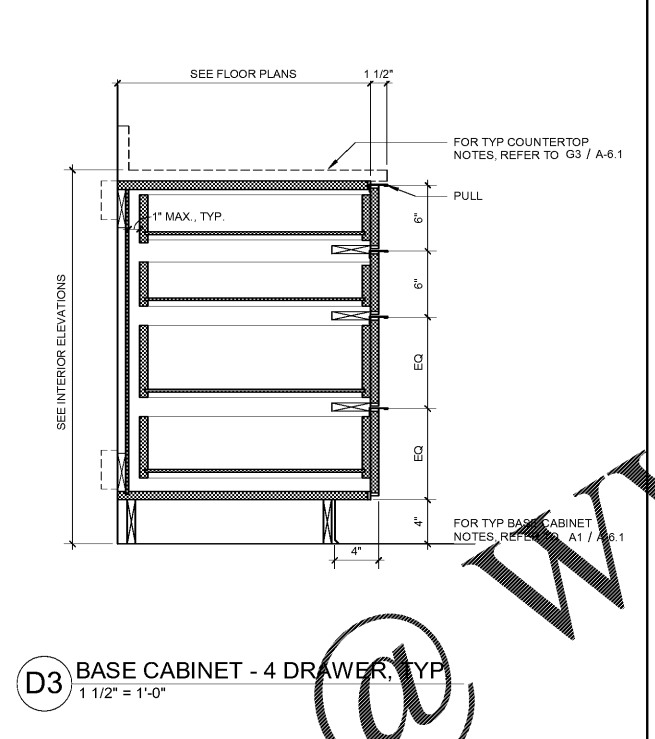
G5 OUTLET IN CABINET
1 1/2" = 1'-0"



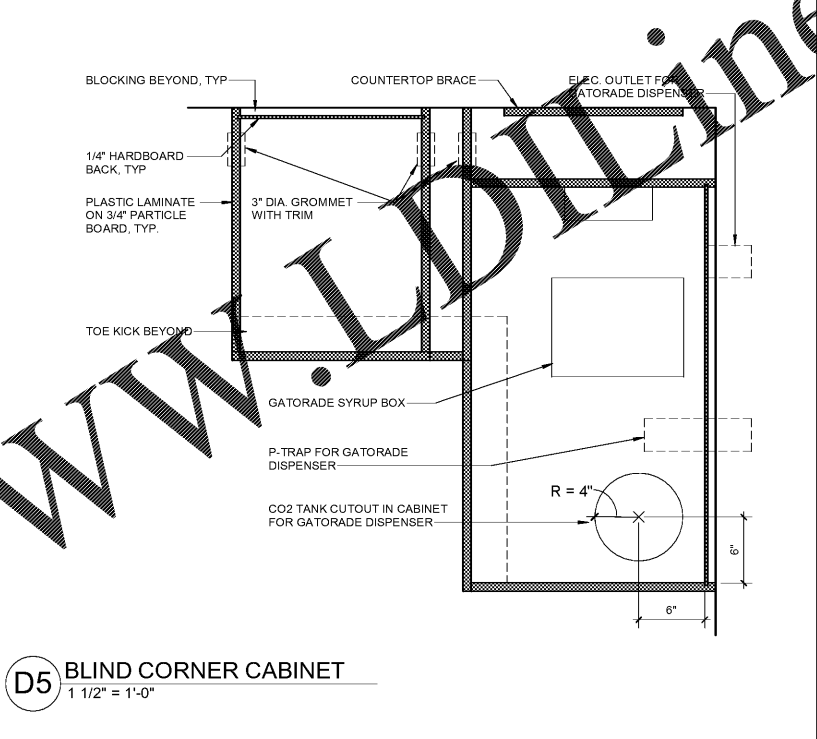
G6 TOE KICK PLAN DETAIL
3" = 1'-0"



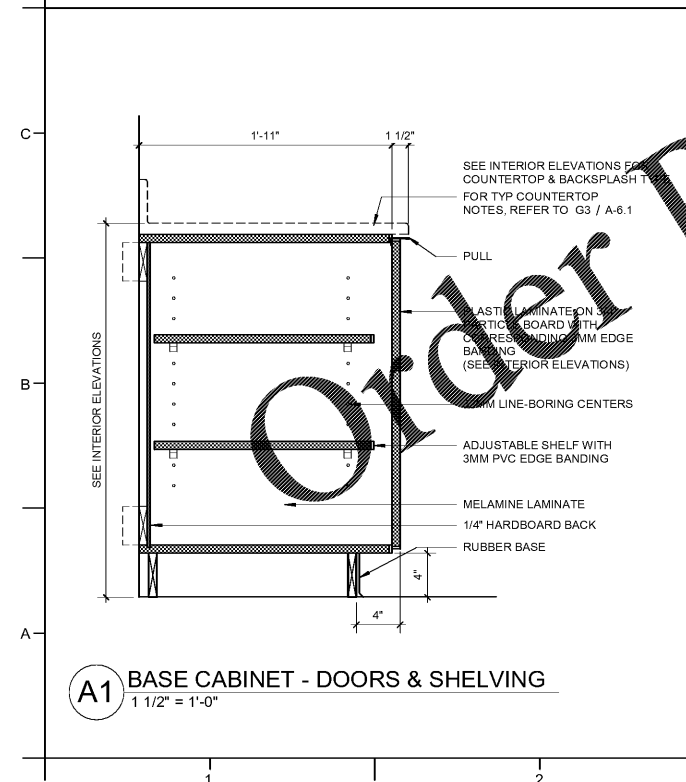
G7 OPEN SHELF DETAIL
1/2" = 1'-0"



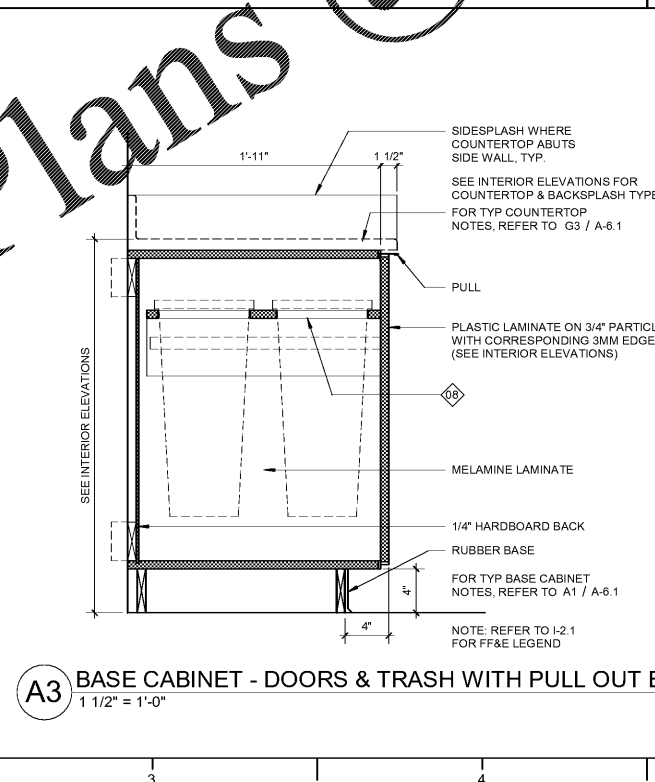
D3 BASE CABINET - 4 DRAWER, TYP
1 1/2" = 1'-0"



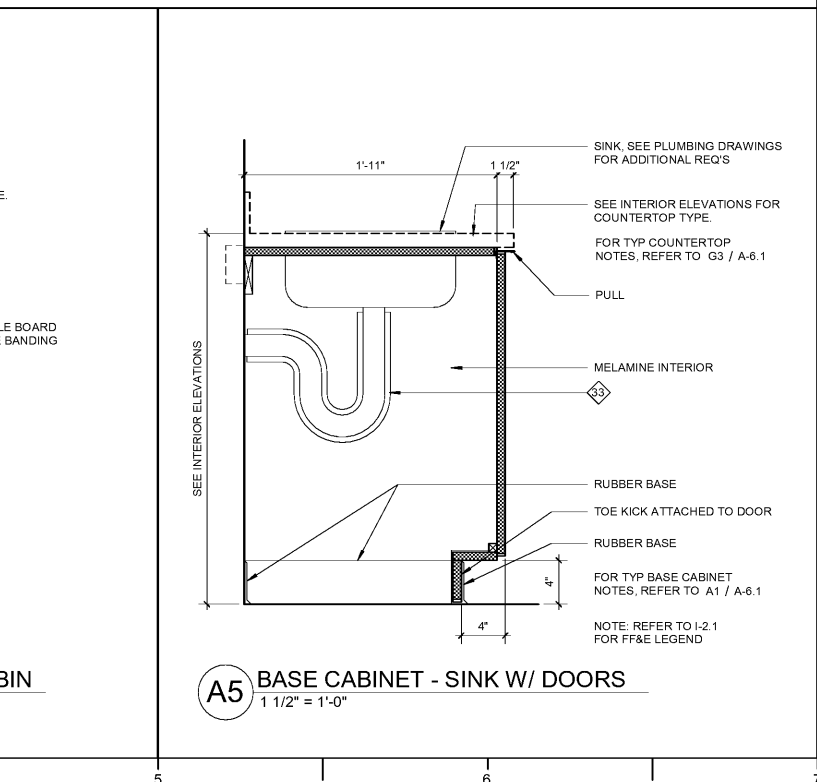
D5 BLIND CORNER CABINET
1 1/2" = 1'-0"



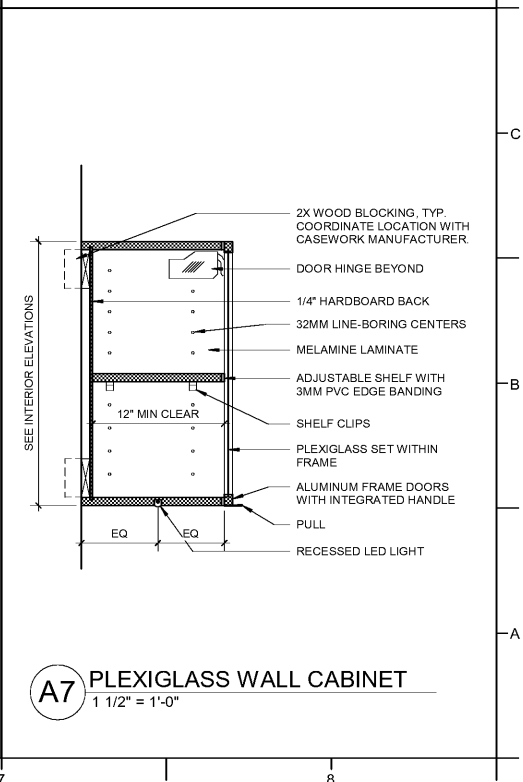
A1 BASE CABINET - DOORS & SHELVING
1 1/2" = 1'-0"



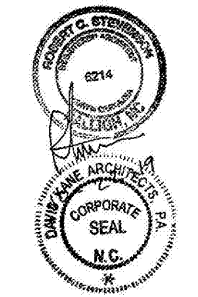
A3 BASE CABINET - DOORS & TRASH WITH PULL OUT BIN
1 1/2" = 1'-0"



A5 BASE CABINET - SINK W/ DOORS
1 1/2" = 1'-0"



A7 PLEXIGLASS WALL CABINET
1 1/2" = 1'-0"



NO.	DATE	DESCRIPTION

These drawings are the property of Davis Kone Architects, P.A. They may not be re-used for any purpose without written permission. Copyright © 2019 by Davis Kone Architects, P.A. All rights reserved.

PA: RS
PM: SB
Drawn By: GM
Plot Date: 10/23/2019 4:07:59 PM