

FLOOR PLAN GENERAL NOTES:

- DO NOT SCALE DRAWINGS. REFER DIMENSION QUESTIONS TO ARCHITECT FOR INTERPRETATION.
- SEE SHEET A-0.0 FOR INTERIOR PARTITION LEGEND AND NOTES.
- ALL DIMENSIONS TO FACE OF METAL STUD, FACE OF MASONRY, FACE OF CONCRETE, OR COLUMN CENTERLINE, UON.
- SEE SHEET I-2.1 & I-2.2 FOR FURNITURE, FIXTURES AND EQUIPMENT LEGEND.
- PROVIDE CONTROL JOINTS IN GYPSUM BOARD WALL CONSTRUCTION AS INDICATED. VERIFY FINAL CONTROL JOINT LOCATIONS WHETHER OR NOT INDICATED ON THE DRAWINGS WITH ARCHITECT PRIOR TO STARTING WORK.
- SEE KEY NOTES AND NOTES ON PLANS FOR SPECIFIC NOTES FOR EACH DRAWING AREA.
- SEE PLUMBING, MECHANICAL, ELECTRICAL, FIRE PROTECTION AND STRUCTURAL DRAWINGS FOR RELATED WORK AND ADDITIONAL REQUIREMENTS.
- COORDINATE EQUIPMENT WORK WITH MANUFACTURERS AND SUPPLIER TO ENSURE PROPER ROUGH-IN CLEARANCES FOR INSTALLATION, OPERATION AND MAINTENANCE.
- PROVIDE SEALANT AT JUNCTION OF DIFFERENT MATERIALS UNLESS OTHER MEANS OF SEALING AND CLOSURES IS SPECIFIED.
- INSTALL METAL F REVEAL AT GWB WALL AT INTERNAL EDGE WHERE GWB WALL MEETS CMU WALL.
- PROVIDE THROUGH FINAL CLEANING THROUGHOUT AREA OF WORK PRIOR TO OWNER OCCUPANCY. INTERIOR CLEANING TO INCLUDE FLOORS, BASE, WALLS, WALL-MOUNTED EQUIPMENT, FIXTURES, FURNISHINGS, DOORS, WINDOWS, FRAMES, SILLS, CEILINGS, CEILING-MOUNTED EQUIPMENT AND FIXTURES.
- THE FINISH OF EACH PENETRATION OF EACH FLOOR ASSEMBLY IS TO BE FIELD WITH MATERIAL THAT IS TESTED FOR USE IN THROUGH-PENETRATION FIRE-RATED SYSTEMS.
- VERIFY MOUNTING HEIGHTS OF ACCESSORIES, EQUIPMENT, DOOR HARDWARE, CASEWORK, ETC. AND PROVIDE SOLID BLOCKING BEHIND ITEMS REQUIRING ANCHORAGE WHERE MOUNTING HEIGHTS ARE NOT INDICATED. MOUNTING HEIGHTS IN ACCORDANCE WITH RECOGNIZED INDUSTRY STANDARDS. COORDINATE LOCATIONS WITH MANUFACTURER OR SUPPLIER AND REFER MOUNTING HEIGHT QUESTIONS TO ARCHITECT FOR INTERPRETATION.
- SEE I-SHEETS FOR INTERIOR FINISHES PLANS, FINISH LEGEND, AND ADDITIONAL FINISHES REQUIREMENTS.
- REPAIR AND PATCH SPRAYED FIRE-RESISTIVE AND FIRESTOP MATERIALS WHERE DAMAGED DUE TO INSTALLATION OF NEW MATERIALS TO RESTORE SPECIFIED FIRE RATING.
- REFER TO LIFE SAFETY PLAN DRAWINGS AND CODE SUMMARY FOR FIRE-RATED FLOOR, WALL, AND STRUCTURE LOCATIONS.
- CONTRACTOR TO PATCH AND REPAIR ANY EXISTING AREA, SURFACE OR COMPONENT DAMAGED OR OTHERWISE ALTERED BY THE INSTALLATION OF THE NEW WORK. PATCHES AND REPAIRS TO MATCH EXISTING IN KIND, MATERIAL, TEXTURE, COLOR, ETC. UON.
- REFER TO TYPICAL CMU PATCHING DETAILS ON A-3.4 FOR REQUIREMENTS FOR PATCH A DEMOLISHED DEVICES, NEW OPENINGS IN EXISTING MASONRY WALL, AND TYPICAL MASONRY OPENINGS INFILLS. PATCH AND/OR REPAIR EXISTING CMU WALLS AND CONCRETE FLOORS WHERE DAMAGED DUE TO CONSTRUCTION. PATCH TO MATCH EXISTING ADJACENT CONSTRUCTION.
- WHERE UNDERLAYMENT OR FLOOR PATCHING IS REQUIRED, PLACE NEW UNDERLAYMENT AND/OR PATCHING COMPOUND PRIOR TO INSTALLING NEW WALLS AND FLOOR FINISHES. FEATHER EDGES OF PATCHING COMPOUND.
- REMOVE EXCESS PAINT, CAULK AND ADHESIVES FROM EXISTING AND NEW EQUIPMENT, COUNTERTOPS, CABINETS AND WALL-MOUNTED DEVICES.
- PATCH HOLES TO MATCH ADJACENT SURFACE WHERE SIGNS, MARKERBOARDS, TACKBOARDS, PARTITIONS OR ANY OTHER WALL MOUNTED FIXTURE OR EQUIPMENT IS REMOVED OR DEMOLISHED. REMOVE EMBEDDED ANCHOR OR SLEEVE, IF PRESENT.

C1 2ND FLOOR RENO PLAN
3/16" = 1'-0"



FLOOR PLAN KEY NOTES:

NOTE: NOT ALL KEY NOTES BELOW ARE APPLICABLE TO THIS SHEET. KEY NOTES SUPPLEMENT INFORMATION FOUND ELSEWHERE IN THE DRAWINGS. SEE SHEET A-0.0 FOR FLOOR PLAN GENERAL NOTES, PARTITION GENERAL NOTES, LEGENDS, AND ADDITIONAL REQUIREMENTS. SEE A-8.1 THROUGH A-8.5 AND I-8.1 THROUGH I-8.2 FOR ALTERNATE PLANS.

- 01 ALIGN FACES OF WALLS.
- 02 FOR NEW SLAB AS REQUIRED FOR NEW FOOTING. SEE STRUCTURAL DRAWINGS FOR ADDITIONAL REQUIREMENTS.
- 03 WALL MOUNTED MIRRORS. SEE INTERIOR ELEVATION SHEETS FOR ADDITIONAL INFORMATION. ALTER TYPE XX.
- 04 PROVIDE INTUMESCENT PAINT PER UL DETAIL Y633 ON EXISTING WIDE FLANGE COLUMN. COLOR TO MATCH P5. SEE T-3.1 - T-3.6 FOR ADDITIONAL REQUIREMENTS.
- 05 PROVIDE INTUMESCENT PAINT PER UL DETAIL Y634 ON NEW TUBE STEEL COLUMNS. COLOR TO MATCH P5. SEE T-3.1 - T-3.6 FOR ADDITIONAL REQUIREMENTS.
- 06 HYDRAULIC CEMENT UNDERLAYMENT LEVEL WITH CONCRETE SLAB AT CORRIDOR, APPROXIMATELY 2 1/2". FULL EXTENTS OF ROOM 123.
- 07 PATCH SPRAY FIRE PROOFING PER UL DETAIL G710 AS NEEDED ON COLUMNS WHERE WRAP WAS DEMOLISHED. SEE T-3.1 - T-3.6 FOR ADDITIONAL REQUIREMENTS.
- 08 TOOTH IN CMU AROUND NEW OPENING.
- 09 PROVIDE CONTROL JOINT IN GWB WALL. SEE DETAIL G7/A-3.4.
- 10 PROVIDE F REVEAL AT INTERSECTION OF GWB WALL TO EXISTING CMU WALL.
- 11 PATCH CMU WHERE DATA IS REMOVED.

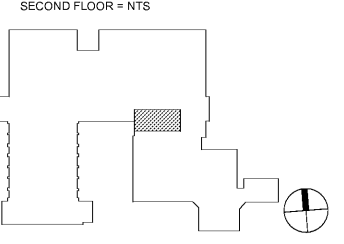
FLOOR PLAN HATCH LEGEND:

- NEW CONCRETE SLAB ON GRADE TO APPROXIMATE EXTENTS INDICATED BY HATCH ON PROPERLY COMPACTED 4" STONE FILL AND NEW VAPOR BARRIER TO MEET ADJACENT FLOOR SLAB ELEVATION, UON. SEE STRUCTURAL DRAWINGS FOR ADDITIONAL REQUIREMENTS.
- NEW WALL. SEE A-0.0 FOR PARTITION SCHEDULE AND WALL TYPES.
- EXISTING WALL TO REMAIN.

RATED ASSEMBLIES LEGEND:

- NOTES: RATINGS ARE NOT SHOWN THROUGH DOORS FOR CLARITY. SEE A-0.0 FOR PARTITION TYPES. SEE LIFE SAFETY PLANS ON T-2.1 - T-2.3 FOR FULL EXTENT OF RATINGS, INCLUDING HORIZONTAL RATINGS. RATINGS ARE CONTINUOUS AROUND OPENINGS AND OPENINGS ARE TO BE PROTECTED IN ACCORDANCE WITH THE NC STATE BUILDING CODE. PROTECT ALL PENETRATIONS.
- EXISTING 1-HR RATED FIRE BARRIER
 - EXISTING 2-HR RATED FIRE BARRIER
 - EXISTING SMOKE RESISTANT WALL
 - NEW SMOKE RESISTANT WALL

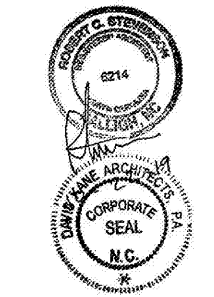
KEY PLAN



PROJECT INFORMATION

**UNCG ATHLETICS
COLEMAN BUILDING
WEIGHT ROOM**
SCO ID No. 19-20597-01A | Code: 41825 Item: 304
1408 Walker Ave., Greensboro, NC 27402

SEALS



DKA JOB NUMBER

1915

REVISIONS

NO.	DESCRIPTION

These drawings are the property of Davis Kone Architects, P.A. They may not be re-used for any purpose without written permission. Copyright © 2019 by Davis Kone Architects, P.A. All rights reserved.

PA: RS
PM: SB
Drawn By: JW
Plot Date: 10/23/2019 4:09:36 PM

DATE ISSUED

BID DOCUMENTS
10/22/19

SHEET TITLE

SECOND FLOOR ALTERATION PLAN
A-1.2