

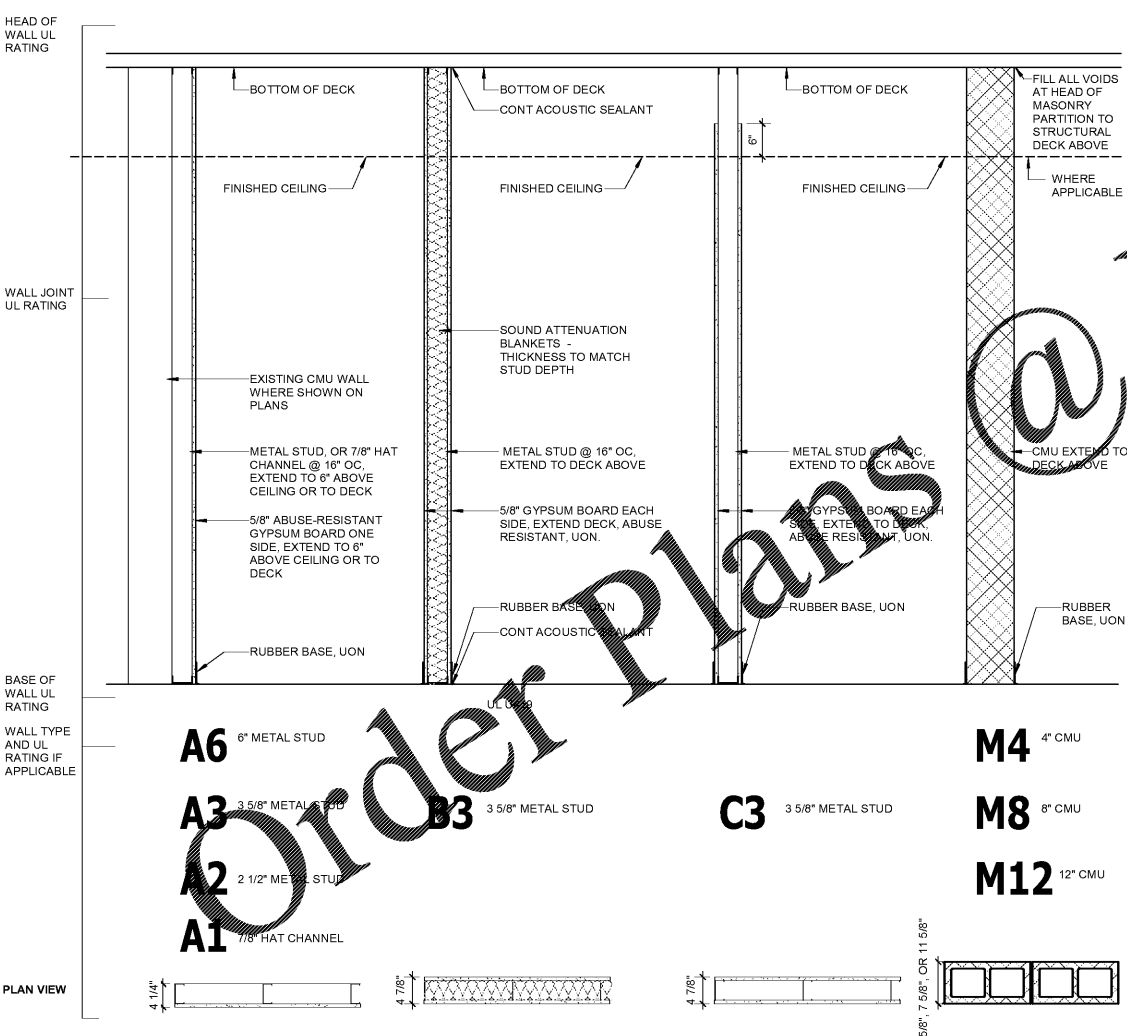
**GENERAL SYMBOL LEGEND**

<b>COLUMN GRID</b> EXISTING COLUMN GRID NEW COLUMN GRID	<b>WALLS</b> EXISTING WALL OR PARTITION NEW WALL OR PARTITION <b>PARTITION TYPE</b> REFER TO INTERIOR PARTITION LEGEND	<b>ELEVATION DATUM REFERENCE</b> Name ELEVATION Datum Reference Room name RELATIVE FINISH FLOOR ELEVATION
<b>ENLARGED DRAWING REFERENCE</b> DRAWING NUMBER SHEET NUMBER	<b>WINDOW TYPE</b> ALIGN FACES OF DESIGNATED SURFACES	<b>CONTROL JOINT</b> FURNITURE, FIXTURES, & EQUIPMENT KEY
<b>BUILDING / WALL SECTION CUT REFERENCE</b> DRAWING NUMBER SHEET NUMBER	<b>DOOR / DOOR NUMBER</b> DOOR NUMBER	<b>KEY NOTE</b> FLOOR DRAIN NORTH ARROW
<b>EXTERIOR ELEVATION REFERENCE</b> DRAWING NUMBER SHEET NUMBER	<b>REVISION REFERENCE</b> REVISION NUMBER	<b>INDICATES TRUE NORTH DIRECTION</b>
<b>INTERIOR ELEVATION REFERENCE</b> DRAWING NUMBER SHEET NUMBER	<b>ROOM TAG</b> Room name ROOM NAME ROOM NUMBER	

**ABBREVIATIONS**

@	ANCHOR BOLT	DEPT	DEPARTMENT	GWB	GYPSUM WALL BOARD	OPCI	OWNER-PROVIDED CONTRACTOR-INSTALLED	ST	SIGN TYPE
AB	ACCESSORY	DET	DETAIL	GYP BD	GYPSUM BOARD	OPNG	OPENING(S)	STD	STANDARD
ACC	ACOUSTIC(AL) CEILING TILE	DIA	DIAMETER	HB	HOSE BIBB	OPP	OPPOSITE	STL	STEEL
ADD	ADDITIONAL	DIM	DIMENSION	HD	HEAVY DUTY	P	PAINT	STOR	STORAGE
ADJ	ADJACENT	DS	DOWN SPOUT	HDWR	HARDWARE	PL	PLASTIC LAMINATE	STRFR	STOREFRONT
AF	ABOVE FINISHED FLOOR	DWG	DRAWING	HM	HOLLOW METAL	PLYWD	PLYWOOD	STRUCT	STRUCTURAL
ALT	ALTERNATE	EA	EACH	HORIZ	HORIZONTAL	PNT	PAINT(ED)	SUSP	SUSPENDED
ALUM	ALUMINUM	EJ	EXPANSION JOINT	HT	HEIGHT	PROP	PROPERTY	SYS	SYSTEM(S)
ANOD	ANODIZED	EJC	EXPANSION JOINT COVER	ID	INSIDE DIAMETER	PSF	POUNDS / SQUARE FOOT	TEL	TELEPHONE
APPROX	APPROXIMATE	ELEV	ELEVATION	IF	INSIDE FACE	PT	POUNDS / SQUARE INCH	THRES	THRESHOLD
ARCH	ARCHITECTURAL	ELEC	ELECTRIC(AL)	INSUL	INSULATION	PTN	PARTITION	TOM	TOP OF MASONRY
AV	AUDIO VISUAL	ELEV	ELEVATOR	INT	INTERIOR	PVC	POLYVINYL CHLORIDE	TOS	TOP OF STEEL
B	BASE	EQ	EQUAL	LAB	LABORATORY	QT	QUARRY TILE	TYP	TYPICAL
BD	BOARD	EQUIP	EQUIPMENT	LAM	LAMINATE	QTY	QUANTITY	TZ	TERRAZZO
BEJ	BUILDING EXPANSION JOINT	EWC	ELECTRIC WATER COOLER	LAV	LAVATORY	R	RADIUS	UON	UNLESS OTHERWISE NOTED
BFF	BELOW FINISHED FLOOR	EXIST	EXISTING	LIN	LINOLEUM	RA	RETURN AIR	UPS	UNINTERRUPTED POWER SUPPLY
BLDG	BUILDING	EXP	EXPOSED	LVR	LOUVER	RB	RUBBER BASE	VB	VINYL BASE
BLKG	BLOCKING	EXT	EXTERIOR	LVT	LUXURY VINYL TILE	REF	REFLECTED CEILING PLAN	VCT	VINYL COMPOSITION TILE
BOD	BOTTOM OF DECK	EXTG	EXISTING	MAS	MASONRY	RD	ROOF DRAIN	VIF	VISIBILITY IN FIELD
BOT	BOTTOM	FACT	FACTORY FINISH	MATL	MATERIAL	RDL	ROOF DRAIN LEADER	W	WITH
BRG	BEARING	FCO	FLOOR CLEAN OUT	MAX	MAXIMUM	REBAR	STEEL REINFORCED BAR	W/O	WITHOUT
BSMT	BASEMENT	FD	FLOOR DRAIN	MECH	MECHANICAL	REF	REFERENCE	WC	WALLCOVERING
CI	CAST IRON	FE	FIRE EXTINGUISHER	MEMB	MEMBRANE	REIN	REINFORCE(D)MENT	WD	WOOD
CJ	CONTROL JOINT	FFE	FINISHED FLOOR ELEVATION	MFR	MANUFACTURER	REQD	REQUIRED	WG	WIRED GLASS
CL	CENTER LINE	FIN	FINISH	MIN	MINIMUM	REV	REVISION(S) REISED	WP	WALL PANEL
CLG	CEILING	FLR	FLOOR	MISC	MISCELLANEOUS	RM	ROOM	WSCT	WAINSCOT
CLR	CLEAR	FLUOR	FLUORESCENT	MO	MASONRY OPENING	SC	SOLID SURFACE	WWF	WELDED WIRE FABRIC
CLSM	CLASSROOM	FND	FOUNDATION	MTL	METAL	SCT	SECTION	WWM	WELDED WIRE MESH
CM	CONSTRUCTION MANAGER	FOC	FACE OF CONCRETE	NA	NOT APPLICABLE	SFT	SQUARE FEET		
CMU	CONCRETE MASONRY UNIT	FOM	FACE OF MASONRY	NIC	NOT IN CONTRACT	SF	SQUARED		
CO	CLEAN OUT	FRP	GLASS FIBER REINFORCED PLASTIC PANELS	NOM	NOMINAL	SH	SHEET		
COL	COLUMN	FRT	FIRE-RETARDANT-TREATED	NTS	NOT TO SCALE	SIM	SIMILAR		
CONC	CONCRETE	FTG	FOOTING	GA	GAUGE	SFC	SOLID SURFACE		
CONST	CONSTRUCTION	GA	GALVANIZED	OC	ON CENTER	SFC	SPECIFICATION(S)		
CONT	CONTINUOUS	GC	GENERAL CONTRACTOR	OD	OUTSIDE DIAMETER	SPKLR	SPRINKLER		
CPT	CARPET	GFRC	GLASS FIBER REINFORCED CONCRETE	OF	OUTSIDE FACE	SQ FT	SQUARE FEET		
CR	CARD READER	GL	GLASS	OH	OVERHANG	SQ IN	SQUARE INCH		
CSK	COUNTERSUNK	GLZ	GLAZING	OHD	OVERHEAD	SS	STAINLESS STEEL		
CT	CERAMIC TILE								

**INTERIOR PARTITION LEGEND**



**INTERIOR PARTITION NOTES:**

- ALL RATED ASSEMBLIES SHALL BE STENCILED WITH RATED WALL WARNING MESSAGE IN RED TO READ AS FOLLOWS: "\_\_\_\_ HOUR RATED FIRE BARRIER. SEAL ALL PENETRATIONS" WITH APPLICABLE HOUR RATING INSERTED. HOUR RATING TO BE AS NOTED ON PLANS. MESSAGE TO BE IN UPPERCASE LETTERS, PLACED 12" ABOVE CEILING, SPACED AT 12" O.C. ON BOTH SIDES OF WALLS AND ON UNDERSIDE OF HORIZONTAL RATED ASSEMBLIES.
- SEE SHEETS T-3.1 THROUGH T-3.5 FOR UL RATED PARTITION ASSEMBLIES AS REQUIRED BY INTERIOR PARTITION LEGEND. AT ALL RATED ASSEMBLY PENETRATIONS AS REQUIRED BY INTERIOR PARTITION LEGEND, SEE PLUMBING, MECHANICAL AND ELECTRICAL SHEETS FOR PROTECTION OF PENETRATIONS IN RATED ASSEMBLIES. SEAL PERimeter OF ALL RATED ASSEMBLIES AT DECK, STRUCTURE, CEILING, FLOOR AND ADJACENT WALLS.
- COORDINATE PERIMETER OF WALLS OF DIFFERENT TYPES SUCH THAT FINISH GWB SURFACES ALIGN IN SAME PLANE.
- AT ALL NON-RATED WALL AND PARTITIONS, SEAL ALL PENETRATIONS USING APPROVED NON-COMBUSTIBLE MATERIAL.
- AT PARTITION WALLS WITH SOUND BATT INSULATION, PROVIDE CONTINUOUS ACOUSTIC SEALANT AROUND PERIMETER OF PARTITION AT ADJACENT SURFACES AND AT PENETRATIONS.
- TOP OF WALL BRACING NOT SHOWN ON THIS SHEET. SEE A-3.2 FOR TYPICAL WALL BRACING REQUIREMENTS.
- ISOLATE NON-LOAD-BEARING STUD FRAMING FROM BUILDING STRUCTURE TO PREVENT TRANSFER OF VERTICAL LOADS WHILE PROVIDING LATERAL SUPPORT AS SPECIFIED.
- PROVIDE GWB CONTROL JOINTS PER DETAILS ON SHEET A-3.4 AS INDICATED ON INTERIOR ELEVATIONS AND ON RCPs. DRYWALL CONTRACTOR TO VERIFY ALL RECOMMENDED LOCATIONS WITH ARCHITECT PRIOR TO INSTALLATION.
- REFER TO INTERIOR FINISHES PLANS AND REFLECTED CEILING PLANS FOR ADDITIONAL WALL FINISH, BASE, AND CEILING INFORMATION.
- PROVIDE MOLD RESISTANT GWB WITHIN 4 FEET OF BOTTLE FILLER, UON.
- PROVIDE 2X SOLID WOOD BLOCKING CONCEALED IN METAL STUD WALL CONSTRUCTION FOR WALL-MOUNTED FIXTURES, FURNISHINGS, EQUIPMENT AND ACCESSORIES. SEE TYPICAL DETAIL ON SHEET A-3.4

**BID ALTERNATES:**

- ALTERNATE NO. A1: INTERIOR STAIR.
- ALTERNATE NO. A2: FIRST FLOOR CORRIDOR STOREFRONT WITH GL-1 GLAZING.
- ALTERNATE NO. A3: FIRST FLOOR CORRIDOR STOREFRONT WITH GL-2 GLAZING.
- ALTERNATE NO. A4: FIRST FLOOR NUTRITION.
- ALTERNATE NO. A5: SECOND FLOOR STOREFRONT WITH GL-1 GLAZING.
- ALTERNATE NO. A6: SECOND FLOOR FIRE RATED WINDOW AND GLAZING.
- ALTERNATE NO. A7: ATHLETIC RUBBER FLOOR AND TURF.
- ALTERNATE NO. G1: DOOR HARDWARE LOCKSETS (PREFERRED BRAND ALTERNATE).
- ALTERNATE NO. G2: DOOR HARDWARE DOOR CLOSERS (PREFERRED BRAND ALTERNATE).
- ALTERNATE NO. G3: DOOR HARDWARE EXIT DEVICES, POWER TRANSFER, AND POWER SUPPLIES (PREFERRED BRAND ALTERNATE).

**HAZARDOUS MATERIALS GENERAL NOTES:**

- CERTAIN EXISTING MATERIALS THROUGHOUT THE BUILDING TESTED POSITIVE FOR HAZARDOUS CONTENT. REFER TO HAZARDOUS MATERIALS REPORT IN THE PROJECT MANUAL FOR REFERENCE.
- IN THE EVENT HAZARDOUS MATERIALS NOT NOTED IN THE HAZARDOUS MATERIALS REPORT ARE ENCOUNTERED, CONTRACTOR IS TO STOP WORK IMMEDIATELY AND CONTACT THE OWNER'S REPRESENTATIVE.

**ARCHITECTURAL MATERIALS LEGEND**

EARTH	ACOUSTICAL CEILING TILE
GRANULAR FILL	RESINOUS FLOORING: TERRAZZO, TROWEL-ON, UON
SAND, GROUT AS NOTED	TILE: CERAMIC, QUARRY, UON
CAST-IN-PLACE CONCRETE	INSULATED GLASS: (SMALL SCALE)
PRECAST CONCRETE, CAST STONE	INSULATED GLASS: (DETAIL)
CONCRETE MASONRY UNIT	ROOF MEMBRANE
BRICK MASONRY	WATERPROOFING, DAMPPROOFING
STONE: QUARTZ	TRANSITION MEMBRANE FLASHING
METAL: TYPE AS NOTED	AIR BARRIER
METAL: ROLLED SHAPES	BATT INSULATION: THERMAL OR ACOUSTICAL, UON
WOOD FRAMING / BLOCKING: CONTINUOUS	RIGID INSULATION: THERMAL, ACOUSTICAL, OR SAFING
WOOD BLOCKING / NOT CONT.	GYPSUM WALL BOARD
FINISHED WOOD SHOWN SECTION OR ELEVATION	SHEATHING: GYPSUM, U.O.N.
PARTICLEBOARD	SPRAYED FIREPROOFING SHOWN ON ROLLED SHAPE
PLYWOOD	

NOTE: PATTERNS SHOWN REPRESENT CUT MATERIALS IN PLAN OR SECTION, UNLESS NOTED OTHERWISE ABOVE

**REFLECTED CEILING PLAN SYMBOL LEGEND**

<b>CEILING TAG</b> CEILING HEIGHT ABOVE FINISH FLOOR	<b>RECESSED / SUSPENDED LIGHT FIXTURE</b> LINEAR PENDANT CAN LIGHT	<b>CEILING MOUNTED SMOKE DETECTOR</b> <b>CEILING MOUNTED HEAT DETECTOR</b>
<b>SPOT ELEVATION</b>	<b>MECHANICAL AIR SUPPLY DIFFUSER</b>	<b>WALL MOUNTED FIRE ALARM AUDIO/VISUAL DEVICE</b>
<b>GYB BOARD CEILING</b> REFER TO PLAN FOR SUSPENSION TYPE	<b>MECHANICAL EXHAUST REGISTER</b> <b>MECHANICAL RETURN REGISTER</b>	<b>NEW CONCEALED PENDANT SPRINKLER HEAD</b> <b>NEW UPRIGHT SPRINKLER HEAD</b>
<b>ACOUSTIC CEILING TILE: 2x2'</b>	<b>EXIT LIGHT FIXTURE</b> <b>EXIT DIRECTIONAL ARROW</b>	<b>EXISTING CONCEALED PENDANT SPRINKLER</b> <b>EXISTING UPRIGHT SPRINKLER HEAD</b>
<b>UNDER CABINET LIGHTING</b>	<b>CONTROL JOINT</b>	<b>WALL MOUNTED FIRE ALARM VISUAL DEVICE</b>