

RATED ASSEMBLIES GENERAL NOTES:

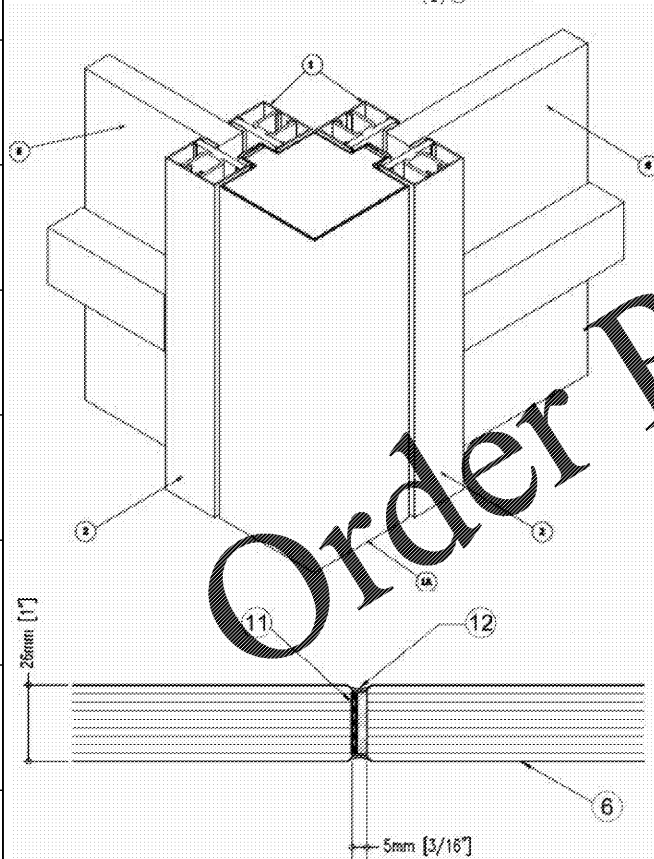
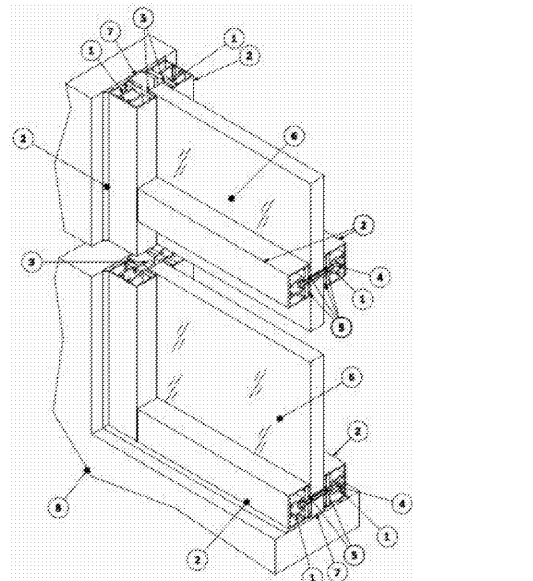
- UL CERTIFIED RATED ASSEMBLIES ARE REPRINTED FROM THE ONLINE CERTIFICATIONS DIRECTORY WITH PERMISSION FROM UNDERWRITERS LABORATORIES, INC.
- FIRE PROTECTION MATERIALS DENOTED IN THE FIRE PROTECTION DETAILS PROVIDED HEREIN SHALL NOT BE CONSTRUED AS PROPRIETARY. EQUIVALENT FIRE PROTECTION SYSTEMS MAY BE UTILIZED IF SUBMITTED BY THE CONTRACTOR FOLLOWING REQUIREMENTS SET FORTH IN THE GENERAL CONDITIONS.
- ANY SUBSTITUTIONS OF MATERIALS USED IN RATED ASSEMBLIES ARE SUBJECT TO APPROVAL BY AUTHORITIES HAVING JURISDICTION.

Design No. U545

April 26, 2019

Non-Bearing Wall Rating - 1 or 2 hr.

* Indicates such products shall bear the UL or cUL Certification Mark for jurisdictions employing the UL or cUL Certification (such as Canada), respectively.



Butt Glazing Joint Detail (Horizontal Section)

1. **Framing Members** — Used to form the perimeter of the wall and the horizontal and vertical mullions separating glazed openings. The framing members are made of two halves, nom. 1.916 in. wide (48 mm) with a nom. minimum depth of 1.3 in. (33 mm) with lengths cut according to glazing size. Secured to wall with by clamping over the mounting channel described in Item 1. Mullions are fastened to each other and to the perimeter frame with a 1/4-20 x 1/2-in. socket head cap screw through the U channel of the framing member. Installation of frames and channels to be made in accordance with the installation instructions for this system. An optional vertical butt joint glazing assembly may be used with this construction of framing members (see Item 6).

AL KUHAMMI METAL INDUSTRIES LTD — TGP Fire Frames Aluminum Series Curtain Wall

TECHNICAL GLASS PRODUCTS — TGP Fire Frames Aluminum Series Curtain Wall

1A. **Steel Framing Members** — Optional — 10° - 135° corner assembly for use with Steel Framing Members (Item 1). Corner assemblies secured to steel framing members (Item 1) with 1 in. by 1 in. steel angles with 1 in. sheet metal screws secured through each leg of the angle. Angles spaced nominally 18 in. OC down the length of the corner assembly.

TECHNICAL GLASS PRODUCTS — Aluminum Series Corner Transition

2. **Aluminum Trim** — Supplied with the framing members. Nom. 1.916 in. (40 mm) wide with a nom. depth of 1.3 in. (33 mm) with lengths cut according to glazing size. Trim is slid over framing members after installation.

3. **Stainless Steel Spacers** — Supplied with the framing members. Nom 3/8 in. (9.5 mm) diameter with a nom. minimum depth of 1-1/16 in. (23 mm) with depth adjusted to match Pyrostop Panel thickness. Spacers are used to separate the two halves of the framing members to accommodate the fire resistant glazing material described in Item 6.

4. **Framing Member Fasteners** — Supplied with the framing members. Screws have a nom. 1/4 in. (6.35 mm) diameter with a minimum length of 2.363 in. (60 mm). Screws to be sized to accommodate the thickness of the fire resistant glazing material described in Item 6. Fasteners to be located every 18 in. (457 mm) OC.

5. **Glazing Tape** — Supplied with the framing members. Nom. 1/2 in. (12.7 mm) by 1/4 in. (6.5 mm) closed cell PVC glazing tape applied to the steel framing members to cushion and seal the glazing material when installed.

6. **Fire Resistant Glazing Material** — For 1 hr. assemblies - Minimum 0.85 in. (22 mm) thick laminated glass supplied in various sizes. Maximum size of glazing not to exceed 39' (3.6 m) with a maximum horizontal or vertical dimension of 96 in. (244 cm). For all products except Pyrostop 60-101, when glazing size is at least 1 in. (26 mm) thick, max size not to exceed 51.7 sq ft (4.8 m²) with max width of 96 in. (244 cm) wide and max height of 118-1/8 in. (300 cm). For 2 hr assemblies - Minimum 2 in. (54 mm) thick laminated glass supplied in various sizes. Maximum size of glazing not to exceed 25.9 sq ft (2.41 m²) with a maximum glass dimension of 111 in. (2.82 m). Glazing material may also be installed using a vertical butt joint on either side of the glazing sections for 1 hour assemblies. Maximum size of the largest section of the butt glazing not to exceed 63 in. (1600 mm) in width and 118-1/8 in. (3000 mm) in height. Minimum size for any one section of the butt glazing assembly is not to be less than 31-9/16 in. (802 mm) in width. Butt glazing assembly shall include an intumescent strip (see Item 11) and sealant (Item 12) between the edge of the glass and the perimeter Framing Members. The glazing sizes and orientation specified for the butt glazing assembly are also eligible for 1 hr rating when the vertical butt joint is replaced with Steel Framing Members.

PILKINGTON DEUTSCHLAND AG — Pyrostop 60-101, Pyrostop 60-102, Pyrostop 60-201, Pyrostop 60-50, Pyrostop 60-161, Pyrostop 60-161 FG, Pyrostop 60-181, Pyrostop 60-181 Triple, Pyrostop 60-281, Pyrostop 60-281 FG, Pyrostop 60-281 FG Triple, Pyrostop 60-351, Pyrostop 60-351 Triple, Pyrostop 60-361, Pyrostop 60-361 FG, Pyrostop 60-361 FG Triple, Pyrostop 60-381, Pyrostop 60-381 Triple, Pyrostop 60-401, Pyrostop 90-104, Pyrostop 120-106, Pyrostop 120-201, Pyrostop 120-203, Pyrostop 120-262, Pyrostop 120-262, Pyrostop 120-282, Pyrostop 120-382

TECHNICAL GLASS PRODUCTS — FireGlass 60-101, FireGlass 60-161, FireGlass 60-201, FireGlass 60-201 TI, FireGlass 60-261, FireGlass 60-261 TI, FireGlass 60-361, FireGlass 60-361 TI, FireGlass 90-102, FireGlass 120-106, FireGlass 120-201, FireGlass 120-201 TI, FireGlass 120-202, FireGlass 120-203, FireGlass 120-203 TI, FireGlass 120-262, Pyrostop 60-101, Pyrostop 60-102, Pyrostop 60-201, Pyrostop 60-201 TI, Pyrostop 60-50, Pyrostop 60-161, Pyrostop 60-161 FG, Pyrostop 60-201, Pyrostop 60-281, Pyrostop 60-281 FG, Pyrostop 60-281 FG Triple, Pyrostop 60-281 TI, Pyrostop 60-281 TI FG, Pyrostop 60-281 TI FGX, Pyrostop 60-281 TI FGX, Pyrostop 60-351, Pyrostop 60-351 Triple, Pyrostop 60-361, Pyrostop 60-361 TI, Pyrostop 60-361 TI FG, Pyrostop 60-361 TI FGX, Pyrostop 60-361 TI FGX, Pyrostop 60-381, Pyrostop 60-381 Triple, Pyrostop 60-401, Pyrostop 90-104, Pyrostop 120-106, Pyrostop 120-201, Pyrostop 120-201 TI, Pyrostop 120-202, Pyrostop 120-203, Pyrostop 120-203 TI, Pyrostop 120-262, Pyrostop 120-262, Pyrostop 120-282, Pyrostop 120-382, Pyrostop 60 products may be faced with a glass clad polycarbonate panel (38mm max thickness) on one side.

TRULITE GLASS & ALUMINUM SOLUTIONS L L C — Pyrostop 60-101, Pyrostop 60-102, Pyrostop 60-201, Pyrostop 90-102, Pyrostop 120-106

7. **Mounting Channel** — The framing members are attached to the surrounding wall using a channel wide by 1-1/8 in. tall U shaped steel channel that is screwed to the surrounding wall. The framing member clamp over the mounting channel on the side of the member opposite the glazing. The channel is to be installed per the framing member manufacturer's installation instructions.

8. **Wall Assembly** — The 1 hr fire rated wall assembly shall be constructed of the materials described in the individual U300, U400, V400, or U500 Series Wall or Partition Designs in the UL Fire Resistance Directory.

9. **Intumescent Tape** — (Not Shown) — Intumescent tape shall be applied with the steel framing members already attached to the framing members below the glazing tape described in Item 5.

10. **Setting Pads** — (Not Shown) — To be used in between horizontal framing members and bottom edge of glazing units to cushion bottom edge of glazing when installed. Setting pads are to be 1/4 in. (7 mm) thick, and are made of calcium silicate board, silicone rubber (minimum 80 durometer), or hardwood.

11. **Butt Glazing Intumescent Strip** — For the butt glazing assembly, 1 in. (25 mm) wide by 1/16 in. (1.5 mm) thick tape, shall be installed along the vertical edges of the edge of glass at the butt joint.

GLUSKE — Kerafix 2000 Intumescent

12. **Butt Glazing Intumescent Sealant** — For the butt glazing assembly, silicone sealant shall be applied to seal the butt joint. Sealant shall be provided by the glass manufacturer.

PILKINGTON DEUTSCHLAND AG — Pilkington Pyrostop Sealant 1

* Indicates such products shall bear the UL or cUL Certification Mark for jurisdictions employing the UL or cUL Certification (such as Canada), respectively.

Design No. U905

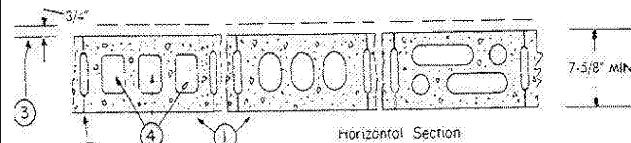
June 10, 2019

Bearing Wall Rating — 2 HR.

Nonbearing Wall Rating — 2 HR

This design was evaluated using a load design method other than the Limit States Design Method (e.g., Working Stress Design Method). For jurisdictions employing the Limit States Design Method, such as Canada, a load restriction factor shall be used — See Guide BXUV or BXUV7

* Indicates such products shall bear the UL or cUL Certification Mark for jurisdictions employing the UL or cUL Certification (such as Canada), respectively.



Horizontal Section

1. **Concrete Blocks** — Various designs. Classification D-2 (2 hr). See **Concrete Blocks** category for list of eligible manufacturers.

2. **Mortar** — Blocks laid in full bed of mortar, nom. 3/8 in. thick, of not less than 2-1/4 and not more than 3-1/2 parts of clean sharp sand to 1 part Portland cement (proportioned by volume) and not more than 50 percent hydrated lime (by cement volume). Vertical joints staggered.

3. **Portland Cement Stucco or Gypsum Plaster** — Add 1/2 hr to classification if used. Where combustible members are framed in wall, plaster or stucco must be applied on the face opposite framing to achieve a max. Classification of 1-1/2 hr. Attached to concrete blocks (Item 1).

4. **Loose Masonry Fill** — If all core spaces are filled with loose dry expanded slag, expanded clay or shale (Rotary Klin Process), water repellent vermiculite masonry fill insulation, or silicone treated perlite loose fill insulation add 2 hr to classification.

5. **Foamed Plastic** — (Optional-Not Shown) — 1-1/2 in. thick max, 4 ft wide sheathing attached to concrete blocks (Item 1).

ATLAS ROOFING CORP — "EnergyShield Pro Wall Insulation", "EnergyShield Pro 2 Wall Insulation", EnergyShield CGF Pro and EnergyShield Ply Pro

CARLISLE COATINGS & WATERPROOFING INC — Type R2+ SHEATHE

FIRESTONE BUILDING PRODUCTS CO L L C — "Emerve™ CI Foil Exterior Wall Insulation" and "Emerve™ CI Glass Exterior Wall Insulation"

HUNTER PANELS — Types "Xci-Class A", "Xci Foil (Class A)", "Xci 286"

RMX OPERATING L L C — Types "TSX-8500", "ECOMAXci FR", "TSX-8510", "ECOMAX ci FR White", "ECOMAXci", "ECOMAXci FR Air Barrier", "Thermasheath-XP", "Thermasheath", "Durasheath", "Thermasheath-3", "Durasheath-3"

THE DOW CHEMICAL CO — Types Therman Sheathing, Therman Light Duty Insulation, Therman Heavy Duty Insulation, Therman Metal Building Board, Therman White Finish Insulation, Therman ci Exterior Insulation, Therman XARMOR ci Exterior Insulation, Therman IH Insulation, Therman Plus Liner Panel, Therman Heavy Duty Plus (HDP) and TUFF-R™ ci Insulation

5A. **Building Units** — As an alternate to Items 5, min. 1-in thick polyisocyanurate composite foamed plastic insulation boards, nom. 48 by 48 or 96 in.

HUNTER PANELS — "Xci NB", "Xci Ply"

RMX OPERATING L L C — "Thermasheath-SF", "ECOBASOC", "ThermaBase-CI", "ECOMAXci FR Ply", "ECOMAXci Ply"

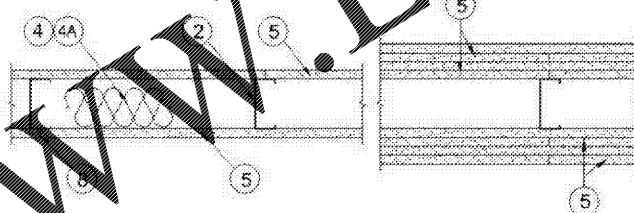
* Indicates such products shall bear the UL or cUL Certification Mark for jurisdictions employing the UL or cUL Certification (such as Canada), respectively.

Design No. U419

September 13, 2019

Nonbearing Wall Ratings — 1, 2, 3 or 4 Hr (See Items 1 & 5 through 8)

* Indicates such products shall bear the UL or cUL Certification Mark for jurisdictions employing the UL or cUL Certification (such as Canada), respectively.



1. **Floor and Ceiling Runners** — (Not Shown) — For use with Item 2 — Channel shaped, fabricated from min 25 MSG corrosion-protected steel, min depth to accommodate stud size, with min 1-1/4 in. long legs, attached to floor and ceiling with fasteners 24 in. OC max.

1A. **Framing Members** — Floor and Ceiling Runner — Not Shown — In lieu of Item 1 — For use with Item 2P, proprietary channel shaped runners, 3-5/8 in. deep attached to floor and ceiling with fasteners 24 in. OC max.

CALIFORNIA EXPANDED METAL PRODUCTS CO — Viper25™ Track

CRACO MFG INC — SmartTrack25™

MARINO/WARE, DIV OF WARE INDUSTRIES INC — Viper25™ Track

FUSION BUILDING PRODUCTS — Viper25™ Track

IMPERIAL MANUFACTURING GROUP INC — Viper25™ Track

1B. **Framing Members** — Floor and Ceiling Runner — Not Shown — In lieu of Item 1 — For use with Item 2C, proprietary channel shaped runners, 1-1/4 in. wide by 3-5/8 in. deep fabricated from min 0.018 in. thick galv steel, attached to floor and ceiling with fasteners spaced 24 in. OC max.

CALIFORNIA EXPANDED METAL PRODUCTS CO — Viper20™ Track

MARINO/WARE, DIV OF WARE INDUSTRIES INC — Viper20™ Track

FUSION BUILDING PRODUCTS — Viper20™ Track

IMPERIAL MANUFACTURING GROUP INC — Viper20™ Track

1C. **Framing Members** — Floor and Ceiling Runners — (Not Shown) — In lieu of Item 1 — Channel shaped, attached to floor and ceiling with fasteners 24 in. OC max.

ALLSTEEL & GYPSUM PRODUCTS INC — Type SUPREME D24/30EQD and Type SUPREME D20

CONSOLIDATED FABRICATORS CORP, BUILDING PRODUCTS DIV — Type SUPREME D24/30EQD and Type SUPREME D20

QUAIL RUN BUILDING MATERIALS INC — Type SUPREME D24/30EQD and Type SUPREME D20

SCAFCO STEEL STUD MANUFACTURING CO — Type SUPREME D24/30EQD and Type SUPREME D20

STEEL CONSTRUCTION SYSTEMS INC — Type SUPREME D24/30EQD and Type SUPREME D20

UNITED METAL PRODUCTS INC — Type SUPREME D24/30EQD and Type SUPREME D20

1D. **Floor and Ceiling Runners** — (Not Shown) — For use with Item 2A — Channel shaped, fabricated from min 20 MSG corrosion-protected or galv steel, min depth to accommodate stud size, with min 1 in. long legs, attached to floor and ceiling with fasteners spaced max 24 in. OC.

1E. **Framing Members** — Floor and Ceiling Runners — (Not Shown, As an alternate to Item 1) — For use with Items 2E, 5F or 5G or 5I only, channel shaped studs, min depth as indicated under Item 5, 1-1/4 in. deep fabricated from min 0.015 in. (min bare metal thickness) galvanized steel, attached to floor and ceiling with fasteners spaced 24 in. OC max.

CLARKDIETRICH BUILDING SYSTEMS — CD ProTRAK

DMFCWBS L L C — ProTRAK

MBA METAL FRAMING — ProTRAK

RAM SALES L L C — Ram ProTRAK

STEEL STRUCTURAL PRODUCTS L L C — Tri-S ProTRAK

1F. **Framing Members** — Floor and Ceiling Runner — Not Shown — In lieu of Item 1 — For use with Item 2F, proprietary channel shaped runners, minimum width to accommodate stud size, with 1, 1/8 in long legs fabricated from min 0.015 in. (min bare metal thickness) galv steel, attached to floor and ceiling with fasteners spaced 24 in. OC max.

SUPER STUD BUILDING PRODUCTS — The Edge

1G. **Framing Members** — Floor and Ceiling Runner — For use with Item 2G, proprietary channel shaped runners, minimum width to accommodate stud size attached to floor and ceiling with fasteners 24 in. OC max.

STUCCO BUILDING SYSTEMS — CROCSTUD Track

1H. **Floor and Ceiling Runners** — (Not Shown) — Channel shaped, fabricated from min 0.02 in. galv steel, min width to accommodate stud size, with min 1 in. long legs, for use with studs specified below and fabricated from min 0.018 in. galv steel or thicker, attached to floor and ceiling with fasteners spaced max 24 in. OC.

MARINO/WARE, DIV OF WARE INDUSTRIES INC — Viper20™ Track VT100

FUSION BUILDING PRODUCTS — Viper20™ Track VT100

IMPERIAL MANUFACTURING GROUP INC — Viper20™ Track VT100

1I. **Framing Members** — Floor and Ceiling Runners — (Not Shown, As an alternate to Item 1) — For use with Items 2H, channel shaped, fabricated from min 0.015 in. (min bare metal thickness) galvanized steel, attached to floor and ceiling with fasteners 24 in. OC max.

TELLING INDUSTRIES L L C — TRUE-TRACK™

1J. **Framing Members** — Floor and Ceiling Runner — Not Shown — In lieu of Item 1 — For use with Item 2J, proprietary channel shaped runners, 3-5/8 in. deep attached to floor and ceiling with fasteners 24 in. OC max.

TELLING INDUSTRIES L L C — Viper25™ Track

1K. **Framing Members** — Floor and Ceiling Runner — Not Shown — In lieu of Item 1 — For use with Item 2J, proprietary channel shaped runners, 1-1/4 in. wide by 3-5/8 in. deep fabricated from min 0.018 in. thick galv steel, attached to floor and ceiling with fasteners spaced 24 in. OC max.

TELLING INDUSTRIES L L C — Viper20™ Track

1L. **Framing Members** — Floor and Ceiling Runner — Not Shown — In lieu of Item 1 — For use with Item 2N, proprietary channel shaped runners, 1-1/4 in. wide by min. 3-1/2 in. deep fabricated from min 0.018 in. thick galv steel, attached to floor and ceiling with fasteners spaced 24 in. OC max.

STEEL STRUCTURAL PRODUCTS L L C — AlphaTRAK

1M. **Framing Members** — Floor and Ceiling Runners — Not Shown — As an alternate to Item 1 — For use with Item 2P, proprietary channel shaped runners, min width to accommodate stud size, galv steel, attached to floor and ceiling with fasteners spaced 24 in. OC max.

RONDO BUILDING SERVICES PTY LTD — Rondo Wall Track

1N. **Framing Members** — Floor and Ceiling Runners — Not Shown — As an alternate to Item 1 — For use with Item 2P, proprietary channel shaped runners, min width to accommodate stud size, galv steel, attached to floor and ceiling with fasteners spaced 24 in. OC max.

OEG BUILDING MATERIALS — OEG Track

1O. **Framing Members** — Floor and Ceiling Runner — Not Shown — In lieu of Item 1 — For use with Item 2Q, proprietary channel shaped runners, min width to accommodate stud size, fabricated from min. 25 MSG (0.018 in. min. bare metal thickness), attached to floor and ceiling with fasteners spaced 24 in. OC max.

CALIFORNIA EXPANDED METAL PRODUCTS CO — Viper X Track

2. **Steel Studs** — Channel shaped, fabricated from min 25 MSG corrosion-protected steel, min depth as indicated under Item 5, spaced a max of 24 in. OC. Studs to be cut 3/8 to 3/4 in. less than assembly height.

2A. **Steel Studs** — (As an alternate to Item 2, For use with Items 5B, 5E, 5H, 5J and 5K) — Channel shaped, fabricated from min 20 MSG corrosion-protected or galv steel, 3-1/2 in. min depth, spaced a max of 16 in. OC. Studs friction-fit into floor and ceiling runners. Studs to be cut 5/8 to 3/4 in. less than assembly height.

2B. **Framing Members** - Steel Studs — (As an alternate to Item 2, For use with Items 5C, 5I or 5K) — Proprietary channel shaped studs, 3-5/8 in. deep spaced a max of 24 in. OC. Studs to be cut 3/4 in less than the assembly height and installed with a 1/2 in. gap between the end of the stud and track at the bottom of the wall. For direct attachment of gypsum board only.

CALIFORNIA EXPANDED METAL PRODUCTS CO — Viper25™

CRACO MFG INC — SmartStud25™

MARINO/WARE, DIV OF WARE INDUSTRIES INC — Viper25™

FUSION BUILDING PRODUCTS — Viper25™

IMPERIAL MANUFACTURING GROUP INC — Viper25™

2C. **Framing Members** — Steel Studs — Not Shown — In lieu of Item 2 — proprietary channel shaped steel studs, min depth as indicated under Item 5, spaced a max of 24 in. OC, fabricated from min 0.018 in. thick galv steel. Studs cut 3/8 in. to 3/4 in. less in lengths than assembly heights.

CALIFORNIA EXPANDED METAL PRODUCTS CO — Viper20™

MARINO/WARE, DIV OF WARE INDUSTRIES INC — Viper20™

FUSION BUILDING PRODUCTS — Viper20™

IMPERIAL MANUFACTURING GROUP INC — Viper20™

2D. **Framing Members** — Steel Studs — In lieu of Item 2 — Channel shaped studs, min depth as indicated under Item 5, spaced a max of 24 in. OC. Studs to be cut 3/4 in. less than assembly height.

ALLSTEEL & GYPSUM PRODUCTS INC — Type SUPREME D24/30EQD and Type SUPREME D20

CONSOLIDATED FABRICATORS CORP, BUILDING PRODUCTS DIV — Type SUPREME D24/30EQD and Type SUPREME D20

QUAIL RUN BUILDING MATERIALS INC — Type SUPREME D24/30EQD and Type SUPREME D20

SCAFCO STEEL STUD MANUFACTURING CO — Type SUPREME D24/30EQD and Type SUPREME D20

STEEL CONSTRUCTION SYSTEMS INC — Type SUPREME D24/30EQD and Type SUPREME D20

UNITED METAL PRODUCTS INC — Type SUPREME D24/30EQD and Type SUPREME D20

2E. **Framing Members** — Steel Studs — (Not Shown, As an alternate to Item 2) — For use with Items 5F or 5G or 5I or 5K only, channel shaped studs, min depth as indicated under Item 5F, 5G or 5I, fabricated from min. 0.015 in. (min bare metal thickness) galvanized steel, spaced a max of 24 in. OC. Studs to be cut 3/4 in. less than assembly height.

CLARKDIETRICH BUILDING SYSTEMS — CD ProSTUD

DMFCWBS L L C — ProSTUD

MBA METAL FRAMING — ProSTUD

RAM SALES L L C — Ram ProSTUD

STEEL STRUCTURAL PRODUCTS L L C — Tri-S ProSTUD

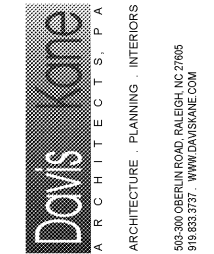
2F. **Framing Members** — Steel Studs — Not Shown — In lieu of Item 2 — proprietary channel shaped steel studs, minimum width indicated under Item 5, 1-1/4 in. deep fabricated from min 0.015 in. (min bare metal thickness) galvanized steel. Studs 3/8 in. to 3/4 in. less in lengths than assembly heights.

SUPER STUD BUILDING PRODUCTS — The Edge

2G. **Framing Members** — Steel Studs — Not Shown — In lieu of Item 2 — proprietary channel shaped studs, minimum width indicated under Item 5, Studs to be cut 3/8 to 3/4 in less than the assembly height.

STUCCO BUILDING SYSTEMS — CROCSTUD

CONTINUED ON T-3.2

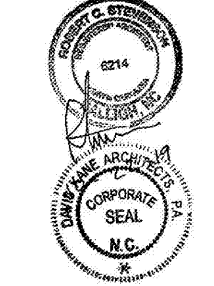


PROJECT INFORMATION

UNCG ATHLETICS
COLEMAN BUILDING
WEIGHT ROOM

SCO ID No. 19-20597-01A | Code: 41825 Item: 304
1408 Walker Ave., Greensboro, NC 27402

SEALS



DKA JOB NUMBER

1915

REVISIONS

NO.	DATE	DESCRIPTION

These drawings are the property of Davis Kane Architects, P.A. They may not be re-used for any purpose without written permission. Copyright © 2019 by Davis Kane Architects, P.A. All rights reserved.

PA: RS
PM: SB
Drawn By: JW
Plot Date: 10/23/2019 3:58:32 PM

DATE ISSUED

BID DOCUMENTS
10/22/19

SHEET TITLE

UL DETAILS

T-3.1