

INNOVATIVE DESIGN

850 W. MORGAN STREET
RALEIGH, NORTH CAROLINA 27603
919-832-6303
919-832-3339 FAX



150 Fayetteville St., Suite 530, Raleigh, NC 27601
1927 South Tryon St., Suite 300, Charlotte, NC 28203
Phone: 919-310-2700 www.optimaengineering.com
North Carolina License Number: C-0914

PERMIT/BID SET

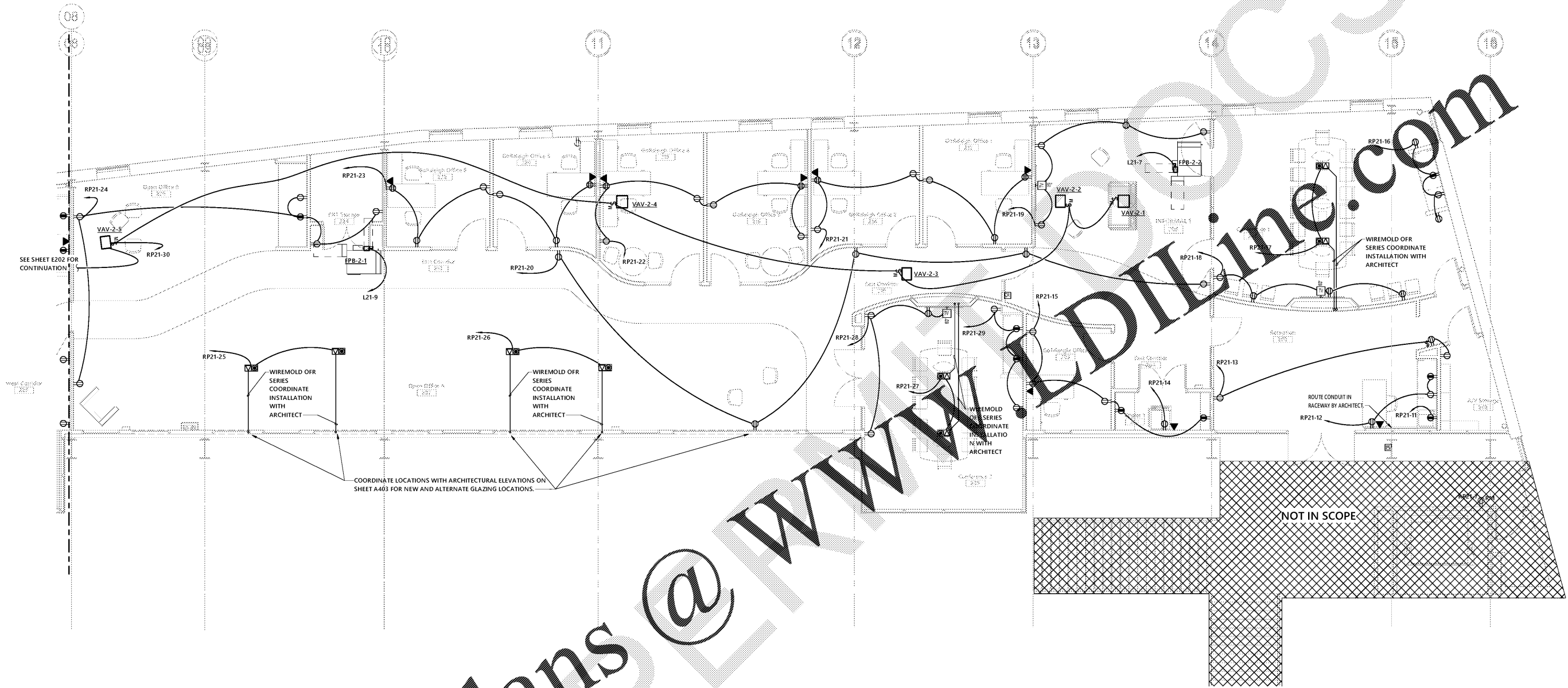


SEAL

Union Station Mezzanine Office Fit Up

City of Raleigh Transit Division

510 W Martin St, Raleigh, NC 27601



1 FLOOR PLAN - SECOND FLOOR - POWER PLAN - EAST
3/16" = 1'-0"

Order Plans @ WWW.PLANETDILINE.COM

GENERAL POWER NOTES		
A	WHERE CONNECTED TO A 20A. BRANCH CIRCUIT SUPPLYING AN INDIVIDUAL RECEPTACLE (SIMPLEX OR DUPLEX), THE RECEPTACLE SHALL BE RATED AT 20A.	
B	PROVIDE HOUSEKEEPING PADS FOR ALL FLOOR MOUNTED AND GRADE MOUNTED ELECTRICAL EQUIPMENT. MINIMUM REQUIREMENTS: 4" HIGH, 4% AIR ENTRAINED, POLYFIBER REINFORCED CONCRETE, 4" WIDER AND 4" LONGER THAN EQUIPMENT TO BE PLACED ON IT. REFER TO ELECTRICAL DETAIL DRAWINGS FOR TRANSFORMER, GENERATOR, OR SWITCHGEAR PADS THAT MAY EXCEED THESE REQUIREMENTS.	
C	REFER TO SPECIFICATIONS FOR MINIMUM CONDUCTOR SIZE ADJUSTMENTS FOR VOLTAGE DROP.	
D	WIRE COUNTS FOR CIRCUIT CONDUCTORS ARE NOT SHOWN. PROVIDE PROPER NUMBER OF CONDUCTORS TO ACHIEVE CIRCUIT AND SWITCHING CONNECTIONS SHOWN.	
E	MODIFICATIONS TO NUMBER OF CONDUCTORS IN HOME RUNS IN ADDITION TO CIRCUITS INDICATED ON THIS DRAWING ARE PROHIBITED.	

BUY AMERICA PROGRAM REQUIREMENTS
ALL PRODUCTS PROVIDED ON THIS PROJECT MUST BE MANUFACTURED IN COMPLIANCE WITH THE BUY AMERICA PROGRAM FOR FEDERALLY FUNDED TRANSPORTATION PROJECTS PER CODE OF FEDERAL REGULATIONS 49 DFR 661. THESE REQUIREMENTS ARE DISTINCT AND DIFFERENT FROM THOSE OF THE BUY AMERICAN ACT OF 1933.

1	PERMIT/BID SET	11/08/19
NO.	SUBMISSION	DATE
CHECKED BY:		MKG
DRAWN BY:		RDH
PROJECT NUMBER:		1908
SHEET NAME: ENLARGED POWER FLOOR PLAN - EAST		
SHEET NUMBER:		E201



Optima # 19-0327