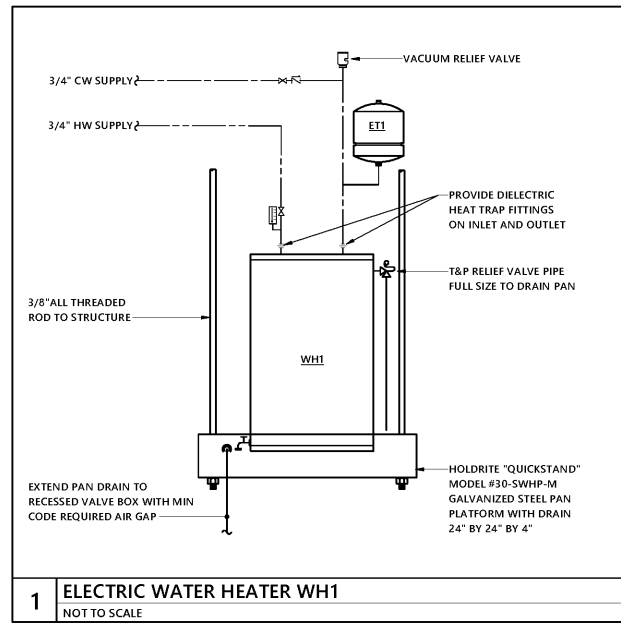
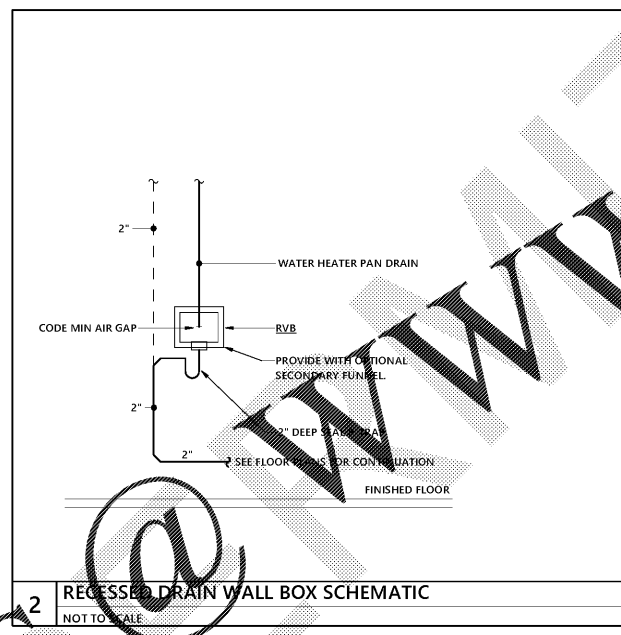


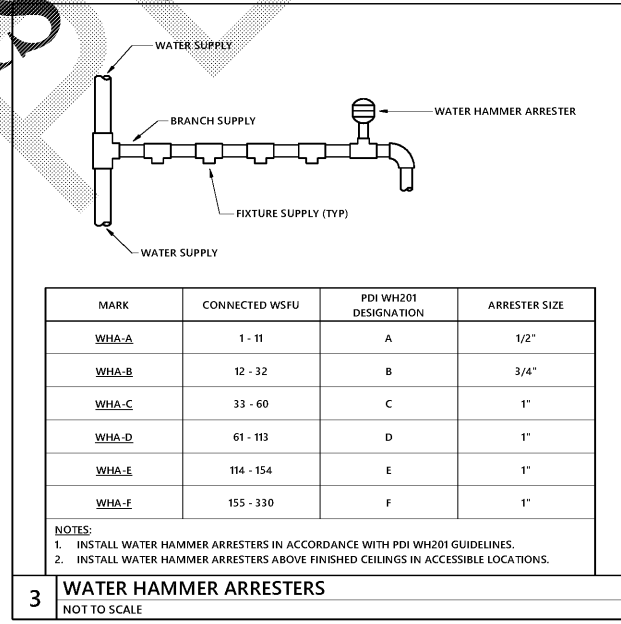
Order Plans @ BID



1 ELECTRIC WATER HEATER WH1
NOT TO SCALE



2 RECESSED DRAIN WALL BOX SCHEMATIC
NOT TO SCALE



3 WATER HAMMER ARRESTERS
NOT TO SCALE

STORAGE ELECTRIC WATER HEATER SCHEDULE									
MARK	DESCRIPTION	STORAGE (GAL)	GPH AT 80 °F RISE	ELECTRICAL DATA			SPECIFICATION	NOTES	
				KW	V	PH. HZ			
WH1	ELECTRIC, VERTICAL STORAGE, SUSPENDED	20.0	15.0	3.0	208	1 60	RHEEM EGGP20	1, 2, 3	

NOTES:
1. APPROVED MANUFACTURERS: A.O. SMITH, BRADFORD WHITE, RHEEM, STATE INDUSTRIES.
2. WATER HEATER SHALL MEET OR EXCEED THE REQUIREMENTS OF ASHRAE 90.1 AND THE NORTH CAROLINA ENERGY EFFICIENCY CODE.
3. SET WATER HEATER OUTLET TEMPERATURE TO 120 °F.

THERMAL EXPANSION TANK SCHEDULE						
MARK	DESCRIPTION	TOTAL VOLUME (GAL)	ACCEPTANCE VOLUME (GAL)	WEIGHT (LB)	SPECIFICATION	NOTES
ET1	DIAPHRAGM, THERMAL EXPANSION	3.5	2.3	22.0	WESSELS TTA-5	1, 2, 3

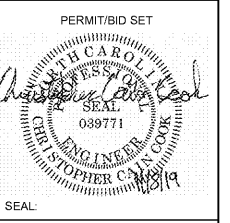
NOTES:
1. APPROVED MANUFACTURERS: AMTROL, BELL & GOSSETT, WATTS, WESSELS.
2. PROVIDE WITH PRESSURE GAUGE, AIR-CHARGE FITTINGS, AND TANK DRAIN; PRECHARGE TO 40.0 PSI.
3. MOUNT SECURELY AND INDEPENDENTLY FROM STRUCTURE.

PLUMBING FIXTURE SCHEDULE									
MARK	DESCRIPTION	W	V	CW	HW	SPECIFICATION	NOTES		
P1	WATER CLOSET CARRIER-MOUNTED, REAR OUTLET, WHITE VITREOUS CHINA ELONGATED BOWL, 128-GPF, BATTERY-POWERED, SENSOR-OPERATED FLUSH VALVE, PLASTIC, OPEN-FRONT SEAT WITHOUT COVER; ADJUSTABLE, HORIZONTAL CARRIER	4"	2"			FIXTURE: SLOAN ST-2459 FLUSH VALVE: SLOAN G2 8111-128 SEAT: CHURCH 9500SSCT CARRIER: WADE 311-AM1-M3	1		
P1A	WATER CLOSET - ADA COMPLIANT CARRIER-MOUNTED, REAR OUTLET, WHITE VITREOUS CHINA ELONGATED BOWL, 128-GPF, BATTERY-POWERED, SENSOR-OPERATED FLUSH VALVE, PLASTIC, OPEN-FRONT SEAT WITHOUT COVER; ADJUSTABLE, HORIZONTAL CARRIER	4"	2"			FIXTURE: SLOAN ST-2459 FLUSH VALVE: SLOAN G2 8111-128 SEAT: CHURCH 9500SSCT CARRIER: WADE 311-AM1-M3	1, 2		
P2A	URINAL - ADA COMPLIANT CARRIER-MOUNTED, REAR OUTLET, WHITE VITREOUS CHINA WASHOUT BOWL, 0.5-GPM, BATTERY-POWERED, SENSOR-OPERATED FLUSH VALVE, ADJUSTABLE CARRIER WITH UPPER AND LOWER BEARING PLATES	2"	2"	3/4"		FIXTURE: SLOAN SU-1009 FLUSH VALVE: SLOAN G2 8186 CARRIER: WADE 402-AM1-M3	1, 2		
P3A	LAVATORY - ADA COMPLIANT NOMINAL 16" BY 16" UNDERMOUNT, WHITE VITREOUS CHINA BASE WITH FRONT OVERFLOW, 0.5-GPM, BATTERY-POWERED, SENSOR-OPERATED FAUCET; PROVIDE WITH THERMOSTATIC MIXING VALVE BY SAME MANUFACTURER AS FAUCET; OPEN GRID STRAINER	2"	2"	1/2"	1/2"	FIXTURE: AMERICAN STANDARD "STUDIO CARRE" 0426.000 FAUCET: SLOAN "BASYS" EPX680.110.0000 CP MIXING VALVE: ASSE 1070 COMPLIANT THERMOSTATIC MIXING VALVE	3		
P4A	SINGLE STATION ELECTRIC WATER COOLER WITH BOTTLE-FILLING STATION - ADA COMPLIANT SURFACE MOUNTED, VANDAL-RESISTANT STAINLESS STEEL FINISH, INTEGRAL WATER FILTER, PLATE-TYPE CARRIER, BOTTLE-FILLING STATION SUPPORT	2"	2"	1/2"		FIXTURE: HALSEY TAYLOR "HYDROBOOST" HTHBHVR8 CARRIER: WADE 403-BFS-M3	1		
PSA	BREAK ROOM SINK - ADA COMPLIANT NOMINAL 18" BY 18" DROP-IN, SINGLE BOWL, STAINLESS STEEL; 1.5-GPM, HIGH-ARC FAUCET, WRISTBLADE HANDLES; BASKET STRAINER WITH PLUG	2"	2"	1/2"	1/2"	FIXTURE: ELKAY "LUSTERTONE" LRAD151765PD FAUCET: ELKAY LKD2432BHC	3		
PSB	WELLNESS SINK - ADA COMPLIANT NOMINAL 15" BY 18" BY 6.5" DROP-IN, SINGLE BOWL, STAINLESS STEEL; 1.5-GPM, HIGH-ARC FAUCET, WRISTBLADE HANDLES, OPEN GRID STRAINER	2"	2"	1/2"	1/2"	FIXTURE: ELKAY "LUSTERTONE" LRAD151765PD FAUCET: ELKAY LKD2432BHC	3		
RVB	RECESSED VALVE BOX WITH DRAIN WHITE POWDER-COATED STEEL RECESSED BOX WITH TRIM PLATE	2"	2"	1/2"		FIXTURE: GUY GRAY MWB-19 STOP: QUARTER-TURN ARRESTER VALVE SUPPLY: BRAIDED STAINLESS STEEL HOSE FIXTURE: ZURN Z1441-BP-VP			
WCO	WALL CLEANOUT BRONZE PLUG WITH ROUND STAINLESS STEEL ACCESS COVER	SEE DWG					4		
WHA	WATER HAMMER ARRESTER ASSE 1010 COMPLIANT, PDI WH201 COMPLIANT					FIXTURE: WATTS LF15M2 SERIES	5		

NOTES:
1. REFER TO ARCHITECTURAL PLANS FOR MOUNTING HEIGHT(S).
2. INSTALL FLUSH VALVE WITH MANUAL FLUSHING OPERATOR ON ACCESSIBLE SIDE OF FIXTURE.
3. PROVIDE WITH ADA-COMPLIANT SUPPLY AND DRAIN INSULATION TRIM KIT WHERE TRIM IS EXPOSED TO USERS.
4. INSTALL AT 12" ABOVE FINISHED FLOOR.
5. REFER TO DETAIL 3/P002 FOR SIZING AND INSTALLATION REQUIREMENTS.

APPROVED MANUFACTURERS	PRODUCT TYPE	APPROVED EQUALS
VITREOUS CHINA WATER COOLERS STAINLESS STEEL FLUSH VALVES FAUCETS WATER CLOSET SEATS WATER SPECIALTIES FIXTURE TRIM CARRIERS, CLEANOUTS		AMERICAN STANDARD, KOHLER, SLOAN, TOTO, ZURN ELKAY, HALSEY TAYLOR, HAWS, OASIS ADVANCE TABCO, ELKAY, JUST MANUFACTURING, KOHLER AMERICAN STANDARD, KOHLER, SLOAN, TOTO, ZURN CHICAGO, DELTA COMMERCIAL, KOHLER, SLOAN, T&S BRASS, TOTO, ZURN AMERICAN STANDARD, CHURCH, KOHLER, SLOAN, TOTO, ZURN IPS CORPORATION, PRECISION PLUMBING PRODUCTS, SIOUX CHIEF BRASSCRAFT, DEERBORN BRASS, KEENEY, MCGUIRE, ZURN JAY R. SMITH, JOSAM, WADE, WATTS, ZURN

BUY AMERICA PROGRAM REQUIREMENTS
ALL PRODUCTS PROVIDED ON THIS PROJECT MUST BE MANUFACTURED IN COMPLIANCE WITH THE BUY AMERICA PROGRAM FOR FEDERALLY FUNDED TRANSPORTATION PROJECTS PER CODE OF FEDERAL REGULATIONS 49 DFR 661. THESE REQUIREMENTS ARE DISTINCT AND DIFFERENT FROM THOSE OF THE BUY AMERICAN ACT OF 1933.



Union Station Mezzanine Office Fit Up
City of Raleigh Transit Division
510 W Martin St, Raleigh, NC 27601

1	PERMIT/BID SET	11/08/19
NO.	SUBMISSION	DATE
CHECKED BY:	JWM	
DRAWN BY:	CCC	
PROJECT NUMBER:	1908	
SHEET NAME:	PLUMBING SCHEDULES & DETAILS	
SHEET NUMBER:	P002	