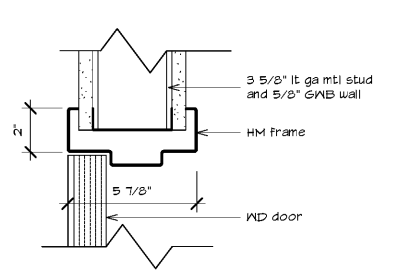
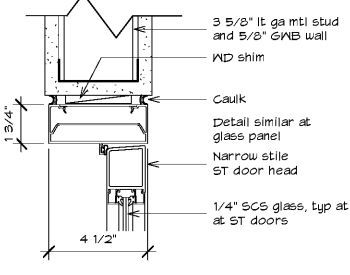
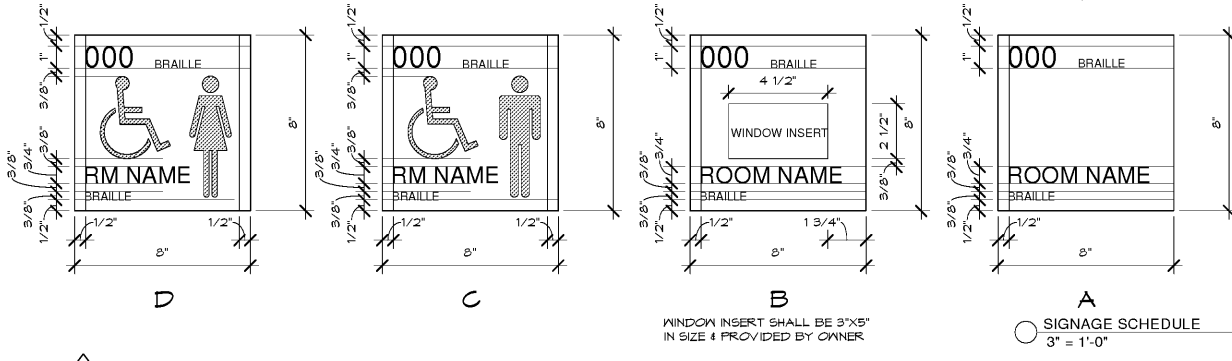
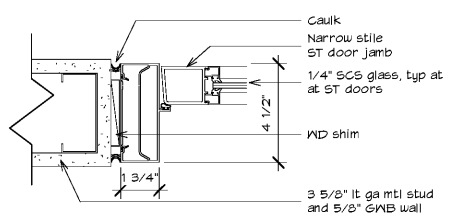


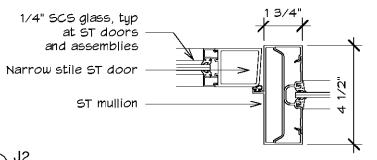
- SIGNAGE NOTES**
- REFER TO DOOR SCHEDULE FOR ROOM NUMBER, ROOM NAME, & SIGNAGE LOCATION, UON.
  - SIGNAGE SHALL COMPLY WITH ANSI A117.1-2017.
  - SIGNAGE SHALL BE INSTALLED @ 48" AFF MEASURED TO THE BOTTOM OF SIGNAGE, UON.
  - SIGNAGE SHALL BE INSTALLED @ THE LATCH SIDE OF A SINGLE DOOR OR RIGHT HAND SIDE OF A DOUBLE DOOR, UON. 18"x18" CLEARANCE SHALL BE LOCATED IN FRONT OF SIGNAGE.
  - WHERE THERE IS NO WALL SPACE ON THE LATCH SIDE OF A SINGLE DOOR, SIGNS SHALL BE ON THE NEAREST ADJACENT WALL.



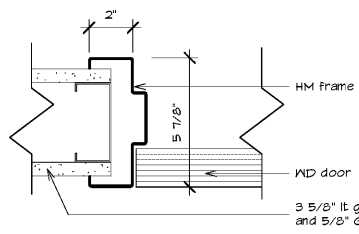
1 H1  
3" = 1'-0"



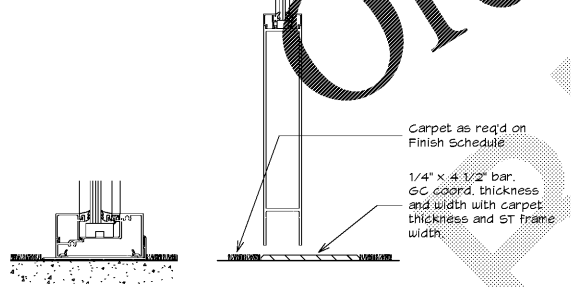
2 H3  
3" = 1'-0"



3 J1  
3" = 1'-0"



5 J3  
3" = 1'-0"



6 S1  
3" = 1'-0"

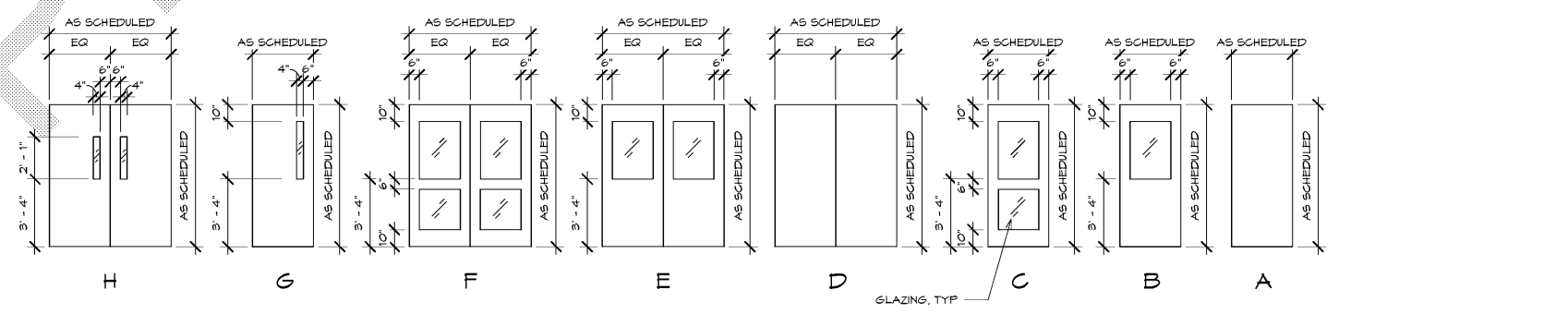
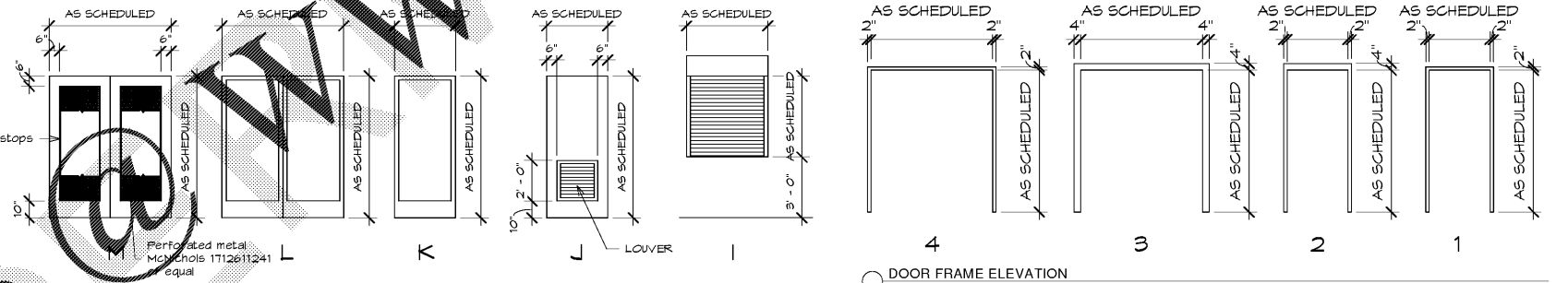
7 S2  
3" = 1'-0"

TAG	GLAZING DESCRIPTION
IC	1" INSULATED CLEAR
IE	1" INSULATED LOW-E
IES	1" INSULATED LOW-E SAFETY
IES	1" INSULATED LOW-E SOLAR
IES	1" INSULATED LOW-E SOLAR SAFETY
SC	1/4" SINGLE CLEAR
SS	1/4" SINGLE CLEAR SAFETY
IF	1" INSULATED FIBER-FILLED TRANSLUCENT
SN	1/4" SINGLE CLEAR WIRED
IN	1" SINGLE CLEAR WIRED

DOOR FRAME MATERIAL LEGEND	
ST	STOREFRONT
THM	THERMAL-BROKEN HOLLOW METAL
HM	HOLLOW METAL

DOOR MATERIAL LEGEND	
ST	STOREFRONT DOOR
WD	WOOD DOOR
HM	HOLLOW METAL DOOR
IM	INSULATED METAL DOOR

DOOR NUMBER	DOORS										COMMENTS	SIGNAGE			
	WIDTH	HEIGHT	MATERIAL & TYPE	GLAZING	MATERIAL & TYPE	FRAMES			HARDWARE	ROOM #		ROOM NAME	SIGNAGE TYPE		
R						JAMB	HEAD	SILL							
200A	3'-0"	7'-0"	ST-K	SCS	ST	J1 & J2	H1	S2	O3		See 3/A402 for frame				
201	3'-0"	7'-0"	WD-D		HM-4	J3	H3	-	O6						
202	3'-0"	7'-0"	WD-A		HM-1	J3	H3	-	O7				202	A/V Storage	A
203	3'-0"	7'-0"	ST-K	SCS	ST	J1 & J2	H1	S2	O4		See 13/A402 for frame		203	Office	B
205	6'-0"	7'-0"	ST-L	SCS	ST	J1 & J2	H1	S2	O5		See 1/A402 for frame		205	Conference	A
206A	3'-0"	7'-0"	WD-A		HM-1	J3	H3	-	O8				206	Conference	A
206B	3'-0"	7'-0"	ST-K	SCS	ST	J1 & J2	H1	S2	O9		See 11/A402 for frame		206	Conference	A
206C	3'-0"	7'-0"	ST-K	SCS	ST	J1 & J2	H1	S2	O3		See 11/A402 for frame		206	Conference	A
210	3'-0"	7'-0"	ST-K	SCS	ST	J1 & J2	H1	S2	O2		Card Reader; See A/A403 for frame				
212	3'-0"	7'-0"	ST-K	SCS	ST	J1	H1	S2	O4		See 3/A402 for frame		212	Office	B
214	3'-0"	7'-0"	ST-K	SCS	ST	J1	H1	S2	O4		See 3/A403 for frame		214	Office	B
216	3'-0"	7'-0"	ST-K	SCS	ST	J1 & J2	H1	S2	O4		See 3/A403 for frame		216	Office	B
218	3'-0"	7'-0"	ST-K	SCS	ST	J1 & J2	H1	S2	O4		See 3/A403 for frame		218	Office	B
220	3'-0"	7'-0"	ST-K	SCS	ST	J1 & J2	H1	S2	O4		See 3/A403 for frame		220	Office	B
222	3'-0"	7'-0"	ST-K	SCS	ST	J1 & J2	H1	S2	O4		See 3/A403 for frame		222	Office	B
224	3'-0"	7'-0"	WD-D		HM-4	J3	H3	-	O7				224	BRT Storage	A
230	3'-0"	7'-0"	ST-K	SCS	ST-1	J1	H1	-	O3						
232	3'-0"	7'-0"	WD-M		HM-4	J3	H3	-	O6		Provide stops for 1/4" metal screen				
234	3'-0"	7'-0"	WD-A		HM-1	J3	H3	-	O9				234	Privacy	A
236	3'-0"	7'-0"	WD-A		HM-1	J3	H3	-	O10				236	Women	D
238	3'-0"	7'-0"	WD-A		HM-1	J3	H3	-	O10				238	Men	C
240	3'-0"	7'-0"	WD-A		HM-1	J3	H3	-	O11				240	Electrical	A
A102	3'-0"	7'-0"							X		Existing; No Work				
A200A	7'-0"	7'-0"							X		Existing; Add access control				
A200B	3'-0"	7'-0"							X		Existing; Add access control				
A203	3'-0"	7'-0"							X		Existing; No Work				
AP1	2'-0"	2'-0"							X		Exist. access panel				
AP2	2'-0"	2'-0"							X		Exist. access panel				
ST03A	6'-0"	7'-0"							X		Existing; No Work				
ST03B	6'-0"	7'-0"							X		Existing; No Work				
ST03C	3'-0"	7'-0"							X		Existing; No Work				



- DOOR NOTES**
- EXTERIOR DOOR FRAMES SHALL BE FILLED W/ LOW-PRESSURE POLY-URETHANE SPRAY FOAM SEALANT.
  - FIRE RATED DOOR FRAMES SHALL BE FILLED W/ MINERAL FIBER INSULATION.
  - "CR" DENOTES CARD READER. CARD READERS SHALL BE PROVIDED & INSTALLED BY OWNER'S VENDOR. GC TO PROVIDE CONDUITS FOR WIRING. COORDINATE W/ OWNER.
  - DOOR TYPE "B" SHALL BE PROVIDED W/ HORIZONTAL BLINDS, UON.

**BUY AMERICAN PROGRAM REQUIREMENTS**

ALL PRODUCTS PROVIDED ON THIS PROJECT MUST BE MANUFACTURED IN COMPLIANCE WITH THE BUY AMERICAN PROGRAM FOR FEDERALLY FUNDED TRANSPORTATION PROJECTS PER CODE OF FEDERAL REGULATIONS 49 CFR 661. THESE REQUIREMENTS ARE DISTINCT AND DIFFERENT FROM THOSE OF THE BUY AMERICAN ACT OF 1933.



Bid / Permit Documents

SEAL: 5/1/2017

Union Station Mezzanine Office Fit Up  
City of Raleigh Transit Division  
510 W Martin St, Raleigh, NC 27601

10		
9		
8		
7		
6		
5		
4		
3		
2		
1	SD	3/14/17

CHECKED BY: -  
DRAWN BY: -  
PROJECT NUMBER: 1908

SHEET NAME: DOOR SCHEDULE  
SHEET NUMBER: A611

Order Plans