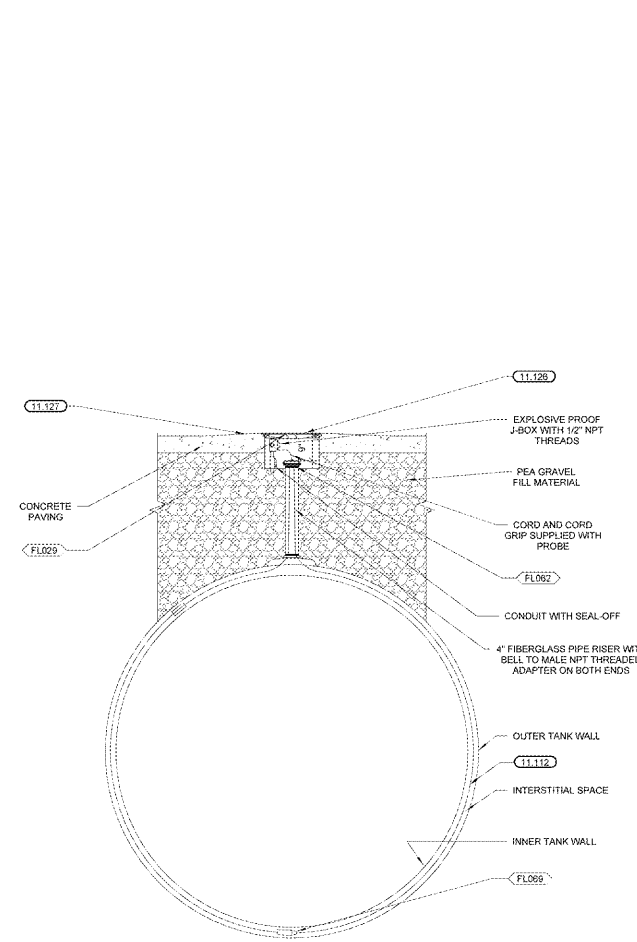


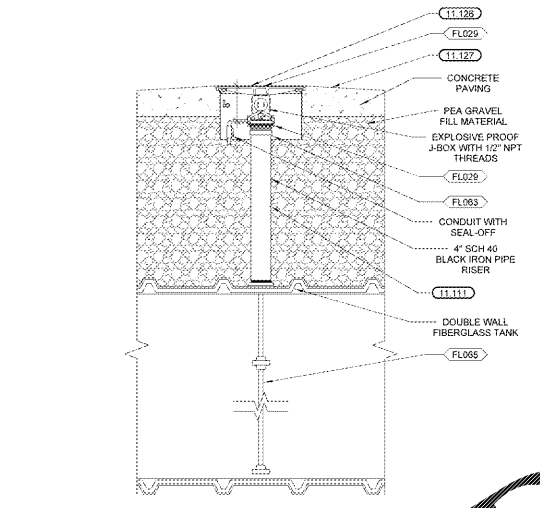
MANHOLE COVER PAINT SCHEDULE	
RED	SUPER UNLEADED PRODUCT FILL
WHITE	UNLEADED PRODUCT FILL
ORANGE	VAPOR RECOVERY
YELLOW	DIESEL PRODUCT FILL
BLACK	TANK PROBE, DIESEL VENT CONNECTION (TOP AND BOTTOM SIDE)

NOTE: PAINT COLOR TO MATCH PRODUCT MARKER TAG OF EACH PRODUCT

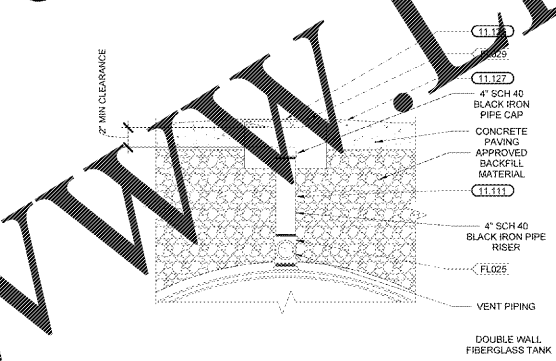
KEYNOTES	
11.109	OVERFILL PREVENTION VALVE INSTALLED PER MANUFACTURER'S SPECIFICATIONS. SET OVERFILL DEVICE FOR RESTRICTION OF FLOW AT OR BELOW 90% TANK CAPACITY AND POSITIVE SHUT-OFF AT 83% TANK CAPACITY TO MEET NFPA 30 REQUIREMENTS
11.110	EMBOSSED NAMEPLATE HOLDER WITH TANK SIZE IN GALLONS
11.111	ALL UNDERGROUND STEEL PIPE AND FITTINGS SHALL BE WRAPPED UP TO A POINT SIX (6) INCHES ABOVE GROUND IN THE FOLLOWING MANNER: APPLY SCOTCHWRAP PIPE INSULATION PUTTY AT ALL HIGH-IRREGULAR SURFACES SUCH AS FITTINGS SO AS TO PROVIDE A UNIFORM SURFACE FOR THE PRIME COAT TAPE WRAP. APPLY SCOTCHWRAP PIPE RISER AT AN AVERAGE RATE OF 350 SQ. FT. PER GALLON. APPLY SCOTCHWRAP #51 TAPE (20 MILS) WITH WIDTH AND OVERLAP AS FOLLOWS: PIPE DIA(IN) TAPE WIDTH OVERLAP 1 1/2 2 3/8 2 2 3/8 4 4 1/2
11.112	PULL CORD-DO NOT CUT IT!
11.113	4" DIAMETER SCHEDULE 40 PVC WITH .020 WELLS SCREEN MUST BE FACTORY SLOTTED. NO FIELD SLOTTING ALLOWED
11.118	2" SCH 40 BLACK IRON UNION PAINT TRAFFIC
11.119	2" SCH 40 BLACK IRON PIPE PRIME AND PAINT TRAFFIC
11.120	FILL BOTTOM OF MANHOLE WITH CEMENT TO BOTTOM OF CONCRETE VENT COLLAR
11.121	PLACE CONCRETE COLLAR AFTER PLACEMENT BOLLARDS AND VENT PIPING
11.122	4" STEEL ANGLE OR 1 1/4" X 1 1/4" UNISTRUT ATTACH TO BOLLARDS AND PAINT TRAFFIC YELLOW
11.123	ATTACH VENT PIPING TO ANGLE WITH PIPE CLAMPS AND PAINT TRAFFIC YELLOW (2) PER VENT PIPE
11.124	4" STANDARD PIPE BOLLARD. CEMENT FILLED WITH TOP PARGED SMOOTH. PAINT TRAFFIC YELLOW
11.125	PAINT MANHOLE COVER REFER TO MANHOLE COVER PAINT SCHEDULE
11.127	SET RIM OF MANHOLE 1" ABOVE SURROUNDING GRADE. SLOPE CONCRETE AWAY FROM MANHOLE AT MAXIMUM 1/4" PER FOOT.



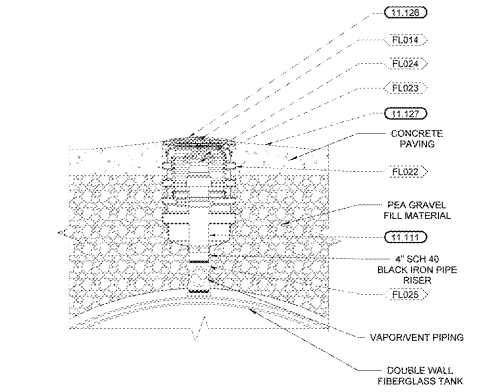
6 DRY ANNULAR SPACE MONITOR
NTS



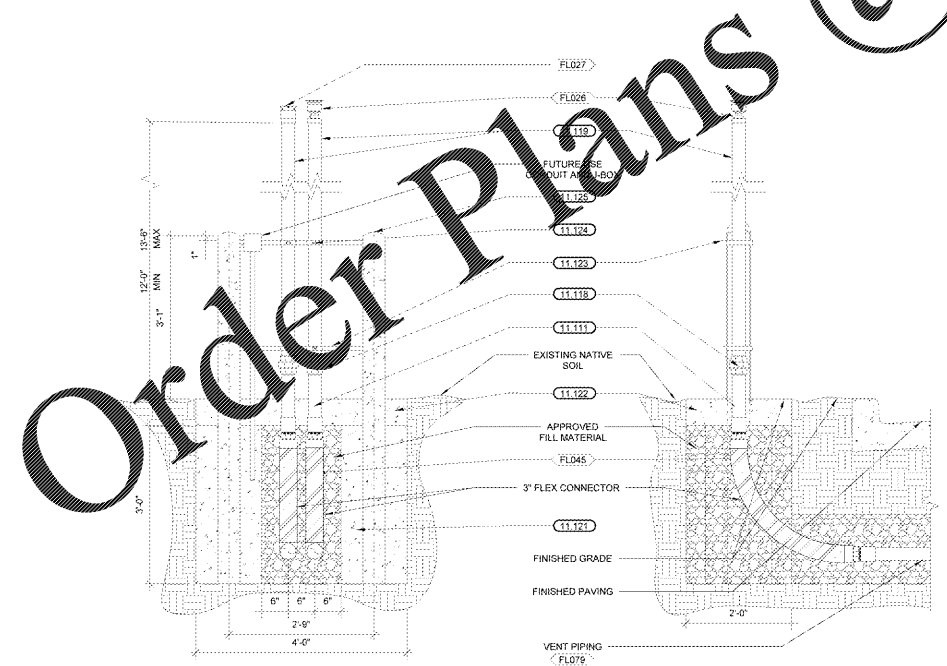
7 TANK LEVEL MONITOR DETAIL
NTS



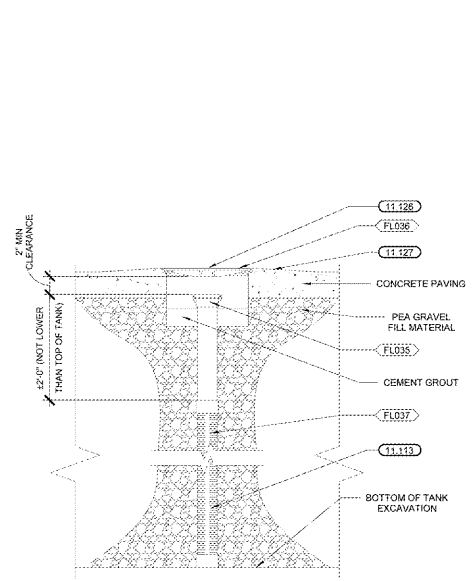
5 DIESEL VENT PIPING CONNECTION
NTS



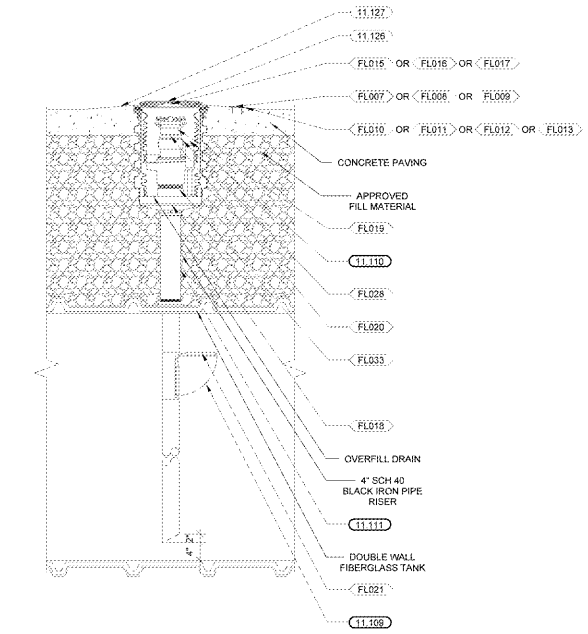
4 UNLEADED VAPOR RECOVERY DETAIL
NTS



3 VENT RISER DETAIL
NTS



2 OBSERVATION WELL DETAIL
NTS



1 PRODUCT FILL DETAIL
NTS

Order Plans @ WWW.LDILine.com

REGULATION FOR RELEASE
THIS DOCUMENT IS THE PROPERTY OF LDILINE.COM. IT IS TO BE USED ONLY FOR THE PROJECT AND SITE SPECIFICALLY IDENTIFIED ON THE DRAWING. IT IS NOT TO BE REPRODUCED, COPIED, OR TRANSMITTED IN ANY FORM OR BY ANY MEANS, ELECTRONIC OR MECHANICAL, INCLUDING PHOTOCOPYING, RECORDING, OR BY ANY INFORMATION STORAGE AND RETRIEVAL SYSTEM. WITHOUT THE WRITTEN PERMISSION OF LDILINE.COM.

CONSULTANTS
David P. Kimball
OWNER
SAMS CLUB
MANHOLE COVER PAINT SCHEDULE
DATE: 03/20/19
DRAWN BY: DAD
FILE NAME: FST5
PROJECT NO: 102516
JOB NUMBER: 3407T PHOTO 3448-102

ANDERSON,
SC
CLUB#: 6463

ISSUE BLOCK

CHECKED BY: JMS
DRAWN BY: DAD
FILE NAME: FST5
PROTO CYCLE: 102516
DOCUMENT DATE: 08/08/19

NOT FOR CONSTRUCTION

TANK AND VENT PIPING DETAILS

SHEET
FST5