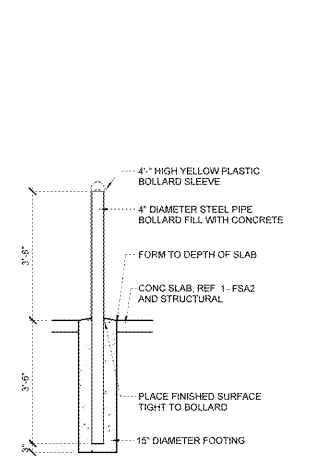


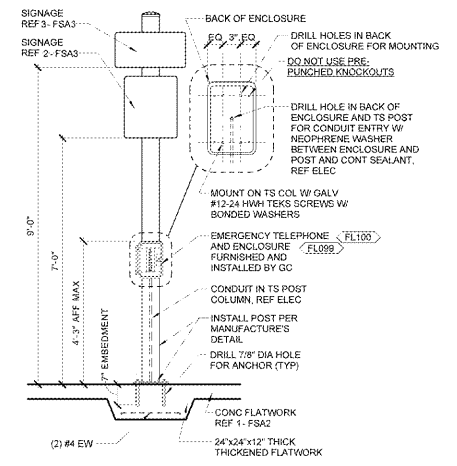
| COLOR LEGEND | |
|--------------|-------------------------|
| P202 | GRAY SHINGLE SW #7670 |
| P203 | TURBINE BRONZE SW #7048 |

- SHEET NOTES**
- REFER TO MEP FOR ADDITIONAL INFORMATION. REF SHEET FST6 FOR EQUIPMENT ITEMS (FLXX) NOT SCHEDULED ON FSA2.
 - 2A:408°C, 13 LB MINIMUM RATED FIRE EXTINGUISHERS SHALL BE PROVIDED BY G.C. IN ACCORDANCE WITH NFPA 10. FIRE EXTINGUISHER LOCATIONS AND SIZE SHALL BE APPROVED BY THE OFFICE OF THE FIRE MARSHAL PRIOR TO OCCUPANCY.

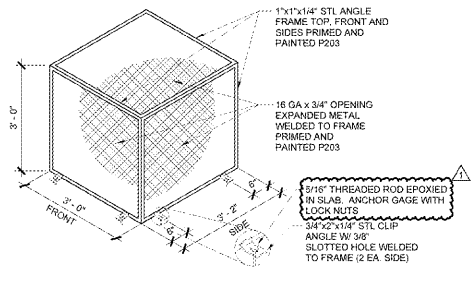
RHA ARCHITECTS
 RHA Architects
 211 N. Reedwood Street, Suite 222
 Dallas, Texas 75202
 T: (214) 749-0526



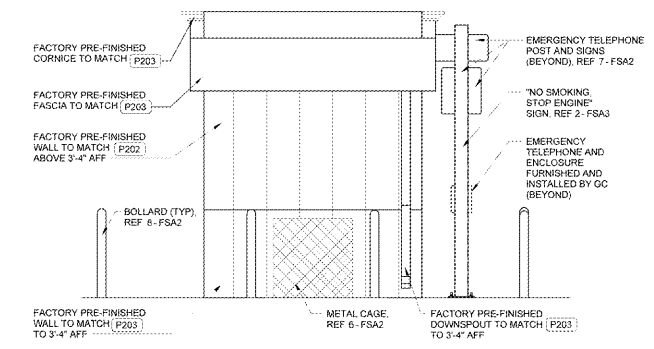
8 BOLLARD
 1/2" = 1'-0"



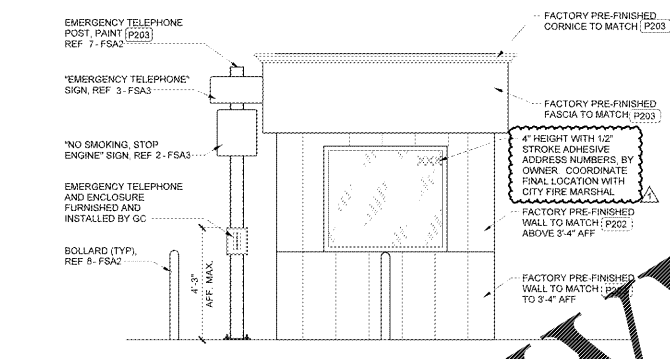
7 EMERGENCY TELEPHONE POST
 1/2" = 1'-0"



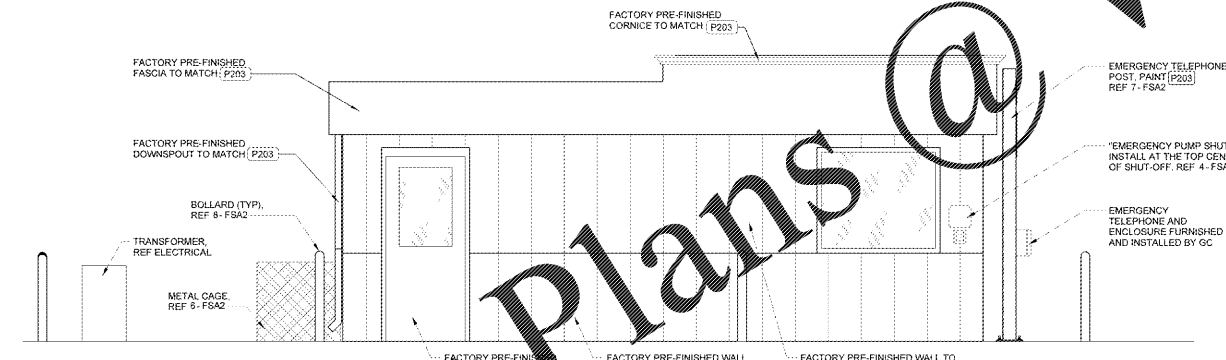
6 CONDENSING UNIT CAGE DETAIL
 1/2" = 1'-0"



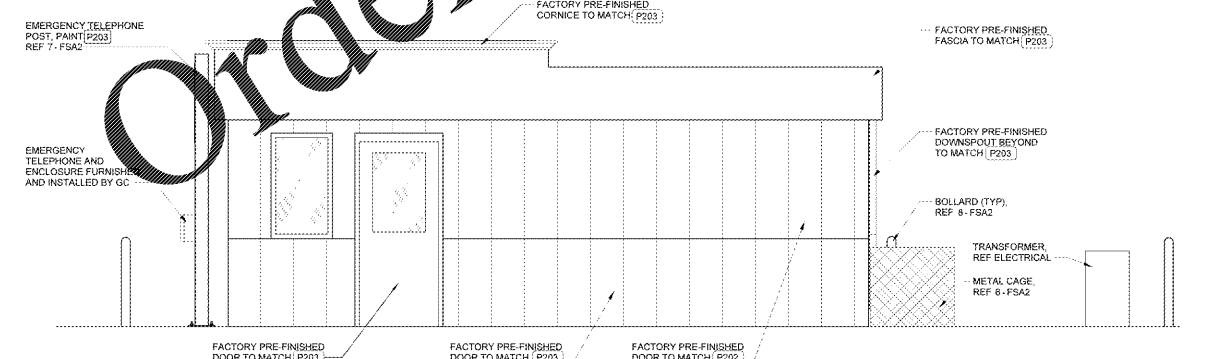
5 ELEVATION
 3/8" = 1'-0"



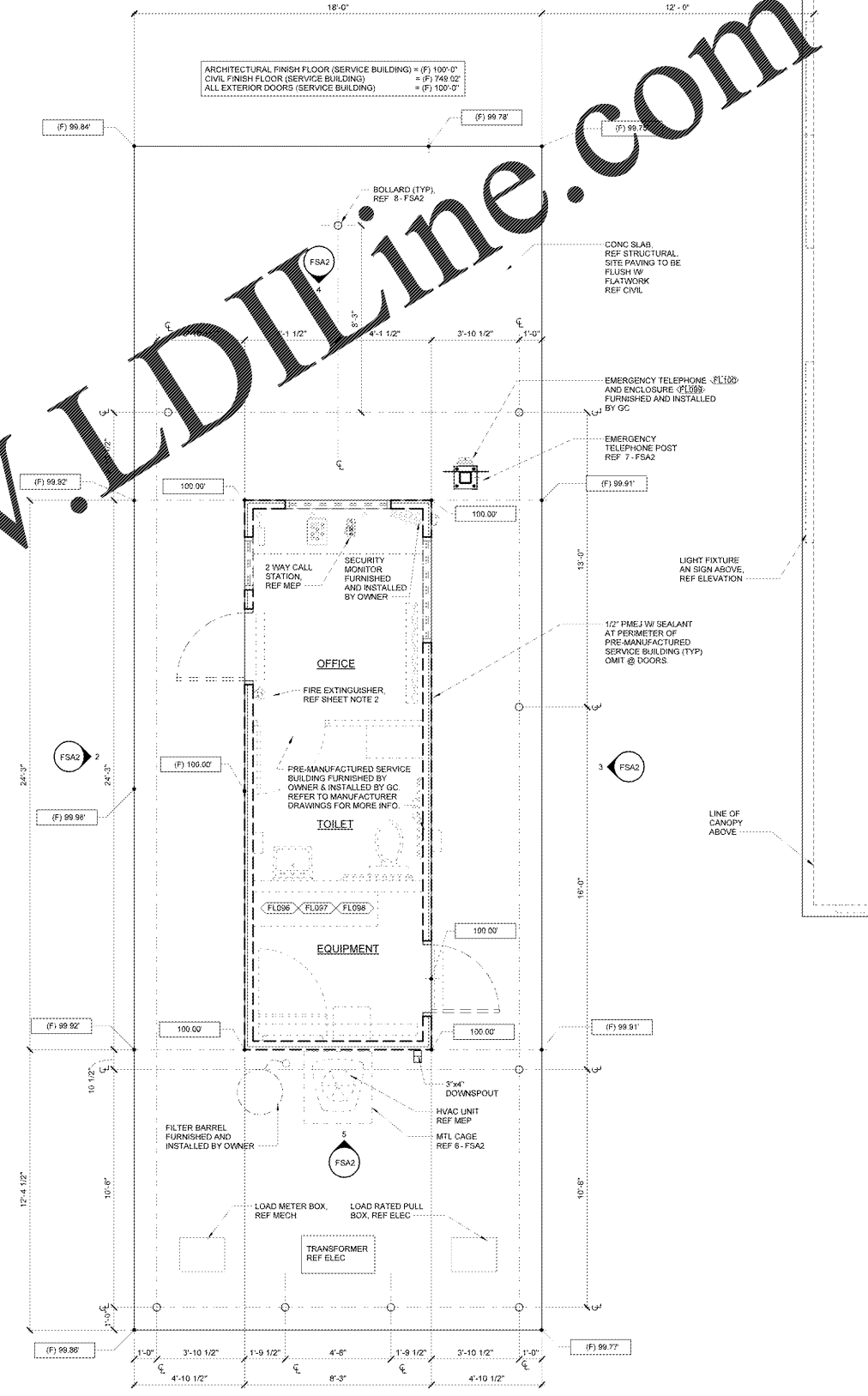
4 ELEVATION
 3/8" = 1'-0"



3 ELEVATION
 3/8" = 1'-0"



2 ELEVATION
 3/8" = 1'-0"



1 KIOSK PLAN
 3/8" = 1'-0"

Order Plans @ www.LDILine.com

STIPULATION FOR REUSE
 THE DRAWINGS AND ALL INFORMATION CONTAINED HEREIN ARE THE PROPERTY OF RHA ARCHITECTS. NO PART OF THESE DRAWINGS OR INFORMATION SHALL BE REPRODUCED, COPIED, OR TRANSMITTED IN ANY FORM OR BY ANY MEANS, ELECTRONIC OR MECHANICAL, INCLUDING PHOTOCOPYING, RECORDING, OR BY ANY INFORMATION STORAGE AND RETRIEVAL SYSTEM, WITHOUT THE WRITTEN PERMISSION OF RHA ARCHITECTS.

CONSULTANTS

Sam's CLUB
 ANDERSON, SOUTH CAROLINA
 CLUB NO. 6463
 JOB NUMBER: 181909
 PHOTO: 1/38 FILEL

ISSUE BLOCK

| REV | DATE | DESCRIPTION |
|-----|----------|-------------|
| 1 | 09/26/19 | REV #1 |

CHECKED BY: PDB
 DRAWN BY: SAB
 FILE NAME: 192-FSA2
 PHOTO CYCLE: 0125/2018
 DOCUMENT DATE: 08/09/19

NOT FOR CONSTRUCTION

SERVICE BUILDING

FSA2