

**MOUNTING HOLE PATTERNS FOR ILLUMINATED SIGN INSTALLATION PROVIDED BY WALMART**

10-24 x 1-1/2" HEX BOLTS AND WASHERS BY SIGN SUPPLIER

INSTALL HEX BOLTS THRU WASHER AND LETTER BACK PRIOR TO INSTALLATION BY SIGN INSTALLER

17/8" DIA HOLE FILLED WITH ADHESIVE SEALANT. COAT ALL-THREAD STUD WITH ADHESIVE SEALANT PRIOR TO WALL ATTACHMENT BY SIGN INSTALLER

INDIVIDUAL PLASTIC ILLUMINATED CHANNEL LETTERS BY SIGN SUPPLIER

INSTALL LETTER FACES W/ SET SCREWS, TYP BY SIGN INSTALLER

12" IS ALL-THREAD WASHER AND NUT W/ 1/2" DIA HOLE FILLED W/ ADHESIVE SEALANT AT DIGITAL PRICE SIGN (MIN OF FOUR REQUIRED)

PREFINISHED COMPOSITE METAL PANEL BY BUILDING CONTRACTOR

METAL BRACING BY BUILDING CONTRACTOR

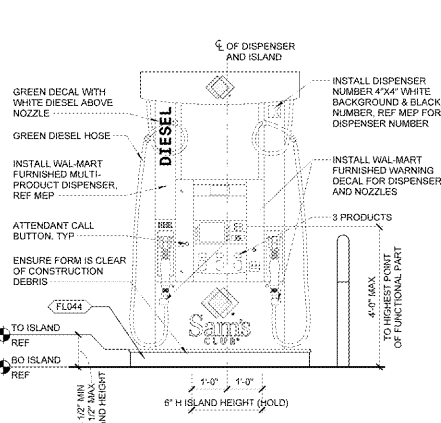
INSTALL LOCK WASHER AND NUT, TYP BY SIGN INSTALLER

3/4" CONDUIT W/ WATER TIGHT FITTING AND GENT SEALANT AT DIGITAL PRICE SIGN (OMIT AT SIM)

17/8" DIA HOLE FILLED WITH ADHESIVE SEALANT FOR WIRE FEED, TYP BY SIGN INSTALLER

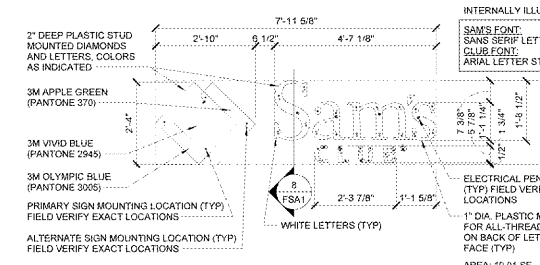
"ADHESIVE SEALANT" IS TO BE PRODUCT UN-950 BY LIQUID NAILS OR SIMILAR POLYURETHANE CONSTRUCTION ADHESIVE, MEETING ASTM D3498 AND CSI STANDARDS. EXTERIOR APPLICATION. WEATHER RESISTANT, LOW VOC, WITH A MINIMUM SHEAR STRENGTH OF 250 PSI

**8 SIGN ATTACHMENT**  
1 1/2" x 1'-0"

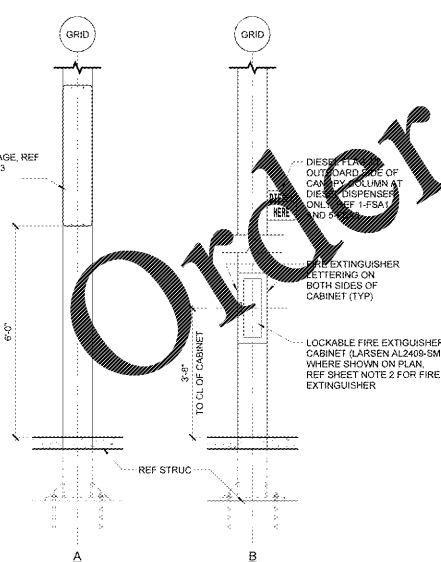


**7 DIESEL AT TANK END**  
1 1/2" x 1'-0"

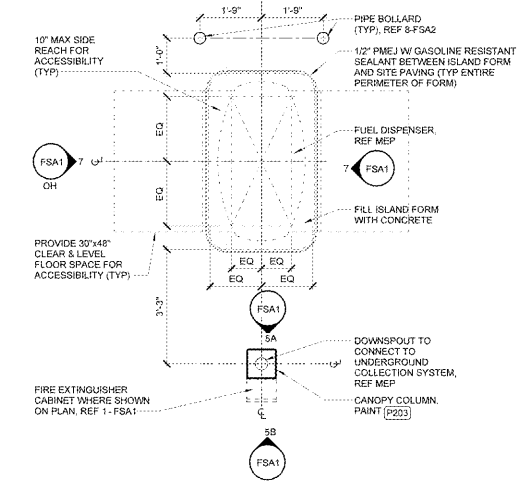
NOTE TO SIGN INSTALLER: ALL PRIMARY MOUNTING HOLES MUST BE UTILIZED. IF MOUNTING THROUGH PRIMARY HOLE IS OBSTRUCTED BY REBAR, METAL STUDS, CHANNELS OR OTHER MISG METAL SEAL, PRIMARY HOLE IN SIGN CAN AND MOUNT THROUGH THE NEAREST ALTERNATE MOUNTING HOLE. PRIMARY HOLES ARE INDICATED WITH PREDRILLED HOLES THROUGH WASHERS. ALTERNATE HOLES ARE INDICATED WITH WASHERS ONLY OR ARE OTHERWISE MARKED.



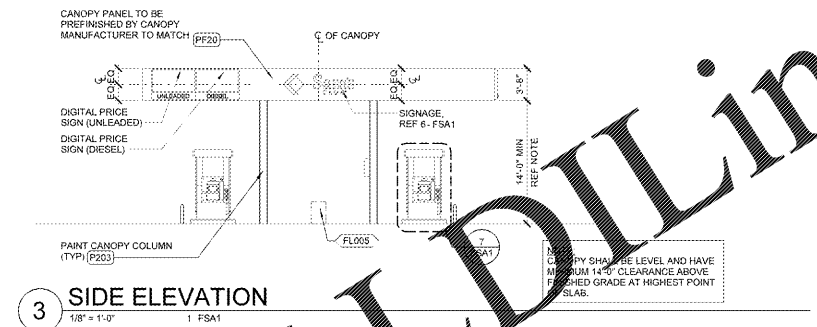
**6 SAM'S CLUB**  
1 1/2" x 1'-0"



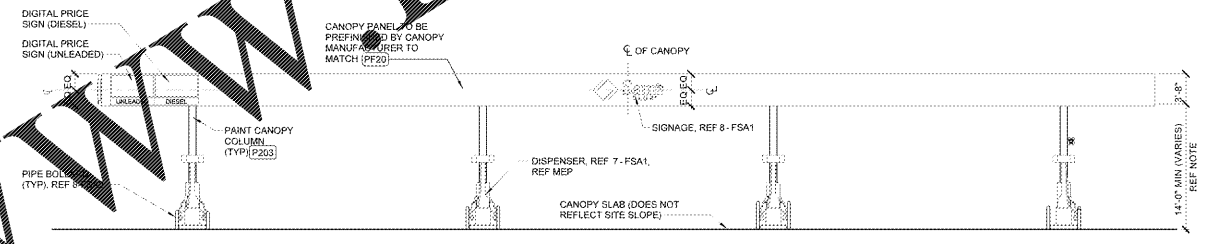
**5 COLUMN ELEVATIONS**  
1 1/2" x 1'-0"



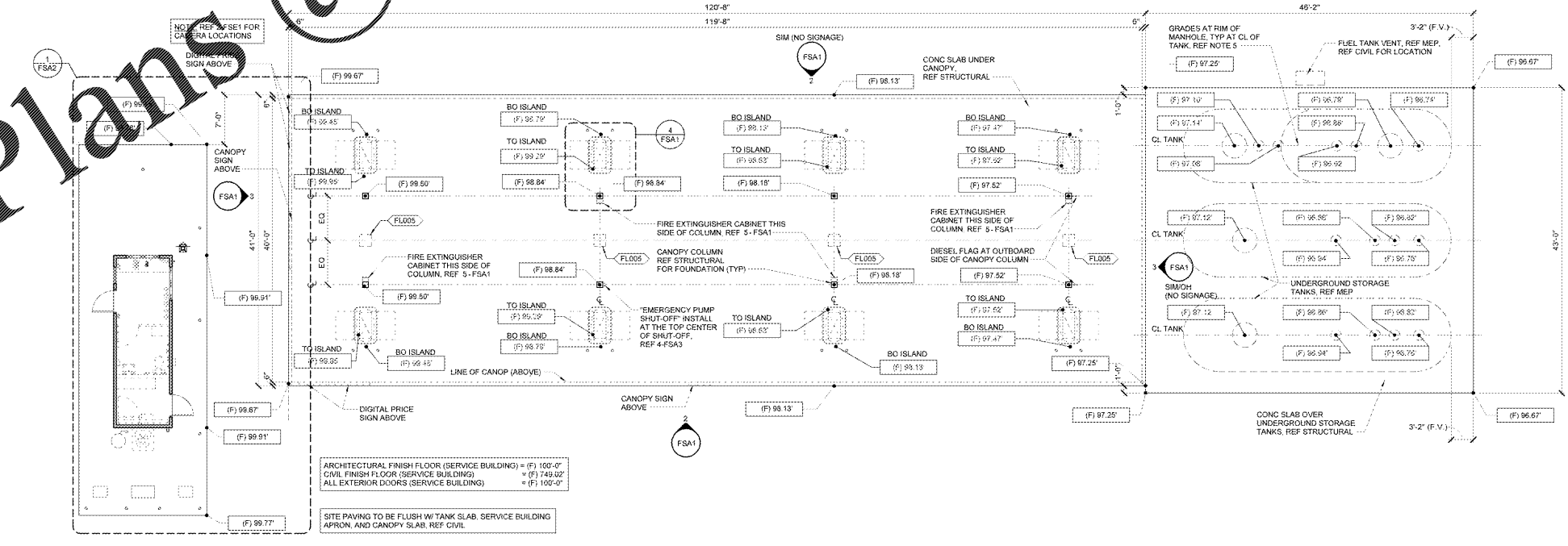
**4 DISPENSER ISLAND PLAN**  
1 1/2" x 1'-0"



**3 SIDE ELEVATION**  
1 1/8" x 1'-0"



**2 FRONT AND BACK ELEVATION**  
1 1/8" x 1'-0"



**1 OVERALL PLAN**  
1 1/8" x 1'-0"

**SHEET NOTES**

- REFER TO MEP FOR ADDITIONAL INFORMATION. REF SHEET FST16 FOR EQUIPMENT ITEMS (FLXXX) NOT SCHEDULED ON FSA1.
- 40BC, 13 LB MINIMUM RATED FIRE EXTINGUISHERS SHALL BE PROVIDED BY G.C. IN ACCORDANCE WITH NFPA 10. FIRE EXTINGUISHER LOCATIONS AND SIZE SHALL BE APPROVED BY THE OFFICE OF THE FIRE MARSHAL PRIOR TO OCCUPANCY.
- ALL SIGNAGE MOUNTED ON CANOPY FASCIA (INCLUDING PRICE SIGN) IS FURNISHED AND INSTALLED BY WAL-MART.
- REFER TO CANOPY MANUFACTURER DRAWINGS FOR MORE INFORMATION.
- SPOT GRADES INDICATE RIM OF MANHOLE 1" ABOVE SURROUNDING GRADE. FIELD VERIFY SLOPE CONCRETE AWAY FROM MANHOLE AT MAXIMUM 1/4" PER FOOT. REF MEP.

**SIGNS**

CANOPY SIGNAGE	AREA
1. (4) x "SAM'S CLUB" SIGN - CANOPY	(4) x 19.01 SF
2. (4) x DIGITAL PRICE SIGN (UNLEADED)	(4) x 17.33 SF
3. (4) x DIGITAL PRICE SIGN (DIESEL)	(4) x 17.33 SF
<b>TOTAL SIGNAGE</b>	<b>214.68 SF</b>

**CANOPY LEGS**

PF23	"URBANE BRONZE" FINISH
PF20	MATCH ALCOA "FIRE ELEVATION"



RHA Architects  
211 N. Reedwood Street, Suite 222  
Dallas, Texas 75202  
T: (214) 749-0525

STIPULATION FOR REUSE:  
THIS DRAWING AND ALL INFORMATION CONTAINED HEREIN ARE THE PROPERTY OF RHA ARCHITECTS. NO PART OF THIS DRAWING OR INFORMATION CONTAINED HEREIN IS TO BE REPRODUCED OR TRANSMITTED IN ANY FORM OR BY ANY MEANS, ELECTRONIC OR MECHANICAL, INCLUDING PHOTOCOPYING, RECORDING, OR BY ANY INFORMATION STORAGE AND RETRIEVAL SYSTEM, WITHOUT THE WRITTEN PERMISSION OF RHA ARCHITECTS.

CONSULTANTS

5/08/09  
PHOTO  
Sams CLUB  
ANDERSON, SOUTH CAROLINA  
CLUB NO. 6463  
JOB NUMBER: 181909

ISSUE BLOCK

NO.	DESCRIPTION	DATE

CHECKED BY: Checker  
DRAWN BY: Author  
FILE NAME: 192-FSA1  
PHOTO CYCLE: XXXX/2019  
DOCUMENT DATE: XXXX/19

**NOT FOR CONSTRUCTION**

CANOPY

SHEET: FSA1