



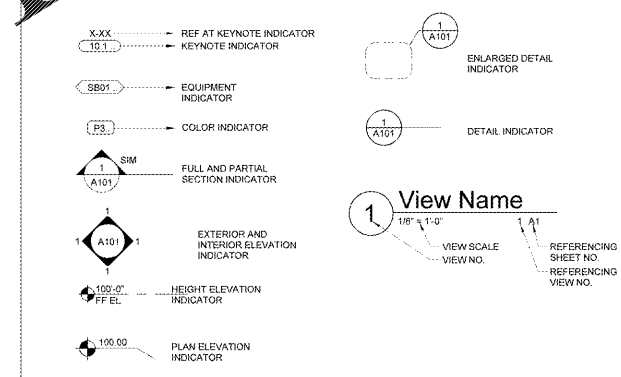
ANDERSON, SOUTH CAROLINA
STORE NO.: 6463

DATE: 08/09/19
PROTO: 136 FUEL

DRAWING INDEX

GENERAL	ELECTRICAL
FSCS COVER SHEET	FSE1 SITE ELECTRICAL PLANS
	FSE2 TANK ELECTRICAL PLANS AND ELECTRICAL DETAILS
	FSE3 SERVICE BUILDING ONE-LINE AND SCHEDULES
	FSE4 SITE CONDUIT DIAGRAMS
	FSE5 SITE MONITORING WIRING DIAGRAM
	FSE6 DISPENSER AND SITE ETHERNET WIRING DIAGRAM
STRUCTURAL	SPECIAL ELEMENTS
FSS0 GENERAL STRUCTURAL INFORMATION	FSOS1 OWNER SUPPLIED
FSS1 FOUNDATION PLANS AND DETAILS	
MECHANICAL	
FST1 PIPING PLAN AND DETAILS	
FST2 TANK DETAILS	
FST3 TANK SUMP DETAILS	
FST4 DISPENSER AND SUMP DETAILS	
FST5 TANK AND VENT PIPING DETAILS	
FST6 EQUIPMENT SCHEDULES	
FSM1 SERVICE BUILDING MECHANICAL PLAN AND DETAILS	
FSP1 SERVICE BUILDING PLUMBING PLAN AND DETAILS	

SYMBOLS LEGEND



PROJECT DATA & CODE INFORMATION

CODES
 2015 INTERNATIONAL BUILDING CODE
 2015 INTERNATIONAL PLUMBING CODE
 2015 INTERNATIONAL MECHANICAL CODE
 2015 NATIONAL ELECTRICAL CODE
 2015 INTERNATIONAL FIRE CODE
 2009 INTERNATIONAL ENERGY CONSERVATION CODE
 HANDICAP ACCESSIBILITY GUIDELINES:
 2010 ICC ANS1 117.1

FIRE PROTECTION:
 NOT REQUIRED

TYPE OF CONSTRUCTION:
 CANOPY: TYPE 2B
 SERVICE BUILDING: TYPE 2B
 (WALLS AND PERMANENT PARTITIONS SHALL BE OF NON-COMBUSTIBLE MATERIALS)

LOCAL CONTACTS

BUILDING OFFICIAL:
 ANDERSON PLANNING & DEVELOPMENT
 ATTN: CANDY DIGGINS, BLDG & CODES
 CITY: ANDERSON
 901 S. MAIN STREET
 ANDERSON, SC 29624
 (864) 231-2217

FIRE DEPARTMENT:
 ANDERSON FIRE DEPARTMENT
 ATTN: ADAM ZENI
 CITY: ANDERSON
 81 SOUTH McDUFFIE STREET
 ANDERSON, SC 29624
 (864) 231-2258 phone

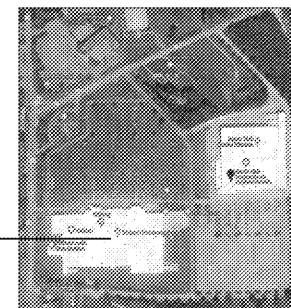
PLANNING & ZONING:
 ANDERSON PLANNING & DEVELOPMENT
 CITY: ANDERSON
 901 S. MAIN STREET
 ANDERSON, SC 29624
 (864) 231-2222 phone

WATER AND SEWER:
 ANDERSON ELECTRIC CITY UTILITIES
 ATTN: WATER WASTEWATER
 CITY: ANDERSON
 601 S. MAIN STREET
 ANDERSON, SC 29624
 (864) 250-6347 phone

SITE ADDRESS

SAM'S CLUB #5463
 3812 LIBERTY HWY, SUITE #6
 ANDERSON, TX 29621

VICINITY MAP



GENERAL INFORMATION

FIRE EXTINGUISHERS SHALL BE PROVIDED BY GENERAL CONTRACTOR IN ACCORDANCE WITH NFPA 10 (112A). FIRE EXTINGUISHERS SHALL BE PROVIDED FOR EACH 3,000 S.F. OF AREA, LOCATED SUCH THAT TRAVEL DISTANCE TO CLOSEST UNIT IS NO MORE THAN 75 FEET. FIRE EXTINGUISHER LOCATIONS SHALL BE APPROVED BY THE OFFICE OF THE FIRE MARSHAL PRIOR TO OCCUPANCY.

ABBREVIATIONS LEGEND

ABBR	DEFINITION	ABBR	DEFINITION
AB	ANCHOR BOLT	LV	LONGITUDINAL
ACI	AMERICAN CONCRETE INSTITUTE	LONG	LONGITUDINAL
AFF	ABOVE FINISHED FLOOR	MAS	MASONRY
AHU	AIR HANDLING UNIT	MAX	MAXIMUM
AISC	AMERICAN INSTITUTE OF STEEL CONSTRUCTION	MDF	MEDIUM DENSITY FIBERBOARD
ARCH	ARCHITECTURAL	MCH	MECHANICAL
ASTM	AMERICAN SOCIETY OF TESTING AND MATERIALS	MFR	MANUFACTURER
AWS	AMERICAN WELDING SOCIETY	MISG	MISCELLANEOUS
B	BEARD	MN	MINIMUM
BL	BELOW FINISHED FLOOR	MO	MASONRY OPENING
BLDG	BUILDING	MTL	METAL
BO	BOTTOM OF	NC	NOT IN CONTRACT
SOS	BOTTOM OF STEEL OR BOTTOM OF STUD	NRP	NON FIBERGLASS REINFORCED PLASTIC
BTM	BOTTOM	NO	NUMBER
BRG	BEARING	NS	NEAR SIDE
CD	CASH DRAWER	NTS	NOT TO SCALE
CJ	CONTROL JOINT	OC	ON CENTER
CL	CENTERLINE	OCH	ON CENTER HORIZONTALLY
CLR	CLEAR	OCV	ON CENTER VERTICALLY
CMU	CONCRETE MASONRY UNIT	OD	OUTSIDE DIAMETER
COL	COLUMN	OH	OPPOSITE HAND
CONG	CONCRETE	PAF	POWDER ACTUATED FASTENER
CONST	CONSTRUCTION	P/C	POUNDS PER CUBIC FOOT
CONT	CONTINUOUS	PLAM	PLASTIC LAMINATE
DA	DIAMETER	PL	PLATE
DS	DOWNSPOUT	PLF	POUNDS PER LINEAR FOOT
EAS	EMERGENCY ACCESS SYSTEM	PMEJ	PREMOUND EXPANSION JOINT
EDC	ELECTRICAL DISTRIBUTION CENTER	PT	PRESSURE TREATED
EFS	EXTERIOR INSULATION AND FINISH SYSTEM	PSF	POUNDS PER SQUARE FOOT
EJ	EXPANSION JOINT	PS	PROTECTIVE SURFACING
EL	ELEVATION	PSI	POUNDS PER SQUARE INCH
ELEC	ELECTRICAL	PVC	POLYVINYL CHLORIDE
EQU	EQUIPMENT	QTY	QUANTITY
ES	EQUIPMENT SUPPLIER	REF	REFER TO
EWH	EACH WAY	REIN	REINFORCING
FDN	FOUNDATION	REVD	REVISION
FF	FINISHED FLOOR	REV	REVERSE
FS	FAR SIDE	RI	REACH-IN
FTG	FOOTING	RO	ROOF OPENING
FV	FIELD VERIFY	RTU	ROOF TOP UNIT
GAUSE	GAUGE	SCHED	SCHEDULE
GC	GENERAL CONTRACTOR	SI	STEEL JOIST INSTITUTE
GM	GENERAL MERCHANDISE	SM	SIMILAR
GR	GROGGERY	SJ	STEEL JOIST INSTITUTE
GYP BD	GYPSPUM BOARD	SP	SPACERS
H	HEIGHT	SPECS	SPECIFICATIONS
HMR	HOME MEAL REPLACEMENT	SS	STAINLESS STEEL
HORIZ	HORIZONTAL	STRUC	STRUCTURAL
HSA	HEADED STUD ANCHOR	T&B	TOP AND BOTTOM
HSS	HOLLOW STRUCTURAL SECTION	THK	THICKNESS
INFO	INTEGRAL COLORED CONCRETE	TOP	TOP OF
ISO	ISOLATION	TOC/TC	TOP OF CONCRETE
JBE	JOIST BEARING ELEVATION	TOP	TOP OF FOOTING
JST	JOIST	TOGB	TOP OF GRADE BEAM
JT	JOINT	TM	TOP OF MASONRY
KSI	KIPS PER SQUARE INCH	TOP/F	TOP OF PAVING OR TOP OF PANEL
L	LENGTH	TOS	TOP OF STEEL OR TOP OF STUD
LB	POUNDS	TRNS	TRANSVERSE
L/H	LONGER HORIZONTAL	UNO	UNLESS NOTED OTHERWISE
		VERT	VERTICAL
		VTR	VENT THROUGH ROOF
		W	WIDTH
		WD	WOOD

FUEL ARCHITECT	FUEL STRUCTURAL ENGINEER	FUEL MECHANICAL ENGINEER	FUEL ELECTRICAL ENGINEER
RHA ARCHITECTS 211 N. RECORD STREET, SUITE 222 DALLAS, TX 75202 PHONE: (214) 749-0626	ELLISON GAGE & ASSOCIATES, PLLC 8564 K. ELLISON, P.E. 3669 W. PLANO PARKWAY, SUITE 200 PLANO, TX 75093 PHONE: (972) 354-8895	DAVID P. KIMBALL, P.E. 1805 N. 2ND STREET, SUITE 5235 ROGERS, AR 72759 PHONE: (479) 636-5004	RANDALL C. HAASE, P.E. 1805 N. 2ND STREET, SUITE 5539 ROGERS, AR 72759 PHONE: (479) 636-5004

SAM'S CLUB
 FUEL STATION
 SAM'S CLUB
 FUEL STATION
 SAM'S CLUB
 FUEL STATION
 SAM'S CLUB
 FUEL STATION



RHA Architects
211 N. Record Street, Suite 222
Dallas, Texas 75202
T: (214) 749-0626

STIPULATION FOR REUSE:
 THE DRAWING AND ALL INFORMATION HEREON ARE THE PROPERTY OF RHA ARCHITECTS AND ARE NOT TO BE REPRODUCED OR TRANSMITTED IN ANY FORM OR BY ANY MEANS, ELECTRONIC OR MECHANICAL, INCLUDING PHOTOCOPYING, RECORDING, OR BY ANY INFORMATION STORAGE AND RETRIEVAL SYSTEM, WITHOUT THE WRITTEN PERMISSION OF RHA ARCHITECTS.

CONSULTANTS:
 RHA ARCHITECTS
 ANDERSON, SOUTH CAROLINA
 CLUB NO.: 6463
 JOB NUMBER: 131609
 PHOTO

ISSUE BLOCK

REV #1	DATE
1	09/26/19

CHECKED BY: PDB
 DRAWN BY: SAB
 FILE NAME: 162-FSCS
 PHOTO CYCLE: 0125/2018
 DOCUMENT DATE: 08/09/19

NOT FOR CONSTRUCTION

SAM'S CLUB
 FUEL STATION
 SAM'S CLUB
 FUEL STATION

COVER SHEET

SHEET: FSCS