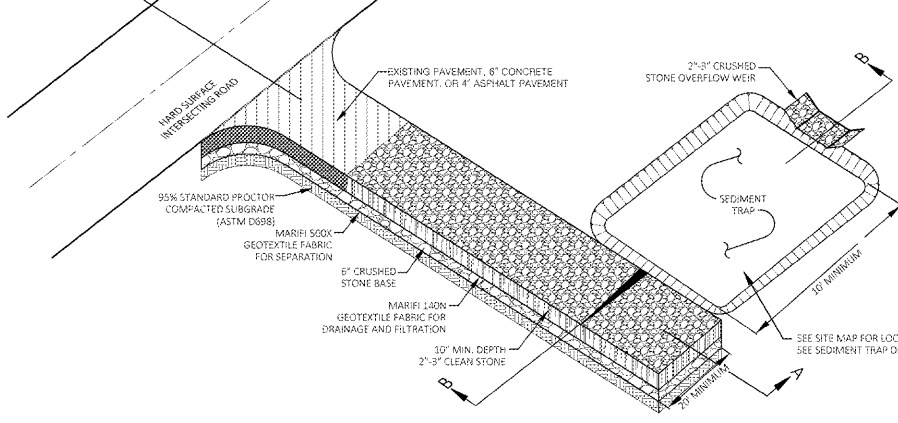
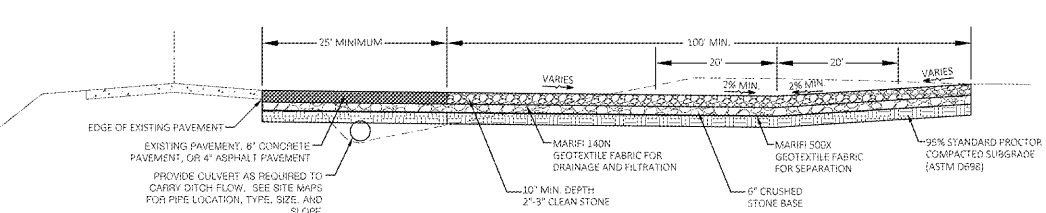


NOTES:

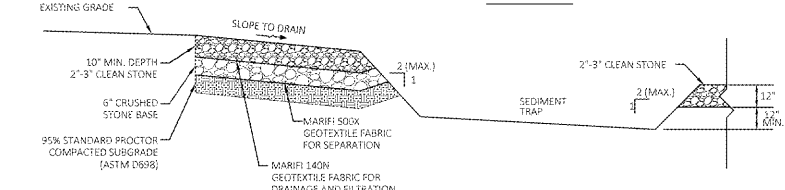
- ALL SITE ACCESS MUST BE CONFINED TO THE CONSTRUCTION EXITS. BARRICADE TO PREVENT USE OF ANY LOCATIONS OTHER THAN THE CONSTRUCTION EXITS WHERE VEHICLES OR EQUIPMENT MAY ACCESS THE SITE.
- CONTRACTOR TO LOCATE TEMPORARY CONSTRUCTION FENCING, JERSEY BARRIERS, OR BOTH ALONG THE SIDES OF THE CONSTRUCTION EXIT TO PREVENT CONSTRUCTION TRAFFIC FROM SHORT CIRCUITING/BYPASSING THE EXIT.
- PROVIDE SEDIMENT TRAP ON DOWN GRADIENT SIDE (OR BOTH SIDES) AS REQUIRED. SEDIMENT TRAP SHALL BE LOCATED OUTSIDE OF THE FRONT-OF-WAY AND AT A MINIMUM SETBACK DISTANCE AS REQUIRED PER LOCAL JURISDICTION.
- IF THE ACTION OF VEHICLES TRAVELING OVER THE GRAVEL CONSTRUCTION EXITS IS NOT SUFFICIENT TO PREVENT TRACKING OF DIRT, DUST OR MUD, THEN TRUCKS MUST BE WASHED BEFORE THE VEHICLES ENTER A PUBLIC ROAD. ALL WASH WATER MUST BE ROUTED TO A SEDIMENT TRAP OR OTHER TREATMENT AREA AND SHALL NOT BE DIRECTLY DISCHARGED OFF-SITE.
- LOCATIONS WHERE VEHICLES ENTER AND EXIT THE SITE MUST BE INSPECTED FOR EVIDENCE OF SEDIMENT TRACKING BEYOND THE PERMITTED PROJECT AREA. ALL MATERIALS SPILLED, DROPPED, WASHED OR TRACKED FROM VEHICLES ONTO ROADWAYS OR INTO STORM DRAINS MUST BE REMOVED IMMEDIATELY.
- ANY SEDIMENT DEPOSITED ON THE ROADWAY SHALL BE SWEEP AS NECESSARY (AND WITHIN THE SAME DAY AS DISCOVERY) AND DISPOSED OF IN AN APPROPRIATE MANNER. SEDIMENT SHALL NOT BE WASHED INTO STORM SEWER SYSTEMS.



PLAN VIEW



SECTION A-A

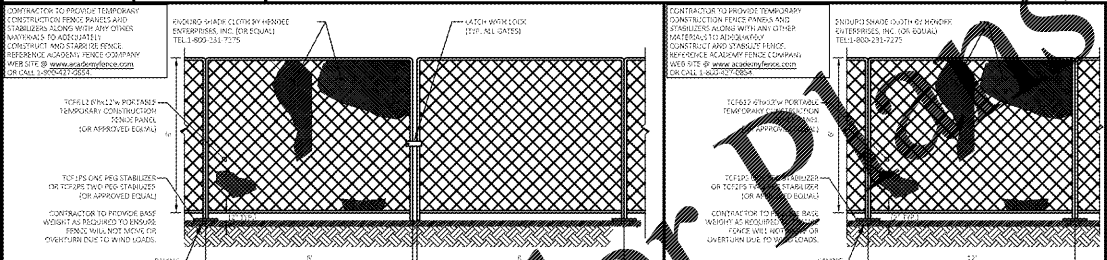


SECTION B-B

NOTE TO GC: THE GOAL OF A CONSTRUCTION EXIT AND ASSOCIATED WHEEL WASH IS TO ELIMINATE TRACK OUT. SIMPLY MANAGING TRACK OUT THROUGH DESIGNATED OR CONTINGENT SWEEPING IS NOT AN ACCEPTABLE PRACTICE. WHILE STREET SWEEPING IS AN ACCEPTABLE PRACTICE, THE REMOVAL OF DUST AND MINIMAL AMOUNTS OF FINE SEDIMENT, OBSERVABLE TRACK OUT ON THE EXITS, SHOULD TRIGGER THE USE OF ADDITIONAL MEASURES (WHEEL WASH, CONSERVATIVE USE OF ALTERNATE DISCONTINUING VEHICLE TRAFFIC UNTIL CONDITIONS ON-SITE HAVE IMPROVED TRACK OUT, A SEDIMENT RELEASE, ALL SEDIMENT RELEASES MUST BE REPORTED TO THE SWPPP INFORMATION SIGN.

LAST REVISED: JUNE 2012
WAL-MART STANDARD DETAIL

CONSTRUCTION EXIT WITH SEDIMENT TRAP
N.T.S.



TEMPORARY DOUBLE GATE

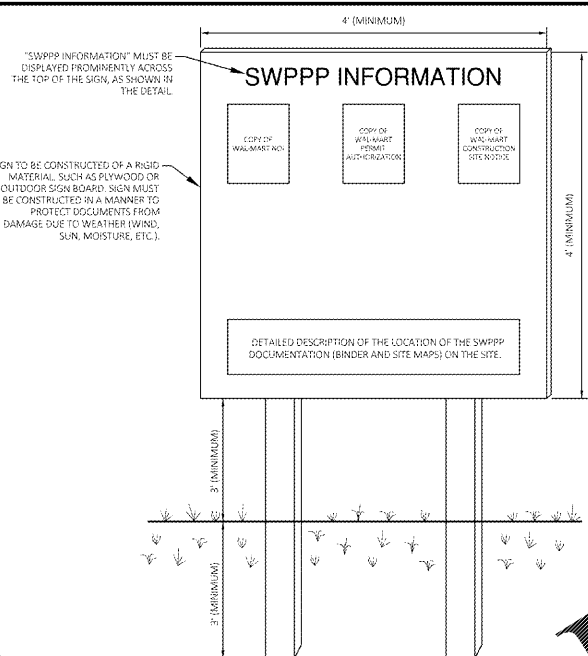
TEMPORARY FENCE

MODIFIED WALMART DETAIL

MODIFIED WALMART DETAIL

JOB # 31076 DRAWING: 31076-SWPPP.dwg LAST SAVED BY: DYVING

Order Plans

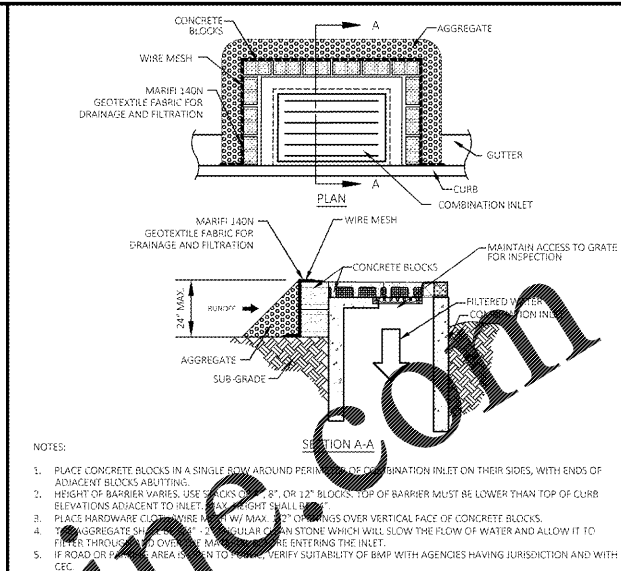


NOTES:

- THE SWPPP INFORMATION SIGN MUST BE LOCATED IN A PROMINENT, PUBLICLY ACCESSIBLE LOCATION NEAR THE MAIN ENTRANCE OF THE SITE, SUCH THAT THE DOCUMENTATION CAN BE READ WITHOUT ACCESSING THE JOBSITE, BUT NOT OBSTRUCTING VIEWS OF THE SITE.
- ALL POSTED DOCUMENTS MUST BE MAINTAINED IN A CLEARLY READABLE POSITION AT ALL TIMES THROUGHOUT CONSTRUCTION UNTIL THE NOTICE OF TERMINATION (NOT) IS FILED FOR THE PERMIT.
- ALL PAGES OF NOTICES OF INTENT AND PERMIT AUTHORIZATIONS MUST BE POSTED. THE CONTRACTOR MAY MAKE ACCESSIBLE WATERPROOF FOLDERS TO STORE THESE DOCUMENTS IF IT WILL BE DIFFICULT TO POST ALL PAGES INDIVIDUALLY.
- CONTRACTOR SHALL POST OTHER STORMWATER AND/OR EROSION AND SEDIMENT CONTROL RELATED PERMITS ON THE SIGN AS REQUIRED BY THE GOVERNING AGENCIES.
- SUBSEQUENT PERMIT MODIFICATION REQUESTS OR RENEWAL APPLICATIONS AND THE ASSOCIATED AUTHORITY RESPONSES SHALL BE POSTED ON THE SWPPP SIGN.
- THE SIGN SHALL BE LOCATED OUTSIDE OF PUBLIC RIGHT-OF-WAY AND ASSESSMENTS UNLESS APPROVED BY THE GOVERNING AGENCY.
- CONTRACTOR IS RESPONSIBLE FOR ENSURING STABILITY OF THE SWPPP INFORMATION SIGN.

LAST REVISED: JUNE 2012
WAL-MART STANDARD DETAIL

LAST REVISED: APRIL 30, 2011
WAL-MART STANDARD DETAIL



NOTES:

- PLACE CONCRETE BLOCKS IN A SINGLE ROW AROUND PERIMETER OF COMBINATION INLET ON THEIR SIDES, WITH ENDS OF ADJACENT BLOCKS ABUTTING.
- HEIGHT OF BARRIER VARIES, USE 8\"/>

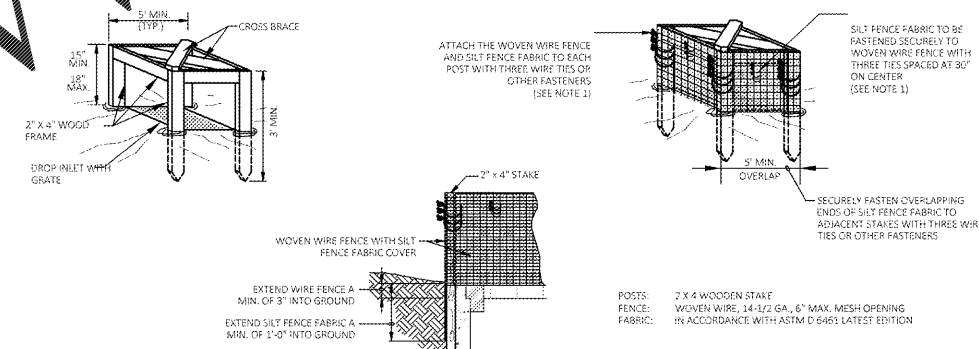
MAINTENANCE NOTES:

- INLET PROTECTION DEVICES MUST BE INSPECTED FOR SEDIMENT ACCUMULATION WITHIN THE CATCH BASIN (IF USING INSERT TYPE DEVICES) OR UPGRADIENT OF THE INLET.
- REMOVAL OF SEDIMENT ACCUMULATED IN OR ADJACENT TO A STORM DRAIN INLET MUST BEGIN IMMEDIATELY UPON DISCOVERY, WITH COMPLETION OF THE ACTIVITY OCCURRING NO LATER THAN THE END OF THE FOLLOWING BUSINESS DAY.
- INLET PROTECTION DEVICES SHALL BE INSPECTED FOR UNINTENDED BYPASS OR IMPROPER FLOW-RATES THAT MAY CAUSE DOWNSTREAM FLOODING.
- CONTACT THE CEC FOR ALTERNATE INLET PROTECTION IF THE DESIGNED PROTECTION MAY IMPACT DOWNSTREAM Bmps, ADJACENT SLOPES, ETC., DUE TO PONDING ISSUES. ENSURE THAT NO UNDERMINING OF INLET PROTECTION DEVICES HAS OCCURRED.
- INLET PROTECTION DEVICES AND BARRIERS SHALL BE REPAIRED OR REPLACED IF THEY SHOW SIGNS OF UNDERMINING OR DETERIORATION.

IP7 BLOCK AND AGGREGATE COMBINATION INLET PROTECTION N.T.S.

LAST REVISED: OCTOBER 2012
WAL-MART STANDARD DETAIL

LAST REVISED: JUNE 2012
WAL-MART STANDARD DETAIL



NOTES:

- ATTACH THE WOVEN WIRE FENCE AND THE GEOTEXTILE TO EACH POST (SPACED EVERY 30\"/>

MAINTENANCE NOTES:

- INLET PROTECTION DEVICES MUST BE INSPECTED FOR SEDIMENT ACCUMULATION WITHIN THE CATCH BASIN (IF USING INSERT-TYPE DEVICE) OR UPGRADIENT OF THE INLET.
- REMOVAL OF SEDIMENT ACCUMULATED IN OR ADJACENT TO A STORM DRAIN INLET MUST BEGIN IMMEDIATELY UPON DISCOVERY, WITH COMPLETION OF THE ACTIVITY OCCURRING NO LATER THAN THE END OF THE FOLLOWING BUSINESS DAY.
- INLET PROTECTION DEVICES SHALL BE INSPECTED FOR UNINTENDED BYPASS OR IMPROPER FLOW-RATES THAT MAY CAUSE DOWNSTREAM FLOODING.
- CONTACT THE CEC FOR ALTERNATE INLET PROTECTION IF THE DESIGNED PROTECTION MAY IMPACT DOWNSTREAM Bmps, ADJACENT SLOPES, ETC., DUE TO PONDING ISSUES. ENSURE THAT NO UNDERMINING OF INLET PROTECTION DEVICES HAS OCCURRED.
- INLET PROTECTION DEVICES AND BARRIERS SHALL BE REPAIRED OR REPLACED IF THEY SHOW SIGNS OF UNDERMINING OR DETERIORATION.

IP4 SILT FENCE INLET PROTECTION N.T.S.

LAST REVISED: APRIL 30, 2011
WAL-MART STANDARD DETAIL

DEVELOPER/OWNER:
WALMART INC.
702 SW 8TH STREET, MAIL STOP 0505
BENTONVILLE, AR 72716-0505
479-204-3314

SITE OPERATOR/GENERAL CONTRACTOR:
SUPERINTENDENT:

IMPORTANT: GC MUST SIGN ALL PLAN SHEETS AND ANY NEW PLAN SHEETS ISSUED BY THE CEC.

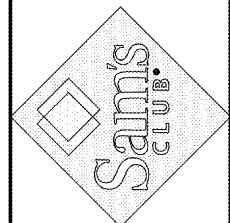
SWPPP DETAIL SHEET 1

NO.	DATE	DESCRIPTION

Engineering Associates, Inc.
ENGINEERS • PLANNERS • SURVEYORS
LANDSCAPE ARCHITECTS • ENVIRONMENTAL SCIENTISTS

7545 N. Ingram Ave., Suite 107
Fresno, CA 93711
(559)442-3119
FAX: (559)442-3129

SAMS CLUB FUEL STATION #6463-502
SWPPP DETAIL SHEET 1
3012 LIBERTY HWY #8
ANDERSON SOUTH CAROLINA



INITIAL DESIGN	11/7/19
DATE	
JOS	JPD
DPOR	PM
JAP	DES
DV	DRW

JOS NO.: 31076	SHEET NO.
DWG NAME: 31076-SWPPP	SW7
DATE: 11/7/19	
12:19 PM	
REV-0	