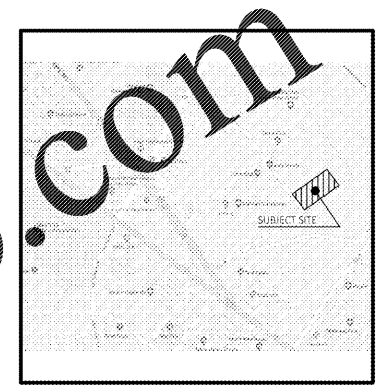


SWPPP PLANS FOR CONSTRUCTION OF FUEL STATION #6463-502

3812 LIBERTY HWY #6

CITY OF ANDERSON COUNTY OF ANDERSON, SOUTH CAROLINA



Vicinity Map
Not to Scale

PLAN INDEX:

SW0	SWPPP NOTES
SW1	SWPPP IMPLEMENTATION AND LIMITS OF WORK
SW2	PHASE 1 EROSION AND SEDIMENT CONTROL PLAN
SW3	PHASE 1 DRAINAGE MAP
SW4	PHASE 2 EROSION AND SEDIMENT CONTROL PLAN
SW5	PHASE 2 DRAINAGE MAP
SW6	SWPPP INFORMATION SUMMARIES
SW7	SWPPP DETAIL SHEET 1
SW8	SWPPP DETAIL SHEET 2
SW9	SWPPP DETAIL SHEET 3
SW10	SWPPP DETAIL SHEET 4

NATIONAL POLLUTANT DISCHARGE ELIMINATION SYSTEMS (NPDES) NOTES

- IN THE CASE OF EMERGENCY, CALL JOHN DEGUINYA - CEI ENGINEERING AT WORK PHONE# (559) 447-3139 OR HOME PHONE# (559) 840-7614.
- SEDIMENT FROM AREAS DISTURBED BY CONSTRUCTION SHALL BE RETAINED ON SITE USING STRUCTURAL CONTROLS TO THE MAXIMUM EXTENT PRACTICABLE.
- STOCKPILES OF SOIL SHALL BE PROPERLY CONTAINED TO MINIMIZE SEDIMENT TRANSPORT FROM THE SITE TO STREETS, DRAINAGE FACILITIES OR ADJACENT PROPERTIES VIA RUNOFFS, VEHICLE TRACKING, OR WIND.
- APPROPRIATE BMP'S FOR CONSTRUCTION-RELATED MATERIALS, WASTES, SPILLS SHALL BE IMPLEMENTED TO MINIMIZE TRANSPORT FROM THE SITE TO STREETS, DRAINAGE FACILITIES, OR ADJACENT PROPERTIES BY WIND OR RUNOFF.
- RUNOFF FROM EQUIPMENT AND VEHICLE WASHING SHALL BE CONTAINED AT CONSTRUCTION SITES UNLESS TREATED TO REDUCE OR REMOVE SEDIMENT AND OTHER POLLUTANTS.
- ALL CONSTRUCTION CONTRACTOR AND SUBCONTRACTOR PERSONNEL ARE TO BE MADE AWARE OF THE REQUIRED BEST MANAGEMENT PRACTICES AND GOOD HOUSEKEEPING MEASURES FOR THE PROJECT SITE AND ANY ASSOCIATED CONSTRUCTION STAGING AREAS.
- AT THE END OF EACH DAY OF CONSTRUCTION ACTIVITY ALL CONSTRUCTION DEBRIS AND WASTE MATERIALS SHALL BE COLLECTED AND PROPERLY DISPOSED IN THE TRASH OR RECYCLE BINS.
- CONSTRUCTION SITES SHALL BE MAINTAINED IN SUCH A MANNER THAT AN ANTICIPATED STORM DOES NOT CARRY WASTES OR POLLUTANTS OFF THE SITE. DISCHARGES OF MATERIAL OTHER THAN STORM WATER ONLY WHEN NECESSARY FOR PERFORMANCE AND COMPLETION OF CONSTRUCTION PRACTICES AND WHERE THEY DO NOT CAUSE OR CONTRIBUTE TO A VIOLATION OF ANY WATER QUALITY STANDARD, CAUSE OR THREATEN TO CAUSE POLLUTION, CONTAMINATION, OR NUISANCE, OR CONTAIN A HAZARDOUS SUBSTANCE IN A QUANTITY REPORTABLE UNDER FEDERAL REGULATIONS 40 CFR PARTS 117 AND 302.
- POTENTIAL POLLUTANTS INCLUDE BUT ARE NOT LIMITED TO: SOLID OR LIQUID CHEMICAL SPILLS; WASTES FROM PAINTS, STAINS, SEALANTS, GLUES, LINES, PESTICIDES, HERBICIDES, WOOD PRESERVATIVES AND SOLVENTS; ASBESTOS FIBERS, PAINT FLAKES OR FLAKES, FUELS, OILS, LUBRICANTS, AND HYDRAULIC FLUIDS; BATTERY FLUIDS; FERTILIZERS; VEHICLE/EQUIPMENT WASH AND CONCRETE WASH WATER; CONCRETE, DETERGENT OR FLOATABLE WASTES; WASTES FROM ANY ENGINE/EQUIPMENT STREAM CLEANING OR CHEMICAL DEGREASING AND SUPER CHLORINATED POTABLE WATER LINE FLUSHING. DURING CONSTRUCTION, PERMITTEE SHALL DISPOSE OF SUCH MATERIALS IN A SPECIFIED AND CONTROLLED TEMPORARY AREA ON-SITE, PHYSICALLY SEPARATED FROM POTENTIAL STORM WATER RUNOFF, WITH ULTIMATE DISPOSAL IN ACCORDANCE WITH LOCAL, STATE AND FEDERAL REQUIREMENTS.
- DEWATERING OF CONTAMINATED GROUNDWATER, OR DISCHARGE CONTAMINATED SOILS VIA SURFACE EROSION IS PROHIBITED. DEWATERING OF NON-CONTAMINATED GROUNDWATER REQUIRES A NATIONAL POLLUTANT DISCHARGE ELIMINATION SYSTEM PERMIT FROM THE RESPECTIVE STATE REGIONAL WATER QUALITY CONTROL BOARD.
- GRADED AREAS ON THE PERMITTED AREA PERIMETER MUST DRAIN AWAY FROM THE FACE OF SLOPES AT THE CONCLUSION OF EACH WORKING DAY. DRAINAGE IS TO BE DIRECTED TOWARD DESLTING FACILITIES.
- THE PERMITTEE AND CONTRACTOR SHALL BE RESPONSIBLE AND SHALL TAKE NECESSARY PRECAUTIONS TO PREVENT PUBLIC TRESPASS ONTO AREAS WHERE IMPONDED WATER CREATES A HAZARDOUS CONDITION.
- THE PERMITTEE AND CONTRACTOR SHALL INSPECT THE EROSION CONTROL WORK AND INSURE THAT THE WORK IS IN ACCORDANCE WITH THE APPROVED PLANS.
- THE PERMITTEE SHALL NOTIFY ALL GENERAL CONTRACTORS, SUBCONTRACTORS, MATERIAL SUPPLIERS, LESSEES, AND PROPERTY OWNERS THAT DUMPING OF CHEMICALS INTO THE STORM DRAIN SYSTEM OR THE WATERSHED IS PROHIBITED.
- EQUIPMENT AND WORKERS FOR EMERGENCY WORK SHALL BE MADE AVAILABLE AT ALL TIMES DURING THE RAINY SEASON. NECESSARY MATERIALS SHALL BE AVAILABLE ON SITE AND STOCKPILED AT CONVENIENT LOCATIONS TO FACILITATE RAPID CONSTRUCTION OF TEMPORARY DEVICES WHEN RAIN IS IMMINENT.
- ALL REMOVABLE EROSION PROTECTIVE DEVICES SHALL BE IN PLACE AT THE END OF EACH WORKING DAY WHEN THE FIVE DAY RAIN PROBABILITY FORECAST EXCEEDS 40%.
- SEDIMENTS FROM AREAS DISTURBED BY CONSTRUCTION SHALL BE RETAINED ON SITE USING AN EFFECTIVE COMBINATION OF EROSION AND SEDIMENT CONTROLS TO THE MAXIMUM EXTENT PRACTICABLE. ALL STOCKPILES OF SOIL SHALL BE PROPERLY CONTAINED TO MINIMIZE SEDIMENT TRANSPORT FROM THE SITE TO STREETS, DRAINAGE FACILITIES OR ADJACENT PROPERTIES VIA RUNOFFS, VEHICLE TRACKING, OR WIND.
- APPROPRIATE BMP'S FOR CONSTRUCTION-RELATED MATERIALS, WASTES, SPILLS OR POLLUTANTS SHALL BE IMPLEMENTED AND RETAINED ON SITE TO MINIMIZE TRANSPORT FROM SITE TO STREETS, DRAINAGE FACILITIES, OR ADJACENT PROPERTY BY WIND RUNOFF.

GENERAL NOTES

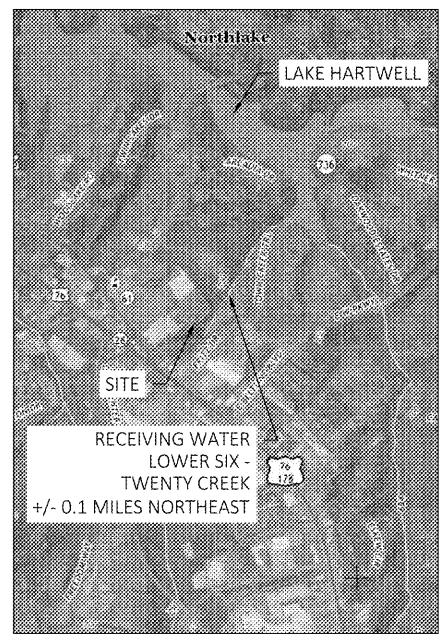
- PROJECT OFFICE SHALL SWPPP POSTINGS. THE FOLLOWING ITEMS MUST BE POSTED TOGETHER IN A SINGLE, ORGANIZED LOCATION ON A WALL INSIDE THE PROJECT OFFICE:
 - SWPPP SITE MAPS (ALL PHASES);
 - SWPPP DETAIL SHEETS;
 - MAP SHOWING LOCATION OF OFFSITE IMPORT OR EXPORT FACILITY;
 - REVISIONS TO DETAILS, SITE MAPS, OR SWPPP-RELATED REFS;
 - SITE SWPPP BINDER;
 - SWPPP PLACARDS;
 - CURRENT OWNER TRAINING CERTIFICATES FOR SUPERINTENDENTS) AND COMPLIANCE OFFICERS; AND
 - CERTIFICATIONS AND/OR TRAINING CERTIFICATES REQUIRED TO PERFORM INSPECTIONS BY THE APPLICABLE CONSTRUCTION GENERAL PERMIT OF AUTHORITY HAVING JURISDICTION.
- PERMITTED PROJECT AREA: FOR PURPOSES OF THIS SWPPP AND ASSOCIATED STORMWATER PERMIT, "PERMITTED PROJECT AREA" IS DEFINED AS ANY AND ALL AREAS WITHIN THE PROJECT LIMITS OF DISTURBANCE, AS SHOWN ON THE SWPPP SITE MAPS AND IDENTIFIED IN THE NOTICE OF INTENT TO THE AGENCY. ALL GROUND-DISTURBING AND CONSTRUCTION-RELATED ACTIVITIES (MATERIAL STORAGE, DUMPSTERS, PARKING AREAS, PROJECT OFFICE TRAILER, ETC.) MUST BE INCLUDED WITHIN THE PERMITTED PROJECT AREA LIMITS OF DISTURBANCE. OFFSITE AREAS THAT EXTEND BEYOND THE SAME'S CLUB BOUNDARY AREA, BUT MUST BE INCLUDED WITHIN THE PERMITTED AREA INCLUDE THE FOLLOWING:
 - NO OFFSITE WORK ASSOCIATED WITH THIS PROJECT.
- ALL AREAS OUTSIDE THE PERMITTED PROJECT AREA (I.E., LIMITS OF DISTURBANCE) ACQUIRED FOR USE BY THE GC OR A SUBCONTRACTOR OF THE GC (BORROW SOURCES, DISPOSAL AREAS, ETC.) MUST BE MANAGED IN ACCORDANCE WITH APPENDIX E - TAB 21 OF THE 02370 SPECIFICATION. THE CONTRACTOR IS REQUIRED TO LOCATE OFFICE TRAILERS AND MATERIAL STORAGE AREAS FOR THE PROJECT WITHIN THE LIMITS OF DISTURBANCE. THE CONTRACTOR MAY REQUEST USE OF OFF-SITE LOCATIONS FOR OFFICE TRAILERS OR NON-ERODIBLE MATERIAL STORAGE, HOWEVER, APPROVAL MUST BE OBTAINED FROM THE CONSTRUCTION MANAGER, THE CEC AND THE OWNER PRIOR TO THEIR USE. REQUESTS WILL BE REVIEWED ON A CASE BY CASE BASIS AND IF APPROVED, LIMITATIONS ON USE WILL BE PROVIDED BY THE CEC.
- SPECIAL PROJECT AREAS: THERE ARE NO SPECIAL PROJECTS, LOCATED BEYOND THE OWNER PERMITTED PROJECT AREA, REQUIRING INSPECTION AND MAINTENANCE ASSOCIATED WITH THIS CONSTRUCTION PROJECT.
- NON-STORMWATER DISCHARGES: THE GENERAL PERMIT FOR STORMWATER DISCHARGES ASSOCIATED WITH CONSTRUCTION OF THIS PROJECT PROHIBITS MOST NON-STORMWATER DISCHARGES DURING THE CONSTRUCTION PHASE. ALLOWED NON-STORMWATER DISCHARGES THAT OCCUR DURING CONSTRUCTION ON THIS PROJECT, ARE LIMITED TO THE FOLLOWING:
 - DISCHARGES FROM THE OPERATION OF PORTABLE TOILETS.
 - DISCHARGES FROM THE OPERATION OF PORTABLE WASHING AND CONCRETE CUTTING EFFLUENT, AMONG OTHERS, MUST BE COLLECTED FOR TREATMENT AND DISPOSAL. IT MUST NOT BE FLUSHED INTO THE SITE STORM DRAIN SYSTEM OR DISCHARGED OFF-SITE.
- EROSION CONTROL POINTS: CHANGE POINTS MUST BE INSPECTED TO DETERMINE WHETHER EROSION AND SEDIMENTATION CONTROL MEASURES ARE EFFECTIVE IN PREVENTING DISCHARGE OF SEDIMENT FROM THE SITE AND/OR LOCATIONS TO RECEIVING WATERS. SEDIMENT ACCUMULATION DOWNGRADIENT OF DISCHARGE LOCATIONS SHALL BE REPORTED AS A SEDIMENT DISCHARGE (SEE APPENDIX E - TAB 14, SEDIMENT RELEASES, OF THE 02370 SPECIFICATION) AND THE POTENTIAL UPSTREAM CAUSE SHALL BE INVESTIGATED TO PREVENT FUTURE OCCURRENCE. CONTACT THE CEC AND SWPPP TO DETERMINE APPROPRIATE ACTION FOR CLEANUP OF DISCHARGED SEDIMENT THAT MAY BE OUTSIDE OF THE LIMITS OF DISTURBANCE. SEE SAMPLING AND MONITORING OF EFFLUENT PLAN IF APPLICABLE.

EROSION AND SEDIMENT CONTROL NOTES

- CONTRACTOR SHALL IMPLEMENT BEST MANAGEMENT PRACTICES AS REQUIRED BY THIS STORM WATER POLLUTION PREVENTION PLAN. ADDITIONAL BEST MANAGEMENT PRACTICES SHALL BE IMPLEMENTED AS DICTATED BY CONDITIONS AT NO ADDITIONAL COST TO OWNER THROUGHOUT ALL PHASES OF CONSTRUCTION.
- BEST MANAGEMENT PRACTICES (BMP'S) AND CONTROLS SHALL CONFORM TO FEDERAL, STATE AND LOCAL REQUIREMENTS OR MANUAL OF PRACTICE, AS APPLICABLE. CONTRACTOR SHALL IMPLEMENT ALL APPLICABLE CONTROLS AS DIRECTED BY PERMITTING AGENCY OR OWNER.
- SITE MAP MUST CLEARLY DELINEATE ALL STATE WATERS. PERMITS FOR ANY CONSTRUCTION ACTIVITY IMPACTING STATE WATERS OR REGULATED WETLANDS MUST BE MAINTAINED ON SITE AT ALL TIMES.
- CONTRACTOR TO LIMIT DISTURBANCE OF SITE IN STRICT COMPLIANCE WITH SWPPP IMPLEMENTATION SEQUENCE, OR AS REQUIRED BY THE APPLICABLE GENERAL PERMIT OR UNLESS NECESSARY OR IMPROPERLY SEQUENCED CLEARING AND/OR GRADING SHALL BE PERMITTED.
- ALL DENUDE/BARE AREAS THAT WILL BE EXPOSED FOR 15 DAYS OR MORE, MUST BE STABILIZED IMMEDIATELY UPON COMPLETION OF MOST RECENT GRADING ACTIVITY. THIS USE OF STABILIZATION INCLUDES ANNUAL GRASS/GRAIN VARIETIES, STRAW, MULCH, WOOD CELLULOSE FIBERS, TACKLERS, NETTING AND/OR BLANKETS. COMPLETION MUST BE COMPLETED WITHIN SEVEN DAYS.
- DISTURBED PORTIONS OF THE SITE WHERE CONSTRUCTION ACTIVITY HAS PERMANENTLY STOPPED SHALL BE PERMANENTLY STABILIZED AS SHOWN ON THESE AREAS SHALL BE SEED, SCOOED, AND/OR VEGETATED IMMEDIATELY AND COMPLETELY WITHIN SEVEN DAYS AFTER THE LAST CONSTRUCTION ACTIVITY OCCURRING IN THE AREA. GRADING PLAN AND/OR LANDSCAPE PLAN.
- ROCKES SHALL BE LEFT IN A ROCKED CONDITION DURING THE GRADING PHASE TO REDUCE RUNOFF VELOCITIES AND EROSION. TEMPORARY AND/OR PERMANENT STABILIZATION SHALL BE APPLIED PER REQUIREMENTS IN THESE EBS CONTROL NOTES.
- TO PREVENT GRADE CHANGES DURING THE DEVELOPMENT OF THE PROJECT, THE CONTRACTOR SHALL BE RESPONSIBLE FOR ADJUSTING THE EROSION AND SEDIMENT CONTROL MEASURES (SILT FENCES, ETC.) TO PREVENT EROSION AND POLLUTANT DISCHARGE OFF-SITE.
- ALL SITES SHOWN ON THIS SITE MAP, AND IN THE STORM WATER POLLUTION PREVENTION PLAN, SHALL BE MAINTAINED IN FULLY FUNCTIONAL CONDITION UNTIL NO LONGER REQUIRED FOR A COMPLETED PHASE OF WORK OR FINAL STABILIZATION OF THE SITE. ALL EROSION AND SEDIMENTATION CONTROL MEASURES SHALL BE CHECKED BY QUALIFIED PERSON IN ACCORDANCE WITH THE CONTRACT DOCUMENTS OR THE APPLICABLE PERMIT, WHICHEVER IS MORE STRINGENT, AND REPAIRED IN ACCORDANCE WITH THE SITE PLANS.
- STORM WATER POLLUTANT CONTROL MEASURES INSTALLED DURING CONSTRUCTION, THAT WILL ALSO PROVIDE STORM WATER MANAGEMENT AFTER CONSTRUCTION, ARE INCLUDED IN THE CONTRACT DOCUMENTS. THE SITE-SPECIFIC POST CONSTRUCTION STORM WATER OPERATION AND MAINTENANCE (O&M) MANUAL IS INCLUDED IN THE CONTRACT DOCUMENTS.
- ALL PERMANENT CONTROLS AND SYSTEMS MUST BE INSTALLED AND FUNCTIONING AS DESIGNED AND FREE OF ACCUMULATED SEDIMENT AND DEBRIS DURING FINAL PROJECT INSPECTION AND APPROVAL.
- NO SOLID MATERIALS, INCLUDING BUILDING MATERIALS, SHALL BE DISCHARGED FROM THE SITE.
- OFF-SITE VEHICLE TRACKING OF SEDIMENT AND THE GENERATION OF DUST SHALL BE MINIMIZED DURING CONSTRUCTION.
- THE PLAN SHALL ENSURE AND DEMONSTRATE COMPLIANCE WITH APPLICABLE STATE OR LOCAL WASTE DISPOSAL AND TEMPORARY AND PERMANENT SANITARY SEWER REGULATIONS.
- NO LIQUID CONCRETE WASTE SHALL BE DISCHARGED FROM THE SITE.
- NO CONTAMINATES FROM FUEL STORAGE AREAS, HAZARDOUS WASTE, AND TRUCK WASH AREAS SHALL BE DISCHARGED FROM THE SITE.
- ADEQUATE HOUSEKEEPING MEASURES SHALL BE IMPLEMENTED SO THAT RANDOM TRASH, MATERIALS, AND TOOLS ARE NOT LEFT LAYING AROUND THE SITE DURING CONSTRUCTION.

HAZARDOUS MATERIAL MANAGEMENT & SPILL REPORTING

- ANY HAZARDOUS OR POTENTIALLY HAZARDOUS MATERIAL THAT IS BROUGHT ONTO THE CONSTRUCTION SITE SHALL BE HANDLED PROPERLY TO MINIMIZE THE POTENTIAL FOR STORMWATER POLLUTION. ALL MATERIALS USED ON THIS CONSTRUCTION PROJECT SHALL BE PROPERLY STORED, HANDLED, DISPENSED AND DISPOSED OF FOLLOWING ALL APPLICABLE LABELING INSTRUCTIONS. FLAMMABLE AND COMBUSTIBLE LIQUIDS SHALL BE STORED AND HANDLED ACCORDING TO APPLICABLE REGULATIONS, AND, AT A MINIMUM, ACCORDING TO 29 CFR 1926.152. ONLY APPROVED CONTAINERS AND PORTABLE TANKS SHALL BE USED FOR STORAGE AND HANDLING OF FLAMMABLE AND COMBUSTIBLE LIQUIDS.
- MATERIAL SAFETY DATA SHEETS (MSDS) INFORMATION SHALL BE KEPT ON SITE FOR ANY AND ALL APPLICABLE MATERIALS. HOWEVER, MSDS MAY ALSO BE ACCESSED VIA TELEPHONE OR OTHER ELECTRONIC MEANS OR APPARATUS.
- IN THE EVENT OF AN ACCIDENTAL SPILL, IMMEDIATE ACTION SHALL BE TAKEN BY THE GC TO CONTAIN AND REMOVE THE SPILLED MATERIAL. THE SPILL SHALL BE REPORTED TO THE APPROPRIATE AGENCIES IN THE REQUIRED TIME FRAMES, AS REQUIRED UNDER THE PROVISIONS OF THE CLEAN WATER ACT, ANY SPILL OR DISCHARGE ENTERING WATERS OF THE UNITED STATES SHALL BE PROPERLY REPORTED.
- ALL HAZARDOUS MATERIALS, INCLUDING CONTAMINATED SOIL AND LIQUID CONCRETE WASTE, SHALL BE DISPOSED OF BY THE CONTRACTOR IN THE MANNER SPECIFIED BY FEDERAL, STATE AND LOCAL REGULATIONS AND BY THE MANUFACTURER OF SUCH PRODUCTS.
- THE GC SHALL PREPARE A WRITTEN RECORD OF ANY SPILL AND ASSOCIATED CLEAN-UP ACTIVITIES OF PETROLEUM PRODUCTS OR HAZARDOUS MATERIALS IN EXCESS OF ONE GALLON OR REPORTABLE QUANTITIES, WHICHEVER IS LESS, ON THE DAY OF THE SPILL. THE GC SHALL PROVIDE NOTICE TO OWNER, VIA THE ONLINE CRITICAL INCIDENT REPORT, IMMEDIATELY UPON IDENTIFICATION OF ANY SPILL. SPILL REPORT FORMS ARE AVAILABLE IN THE ONLINE SWPPP REPORTING SYSTEM PROVIDED BY THE OWNER. COPIES OF SPILL CRITICAL INCIDENT REPORTS SHALL BE PRINTED AND MAINTAINED IN THE JOBSITE BINDER.
- ANY SPILLS OF PETROLEUM PRODUCTS OR HAZARDOUS MATERIALS IN EXCESS OF REPORTABLE QUANTITIES AS DEFINED BY EPA OR THE STATE OR LOCAL AGENCY REGULATIONS, SHALL BE IMMEDIATELY REPORTED TO THE EPA NATIONAL RESPONSE CENTER (1-800-424-8802) AND MISSISSIPPI EMERGENCY MANAGEMENT AGENCY (1-800-222-6822) IMMEDIATELY.
- THE STATE REPORTABLE QUANTITY FOR PETROLEUM PRODUCTS IS THAT WHICH EXCEEDS A REPORTABLE QUANTITY ESTABLISHED UNDER 40 CFR 302. ONE BARREL OR 42 GALLONS.
- THE REPORTABLE QUANTITY FOR HAZARDOUS MATERIALS CAN BE FOUND IN 40 CFR 302 OR THE CODE OF FEDERAL REGULATIONS WEBSITE [HTTP://WWW.ACCESS.GPO.GOV/CGIBIN/CFR/ASMS6/CGIBIN/CFR/11711E-200440](http://www.access.gpo.gov/cgibin/cfr/cfrasm56/cgibin/cfr/11711e-200440).
- TO MINIMIZE THE POTENTIAL FOR A SPILL OF PETROLEUM PRODUCT OR HAZARDOUS MATERIALS TO COME IN CONTACT WITH STORMWATER, THE FOLLOWING STEPS SHALL BE IMPLEMENTED:
- ALL MATERIALS WITH HAZARDOUS PROPERTIES, SUCH AS PESTICIDES, PETROLEUM PRODUCTS, FERTILIZERS, SOAPS, DETERGENTS, CONSTRUCTION CHEMICALS, ACIDS, BASES, PAINTS, PAINT SOLVENTS, ADDITIVES FOR SOIL STABILIZATION, CONCRETE, CURING COMPOUNDS AND ADDITIVES, ETC., SHALL BE STORED IN A SECURE LOCATION, UNDER COVER AND IN APPROPRIATE, TIGHTLY SEALED CONTAINERS WHEN NOT IN USE.
 - THE MINIMUM PRACTICAL QUANTITY OF ALL SUCH MATERIALS SHALL BE KEPT ON THE JOB SITE AND SCHEDULED FOR DELIVERY AS CLOSE TO TIME OF USE AS PRACTICAL.
 - A SPILL CONTROL AND CONTAINMENT KIT (CONTAINING FOR EXAMPLE, ABSORBENT MATERIAL SUCH AS KITTY LITTER OR SAND/UST, ACID, BASE, NEUTRALIZING AGENT, BROOMS, DUST PANS, MOPS, RAGS, GLOVES, BOGGIES, PLASTIC AND METAL TRASH CONTAINERS, ETC.) SHALL BE PROVIDED AT THE CONSTRUCTION SITE AND ITS LOCATIONS) SHALL BE IDENTIFIED WITH LEGIBLE SIGNAGE AND SHOWN ON SITE MAPS.
 - THE SPILL CONTROL AND CONTAINMENT KIT SUPPLIES SHALL BE OF SUFFICIENT QUANTITIES AND APPROPRIATE CONTENT TO CONTAIN A SPILL FROM THE LARGEST ANTICIPATED PIECE OF EQUIPMENT AND FROM THE LARGEST ANTICIPATED QUANTITIES OF PRODUCTS STORED ON THE SITE AT ANY GIVEN TIME.
 - CONTENTS SHALL BE INSPECTED DAILY DURING THE DAILY STORMWATER INSPECTION.
 - ALL PRODUCTS SHALL BE STORED IN AND USED FROM THE ORIGINAL CONTAINER WITH THE ORIGINAL PRODUCT LABEL. CONTAINERS MUST BE STORED IN A MANNER TO PROTECT THEM FROM THE ELEMENTS AND INCIDENTAL DAMAGE.
 - ALL PRODUCTS SHALL BE USED IN STRICT COMPLIANCE WITH INSTRUCTIONS ON THE PRODUCT LABEL.
 - THE DISPOSAL OF EXCESS OR USED PRODUCTS SHALL BE IN STRICT COMPLIANCE WITH INSTRUCTIONS ON THE PRODUCT LABEL AND REGULATIONS.



USGS Quad Map

EROSION AND SEDIMENT CONTROL PLANS (E-1)

PROVIDE COPIES OF (E-1) FOR REFERENCE. (E-1) IS USUALLY PART OF BMP'S AND SHALL BE ADDRESSED ON GRADING PLANS AND RELATED BUILDING SITE PLAN.

BENCHMARK INFORMATION:
STORM DRAIN MANHOLE TOP
ELEV. 746.21

FLOOD CERTIFICATION:

THIS PROPERTY IS LOCATED WITHIN FLOOD ZONE "X". FLOOD ZONE "X" IS DEFINED AS AREAS OF 0.2% ANNUAL CHANCE FLOOD; AREAS OF 1% ANNUAL CHANCE FLOOD WITH AVERAGE DEPTHS OF LESS THAN 1 FOOT OR WITH DRAINAGE AREAS LESS THAN 1 SQUARE MILE; AND AREAS PROTECTED BY LEVEES FROM 1% ANNUAL CHANCE FLOOD AS DETERMINED BY THE NATIONAL FLOOD INSURANCE PROGRAM. FLOOD INSURANCE RATE MAP FOR CITY OF ANDERSON, SOUTH CAROLINA. COMMUNITY PANEL NUMBER: 450072024F. EFFECTIVE DATE: DECEMBER 21, 2017.

DEVELOPER/OWNER:
WALMART INC.
702 SW 8TH STREET, MAIL STOP 0505
BENTONVILLE, AR 72716-0505
479-204-3314

SITE OPERATOR/GENERAL CONTRACTOR:

SUPERINTENDENT:

IMPORTANT: GC MUST SIGN ALL PLAN SHEETS AND ANY NEW PLAN SHEETS ISSUED BY THE CEC.

SWPPP NOTES

REVISIONS	
NO.	DESCRIPTION

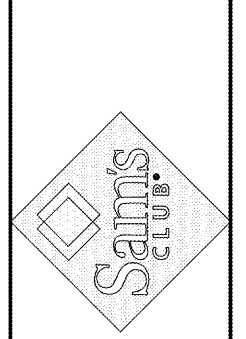
CEI Engineering Associates, Inc.
ENGINEERS • PLANNERS • SURVEYORS
LANDSCAPE ARCHITECTS • ENVIRONMENTAL SCIENTISTS

7445 N. Ingram Ave., Suite 107
Fresno, CA 93711
(559) 447-3139
FAX: (559) 447-3129

SAMS CLUB FUEL STATION #6463-502

SWPPP NOTES

3812 LIBERTY HWY #6
ANDERSON SOUTH CAROLINA



INITIAL DESIGN	11/7/19		
DATE			
JOS	JPD	JAP	DV
DPOR	PM	DES	DRW

JOS NO.: 31076	SHEET NO.
DWG NAME: 31076-SWPPP	SWO
DATE: 11/8/19	
9:00 AM	
REV-0	

JOB # 31076 DRAWING: 31076-SWPPP.dwg LAST SAVED BY: DVYNGE

© 2019 CEI ENGINEERING ASSOCIATES, INC.