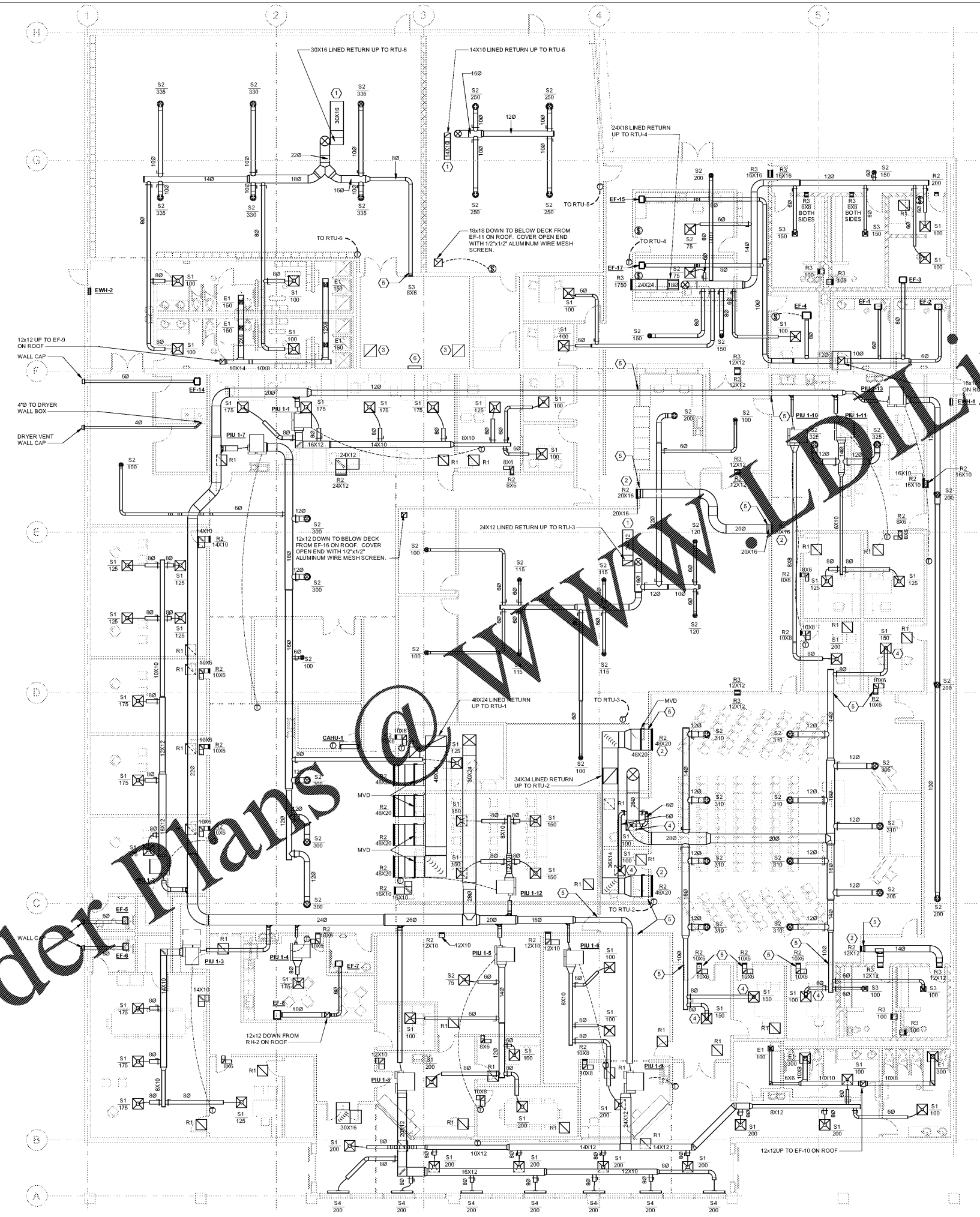


Order Plans



**GENERAL NOTES**

1. ALL DUCTWORK LOCATED IN OPEN CEILING AREAS SHALL BE INTERNALLY INSULATED DOUBLE WALL CONSTRUCTION, FABRICATED FROM A PAINT GRIP MATERIAL. PAINTING IS BY OTHERS AND A COLOR SELECTED BY ARCHITECT.
2. ALL TRANSFER DUCTS SHALL BE LINED WITH 1" ACUSTICAL DUCT LINER.
3. COORDINATE MOUNTING HEIGHT OF ALL ROUND DIFFUSERS WITH THE ARCHITECTURAL REFLECTIVE CEILING PLAN.
4. AT ALL WALL PENETRATIONS OF ROUND DUCTWORK IN AREAS WITHOUT CEILINGS, PROVIDE ANGLE IRON CLOSURE RING.
5. ALL ROUND DUCTWORK IN OPEN CEILING AREAS SHALL BE SUSPENDED FROM STRUCTURE VIA STEEL CABLE. SEE SPECIFICATIONS.

**KEYED NOTES M100**

- ① COVER OPEN END WITH 1/2"x1/2" ALUMINUM WIRE MESH.
- ② PROVIDE SECURITY BARS IN DUCTWORK AT WALL PENETRATIONS.
- ③ CAP EXISTING DUCTWORK BEHIND CEILING.
- ④ CONNECT TO DIFFUSER WITH RIGID GALVANIZED STEEL DUCTWORK.
- ⑤ SEAL BOTH SIDES OF DUCTWORK WALL PENETRATION WITH FIRE CAULK.
- ⑥ BAS CONTROL PANEL MOUNTED ON WALL. CONNECT TO EMERGENCY POWER CIRCUIT. COORDINATE WITH DIVISION ELECTRICAL.

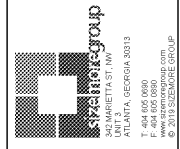
1 MECHANICAL FLOOR PLAN  
M100 1/8" = 1'-0"



**SPENCER BRISTOL ENGINEERING, INC.**  
A Gray Company  
3577 Peachtree Lane, Suite 250  
Peachtree Corners, Georgia 30092  
Tel: 770.414.8028 Fax: 770.414.6024  
SBE Project No. 19036

No.	DESCRIPTION	DATE

**CITY OF MONROE**  
**PUBLIC SAFETY & MUNICIPAL**  
**COURT COMPLEX RENOVATION**  
140 BLAINE ST. MONROE, GA 30655



THIS DRAWING IS AN INSTRUMENT OF SERVICE AND SHALL REMAIN THE PROPERTY OF THE ARCHITECT. NO PART OF THIS DOCUMENT SHALL BE REPRODUCED OR TRANSMITTED IN ANY FORM, ELECTRONICALLY OR MECHANICALLY, FOR ANY PURPOSE, WITHOUT THE EXPRESS WRITTEN PERMISSION OF THE ARCHITECT.

MECHANICAL PLAN

PROJECT # 19160MONRpo  
DATE: Issue Date  
DRAWN BY: KM  
CHECKED BY: AW

**M100**

SCALE 1/8" = 1'-0"

PERMIT SET